

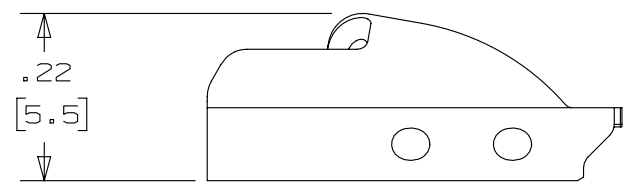
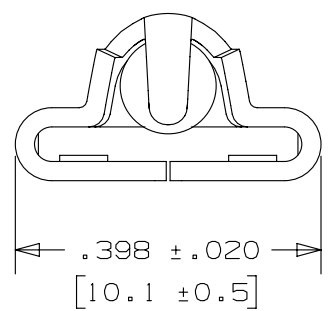
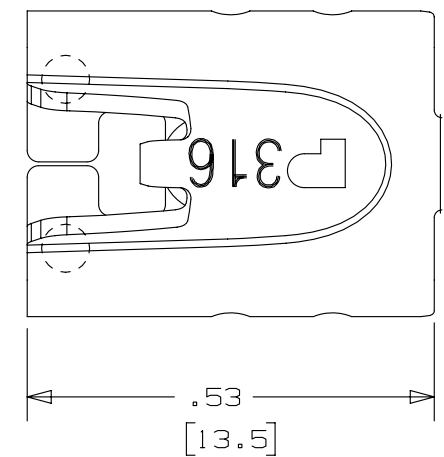
2

1

THIS COPY IS PROVIDED ON A RESTRICTED BASIS AND IS NOT TO BE USED IN ANY WAY DETRIMENTAL TO THE INTERESTS OF PANDUIT CORP.

NOTES:

1. TO BE USED WITH PANDUIT POLYESTER COATED METAL BANDING MBCH-QR316
2. APPLICATION TOOL: GS4MT, ST2MT, PPTMT, ST3MT, OR HTMT
3. TOOL TENSION SETTING: 4 TO 8 (GS4MT AND PPTMT ONLY)
4. DIMENSIONS IN [] ARE MILLIMETERS
5. MINIMUM LOOP TENSILE STRENGTH: 250 LBS (1112 N)
6. TOLERANCES:
 - .X = ±.030 [.762]
 - .XX = ±.020 [.508]
 - .XXX = ±.010 [.254]
 - ANGLES = ±2°



01A	4/13	JAMB	MIM	RGRO	UPDATE DRAWING TO NEW GLOBAL PANDUIT TITLE BLOCK WITH PANDUIT LOGO	SSECN01049
00A	5/05	JAMB	EJD	SKB	DRAWING RELEASED	12675
REV	DATE	BY	CHK	APR	DESCRIPTION	ECN

TITLE						METAL TIE HEAD HEAVY PART NO. MTHCH-C316		
ITEM REVISION NAME						CUSTOMER DRAWING		
DATASET FILE NAME						N41212BS_01		
DATASET FILE NAME						N41212BS_DC/01A		
UNLESS OTHERWISE SPECIFIED, DIMENSIONAL TOLERANCES ARE: IN [mm]						PANDUIT MATERIAL: 316 STAINLESS STEEL		
.x ± .1 [2.54] .xxx ± .005 [.127] .xx ± .01 [.25] ANGLES ± 5 °								
THIRD ANGLE PROJECTION						DRAWING NUMBER: N41212BS_DC		
DRAWN BY	DATE	CHK	SCALE			SHT 1 OF 1		SIZE
JAMB	5/05	EJD	4:1					A

2

1