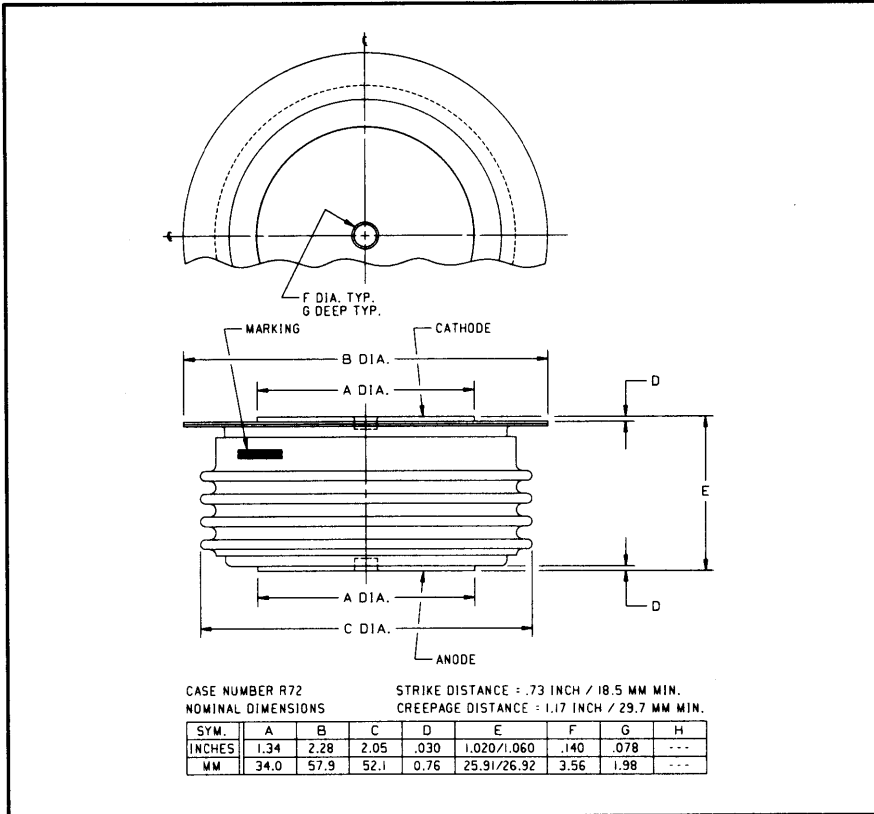
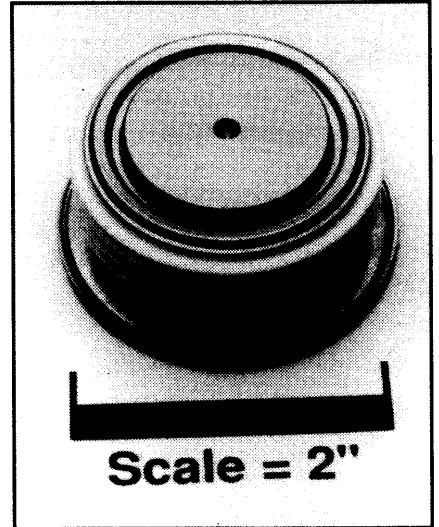


Powerex, Inc., 200 Hillis Street, Youngwood, Pennsylvania 15697-1800 (412) 925-7272  
 Powerex, Europe, S.A. 428 Avenue G. Durand, BP107, 72003 Le Mans, France (43) 41.14.14

**Fast Recovery Rectifier**  
**500 Amperes Average**  
**2600 Volts**



R722\_\_05 (Outline Drawing)



R722\_\_05  
 Fast Recovery Rectifier  
 500 Amperes Average, 2600 Volts

### Ordering Information:

Select the complete part number you desire from the following table:

Type	Voltage		Current		Recovery Time		Leads	
	V <sub>RRM</sub> (Volts)	Code	I <sub>F(av)</sub> (A)	Code	t <sub>rr</sub> (μsec)	Code	Case	Code
R722	400	04	500	05	3.0	CS	R72	OO
	600	06						
	800	08						
	1000	10						
	1200	12						
	1400	14						
	1600	16						
	1800	18						
	2000	20						
	2200	22						
	2600	26						

**Example:** Type R722 rated at 500A average with V<sub>RRM</sub> = 2600V,  
 Recovery Time = 3.0 μsec, order as:

Type	Voltage	Current	Time	Leads
R 7 2 2	2 6	0 5	CS	O O

### Features:

- Fast Recovery Times
- Soft Recovery Characteristics
- High Surge Current Ratings
- Special Selection of t<sub>rr</sub> or Q<sub>rr</sub> Available

### Applications:

- Inverters
- Choppers
- Transmitters
- Free Wheeling Diode



Powerex, Inc., 200 Hillis Street, Youngwood, Pennsylvania 15697-1800 (412) 925-7272  
 Powerex, Europe, S.A. 428 Avenue G. Durand, BP107, 72003 Le Mans, France (43) 41.14.14

R722\_05

Fast Recovery Rectifier

500 Amperes Average, 2600 Volts

### Absolute Maximum Ratings

Characteristics	Symbol	R722_05	Units
RMS Forward Current	$I_{F(rms)}$	785	Amperes
Average Forward Current	$I_{F(av)}$	500	Amperes
One-half Cycle Surge Current	$I_{FSM}$	6500	Amperes
$I^2t$ (for Fusing), Times = 8.3 milliseconds	$I^2t$	176000	$A^2sec$
Max. $I^2t$ Package (for Times = 8.3 milliseconds)	$I^2t$	$80 \times 10^6$	$A^2sec$
Storage Temperature	$T_{stg}$	-40 to +190	$^{\circ}C$
Operating Temperature	$T_j$	-40 to +150	$^{\circ}C$
Mounting Force		2000 to 2400	lbs

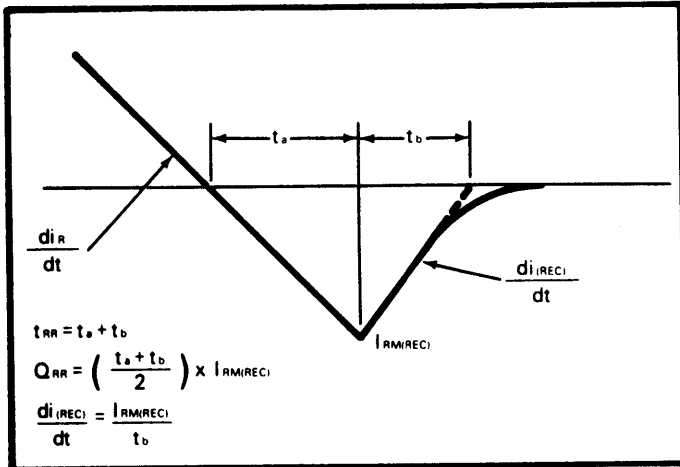
### Electrical and Thermal Characteristics

Characteristics	Symbol	Test Conditions	R722_05	Units
<b>Current - Conducting State Maximums</b>				
Forward Voltage Drop	$V_{FM}$	$T_j = 25^{\circ}C, I_{FM} = 1500A$	2.25	Volts
<b>Voltage - Blocking State Maximums</b>				
Repetitive Peak Reverse Voltage (Rated Limit)	$V_{RRM}$		2600	Volts
Non-rep. Trans. Peak Rev. Voltage (Rated Limit)	$V_{RSM}$	$t \leq 5.0msec$	2800	Volts
Reverse Leakage Current, mA peak	$I_{RRM}$	$T_j$ at max., $V_{RRM} = \text{Rated}$	50	mA
<b>Switching</b>				
Maximum Reverse Recovery Time	$t_{rr}$	$I_{FM} = 1500A, t_p = 190\mu sec,$ $di_R/dt = 25A/\mu sec, T_C = 25^{\circ}C$	3.0	$\mu sec$
<b>Thermal</b>				
Maximum Resistance, Junction to Case	$R_{\theta(j-c)}$		0.055	$^{\circ}C/Watt$
Maximum Resistance, Case to Sink (Lubricated)	$R_{\theta(c-s)}$		0.020	$^{\circ}C/Watt$

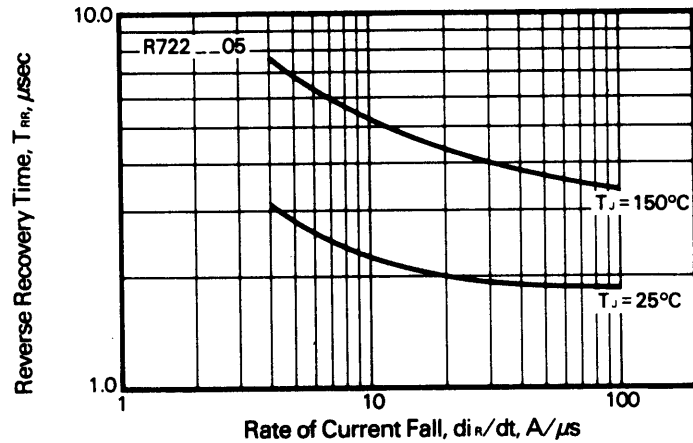
Powerex, Inc., 200 Hillis Street, Youngwood, Pennsylvania 15697-1800 (412) 925-7272  
 Powerex, Europe, S.A. 428 Avenue G. Durand, BP107, 72003 Le Mans, France (43) 41.14.14

**R722\_05**  
**Fast Recovery Rectifier**  
 500 Amperes Average, 2600 Volts

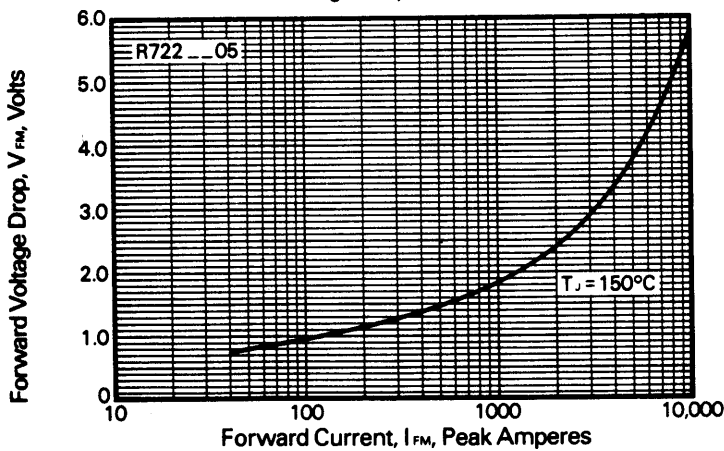
Reverse Recovery Wave Form



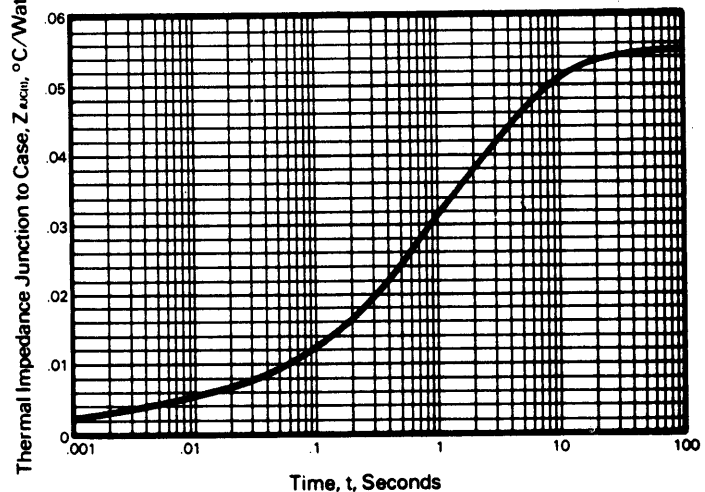
Typical Reverse Recovery Time vs. Rate of Current Fall



Forward Voltage Drop vs. Forward Current

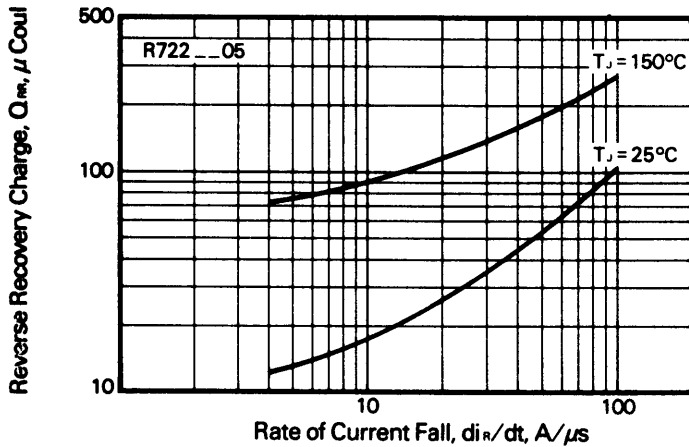


Transient Thermal Impedance Vs. Time

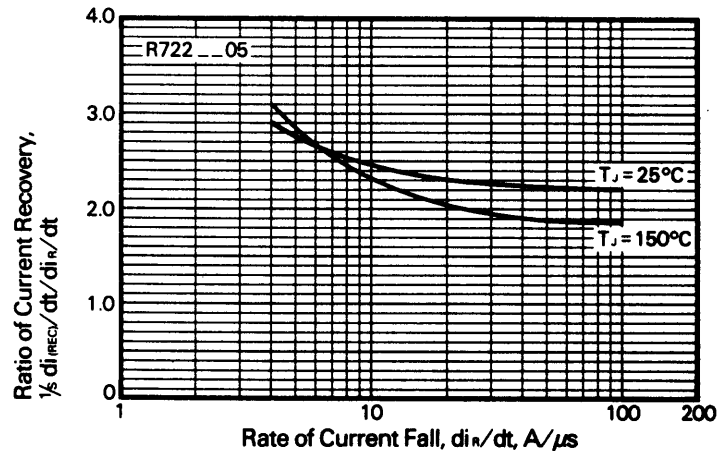


R722\_\_05  
**Fast Recovery Rectifier**  
 500 Amperes Average, 2600 Volts

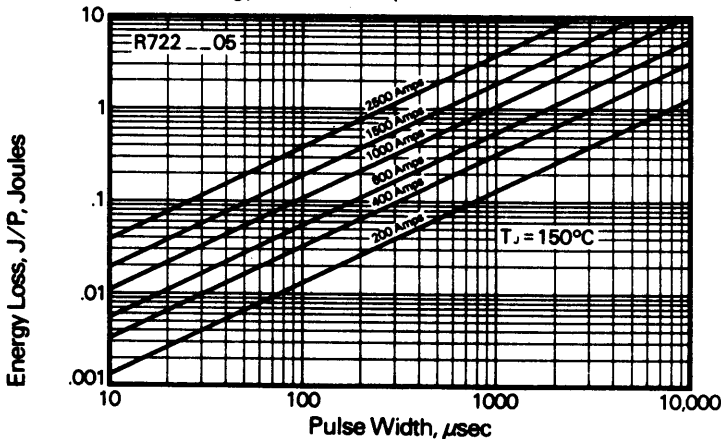
Typical Reverse Recovery Charge vs. Rate of Current Fall



Typical Ratio of Current Recovery to Rate of Current Fall



Energy Loss Per Pulse for Sinusoidal Pulses



### Calculation of Fast Recovery Diodes and Allowable Case Temperature

1. Conduction Losses

$$P_{av(Cond)} = J/P \times F$$

2. Reverse Recovery Losses (Approximate)

$$P_{av(sw)} = 1/4 \times V_R \times \frac{di_R}{dt} \times T_{rr}^2 \times \left( \frac{1/s}{1 + 1/s} \right)^2 \times F \times 1 \times 10^{-6}$$

3. Maximum Allowable Case Temperature

$$T_{C(max)} = T_j - (P_{av(Cond)} + P_{av(sw)} \times R_{\theta(j-c)})$$

Where:

P<sub>av(Cond)</sub> = Forward Conduction Power Loss in Watts

P<sub>av(sw)</sub> = Reverse Recovery Power Loss in Watts

J/P = Energy Loss per Pulse in Joules

F = Frequency in Hertz

V<sub>R</sub> = Steady State Reverse Operating Voltage in Volts

di<sub>R</sub>/dt = Rate of Decay of Forward Current in Amperes/μsec

T<sub>rr</sub> = Reverse Recovery Time in Microseconds

$\frac{1}{S}$  = Ratio of Recovery di/dt  $\left( \frac{di_F/dt}{di_R/dt} \right)$

F = Operating Frequency in Hertz

T<sub>C(max)</sub> = Maximum Allowable Case Temperature in °C.

T<sub>j</sub> = Maximum Operating Junction Temperature in °C.

R<sub>θ(j-c)</sub> = DC Junction to Case Thermal Impedance in °C/Watt.