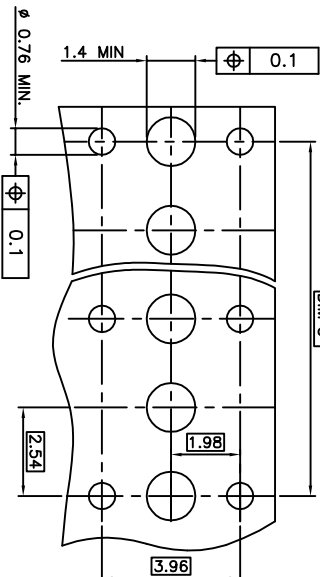


RECOMMENDED HOLES PATTERN

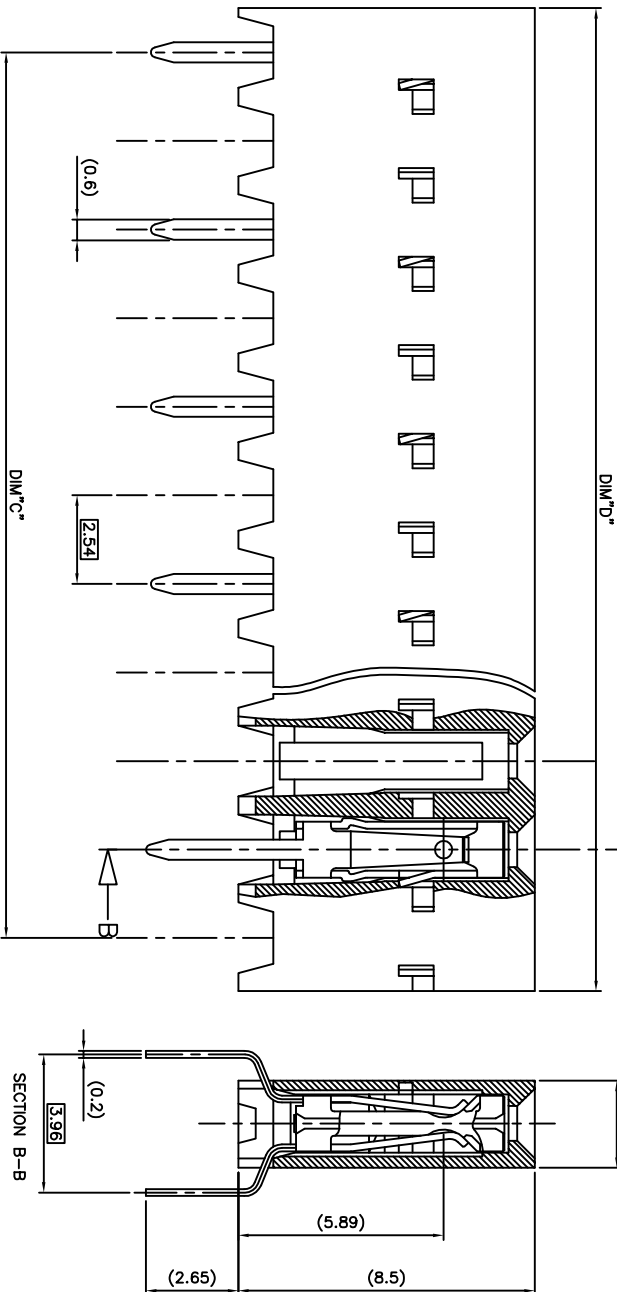
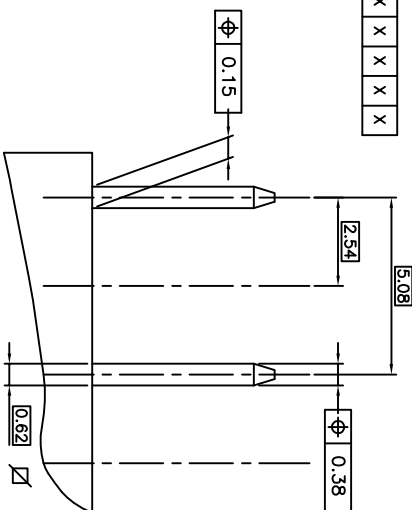
RECOMMENDED PC BOARD THICKNESS: 1.6 mm



PRODUCT N°	HOUSING	DIM"C"	DIM"D"	CONTACT PLACED IN CAVITY (TABLE ACCORDING VIEW A)																											
				NB. OF TER.																											
95234-Y01LF	1 X 28 pos.	68.58	71.04	1	2	3	4	5	6	7	8	9	10	11	12	13	14	15	16	17	18	19	20	21	22	23	24	25	26	27	28
95234-Y02LF	1 X 13 pos.	30.48	32.94	X	X	X	X	X	X	X	X	X	X	X	X	X	X	X	X	X	X	X	X	X	X	X	X	X	X	X	X
95234-Y03LF	1 X 3 pos.	5.08	7.54	X	X	X	X	X	X	X	X	X	X	X	X	X	X	X	X	X	X	X	X	X	X	X	X	X	X	X	X
95234-Y04LF	1 X 7 pos.	15.24	17.70	X	X	X	X	X	X	X	X	X	X	X	X	X	X	X	X	X	X	X	X	X	X	X	X	X	X	X	X
95234-Y05LF	1 X 4 pos.	7.62	10.08	X	X	X	X	X	X	X	X	X	X	X	X	X	X	X	X	X	X	X	X	X	X	X	X	X	X	X	X
95234-Y06LF	1 X 14 pos.	33.02	35.48	X	X	X	X	X	X	X	X	X	X	X	X	X	X	X	X	X	X	X	X	X	X	X	X	X	X	X	X

ROHS COMPATIBLE,
SEE NOTE 4

RECOMMENDED PINS PATTERN



- NOTES:
- 1 - MATERIAL HOUSING: THERMOPLASTIC POLYESTER 70% GULON FILLER, 30% BUTYL ACRYLATE, 10% FLAME RETARDANT PER UL-94 CATEGORY V0.
 - 2 - MATERIAL TERMINAL: PHOSPHOR BRONZE EXTRA HARD.
 - 3 - CONNECTOR TO BE USED ON PC BOARD WITH NON PLATED THROUGH HOLES
 - 4 - ROHS COMPATIBLE PRODUCT SPECIFICATIONS
- a - PLATING:
- "LF" MEANS THE PRODUCT IS LEAD-FREE, 2µm MINIMUM MATTE TIN OVER 1.27µm MINIMUM NICKEL UNDERPLATE.
- b - MANUFACTURING PROCESS COMPATIBILITY
- THE HOUSING WILL WITHSTAND EXPOSURE TO 260°C ±5°C SOLDER BATH TEMPERATURE FOR 5 SECONDS IN A WAVE SOLDER APPLICATION WITH A 1.6mm MIN THICK CIRCUIT BOARD.
- c - LABELING:
- MEETS PACKAGING SPECS AS PER GS-14-920
- d - LEGAL STATEMENT: SEE GS-47-0004

95234-4XXLF	5 µm Sn	Sn
95234-3XXLF	0.76 µm GOLD	Sn
PLATING CODE	CONTACT AREA	SOLDER TAIL
	PLATING THICKNESS OVER 1.27µm NI	

mod'l. code	surface	tolerance	projection	product family
SEE NOTES	ISO 1992	ISO 406 ISO 30.3	10 ^{-0.1}	DX VCC SR
LT# ECD no or date	reference unless otherwise specified	angles	linear	FILE
H F07-027(LMU) 071206		±0.3		DUAL ENTRY S.L
J B-16001(LMU) 131004				OFF SET LEGS
K B-16504(LMU) 140908	±Z			
L B-19123(LMU) 141021	DR	DLEGRAND 951117	scale 10:1	
M P-NZZI 951117	DR	DLEGRAND 951117		day no
F T04-034(DLE) 041115	DR	DLEGRAND 951117		95234
G F06-020(DLE) 060628	DR	PNZ		sheet 1 of 1 size
index	revision			A2
sheet				CUSTOMER Drawing