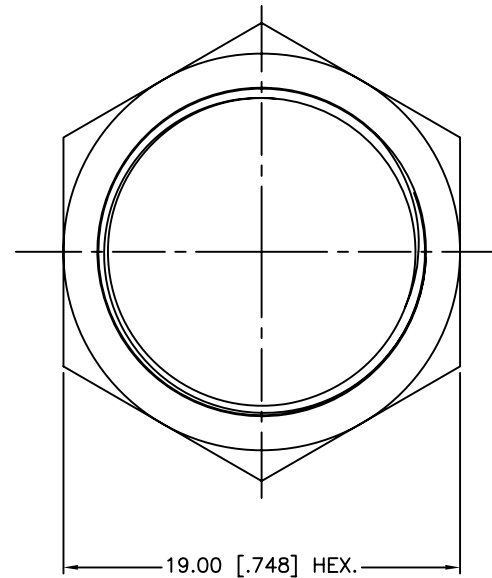
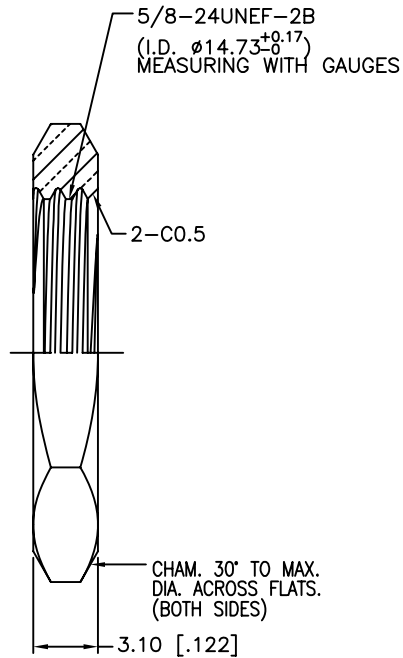


REV.	DATE	ECR NO.	DESCRIPTION
NC	01/14/10	XXXXXX	INITIAL RELEASE



UNLESS OTHERWISE SPECIFIED DIMENSIONS ARE IN MILLIMETERS. DIMENSIONS IN [] ARE IN INCHES AND FOR CUSTOMER REFERENCE ONLY.

UNLESS OTHERWISE SPECIFIED TOLERANCES FOR MILLIMETERS ARE:
0.5 - 8mm ± 0.20mm
8 - 30mm ± 0.40mm
30 - 120mm ± 0.50mm

UNLESS OTHERWISE SPECIFIED TOLERANCES FOR INCHES ARE:
.020 - .315 = ± 0.007"
.315 - 1.180 = ± 0.015"
1.180 - 4.724 = ± 0.020"

APPROVALS		DATE
DRAWN	M.ZHANG	01/14/10
CHECKED		
ISSUED		
SHEET	1 OF 1	
CAD FILE		C:/CONNEX/172-Hexnut.DWG

Amphenol Connex

PART DESCRIPTION			
HEX NUT - HN19-5/8-24X31			
PART NO.			
172-Hexnut			
DWG. NO.	172-Hexnut.DWG	REV.	NC
SIZE	A	SCALE	NA

1	HEX NUT	BRASS	NEXCOTE	1
DESCRIPTION	MATERIAL	FINISH	QTY	

DO NOT SCALE DRAWING