

**DESIGNED AND DIMENSIONED IN MILLIMETERS[INCHES]
ALL DIMENSIONS REFERENCE EXCEPT AS SHOWN**

DO NOT
SCALE FROM
THIS PRINT

**Pb THIS PRODUCT MANUFACTURED
WITH LEAD-FREE PROCESSING**

RF180-XXXX-XXXXXX-XXXX

CABLE CALLOUT
180: CCA-180-MPTFE

OVERALL ASSEMBLY LENGTH (OAL)
XXXX (MILLIMETERS)
(0152 MIN)

END 1 CONNECTOR
(SEE TABLE 2, SHT 2)

END 2 CONNECTOR
(SEE TABLE 2, SHT 2)

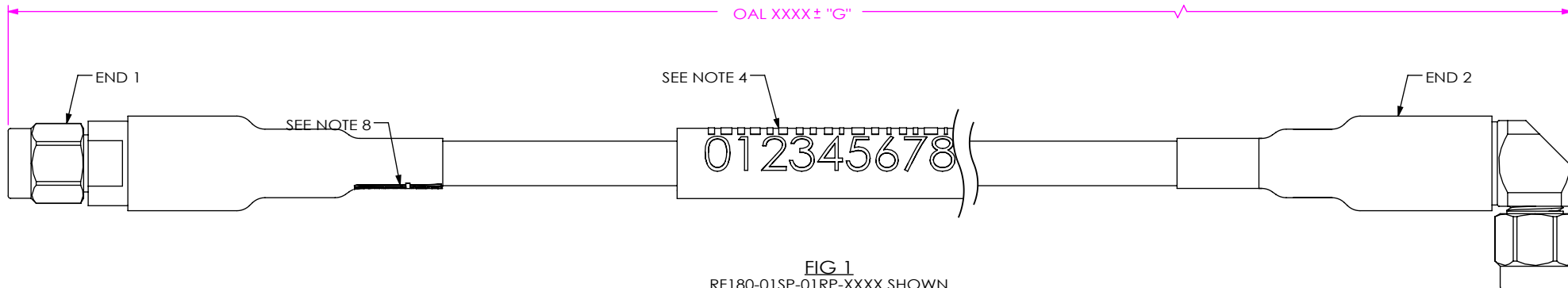


FIG 1
RF180-01SP-01RP-XXXX SHOWN
(PROTECTIVE CAPS NOT SHOWN FOR CLARITY)

OVERALL LENGTH	"G"
0100-0300 [3.93-11.81]	+5.0 [.20] / -0.0 [.00]
0301-1500 [11.85-59.01]	+12.0 [.47] / -0.0 [.00]
1501-3000 [59.09-118.11]	+25.0 [.98] / -0.0 [.00]
3001-7500 [118.15-295.28]	+50.0 [1.97] / -0.0 [.00]
7501-9999 [295.31-393.67]	+1% / -0.0 [.00]

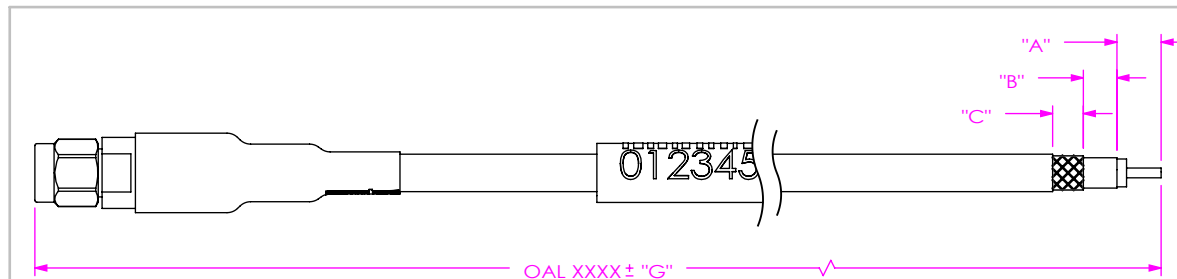


FIG 2
RF180-01SP-203038-XXXX SHOWN (SEE NOTE 6 & 7)

"C" FORMAT: X.X
"B" FORMAT: X.X
"A" FORMAT: X.X

DO NOT LEAVE ANY SPACE BLANK,
EACH MUST CONTAIN A
NUMERIC CHARACTER 0 THRU 9

NOTES:

- CONNECTORS TO BE ORIENTED ACCORDING TO CO-RF-WI-3048-M.
- AFTER FINAL ELECTRICAL TEST, LABEL EACH CABLE ASSEMBLY WITH 1 LABEL-ET.
- CABLE ASSEMBLY TO HAVE PROTECTIVE CAP ASSEMBLED ON EACH END AND TO BE INDIVIDUALLY PACKAGED IN ESD BAG.
- ASSEMBLY TO BE 100% TESTED FOR RETURN LOSS AND INSERTION LOSS. LABEL EACH INDIVIDUAL CABLE ASSEMBLY WITH 1 LABEL-SER-02. RETURN LOSS SPECIFICATION IS EQUAL TO THE HIGHEST END OPTION LIMIT (SEE TABLE 3).
- TRIM DIELECTRIC AS NEEDED TO MEET FLUSH SPEC.
- DIM "A", "B", AND "C" HAVE A MINIMUM VALUE OF 0.0mm & A MAXIMUM VALUE OF 9.9mm[.39"].
- FOR STRIPPED AND TINNED OPTION, BOTH THE CENTER CONDUCTOR & SHIELD ARE TINNED.
- SAMTEC LOGO EXISTS AT END1 ONLY.

PROPRIETARY NOTE
THIS DOCUMENT CONTAINS CONFIDENTIAL AND PROPRIETARY INFORMATION AND ALL DESIGN, MANUFACTURING, REPRODUCTION, USE, PATENT RIGHTS AND SALES RIGHTS ARE EXPRESSLY RESERVED BY SAMTEC, INC. THIS DOCUMENT SHALL NOT BE DISCLOSED, IN WHOLE OR PART, TO ANY UNAUTHORIZED PERSON OR ENTITY NOR REPRODUCED, TRANSFERRED OR INCORPORATED IN ANY OTHER PROJECT IN ANY MANNER WITHOUT THE EXPRESS WRITTEN CONSENT OF SAMTEC, INC.

DO NOT SCALE DRAWING
SHEET SCALE: 3:2
MATERIAL:
CENTER CONTACT: BeCu
OUTER CONTACT: STAINLESS STEEL
INSULATORS: PTFE



520 PARK EAST BLVD, NEW ALBANY, IN 47150
PHONE: 812-944-6733 FAX: 812-948-5047
e-Mail: info@SAMTEC.com code 5332

DESCRIPTION: RF180 CABLE ASSEMBLY
DWG. NO. RF180-XXXX-XXXXXX-XXXX
BY: HENSON T 10/13/2020 SHEET 1 OF 7

TABLE 2

END OPTION	SERIES	GENDER	FINISH		CONNECTOR KIT P/N (PCI P/N)	FIGURE
			CENTER CONTACT	OUTER CONTACT		
-01SP	SMA	PLUG	50µ" GOLD	PASSIVATED	PRF01-P-C-EP-142-SS (3163)	SHT 3, FIG 3
-01SJ	SMA	JACK	50µ" GOLD	PASSIVATED	PRF01-J-C-EP-142-SS (3294)	SHT 3, FIG 4
-01BJ	SMA	JACK	50µ" GOLD	PASSIVATED	PRF01-J-C-EP-142-BS (3297)	SHT 4, FIG 5
-01RP	SMA	PLUG	50µ" GOLD	PASSIVATED	PRF01-P-C-EP-142-RS (3283)	SHT 4, FIG 6
-04SP	TNCA	PLUG	50µ" GOLD	PASSIVATED	PRF04-P-C-EP-142-SS (3246)	SHT 5, FIG 7
-04RP	TNCA	PLUG	50µ" GOLD	PASSIVATED	PRF04-P-C-EP-142-RS (3369)	SHT 5, FIG 8
-04BJ	TNCA	JACK	50µ" GOLD	PASSIVATED	PRF04-J-C-EP-142-BS (3281)	SHT 6, FIG 9
-06SP	NTPE	PLUG	50µ" GOLD	PASSIVATED	PRF06-P-C-EP-142-SS (3177)	SHT 6, FIG 10
-06RP	NTPE	PLUG	50µ" GOLD	PASSIVATED	PRF06-P-C-EP-142-RS (3375)	SHT 7, FIG 11
-06BJ	NTPE	JACK	50µ" GOLD	PASSIVATED	PRF06-J-C-EP-142-BS (3282)	SHT 7, FIG 12
**SING	SINGLE ENDED	-	-	-	-	-
**XXXXXX	STRIPPED & TINNED	-	-	-	-	SHT 1, FIG 2

**= END 2 OPTION ONLY

TABLE 3

END OPTION	MAXIMUM VSWR	MAXIMUM RETURN LOSS	MAXIMUM INSERTION LOSS (IL)	FREQUENCY	PROTECTIVE CAP COLOR
-01SP	1.35:1	-16.54 dB	0.19	DC TO 18 GHz	BROWN
-01SJ	1.35:1	-16.54 dB	0.19	DC TO 18 GHz	BROWN
-01BJ	1.35:1	-16.54 dB	0.19	DC TO 18 GHz	BROWN
-01RP	1.45:1	-14.72 dB	0.26	DC TO 18 GHz	BROWN
-04SP	1.35:1	-16.54 dB	0.19	DC TO 18 GHz	RED
-04RP	1.45:1	-14.72 dB	0.26	DC TO 18 GHz	RED
-04BJ	1.35:1	-16.54 dB	0.19	DC TO 18 GHz	RED
-06SP	1.35:1	-16.54 dB	0.19	DC TO 18 GHz	BLACK
-06RP	1.45:1	-14.72 dB	0.26	DC TO 18 GHz	BLACK
-06BJ	1.35:1	-16.54 dB	0.19	DC TO 18 GHz	BLACK

IL Max [dB] for Cable Assembly :

$$= \{8.036 * \text{SQRT}(\text{Freq}[\text{GHz}]) + 0.196 * \text{Freq}[\text{GHz}]\} * \text{OAL}[\text{mm}] / 30480 + \text{End Option IL\#1(See Table 3)} + \text{End Option IL\#2(See Table 3)}$$

PROPRIETARY NOTE

THIS DOCUMENT CONTAINS CONFIDENTIAL AND PROPRIETARY INFORMATION AND ALL DESIGN, MANUFACTURING, REPRODUCTION, USE, PATENT RIGHTS AND SALES RIGHTS ARE EXPRESSLY RESERVED BY SAMTEC, INC. THIS DOCUMENT SHALL NOT BE DISCLOSED, IN WHOLE OR PART, TO ANY UNAUTHORIZED PERSON OR ENTITY NOR REPRODUCED, TRANSFERRED OR INCORPORATED IN ANY OTHER PROJECT IN ANY MANNER WITHOUT THE EXPRESS WRITTEN CONSENT OF SAMTEC, INC.



520 PARK EAST BLVD, NEW ALBANY, IN 47150
PHONE: 812-944-6733 FAX: 812-948-5047
e-Mail: info@SAMTEC.com code 55322

SHEET SCALE: 2:1

DO NOT SCALE DRAWING

DESCRIPTION:
RF180 CABLE ASSEMBLY

DWG. NO.
RF180-XXXX-XXXXXX-XXXX

BY: HENSON T 10/13/2020 SHEET 2 OF 7

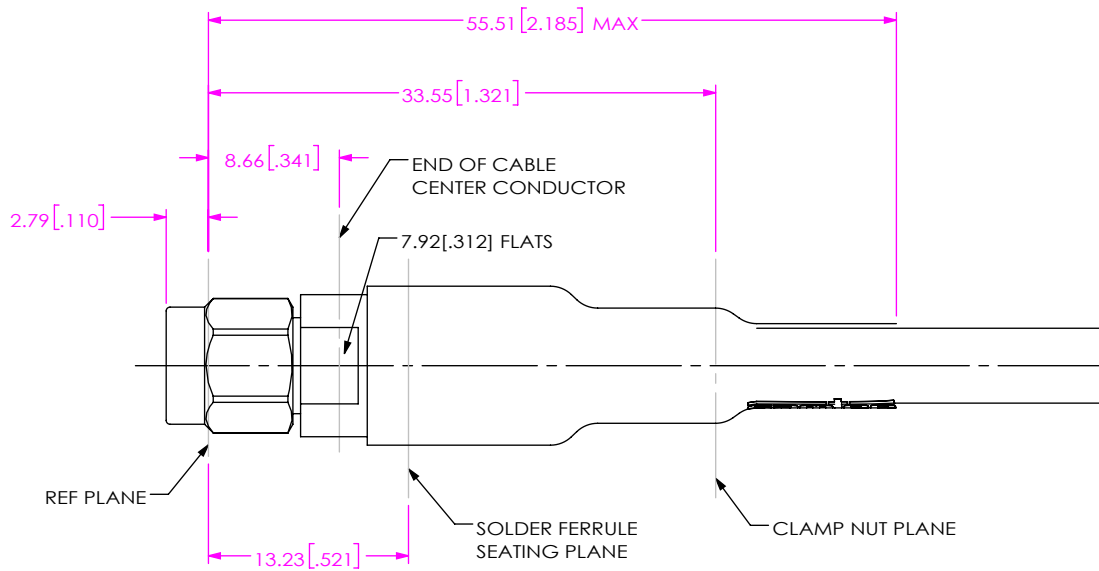


FIG 3
-01SP SHOWN
(PROTECTIVE CAP NOT SHOWN FOR CLARITY)

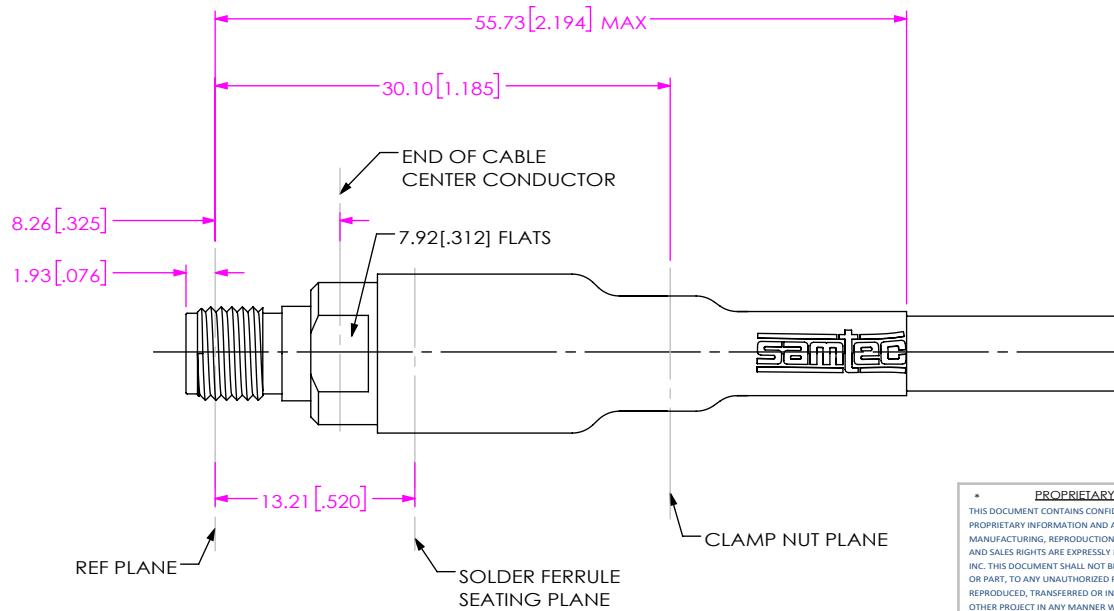


FIG 4
-01SJ SHOWN
(PROTECTIVE CAP NOT SHOWN FOR CLARITY)

PROPRIETARY NOTE
 THIS DOCUMENT CONTAINS CONFIDENTIAL AND PROPRIETARY INFORMATION AND ALL DESIGN, MANUFACTURING, REPRODUCTION, USE, PATENT RIGHTS AND SALES RIGHTS ARE EXPRESSLY RESERVED BY SAMTEC, INC. THIS DOCUMENT SHALL NOT BE DISCLOSED, IN WHOLE OR PART, TO ANY UNAUTHORIZED PERSON OR ENTITY NOR REPRODUCED, TRANSFERRED OR INCORPORATED IN ANY OTHER PROJECT IN ANY MANNER WITHOUT THE EXPRESS WRITTEN CONSENT OF SAMTEC, INC.



520 PARK EAST BLVD, NEW ALBANY, IN 47150
 PHONE: 812-944-6733 FAX: 812-948-5047
 e-Mail: info@SAMTEC.com code 55322

SHEET SCALE: 2:1
 DO NOT SCALE DRAWING

DESCRIPTION:	RF180 CABLE ASSEMBLY
DWG. NO.	RF180-XXXX-XXXXXX-XXXX
BY: HENSON T	10/13/2020 SHEET 3 OF 7

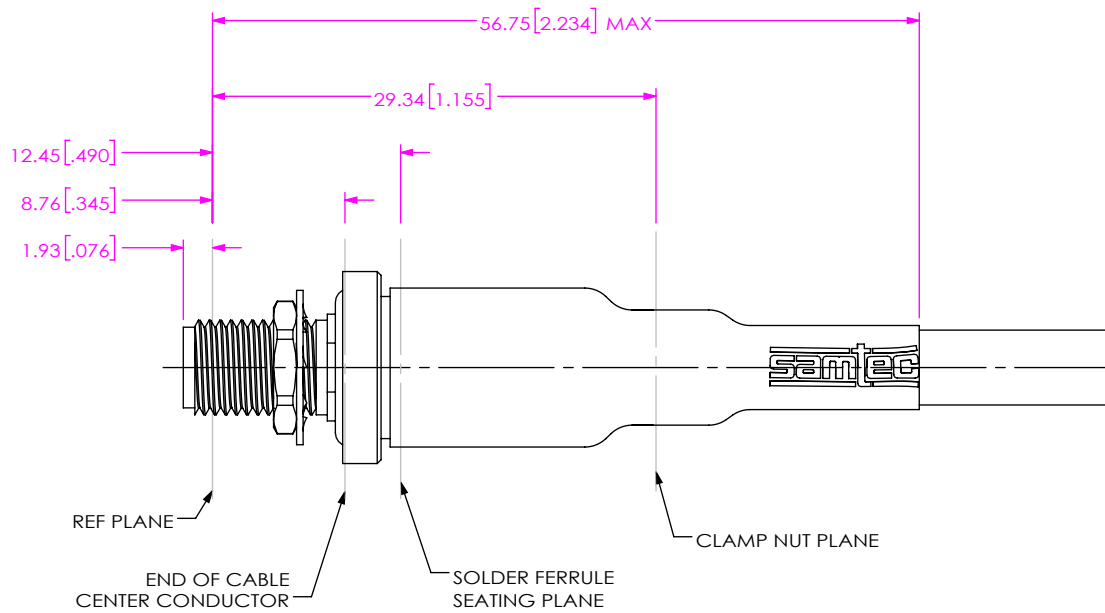


FIG 5
-01BJ SHOWN
(PROTECTIVE CAP NOT SHOWN FOR CLARITY)

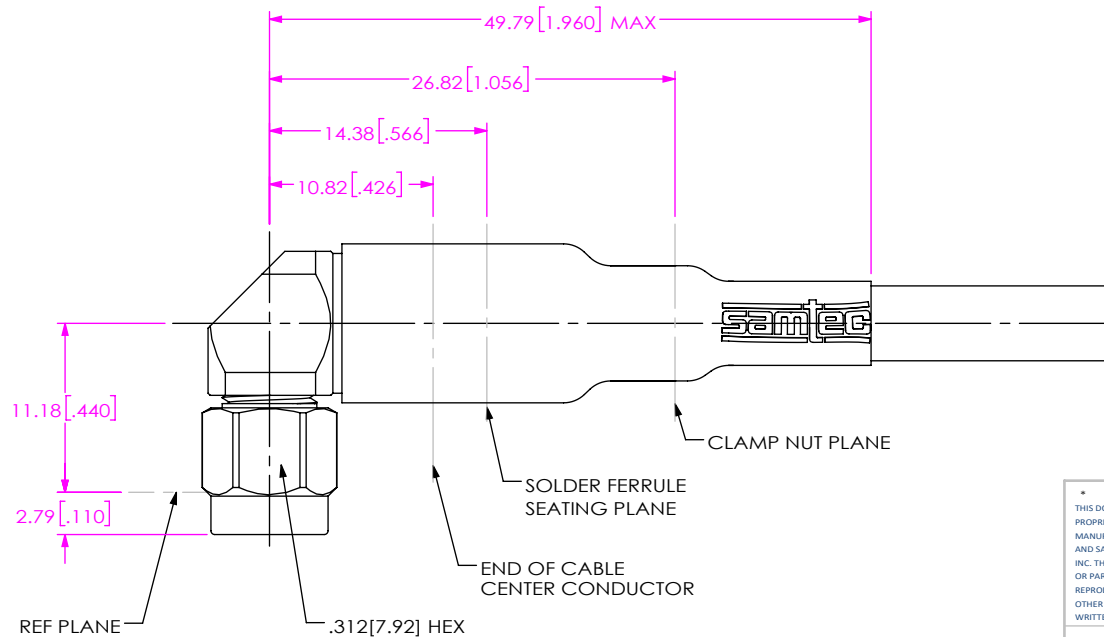


FIG 6
-01RP SHOWN
(PROTECTIVE CAP NOT SHOWN FOR CLARITY)

PROPRIETARY NOTE
 THIS DOCUMENT CONTAINS CONFIDENTIAL AND PROPRIETARY INFORMATION AND ALL DESIGN, MANUFACTURING, REPRODUCTION, USE, PATENT RIGHTS AND SALES RIGHTS ARE EXPRESSLY RESERVED BY SAMTEC, INC. THIS DOCUMENT SHALL NOT BE DISCLOSED, IN WHOLE OR PART, TO ANY UNAUTHORIZED PERSON OR ENTITY NOR REPRODUCED, TRANSFERRED OR INCORPORATED IN ANY OTHER PROJECT IN ANY MANNER WITHOUT THE EXPRESS WRITTEN CONSENT OF SAMTEC, INC.

SHEET SCALE: 2:1
 DO NOT SCALE DRAWING



520 PARK EAST BLVD, NEW ALBANY, IN 47150
 PHONE: 812-944-6733 FAX: 812-948-5047
 e-Mail info@SAMTEC.com code 55322

DESCRIPTION:	RF180 CABLE ASSEMBLY
DWG. NO.	RF180-XXXX-XXXXXX-XXXX
BY: HENSON T	10/13/2020 SHEET 4 OF 7

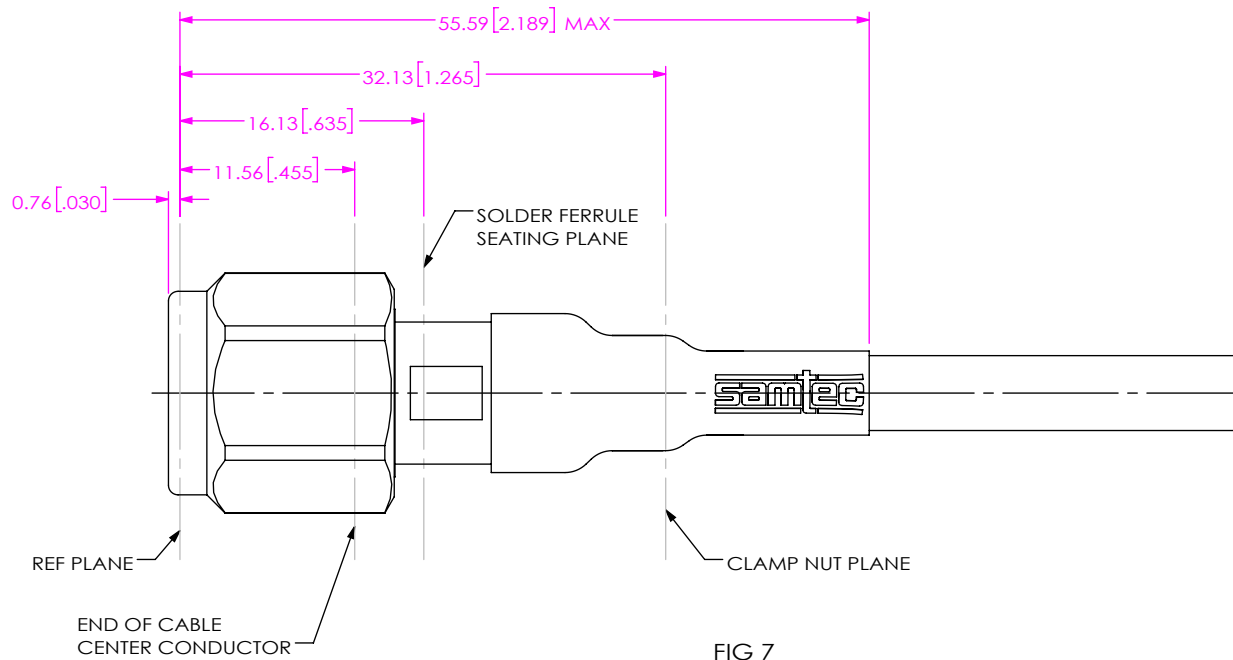


FIG 7
-04SP SHOWN
(PROTECTIVE CAP NOT SHOWN FOR CLARITY)

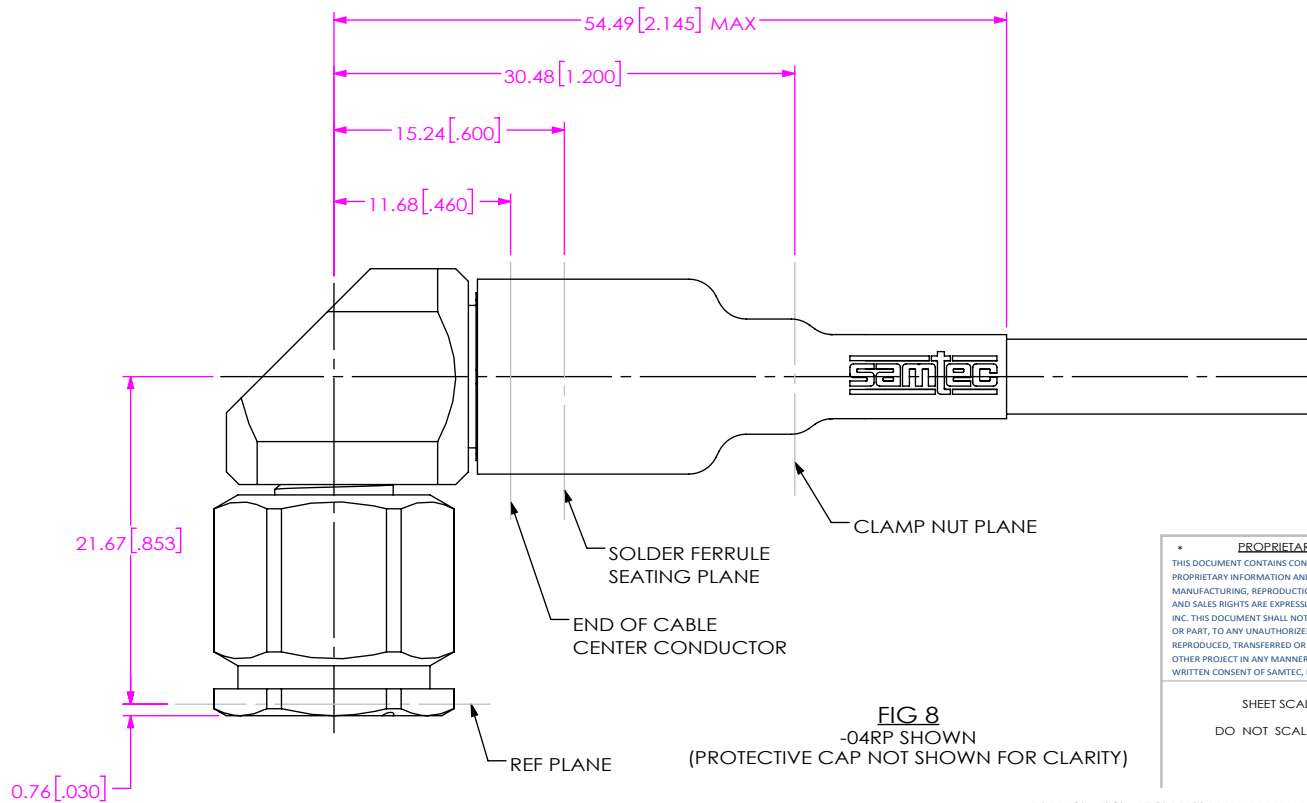


FIG 8
-04RP SHOWN
(PROTECTIVE CAP NOT SHOWN FOR CLARITY)

PROPRIETARY NOTE
 THIS DOCUMENT CONTAINS CONFIDENTIAL AND PROPRIETARY INFORMATION AND ALL DESIGN, MANUFACTURING, REPRODUCTION, USE, PATENT RIGHTS AND SALES RIGHTS ARE EXPRESSLY RESERVED BY SAMTEC, INC. THIS DOCUMENT SHALL NOT BE DISCLOSED, IN WHOLE OR PART, TO ANY UNAUTHORIZED PERSON OR ENTITY NOR REPRODUCED, TRANSFERRED OR INCORPORATED IN ANY OTHER PROJECT IN ANY MANNER WITHOUT THE EXPRESS WRITTEN CONSENT OF SAMTEC, INC.

SHEET SCALE: 2:1
 DO NOT SCALE DRAWING



520 PARK EAST BLVD, NEW ALBANY, IN 47150
 PHONE: 812-944-6733 FAX: 812-948-5047
 e-Mail: info@SAMTEC.com code 55322

DESCRIPTION:	RF180 CABLE ASSEMBLY
DWG. NO.	RF180-XXXX-XXXXXX-XXXX
BY: HENSON T	10/13/2020 SHEET 5 OF 7

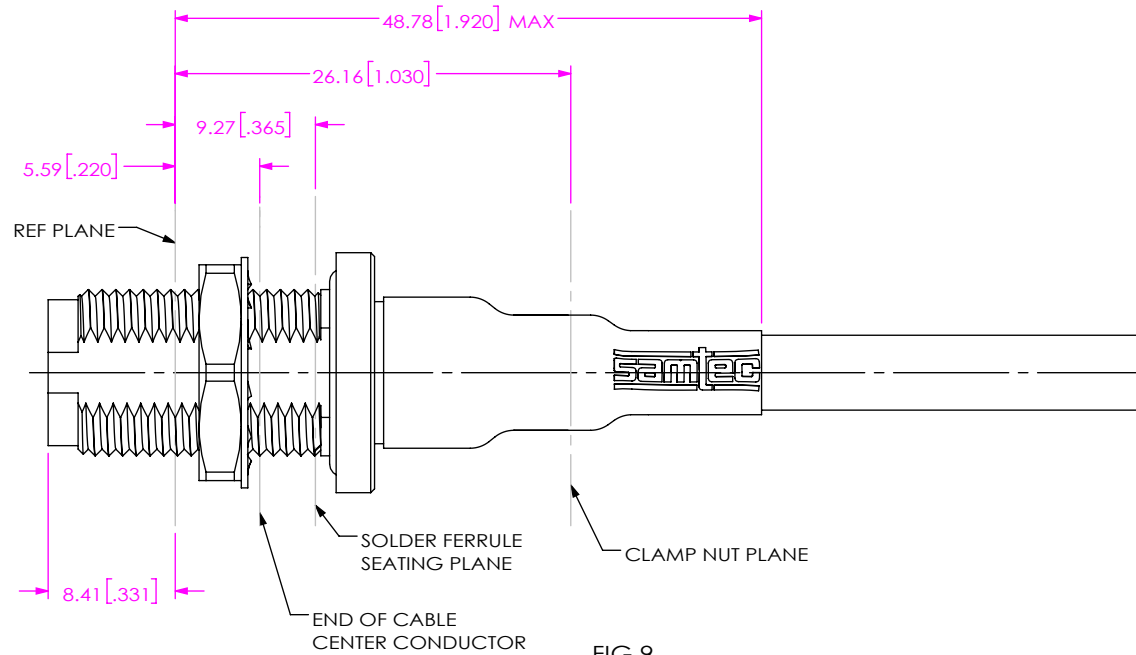


FIG 9
-04BJ SHOWN
(PROTECTIVE CAP NOT SHOWN FOR CLARITY)

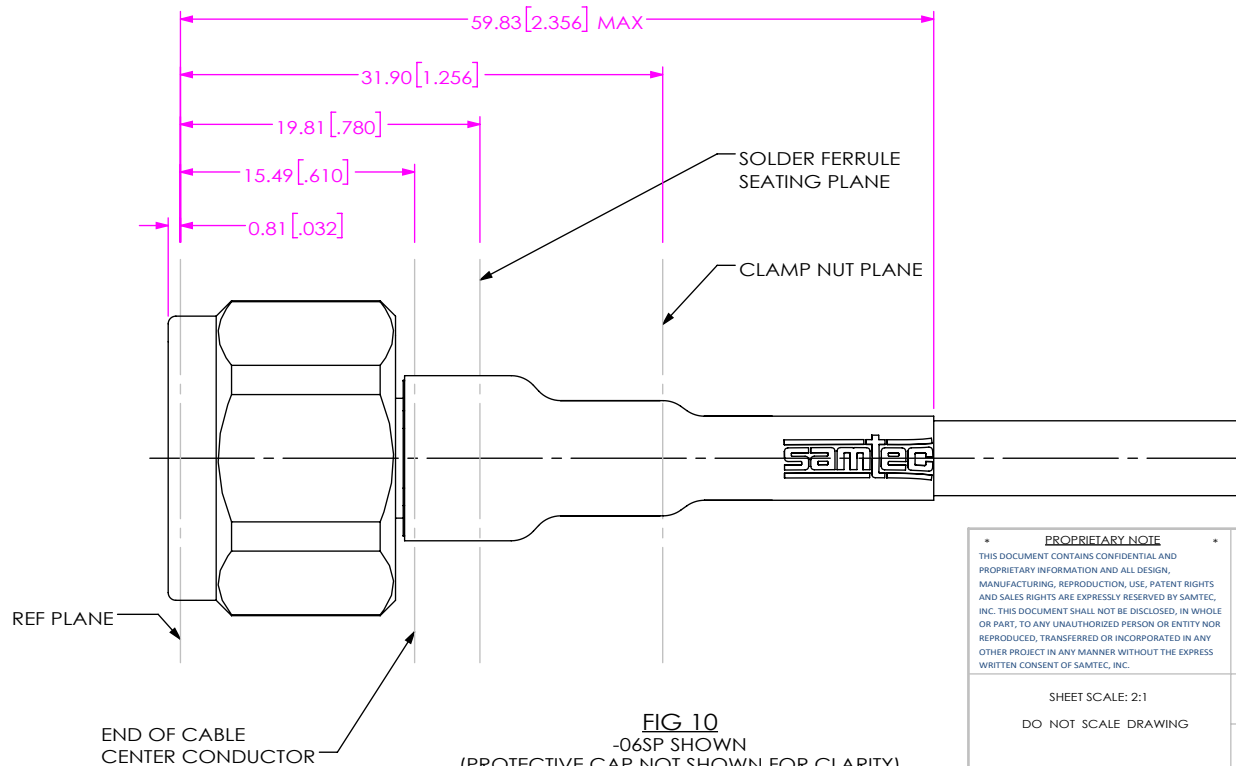


FIG 10
-06SP SHOWN
(PROTECTIVE CAP NOT SHOWN FOR CLARITY)

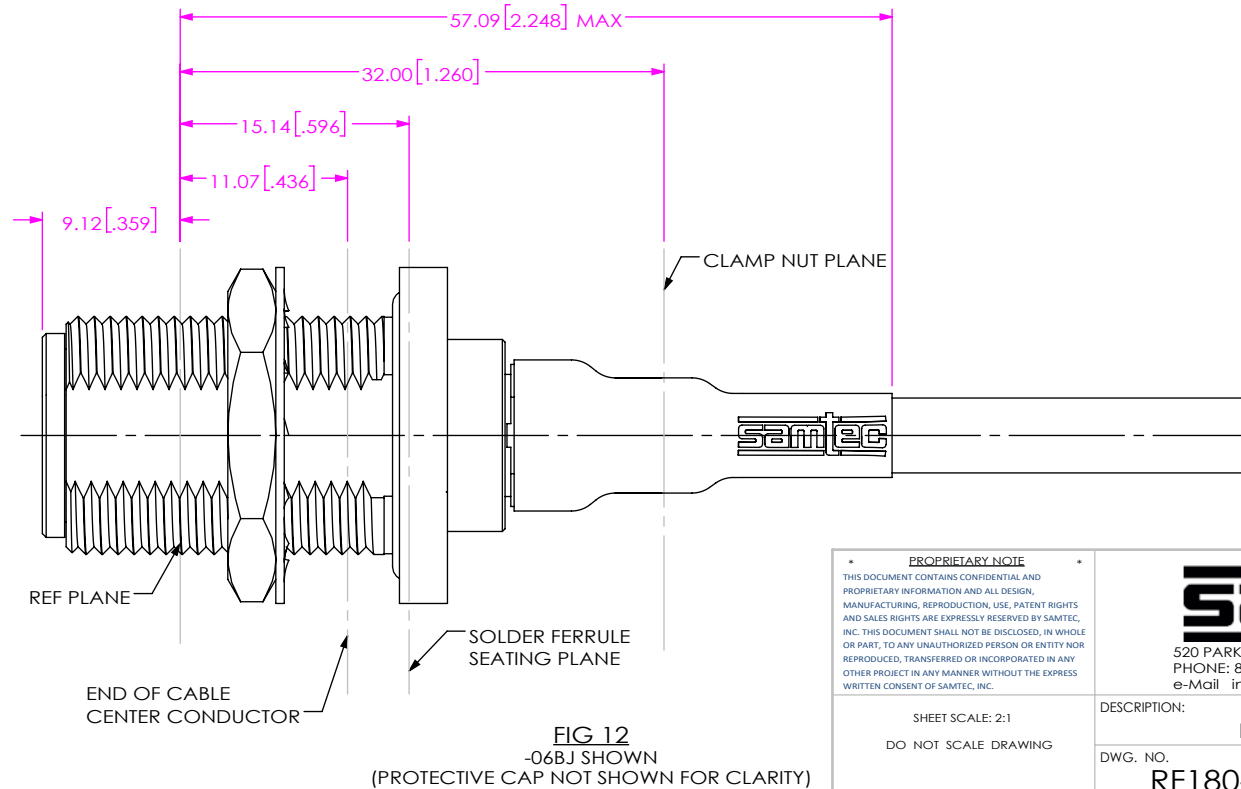
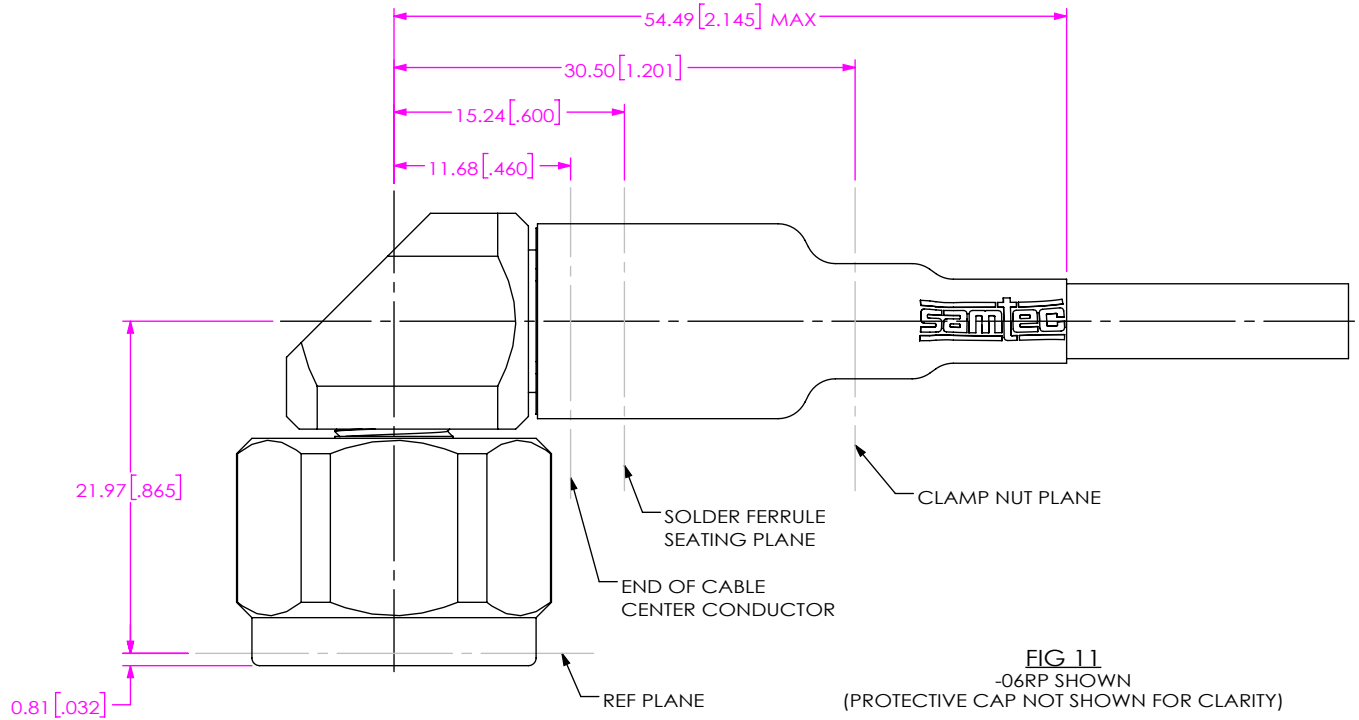
PROPRIETARY NOTE
 THIS DOCUMENT CONTAINS CONFIDENTIAL AND PROPRIETARY INFORMATION AND ALL DESIGN, MANUFACTURING, REPRODUCTION, USE, PATENT RIGHTS AND SALES RIGHTS ARE EXPRESSLY RESERVED BY SAMTEC, INC. THIS DOCUMENT SHALL NOT BE DISCLOSED, IN WHOLE OR PART, TO ANY UNAUTHORIZED PERSON OR ENTITY NOR REPRODUCED, TRANSFERRED OR INCORPORATED IN ANY OTHER PROJECT IN ANY MANNER WITHOUT THE EXPRESS WRITTEN CONSENT OF SAMTEC, INC.

SHEET SCALE: 2:1
 DO NOT SCALE DRAWING



520 PARK EAST BLVD, NEW ALBANY, IN 47150
 PHONE: 812-944-6733 FAX: 812-948-5047
 e-Mail: info@SAMTEC.com code 55322

DESCRIPTION:	RF180 CABLE ASSEMBLY
DWG. NO.	RF180-XXXX-XXXXXX-XXXX
BY: HENSON T	10/13/2020 SHEET 6 OF 7



PROPRIETARY NOTE
 THIS DOCUMENT CONTAINS CONFIDENTIAL AND PROPRIETARY INFORMATION AND ALL DESIGN, MANUFACTURING, REPRODUCTION, USE, PATENT RIGHTS AND SALES RIGHTS ARE EXPRESSLY RESERVED BY SAMTEC, INC. THIS DOCUMENT SHALL NOT BE DISCLOSED, IN WHOLE OR PART, TO ANY UNAUTHORIZED PERSON OR ENTITY NOR REPRODUCED, TRANSFERRED OR INCORPORATED IN ANY OTHER PROJECT IN ANY MANNER WITHOUT THE EXPRESS WRITTEN CONSENT OF SAMTEC, INC.



520 PARK EAST BLVD, NEW ALBANY, IN 47150
 PHONE: 812-944-6733 FAX: 812-948-5047
 e-Mail: info@SAMTEC.com code 55322

SHEET SCALE: 2:1
 DO NOT SCALE DRAWING

DESCRIPTION:	RF180 CABLE ASSEMBLY
DWG. NO.	RF180-XXXX-XXXXXX-XXXX
BY: HENSON T	10/13/2020 SHEET 7 OF 7