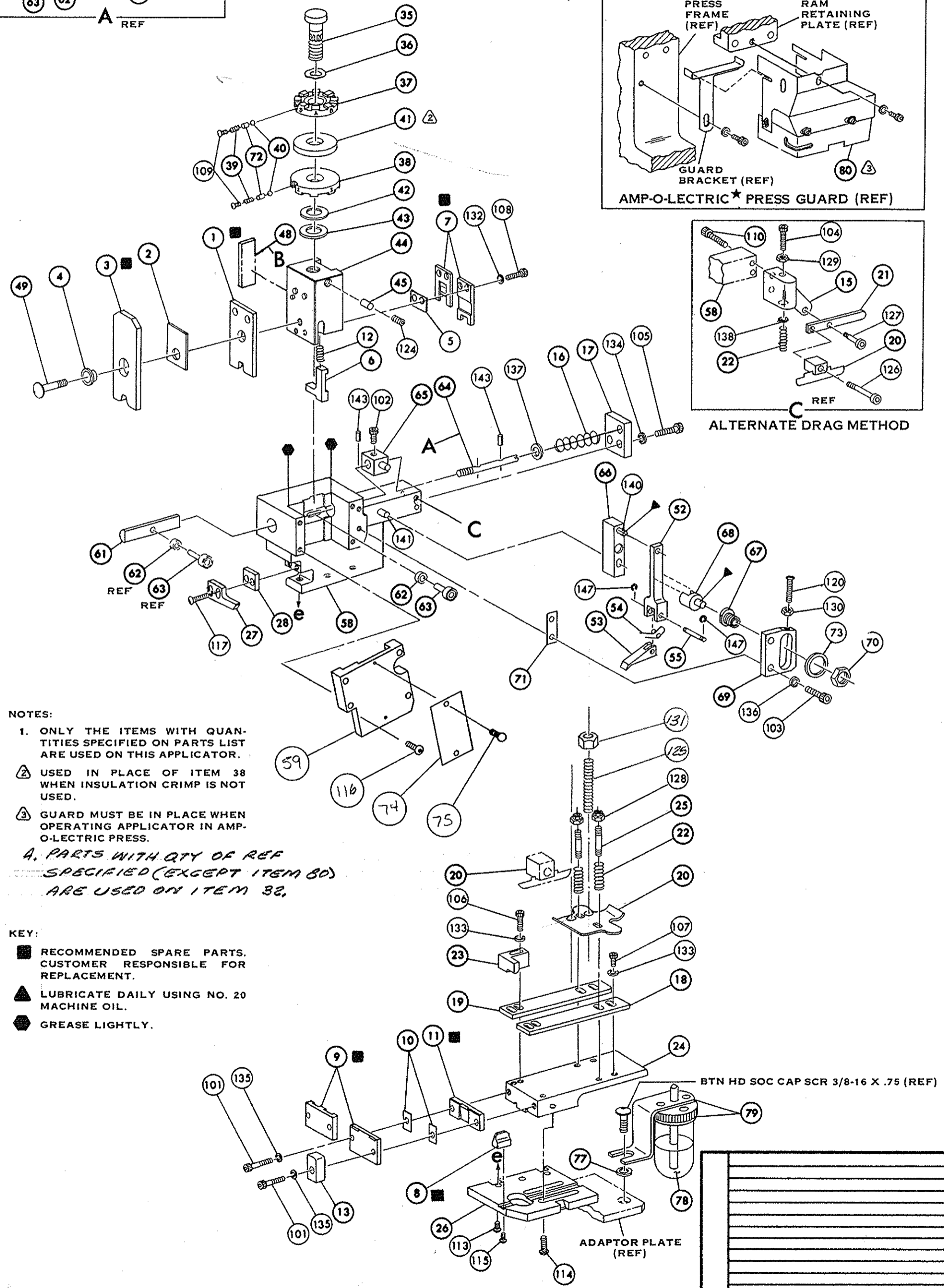
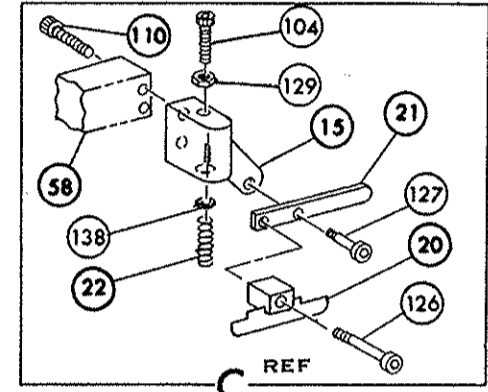
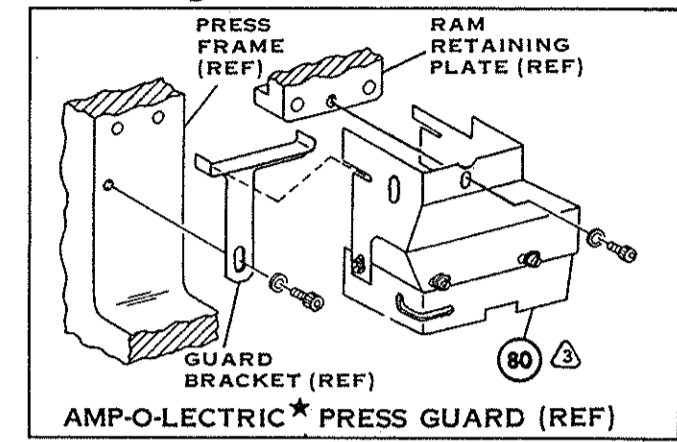
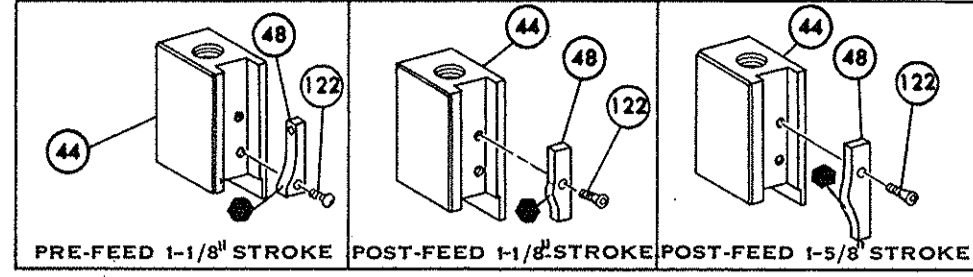
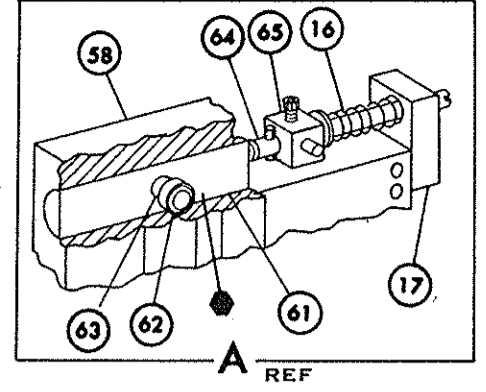


THIS DRAWING IS A CONTROLLED DOCUMENT.

NO. 466019-1



NOTES: 1. ONLY THE ITEMS WITH QUANTITIES SPECIFIED ON PARTS LIST ARE USED ON THIS APPLICATOR. USED IN PLACE OF ITEM 38 WHEN INSULATION CRIMP IS NOT USED. GUARD MUST BE IN PLACE WHEN OPERATING APPLICATOR IN AMP-O-LECTRIC PRESS. A. PARTS WITH QTY OF REF SPECIFIED (EXCEPT ITEM 80) ARE USED ON ITEM 32.

KEY: RECOMMENDED SPARE PARTS. CUSTOMER RESPONSIBLE FOR REPLACEMENT. LUBRICATE DAILY USING NO. 20 MACHINE OIL. GREASE LIGHTLY.

Parts list table with columns: REF, PART NO., DESCRIPTION, NO., REQ., PART NO., DESCRIPTION, NO. Includes items like SPACER, HEX NUT, PLATE, ADJ, SHAFT, PIVOT, BUSHING, LEVER, INTERMEDIATE, BLOCK, PIVOT, SCREW, ADJ, PIN, CAM ROLLER, CAM, ROLLER, ROD, FEED, CAP, RAM, HOUSING, RING, RETAINING 'C', FEED PIN, PIN, FEED FINGER, SPRING, FEED FINGER, FINGER, FEED, LEVER, TERMINAL, PIN, SLOT SPG, FEED ADJ ROD, PIN, DOWEL, HOUSING, PIN, DOWEL, LEVER, WASH, FLAT, DRAG SPRING, WASH, FLAT, SCR ADJ, WASH, LOCK, FEED ADJ PLATE, WASH, LOCK, SHEAR PLATES, WASH, LOCK, FEED ROD GUIDE, WASH, LOCK, STRIP GUIDE, WASH, LOCK, SHEAR BLADE, NUT, HEX MACH, FEED ADJ PLATE, NUT, HEX MACH, DRAG SPRING, NUT, HEX SELF-LKG, DRAG STUDS, SCR, SKT HD SHLD, DRAG ARM, SCR, SKT HD SHLD, DRAG, SCR SKT SET, NYLOK RAM, SCR, FLAT HD SOC CAP, CAM, SCR, RDH HD MACH, FEED ADJ, SCR, DRIVE, ID PLATE, SCR, BTN HD SKT CAP, STRIPPER, SCR, HD SKT CAP, HSG CAP, SCR, HD SKT CAP, NYLOK ANVIL, SCR, HD SKT CAP, STR GDE PL, SCR, HD SKT CAP, BASE PLATE, SCR, SKT HD CAP, DRAG ADAPTOR, SCR, SKT HD CAP, NYLOK C. P. DISC, SCR, SKT HD CAP, SHEAR BLADE, SCR, SKT HD CAP, STRIP GUIDE, SCR, SKT HD CAP, STRIP GUIDE, SCR, SKT HD CAP, FD ROD GUIDE, SCR, SKT HD CAP, DRAG SPRING, SCR, SKT HD CAP, FD ADJ PLATE, SCR, SKT HD CAP, PIVOT BLK, SCR, SKT HD CAP, SHEAR PLATES, GUARD, WINDOW, LUBRICATOR ASSY, OIL SYNTHETIC, SPACER, LUBRICATOR BRACKET, SCR, DRIVE, ID PLATE, PLATE, ID, WASHER, FLAT, SPECIAL, SPRING, ASSIST.

Revision record table with columns: LTR, REVISION RECORD, ECN, DATE, LTR, REVISION RECORD, ECN, DATE. Includes entries for ECN 0150-0684-04, 0150-0203-00, REV PER ECN A-153588, REV PER ECN R-3078, REV PER ECN R2290, REV PER ECN R 2178, ADD TERM 62684.

Form containing CRIMPING DATA, THIS APPLICATOR WILL APPLY, and AMP logo. Includes fields for PAD LETTER, CRIMP HEIGHT, WIRE SIZE, WIRE STRIP LENGTH, RINGS, SPADES, CRIMP, SIZE, TYPE, FEED, PRESS REF., WIRE, INSULATION, INSULATION RANGE, WIRE RANGE, APPLICATOR INSTRUCTION, REMARKS (AMPOMATOR), SET-UP GAGE, LAYOUT NO., and AMP logo with address: AMP INCORPORATED HARRISBURG, PENNA.