

MATERIALS AND FINISHES

BODY, CAP SEE TABLE  
PLATED GOLD

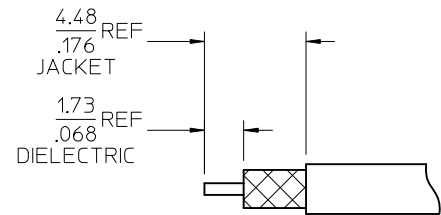
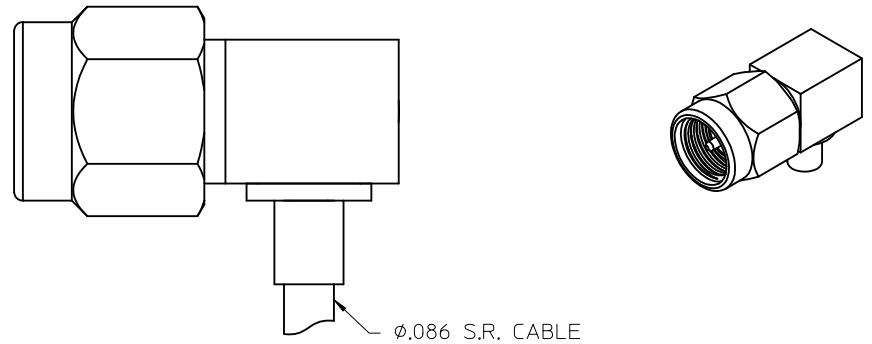
COUPLING NUT SEE TABLE  
PLATED GOLD

CENTER CONTACT SEE TABLE  
PLATED GOLD

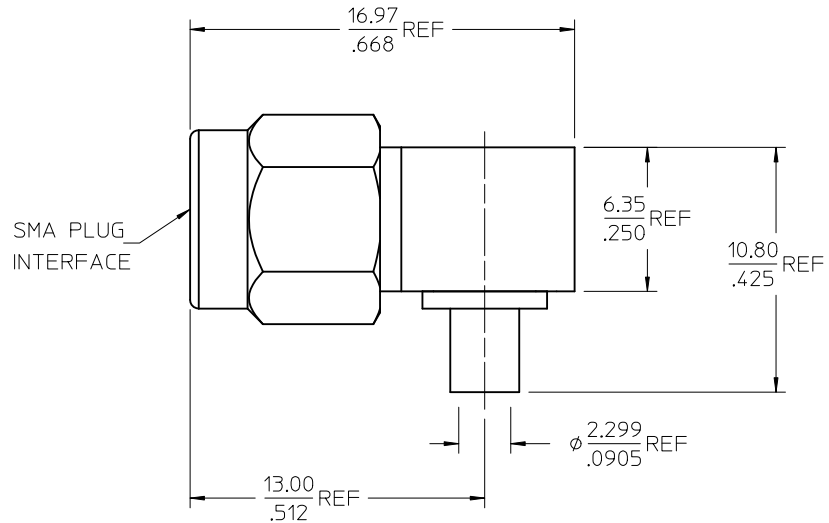
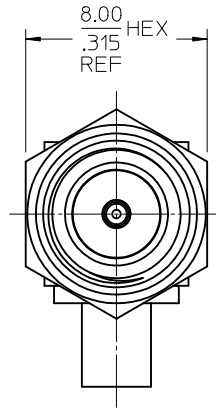
INSULATOR TEFLON

RETAINING RING BERYLLIUM COPPER

GASKET SILICONE RUBBER



RECOMMENDED STRIPPING DIMENSIONS  
RG405 WITH JACKET SHOWN



73251-0654	BRASS	BRASS	BRASS	BRASS	BULK
73251-0653	BRASS	BRASS	BRASS	BRASS	SINGLE BAG
73251-0652	STAINLESS STEEL	BERYLLIUM COPPER	STAINLESS STEEL	STAINLESS STEEL	BULK
73251-0651	BRASS	BRASS	BRASS	BRASS	BULK
73251-0650	BRASS	BRASS	STAINLESS STEEL	BRASS	BULK
PART NO.	BODY	CONTACT	COUPLING NUT	CAP	PACKAGING

CHG: UPDATE VIEW	EC NO: URF2013-0460 DRWN: JWIENER 2013/02/08 CHKD: SSS 2013/02/08 APPR: JWIENER 2013/02/11	QUALITY SYMBOLS ▽=0 ▽=0 ▽=0	GENERAL TOLERANCES (UNLESS SPECIFIED)		DIMENSION STYLE	SCALE	DESIGN UNITS	THIRD ANGLE PROJECTION	
			mm	INCH	MM/IN	INCH	INCH		
A5	REV	DESCRIPTION	4 PLACES ±	---	±	---	DRAWN BY DATE		TITLE
			3 PLACES ±	---	±	---	TEF	2002/04/01	
			2 PLACES ±	---	±	---	CHECKED BY DATE		DOCUMENT NO.
			1 PLACE ±	---	±	---	2002/04/01		
			0 PLACE ±	---	±	---	APPROVED BY DATE		SHEET NO.
							2002/04/01		
							MATERIAL NO.		
							SEE TABLE		
							ANGULAR ± 2 °		
							DRAFT WHERE APPLICABLE MUST REMAIN WITHIN DIMENSIONS		
							SIZE THIS DRAWING CONTAINS INFORMATION THAT IS PROPRIETARY TO MOLEX INCORPORATED AND SHOULD NOT BE USED WITHOUT WRITTEN PERMISSION		