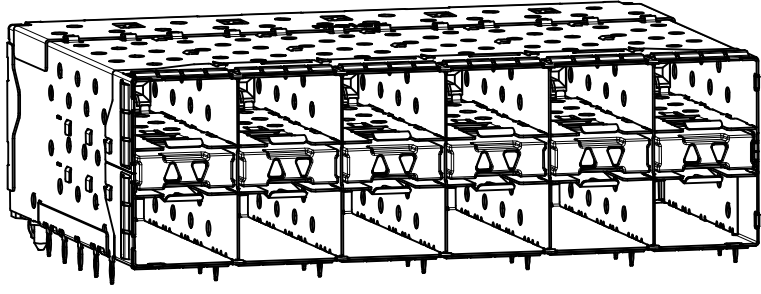
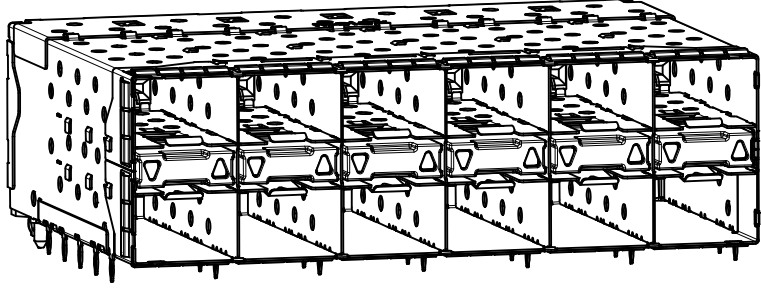


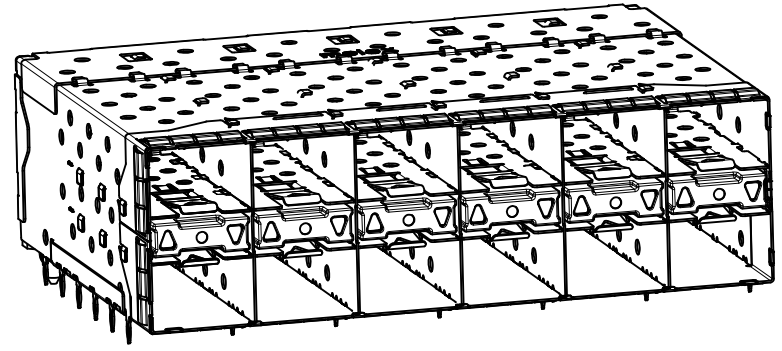
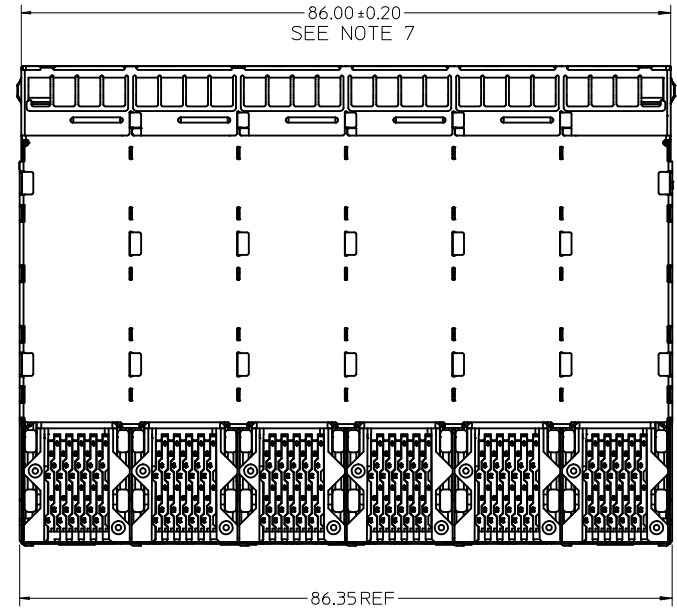
760480001 AND 760485001  
WITH INNER AND OUTER LIGHTPIPPES



760480002 AND 760485002  
WITH INNER LIGHTPIPPES

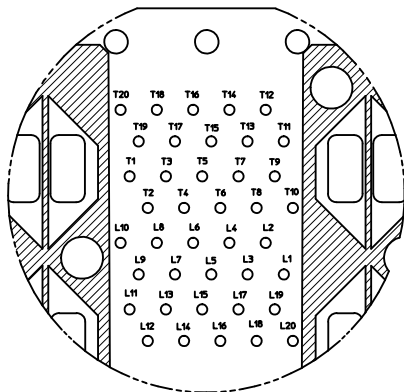


760480003 AND 760485003  
WITH OUTER LIGHTPIPPES

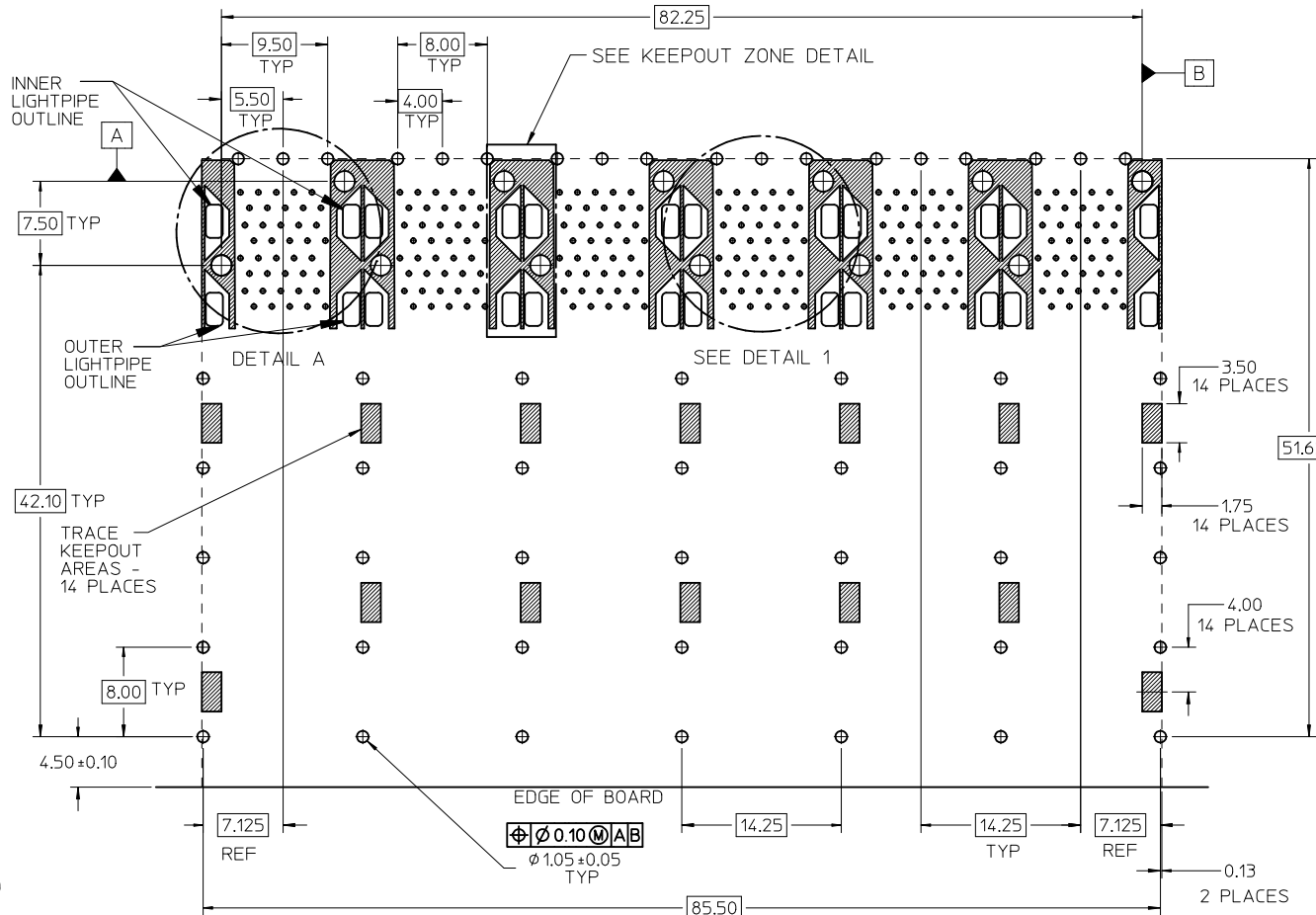


760485004  
WITH OUTER LIGHTPIPPES

SEE SHEET 1 EC NO: UCP2011-2450 DRWN:WOLFE 2011/03/08 CHKD:MBARRA 2011/03/08 APPR:SMILLER 2011/11/09	QUALITY SYMBOLS ∇=0 ∇=0 ∇=0	GENERAL TOLERANCES (UNLESS SPECIFIED)		DIMENSION STYLE <b>MM ONLY</b>		SCALE 2:1	DESIGN UNITS METRIC	THIRD ANGLE PROJECTION		
		mm	INCH	DRAWN BY	DATE	TITILE <b>STACKED SFP+ 2X6 ASSY WITH METAL EMI GASKET AND LIGHTPIPPES</b>				
		4 PLACES ± ---	± ---	MSANDBERG	09/28/2006					
		3 PLACES ± ---	± ---	CHECKED BY	DATE	MOLEX INCORPORATED DOCUMENT NO. SD-76048-001 SHEET NO. 2 OF 5				
2 PLACES ± 0.13	± ---	JLONG	09/28/2006							
1 PLACE ± 0.25	± ---	APPROVED BY	DATE	THIS DRAWING CONTAINS INFORMATION THAT IS PROPRIETARY TO MOLEX INCORPORATED AND SHOULD NOT BE USED WITHOUT WRITTEN PERMISSION						
ANGULAR ± 5 °		KREGNIER	09/28/2006							
DRAFT WHERE APPLICABLE MUST REMAIN WITHIN DIMENSIONS		SEE TABLE								

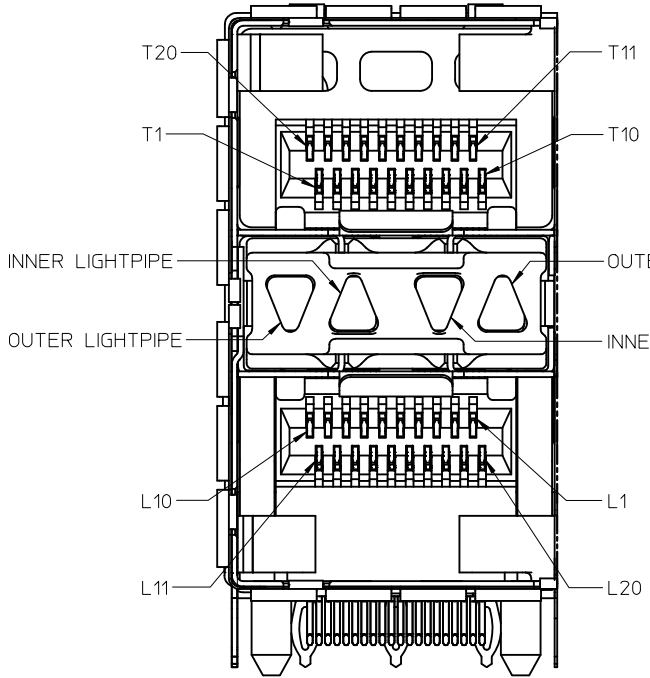


DETAIL 1  
SCALE 6:1



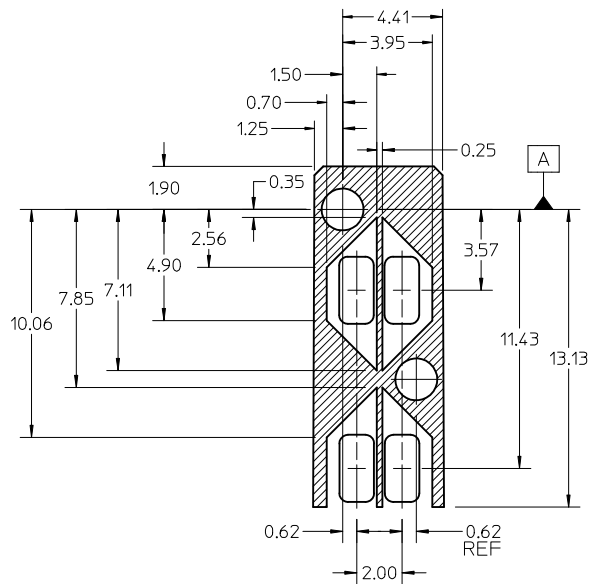
RECOMMENDED PCB LAYOUT - COMPONENT SIDE  
RECOMMENDED PCB THICKNESS - 2.63 MM (.093 INCH)

THE ENTIRE AREA OF THE CONNECTOR FOOTPRINT  
TO BE CONSIDERED THE KEEP OUT AREA FOR COMPONENTS  
(OTHER THAN LIGHT PIPE LED'S)  
THIS AREA IS INDICATED BY THE DASHED LINE



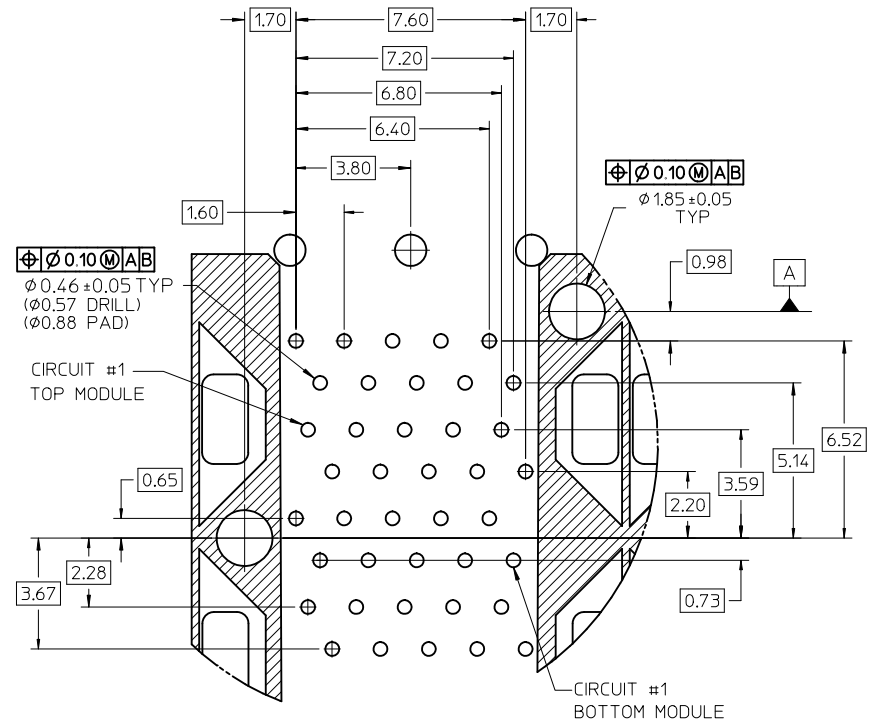
DETAIL 3  
SCALE 6:1

ADD DETAIL 3 EC NO: UCP2011-2450 DRWN:WOLFE 2011/03/08 CHKD:MIBARRA 2011/03/08 APPR:SMILLER 2011/11/09	QUALITY SYMBOLS ▽=0 ▽=0 ▽=0	GENERAL TOLERANCES (UNLESS SPECIFIED)		DIMENSION STYLE MM ONLY		SCALE 3:1	DESIGN UNITS METRIC	THIRD ANGLE PROJECTION																										
		<table border="1"> <tr> <th></th> <th>mm</th> <th>INCH</th> </tr> <tr> <td>4 PLACES</td> <td>± .00</td> <td>± .00</td> </tr> <tr> <td>3 PLACES</td> <td>± .00</td> <td>± .00</td> </tr> <tr> <td>2 PLACES</td> <td>± 0.13</td> <td>± .005</td> </tr> <tr> <td>1 PLACE</td> <td>± 0.25</td> <td>± .010</td> </tr> </table>			mm	INCH	4 PLACES	± .00	± .00	3 PLACES	± .00	± .00	2 PLACES	± 0.13	± .005	1 PLACE	± 0.25	± .010	<table border="1"> <tr> <th>DRAWN BY</th> <th>DATE</th> </tr> <tr> <td>MSANDBERG</td> <td>09/28/2006</td> </tr> <tr> <th>CHECKED BY</th> <th>DATE</th> </tr> <tr> <td>JLONG</td> <td>09/28/2006</td> </tr> <tr> <th>APPROVED BY</th> <th>DATE</th> </tr> <tr> <td>KREGNIER</td> <td>09/28/2006</td> </tr> </table>		DRAWN BY	DATE	MSANDBERG	09/28/2006	CHECKED BY	DATE	JLONG	09/28/2006	APPROVED BY	DATE	KREGNIER	09/28/2006	<b>STACKED SFP+ 2X6 ASSY WITH METAL EMI GASKET AND LIGHTPIPES</b>	
			mm	INCH																														
		4 PLACES	± .00	± .00																														
3 PLACES	± .00	± .00																																
2 PLACES	± 0.13	± .005																																
1 PLACE	± 0.25	± .010																																
DRAWN BY	DATE																																	
MSANDBERG	09/28/2006																																	
CHECKED BY	DATE																																	
JLONG	09/28/2006																																	
APPROVED BY	DATE																																	
KREGNIER	09/28/2006																																	
DRAFT WHERE APPLICABLE MUST REMAIN WITHIN DIMENSIONS		MATERIAL NO. <b>SEE TABLE</b>		DOCUMENT NO. <b>SD-76048-001</b>		SHEET NO. <b>3 OF 5</b>																												



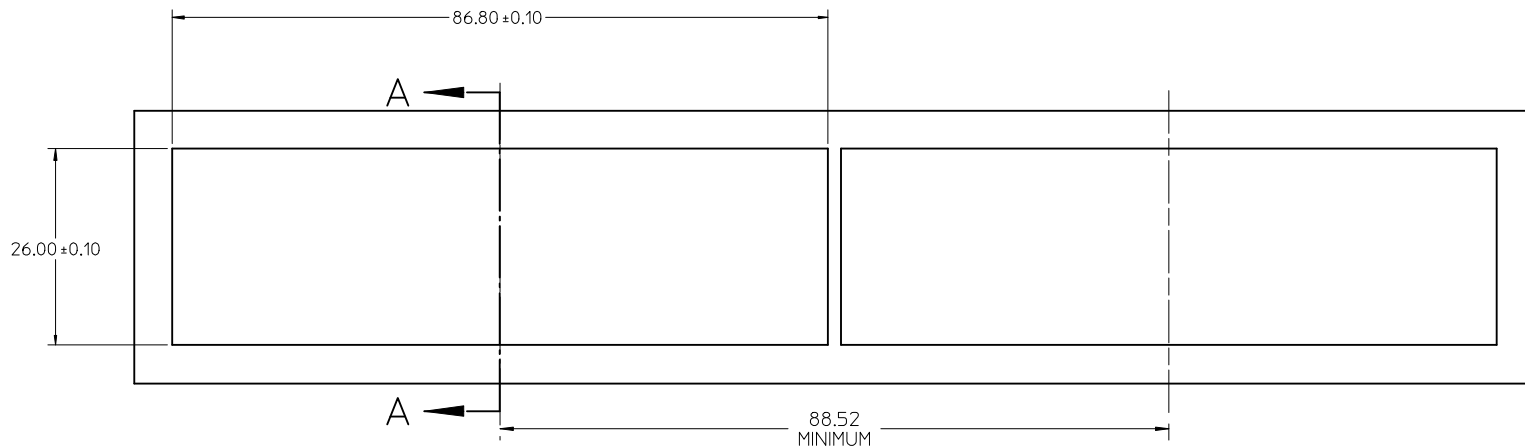
DETAIL - LIGHTPIPE LOCATION AND OTHER ZONES  
SCALE 6:1

THE HATCHED AREA IN THIS VIEW INDICATES ZONES THAT ARE OCCUPIED BY THE PLASTIC HOUSING THAT SEATS AGAINST THE PCB AND BY THE VERTICAL METAL CAGE WALL THAT STOPS JUST SHORT OF THE PCB

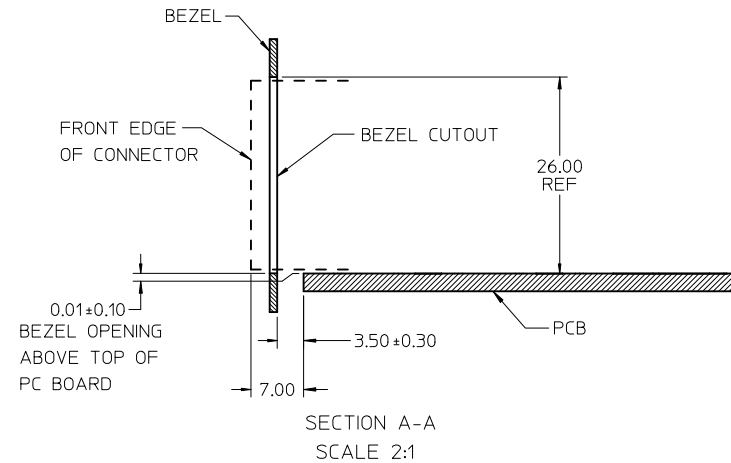


DETAIL A  
SCALE 8:1

SEE SHEET 1 EC NO: UCP2011-2450 DRWN: MWOLFE 2011/03/08 CHKD: MIBARRA 2011/03/08 APPR: SMILLER 2011/11/09	QUALITY SYMBOLS 	GENERAL TOLERANCES (UNLESS SPECIFIED)		DIMENSION STYLE MM ONLY		SCALE 2:1	DESIGN UNITS METRIC	THIRD ANGLE PROJECTION		
				DRAWN BY MSANDBERG		DATE 09/28/2006		TITLE <b>STACKED SFP+ 2X6 ASSY WITH METAL EMI GASKET AND LIGHTPIPES</b>		
				CHECKED BY JLONG		DATE 09/28/2006				
				APPROVED BY KREGNIER		DATE 09/28/2006		MOLEX INCORPORATED DOCUMENT NO. SD-76048-001 SHEET NO. 4 OF 5		
		MATERIAL NO.		SIZE C		THIS DRAWING CONTAINS INFORMATION THAT IS PROPRIETARY TO MOLEX INCORPORATED AND SHOULD NOT BE USED WITHOUT WRITTEN PERMISSION				
DRAFT WHERE APPLICABLE MUST REMAIN WITHIN DIMENSIONS										



BEZEL CUTOUT CENTER SPACING DETAIL  
BEZEL THICKNESS 0.8 - 2.6



ADD SECOND BEZEL CUTOUT EC NO: UCP2011-2450 DRWN:WOLFE 2011/03/08 CHKD:MIBARRA 2011/03/08 APPR:SMILLER 2011/11/09	QUALITY SYMBOLS	GENERAL TOLERANCES (UNLESS SPECIFIED)	DIMENSION STYLE <b>MM ONLY</b>	SCALE <b>3:1</b>	DESIGN UNITS <b>METRIC</b>	THIRD ANGLE PROJECTION
	▽=0	mm INCH	DRAWN BY DATE MSANDBERG 09/28/2006	TITLE <b>STACKED SFP+ 2X6 ASSY WITH METAL EMI GASKET AND LIGHTPIPES</b>	<b>MOLEX INCORPORATED</b>	SHEET NO. <b>5 OF 5</b>
	▽=0	4 PLACES ± --- ± ---	CHECKED BY DATE JLONG 09/28/2006	APPROVED BY DATE KREGNIER 09/28/2006		
	▽=0	3 PLACES ± --- ± ---	1 PLACE ± 0.13 ± ---		MATERIAL NO. <b>SEE TABLE</b>	DOCUMENT NO. <b>SD-76048-001</b>
D REV DESCRIPTION	1 PLACE ± 0.25 ± --- ANGULAR ± 5°	DRAFT WHERE APPLICABLE MUST REMAIN WITHIN DIMENSIONS	SIZE 	THIS DRAWING CONTAINS INFORMATION THAT IS PROPRIETARY TO MOLEX INCORPORATED AND SHOULD NOT BE USED WITHOUT WRITTEN PERMISSION		