

[ SIM CARD PIN-MAP ]

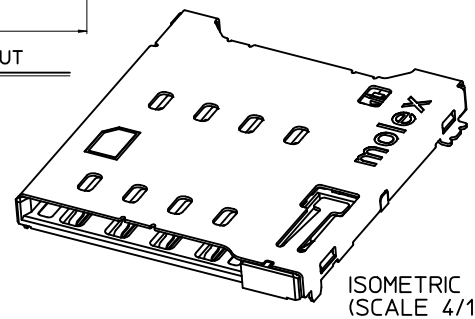
PIN NO.	DESCRIPTION
#1	Vcc(Supply V)
#2	RST(Reset)
#3	CLK(Clock)
#4	Reserved
#5	GND
#6	Vpp(Program V)
#7	I/O
#8	Reserved

G1~G6	GND
Detect	Card Detector
Switch	Common/GND

Card Insertion Condition	DETECT SWITCH
Without Card	Open (OFF)
Card Insertion	Close (ON)



NOTES

1. MATERIALS: SEE TABLE
2. FINISHES: SEE TABLE
3. MATES WITH: MICRO SIM(UICC) CARD
4. PRODUCT SPECIFICATIONS: PS-104118-001
5. PACKING SPECIFICATIONS: PK-104118-001
6. COPLANARITY OF SOLDER TAILS: 0.1mm MAX.
7. MISALIGNMENT OF SOLDER TAIL FROM "Z" UPPER DIRECTION 0.05mm MAX., LOWER DIRECTION 0.1mm MAX.
8. CARD LOCK DIMENSION(1.1±0.15) IS WITH STANDARD CARD

NO.	PARTS NAME	MATERIALS	FINISHES
1	CONTACT TERMINAL(8P)	COPPER ALLOY	CONTACT : GOLD 0.34μm MIN. SOLDER : GOLD 0.054μm MIN. BASE : NICKEL 1.274μm MIN.
2	METAL SHELL	STAINLESS STEEL	NICKEL 1.274μm MIN.
3	HOUSING	LIQUID CRYSTAL POLYMER	UL94V-0
4	HEART CAM	LIQUID CRYSTAL POLYMER	UL94V-0
5	PIN ROD	STAINLESS STEEL	NONE
6	SPRING	STAINLESS STEEL	NONE
7	DETECT TERMINAL	PHOSPHOR BRONZE	CONTACT : GOLD 0.14μm MIN. SOLDER : TIN 1.54μm MIN. BASE : NICKEL 1.274μm MIN.
8	SWITCH TERMINAL	PHOSPHOR BRONZE	

REVISED  
 EC NO: KOR2011-0145  
 DRWN: ICYANG  
 CHKD: YS00.KIM  
 APPR: YUNSIKKIM

QUALITY SYMBOLS  
 ▼=0  
 ◁=0

GENERAL TOLERANCES (UNLESS SPECIFIED)

	mm	INCH
4 PLACES	± 0.12	± 0.005
3 PLACES	± 0.15	± 0.006
2 PLACES	± 0.20	± 0.008
1 PLACE	± 0.25	± 0.010

ANGULAR ± 1°

DRAFT WHERE APPLICABLE  
 MUST REMAIN WITHIN DIMENSIONS

DIMENSION STYLE  
 MM ONLY

SCALE  
 5/1

DRAWN BY  
 IC.YANG

CHECKED BY  
 SH. JOO

APPROVED BY  
 YUNSIKKIM

MATERIAL NO.  
 SEE TABLE

DESIGN UNITS  
 METRIC

THIRD ANGLE PROJECTION

MICRO SIM SOCKET 1.6H  
 PUSH-PUSH 8P

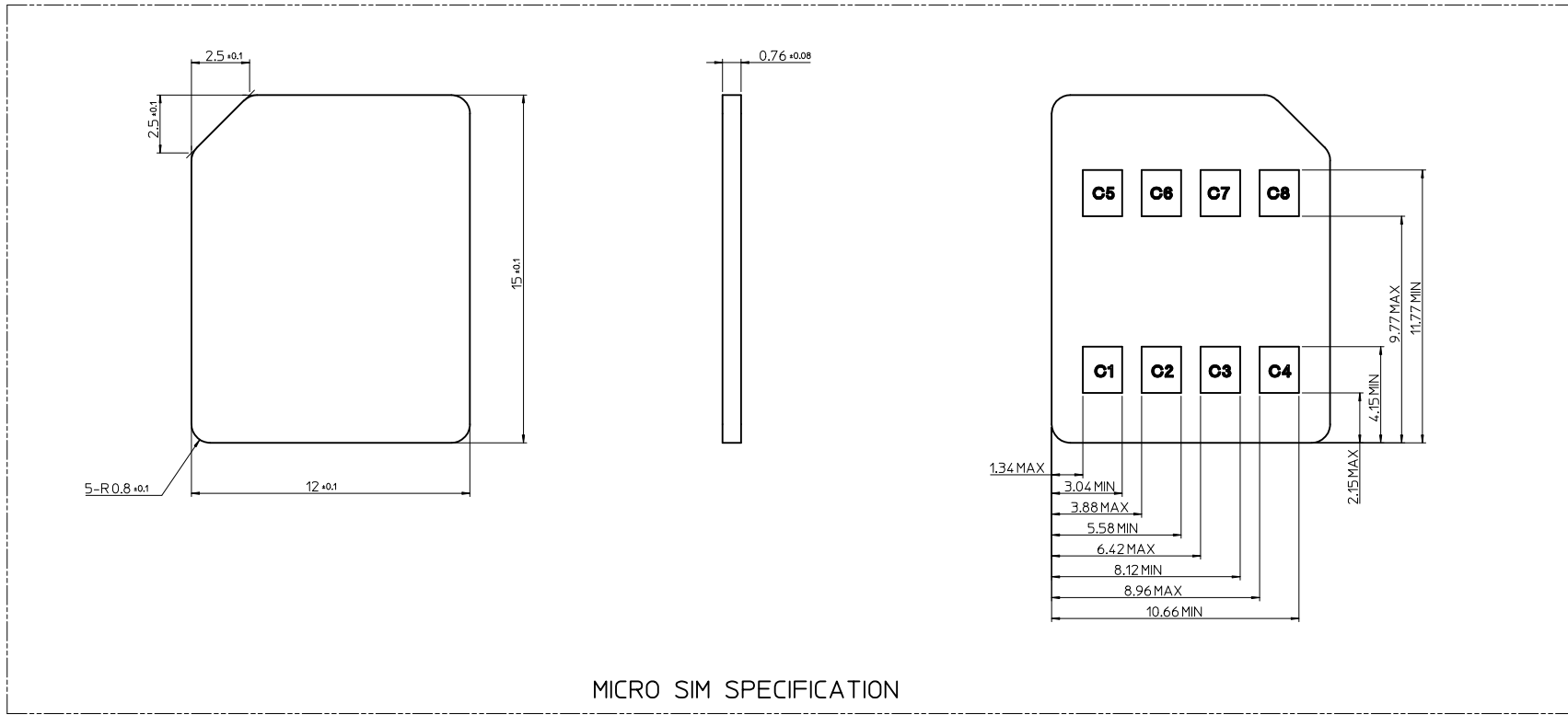
MOLEX INCORPORATED

SD-104118-001

1 OF 3

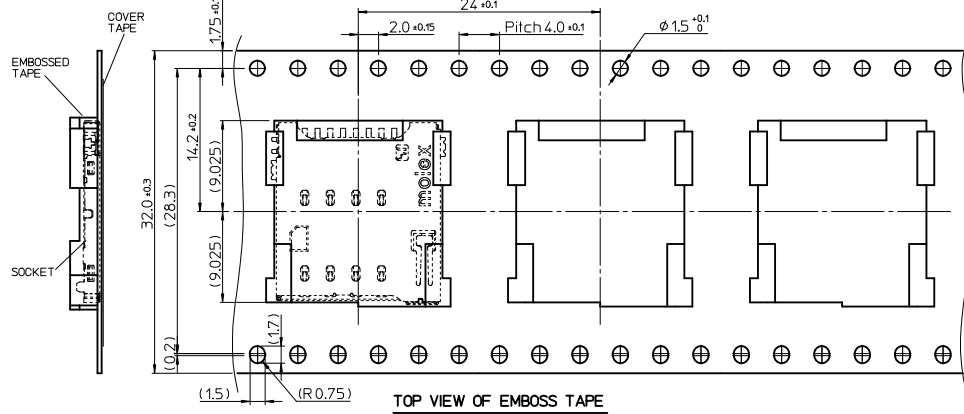
THIS DRAWING CONTAINS INFORMATION THAT IS PROPRIETARY TO MOLEX INCORPORATED AND SHOULD NOT BE USED WITHOUT WRITTEN PERMISSION

REFERENCE DRAWING



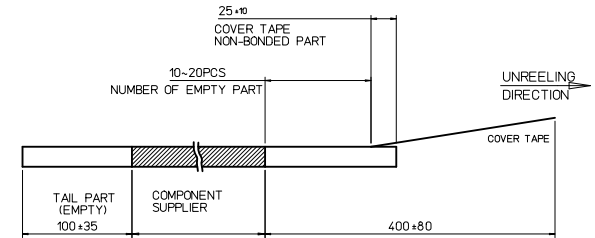
MICRO SIM SPECIFICATION

<b>NEW RELEASE</b> EC NO: KOR2011-0145 2011/09/08 DRWN: ICYANG 2011/09/08 CHKD: YS00.KIM 2011/09/08 APPR: YUNSIKKIM 2011/09/19	QUALITY SYMBOLS	GENERAL TOLERANCES (UNLESS SPECIFIED)	DIMENSION STYLE	SCALE	DESIGN UNITS	THIRD ANGLE PROJECTION
	$\nabla=0$ $\square=0$	mm    INCH 4 PLACES $\pm$ --- $\pm$ --- 3 PLACES $\pm$ 0.12 $\pm$ --- 2 PLACES $\pm$ 0.12 $\pm$ --- 1 PLACE $\pm$ 0.15 $\pm$ --- ANGULAR $\pm$ 1 °	MM ONLY	5/1	METRIC	
	DESCRIPTION	DRAFT WHERE APPLICABLE MUST REMAIN WITHIN DIMENSIONS	DRAWN BY DATE	TITLE		
	REV		IC. YANG 2010.12.16	MICRO SIM SOCKET 1.6H PUSH-PUSH 8P		
A1			CHECKED BY DATE	MOLEX INCORPORATED		
			SH. JOO 2010.12.16	DOCUMENT NO.		
			APPROVED BY DATE	SHEET NO.		
			YUNSIKKIM 2011/08/26	SD-104118-001		
			MATERIAL NO.	2 OF 3		
			SEE SHEET 1	THIS DRAWING CONTAINS INFORMATION THAT IS PROPRIETARY TO MOLEX INCORPORATED AND SHOULD NOT BE USED WITHOUT WRITTEN PERMISSION		

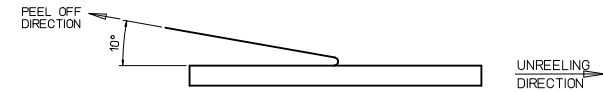


**NOTES**

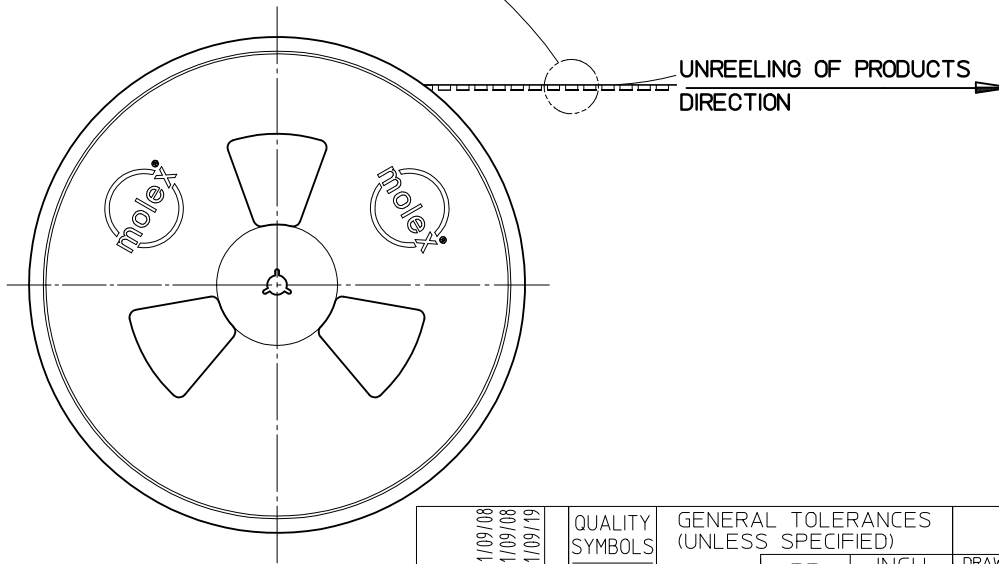
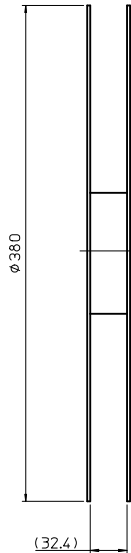
1. QUANTITY OF PRODUCTS : 1,200 PCS / 1 REEL
2. LEAD LENGTH



3. PEELING OFF FORCE OF COVER TAPE : 0.1N~0.59N(10.2~60gf)  
(PEELING DIRECTION AS BELOW)  
- PEELING OFF SPEED : 300mm/Min.(Ref.)



4. MATERIALS OF EMOSS CARRIER AND COVER TAPE :  
PET(POLYETHYLEN TEREPHTHALATE)



<p><b>NEW RELEASE</b> EC NO: KOR2011-0145 2011/09/08 DRWN: ICYANG 2011/09/08 CHKD: YS00.KIM 2011/09/08 APPR: YUNSIKKIM 2011/09/19</p>	<p>QUALITY SYMBOLS ▽=0 ◻=0</p>	GENERAL TOLERANCES (UNLESS SPECIFIED)		DIMENSION STYLE MM ONLY		SCALE 2/1	DESIGN UNITS METRIC	THIRD ANGLE PROJECTION		
			mm	INCH	DRAWN BY IC.YANG	DATE 2010.12.16	TITLE MICRO SIM SOCKET 1.6H PUSH-PUSH 8P			
		4 PLACES	± ---	± ---	CHECKED BY SH. JOO	DATE 2010.12.16	MOLEX INCORPORATED DOCUMENT NO. SD-104118-001 SHEET NO. 3 OF 3			
		3 PLACES	± 0.12	± ---	APPROVED BY YUNSIKKIM	DATE 2011/08/26				
	2 PLACES	± 0.12	± ---	MATERIAL NO. <b>SEE SHEET 1</b>						
	1 PLACE	± 0.15	± ---	SIZE A3		THIS DRAWING CONTAINS INFORMATION THAT IS PROPRIETARY TO MOLEX INCORPORATED AND SHOULD NOT BE USED WITHOUT WRITTEN PERMISSION				
<p>ANGULAR ± 1 °</p>		<p>DRAFT WHERE APPLICABLE MUST REMAIN WITHIN DIMENSIONS</p>								