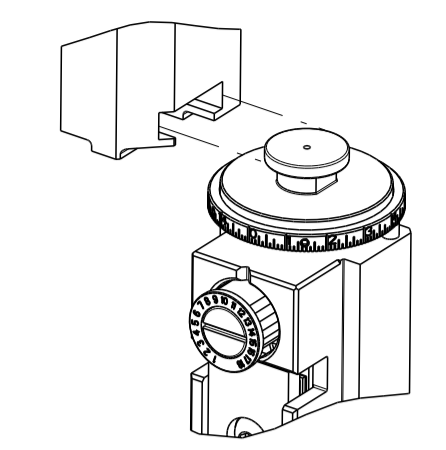


| PART NUMBER | REVISION | DESCRIPTION | FEED TYPE |
|-------------|----------|----------------------------------|------------|
| 2266026-1 | C | FINE CRIMP HEIGHT ADJUST | MECHANICAL |
| 2266026-2 | C | FINE CRIMP HEIGHT ADJUST | PNEUMATIC |
| 7-2266026-1 | C | MECHANICAL AND CRIMP TOOLING KIT | MECHANICAL |
| 7-2266026-2 | C | PNEUMATIC AND CRIMP TOOLING KIT | PNEUMATIC |
| 7-2266026-7 | A | CRIMP TOOLING KIT | - |

ATLANTIC VERSION TERMINATOR INTERFACE ADAPTER



| APPLICATOR DATA | | |
|-----------------|----------------|------|
| CRIMP | SIZE | TYPE |
| WIRE | 1.40 mm [.055] | F |
| INSUL | 1.40 mm [.055] | F |

APPLICATOR INSTRUCTIONS
408-35042

| TERMINAL DATA: SUMITOMO TERMINAL SUMITOMO CRIMP SPECIFICATION | | | |
|---|------------------------------|------------------------------------|--------------------------------|
| TERMINAL NAME: TERMINAL | | | |
| WIRE STRIP LENGTH | INSULATION DIAMETER RANGE | TERMINAL APPLICATION SPECIFICATION | TERMINALS APPLIED |
| 4.00-4.50 mm [.157-.177 IN] | Ø1.00-1.50 mm [.039-.060 IN] | NONE | TE TERMINAL 2113372-1 |
| | | | SUMITOMO TERMINAL 8100-4029 |

| TERMINAL DATA: SUMITOMO TERMINAL SUMITOMO CRIMP SPECIFICATION | | | |
|---|------------------------------|------------------------------------|--------------------------------|
| TERMINAL NAME: TERMINAL | | | |
| WIRE STRIP LENGTH | INSULATION DIAMETER RANGE | TERMINAL APPLICATION SPECIFICATION | TERMINALS APPLIED |
| 4.00-4.50mm [.157-.177 IN] | Ø1.00-1.50 mm [.039-.060 IN] | NONE | TE TERMINAL 1832368-2 |
| | | | SUMITOMO TERMINAL 8100-4028 |

| WIRE SIZE | CRIMP HEIGHT mm [INCH] | CRIMP HEIGHT REFERENCE SETTING |
|---------------|----------------------------|--------------------------------|
| AVSS 0.30mm2 | 0.80+/-0.05 [.031+/- .002] | 5.9 |
| CHFUS 0.35mm2 | 0.75+/-0.05 [.030+/- .002] | 6.5 |
| CHFUS 0.22mm2 | 0.70+/-0.05 [.028+/- .002] | 7.0 |

| WIRE SIZE | CRIMP HEIGHT mm [INCH] | CRIMP HEIGHT REFERENCE SETTING |
|---------------|----------------------------|--------------------------------|
| AVSS 0.30mm2 | 1.00+/-0.05 [.039+/- .002] | 2.8 |
| CHFUS 0.35mm2 | 0.95+/-0.05 [.037+/- .002] | 3.4 |
| CHFUS 0.22mm2 | 0.90+/-0.05 [.035+/- .002] | 3.9 |

- 1 RECOMMENDED SPARE PARTS
- 2 REFER TO SUPPLIED INSTRUCTION SHEET FOR CLEANING, LUBRICATION AND STORAGE OF APPLICATOR.
- 3 APPLY PART NUMBER 2-23419-6 LOCTITE TO THREADS OF ITEM 242.
- 4 CRIMP HEIGHT REFERENCE SETTING WAS THE SETTING USED WHEN THE APPLICATOR WAS QUALIFIED AT THE FACTORY. ADJUSTMENT MAY BE NECESSARY WHEN RUNNING APPLICATOR IN THE FIELD.
- 5. UNLESS SPECIFIED OTHERWISE TORQUE VALUES SHALL BE USED PER DOCUMENT, 101-35000.

***WARNING**
ON INSTALLATION, SET WIRE DISC TO CRIMP HEIGHT REFERENCE SETTING FOR LARGEST WIRE SIZE. CRIMP HEIGHT REFERENCE SETTINGS GREATER THAN THE VALUE SHOWN MAY CAUSE DAMAGE TO THE CRIMP TOOLING. REFER TO THE INSTRUCTION SHEET FOR PROPER SETUP AND ADJUSTMENTS.

| LOC | DIST | REVISIONS | | | |
|-----|------|-------------|---------------|-----------|--------|
| P | LTN | DESCRIPTION | DATE | OWN | APVD |
| A | 66 | B | ECR-15-018565 | 22DEC2015 | MR JDG |
| | | C | ECR-19-004656 | 24MAR2019 | TB CT |

| | | | | | | | |
|---|-----|-----|-----|-----|-------------|-------------------------------------|---------|
| - | 1 | - | 1 | - | 2119640-1 | PUSH ROD, AIR FEED | 250 |
| - | 1 | - | 1 | - | 1803259-1 | BUSHING, FLANGED | 249 |
| - | 1 | - | 1 | - | 2119641-1 | FEED CAM, AIR FEED | 248 |
| - | 1 | 1 | 1 | 1 | 2119082-8 | CAM, SNAIL, INSULATION ADJUSTMENT | 244 |
| - | 1 | 1 | 1 | 1 | 2079764-1 | WASHER, WAVE SPRING, CREST-TO-CREST | 243 |
| - | 1 | 1 | 1 | 1 | 2119083-1 | RETAINER, INSULATION DIAL | 242 |
| - | 1 | 1 | 1 | 1 | 7-18023-7 | SCR, SKT HD CAP M3 X 4.0 | 241 |
| - | - | 1 | - | 1 | 2119580-1 | MECHANICAL FEED ASSEMBLY | 239 |
| - | 1 | - | 1 | - | 2063440-1 | AIR FEED MODULE | 238 |
| - | 2 | - | 2 | - | 21045-3 | RING, RETAIN, EXTERN, 3/16 CRESCENT | 172 |
| - | REF | REF | REF | REF | 994970-2 | COUNTER, MAGNETIC | 164 |
| - | 1 | - | 1 | - | 240638-1 | SPRING, FEED FINGER | 163 |
| - | 1 | - | 1 | - | 3-23627-7 | PIN, RETAIN, GRVD, 3/16 X .854 | 137 |
| - | 1 | - | 1 | - | 2119799-1 | HOLDER, FEED FINGER, AF | 136 |
| - | 1 | 1 | 1 | 1 | 2844908-1 | SCREW, LOCKING | 99 |
| - | 1 | 1 | 1 | 1 | 2844907-1 | POST, LOCKING | 98 |
| - | 1 | 1 | 1 | 1 | 455888-4 | SPACER, CRIMPER | 82 |
| - | 1 | 1 | 1 | 1 | 1803607-1 | DOCUMENTATION PACKAGE | 71 |
| - | 1 | 1 | 1 | 1 | 2119791-9 | DEPRESSOR, WIRE | 70 |
| - | 1 | 1 | 1 | 1 | 2119740-1 | TAG, IDENTIFICATION | 67 |
| - | 2 | 2 | 2 | 2 | 2168078-1 | SCREW, DRIVE, RH, RoHS, 2 x .188 | 66 |
| - | 1 | 1 | 1 | 1 | 2168083-2 | SCR, SKT HD CAP, RoHS, M4 X 8.0 | 60 |
| - | 1 | 1 | 1 | 1 | 5-18022-5 | SCR, HEX HD CAP, M4 X 6.0 | 59 |
| - | 1 | 1 | 1 | 1 | 1338685-1 | PAWL, FEED | 56 |
| - | 4 | 4 | 4 | 4 | 2168083-3 | SCR, SKT HD CAP, RoHS, M4 X 12.0 | 54 |
| - | 2 | 2 | 2 | 2 | 2168083-3 | SCR, SKT HD CAP, RoHS, M4 X 12.0 | 53 |
| - | 1 | 1 | 1 | 1 | 5018030-1 | NUT, HEX, REG, RoHS, M3 | 52 |
| - | 1 | 1 | 1 | 1 | 811242-5 | BUMPER, HOLD DOWN | 51 |
| - | 1 | 1 | 1 | 1 | 690753-2 | SPACER, TONKER | 50 |
| - | 1 | 2 | 1 | 2 | 18023-9 | SCR, SKT HD CAP M4 X 6.0 | 49 |
| - | - | 1 | - | 1 | 2119652-1 | FEED CAM, PRE FEED | 48 |
| - | - | 1 | - | 1 | 2119653-1 | FEED CAM, POST FEED | 47 |
| - | 1 | 1 | 1 | 1 | 1803583-9 | APPLICATOR BASIC ASSEMBLY, SF | 46 |
| - | 1 | 1 | 1 | 1 | 1803515-1 | RAM ASSEMBLY, SF ATLANTIC | 44 |
| - | 1 | 1 | 1 | 1 | 1803602-1 | SCR, BHSC, RoHS (M8 X 25) | 41 |
| - | 1 | 1 | 1 | 1 | 1752356-3 | SUPPORT, TERMINAL | 34 |
| - | 2 | 2 | 2 | 2 | 2079383-5 | SCR, BHSC, RoHS (M4 X 20) | 33 |
| - | 2 | 2 | 2 | 2 | 2-2844962-4 | SPACER, CYLINDRICAL, STRIP GUIDE | 30 |
| - | 1 | 1 | 1 | 1 | 2844992-1 | ASSEMBLY, STRIP GUIDE | 29 |
| - | 1 | 1 | 1 | 1 | 1320928-2 | STRIP GUIDE | 24 |
| - | 1 | 1 | 1 | 1 | 2168083-2 | SCR, SKT HD CAP, RoHS, M4 X 8.0 | 21 |
| - | 2 | 2 | 2 | 2 | 1-18028-2 | WASHER, FLAT, REG M4 | 20 |
| - | 1 | 1 | 1 | 1 | 2119533-1 | STRIPPER, SIDE FEED | 19 |
| - | 1 | 1 | 1 | 1 | 2119806-1 | INSERT, SHEAR | 13 |
| - | 1 | 1 | 1 | 1 | 3-22280-3 | SPRING, COMPRESSION | 12 |
| - | 1 | 1 | 1 | 1 | 1-356885-4 | STOP, SHEAR | 11 |
| - | 1 | 1 | 1 | 1 | 2119805-1 | SHEAR HOLDER, FRONT | 10 |
| - | 1 | 1 | 1 | 1 | 1803095-6 | FLOATING SHEAR, FRONT | 9 |
| 1 | 2 | 2 | 1 | 1 | 4-1633932-0 | ANVIL, COMBINATION | 8 |
| - | 1 | 1 | 1 | 1 | 240641-9 | SPACER | 7 |
| - | - | - | - | - | - | - | 6 |
| - | 1 | 1 | 1 | 1 | 2119757-5 | DEPRESSOR, SHEAR | 5 |
| - | 1 | 1 | 1 | 1 | 238011-7 | BLOCK, CRIMPER SPACER | 4 |
| 1 | 1 | 2 | 2 | 1 | 1-1633961-2 | CRIMPER, INSULATION F PREMIUM | 3 |
| - | 1 | 1 | 1 | 1 | 455888-4 | SPACER, CRIMPER | 2 |
| 1 | 1 | 2 | 2 | 1 | 1-456402-8 | CRIMPER, WIRE PREMIUM | 1 |
| - | 77 | -72 | -71 | -2 | -1 | PART NO | ITEM NO |

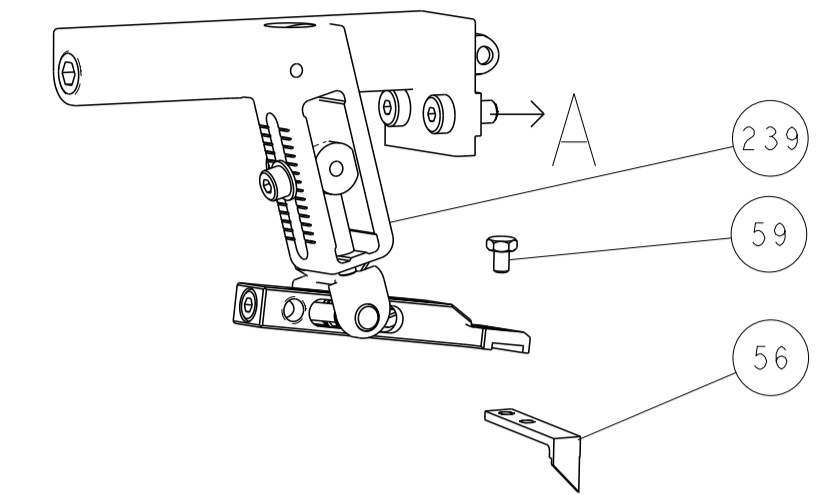
ATLANTIC VERSION
Shown on sheets 1 of 4 & 2 of 4
(Pacific version shown on sheets 3 of 4 & 4 of 4)

| DIMENSIONS: | | TOLERANCES UNLESS OTHERWISE SPECIFIED: | | MATERIAL: | | FINISH: | |
|-------------|---------|--|---------|-----------|---------|----------|----------|
| mm | 0 PLC ± | 1 PLC ± | 2 PLC ± | 3 PLC ± | 4 PLC ± | ANGLES ± | FINISH ± |

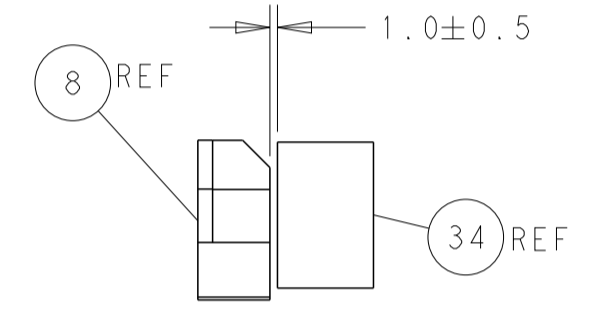
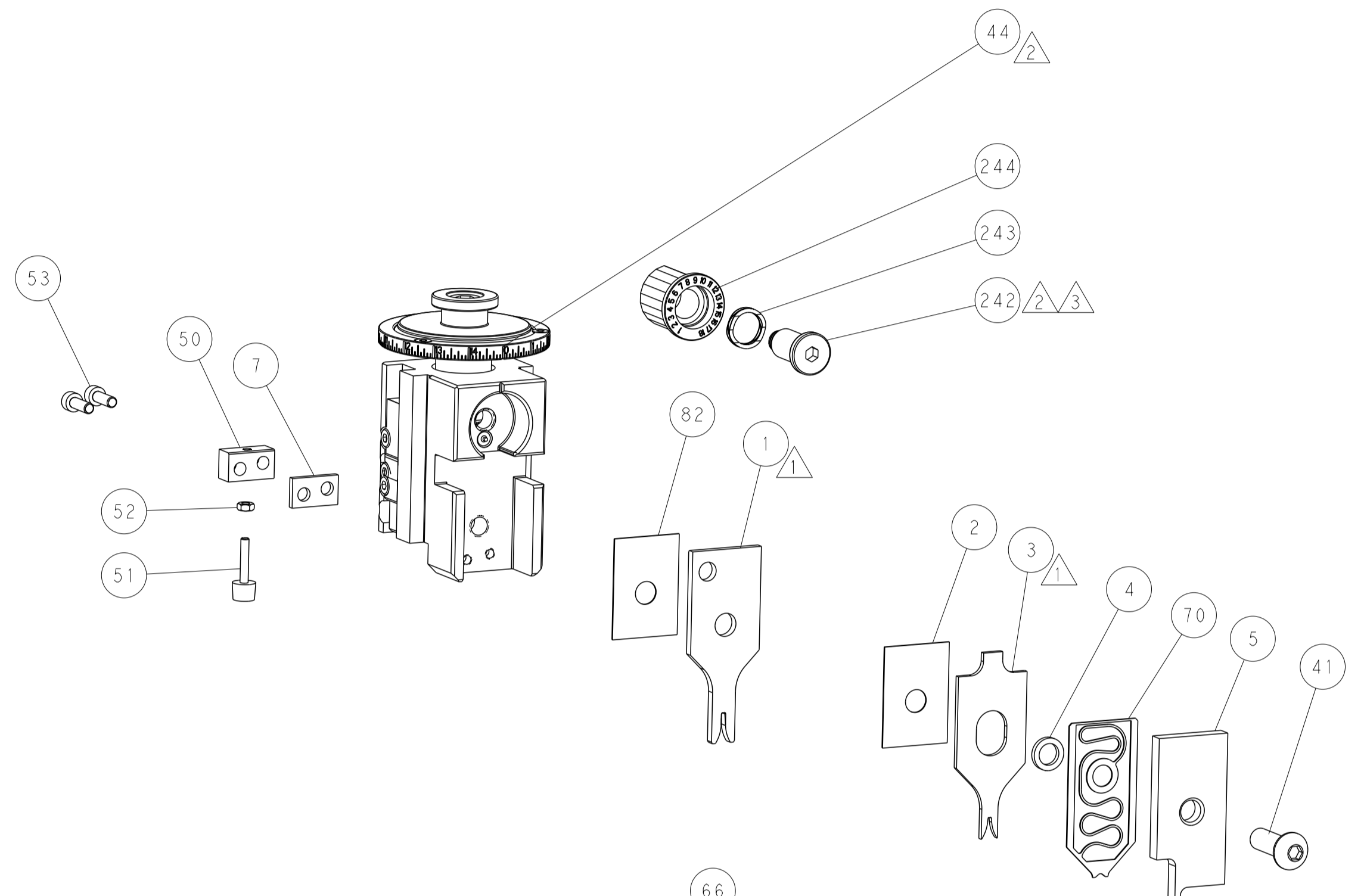
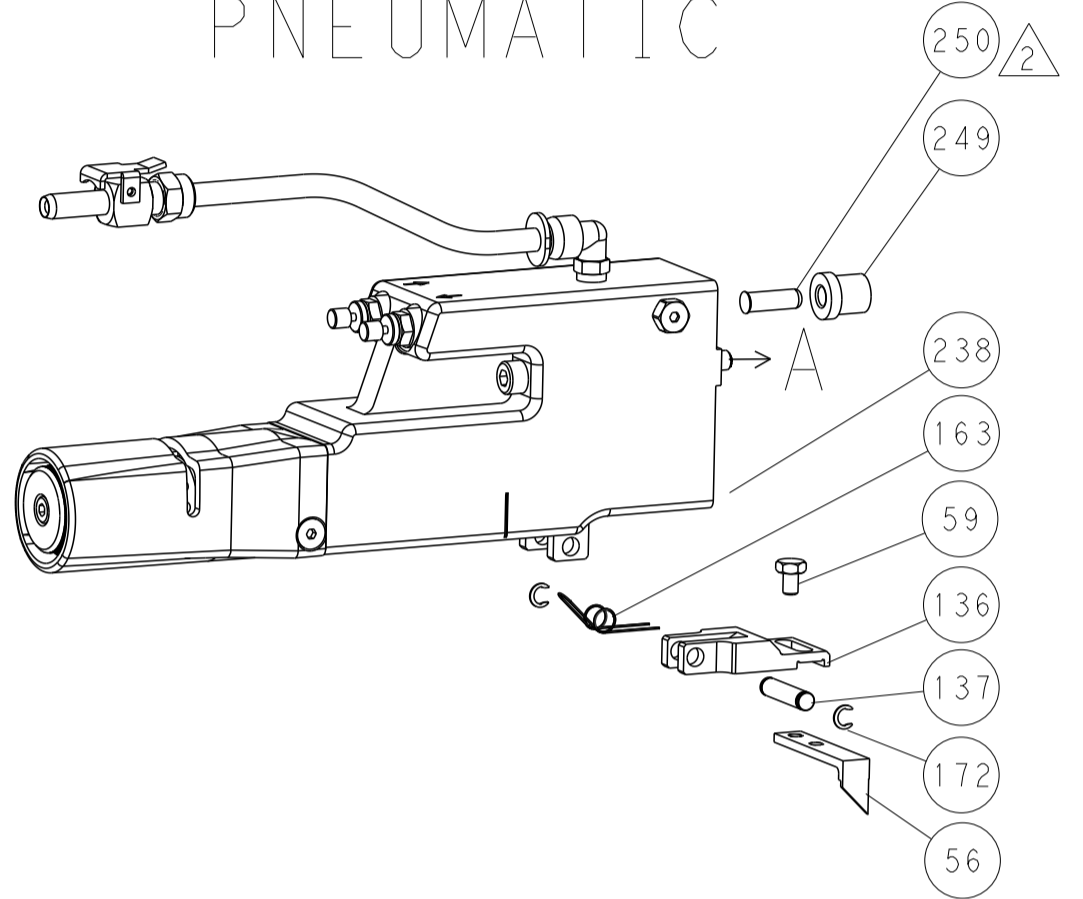
| | | | |
|--|---------|-----------|--|
| OWN | C. CHEN | 26AUG2013 | TE Connectivity Harrisburg, PA 17105-3608 |
| CHK | U. GUO | 26AUG2013 | |
| APVD | J. CRUZ | 26AUG2013 | NAME |
| PRODUCT SPEC | | | Ocean Side Feed Applicator |
| APPLICATION SPEC | | | SIZE |
| MATERIAL | | | CAGE CODE |
| WEIGHT | | | DRAWING NO |
| SCALE | | | RESTRICTED TO |
| Customer Accessible Production Drawing | | | 00779 |
| SCALE | | | ©=2266026 |
| SHEET | | | 1 of 4 |
| REV | | | C |

| LOC | DIST | REVISIONS | | | |
|-----|------|-------------|------|-----|------|
| P | LTN | DESCRIPTION | DATE | DWN | APVD |
| - | - | SEE SHEET 1 | - | - | - |
| | | | | | |
| | | | | | |

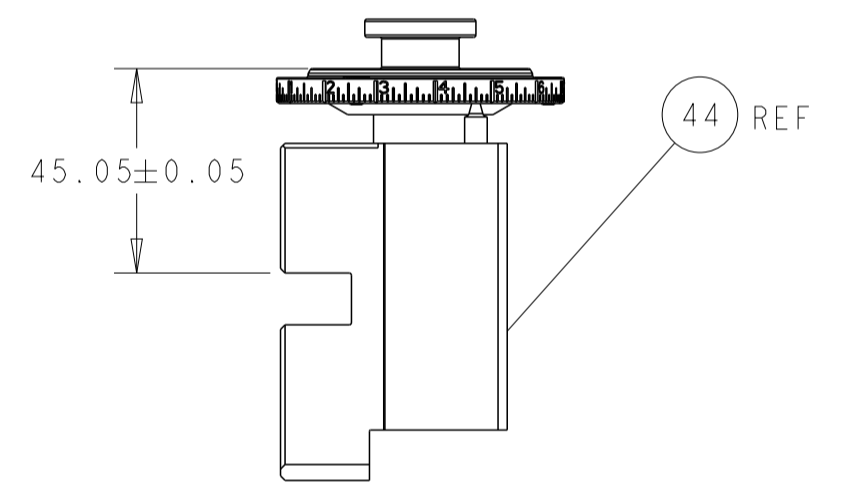
FEED TYPE MECHANICAL



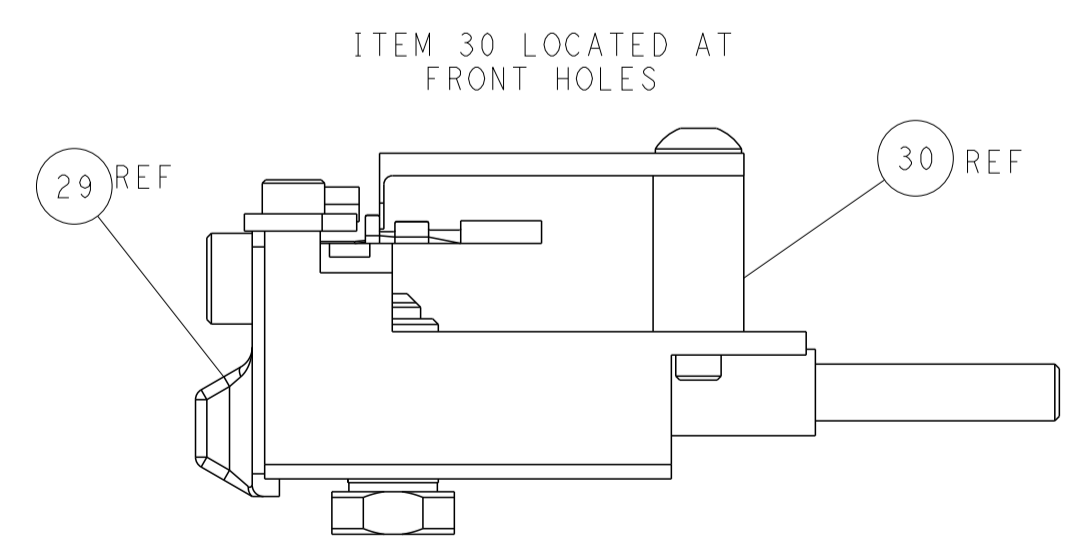
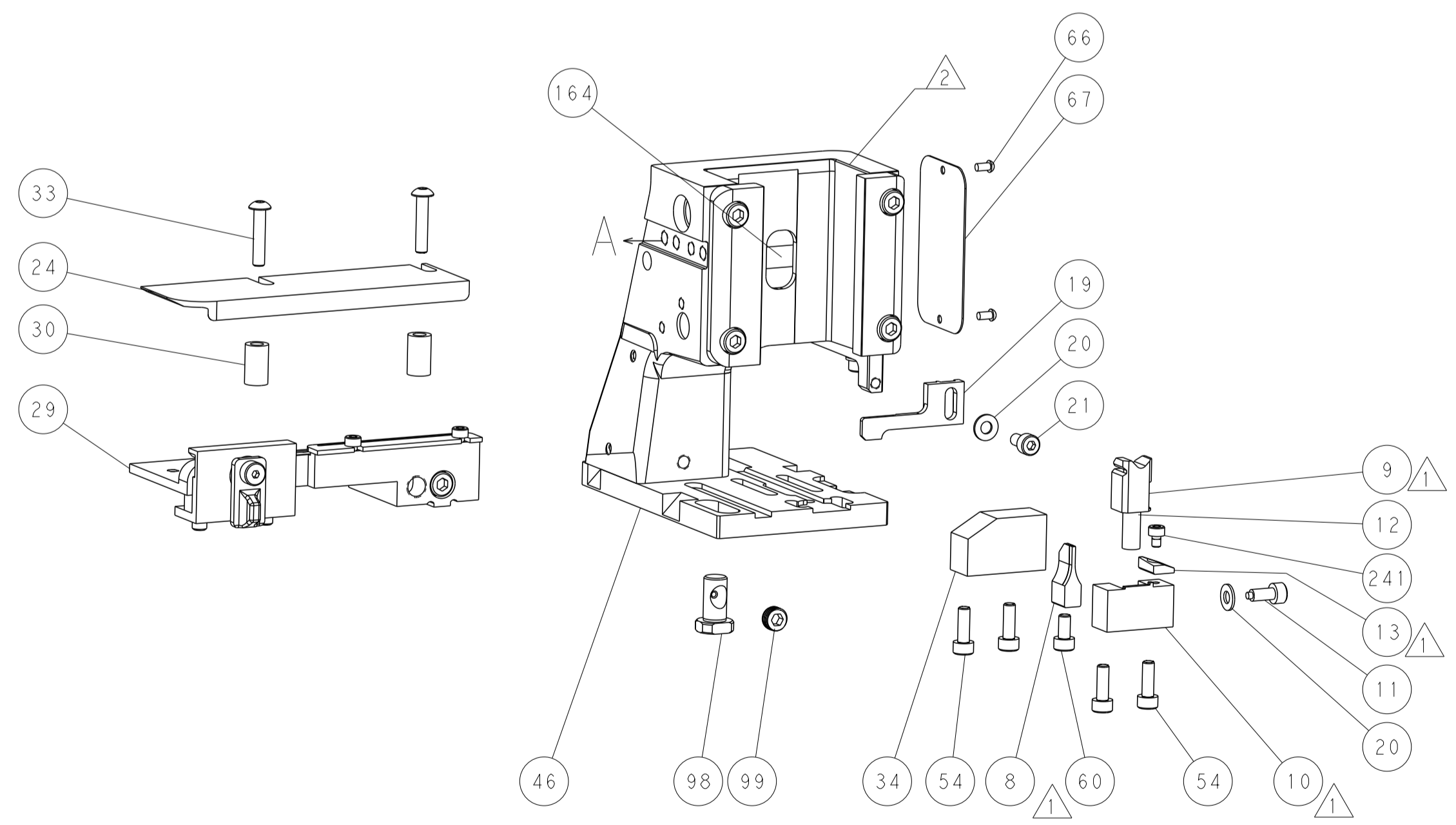
PNEUMATIC



TERMINAL SUPPORT LOCATION

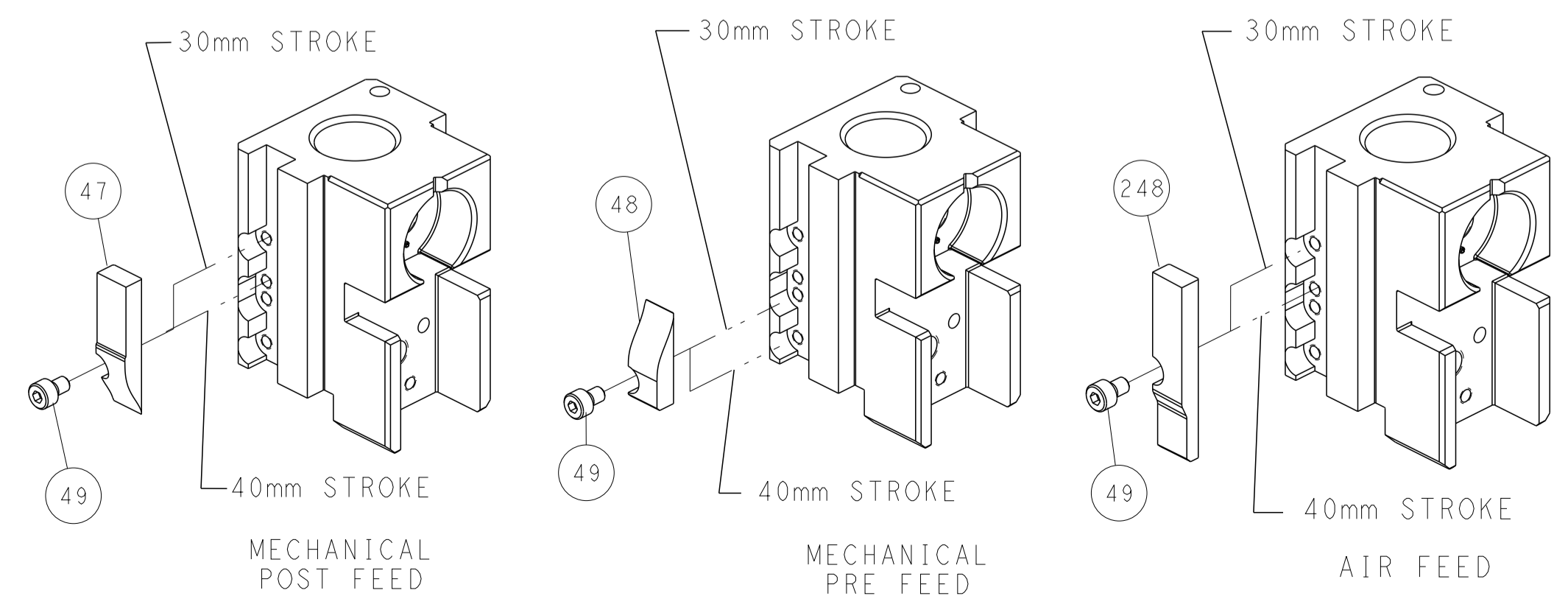


RAM SET-UP



FEED TRACK POSITION GUIDE BY INSULATION BARREL

CAM POSITIONS

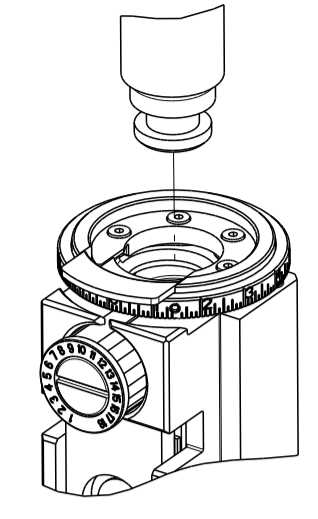


ATLANTIC VERSION
 Shown on sheets 1 of 4 & 2 of 4
 (Pacific version shown on sheets 3 of 4 & 4 of 4)

| | | | |
|---|--|--|-------------------------------|
| <small>THIS DRAWING IS UNPUBLISHED. RELEASED FOR PUBLICATION. ALL RIGHTS RESERVED. © 2000 BY TYCO ELECTRONICS CORPORATION. THIS DRAWING IS THE PROPERTY OF TYCO ELECTRONICS CORPORATION AND IS NOT TO BE REPRODUCED OR TRANSMITTED IN ANY FORM OR BY ANY MEANS, ELECTRONIC OR MECHANICAL, WITHOUT THE WRITTEN PERMISSION OF TYCO ELECTRONICS CORPORATION.</small> | | DWN: C. CHEN 26AUG2013 CHK: U. GUO 26AUG2013 APVD: J. CRUZ 26AUG2013 | |
| DIMENSIONS: mm TOLERANCES UNLESS OTHERWISE SPECIFIED: 0 PLC ± 1 PLC ± 2 PLC ± 3 PLC ± 4 PLC ± ANGLES ± FINISH | NAME: Ocean Side Feed Applicator PRODUCT SPEC: APPLICATION SPEC: SIZE: CAGE CODE: DRAWING NO: A1 00779 ©=2266026 WEIGHT: | RESTRICTED TO: | SCALE: 1:2 SHEET 2 OF 4 REV C |
| MATERIAL: | | Customer Accessible Production Drawing | |

| PART NUMBER | REVISION | DESCRIPTION | FEED TYPE |
|-------------|----------|--------------------------|------------|
| 2-2266026-1 | C | FINE CRIMP HEIGHT ADJUST | MECHANICAL |
| 2-2266026-2 | C | FINE CRIMP HEIGHT ADJUST | PNEUMATIC |
| 7-2266026-7 | A | CRIMP TOOLING KIT | - |

PACIFIC VERSION TERMINATOR
INTERFACE ADAPTER



| APPLICATOR DATA | | |
|--------------------------------------|----------------|------|
| CRIMP | SIZE | TYPE |
| WIRE | 1.40 mm [.055] | F |
| INSUL | 1.40 mm [.055] | F |
| APPLICATOR INSTRUCTIONS 408-35042 | | |

| TERMINAL DATA: SUMITOMO TERMINAL SUMITOMO CRIMP SPECIFICATION | | | |
|---|-------------------|------------------------------|-------------------|
| TERMINAL NAME: TERMINAL | | | |
| WIRE STRIP LENGTH | | INSULATION DIAMETER RANGE | |
| 4.00-4.50 mm [.157-.177 IN] | | Ø1.00-1.50 mm [.039-.060 IN] | |
| TERMINAL APPLICATION SPECIFICATION | NONE | | |
| TERMINALS APPLIED | | | |
| TE TERMINAL | SUMITOMO TERMINAL | TE TERMINAL | SUMITOMO TERMINAL |
| 2113372-1 | 8100-4029 | | |

| TERMINAL DATA: SUMITOMO TERMINAL SUMITOMO CRIMP SPECIFICATION | | | |
|---|-------------------|------------------------------|-------------------|
| TERMINAL NAME: TERMINAL | | | |
| WIRE STRIP LENGTH | | INSULATION DIAMETER RANGE | |
| 4.00-4.50mm [.157-.177 IN] | | Ø1.00-1.50 mm [.039-.060 IN] | |
| TERMINAL APPLICATION SPECIFICATION | NONE | | |
| TERMINALS APPLIED | | | |
| TE TERMINAL | SUMITOMO TERMINAL | TE TERMINAL | SUMITOMO TERMINAL |
| 1832368-2 | 8100-4028 | | |

| WIRE SIZE | CRIMP HEIGHT mm [INCH] | CRIMP HEIGHT REFERENCE SETTING |
|---------------|-------------------------------|--------------------------------|
| AVSS 0.30mm2 | 0.80 +/- 0.05 [.031 +/- .002] | 5.9 |
| CHFUS 0.35mm2 | 0.75 +/- 0.05 [.030 +/- .002] | 6.5 |
| CHFUS 0.22mm2 | 0.70 +/- 0.05 [.028 +/- .002] | 7.0 |

| WIRE SIZE | CRIMP HEIGHT mm [INCH] | CRIMP HEIGHT REFERENCE SETTING |
|---------------|-------------------------------|--------------------------------|
| AVSS 0.30mm2 | 1.00 +/- 0.05 [.039 +/- .002] | 2.8 |
| CHFUS 0.35mm2 | 0.95 +/- 0.05 [.037 +/- .002] | 3.4 |
| CHFUS 0.22mm2 | 0.90 +/- 0.05 [.035 +/- .002] | 3.9 |

- RECOMMENDED SPARE PARTS
 - REFER TO SUPPLIED INSTRUCTION SHEET FOR CLEANING, LUBRICATION AND STORAGE OF APPLICATOR.
 - APPLY PART NUMBER 2-23419-6 LOCTITE TO THREADS OF ITEM 242.
 - CRIMP HEIGHT REFERENCE SETTING WAS THE SETTING USED WHEN THE APPLICATOR WAS QUALIFIED AT THE FACTORY. ADJUSTMENT MAY BE NECESSARY WHEN RUNNING APPLICATOR IN THE FIELD.
5. UNLESS SPECIFIED OTHERWISE TORQUE VALUES SHALL BE USED PER DOCUMENT, 101-35000.

***WARNING**
ON INSTALLATION, SET WIRE DISC TO CRIMP HEIGHT REFERENCE SETTING FOR LARGEST WIRE SIZE. CRIMP HEIGHT REFERENCE SETTINGS GREATER THAN THE VALUE SHOWN MAY CAUSE DAMAGE TO THE CRIMP TOOLING. REFER TO THE INSTRUCTION SHEET FOR PROPER SETUP AND ADJUSTMENTS.

| LOC | DIST | REV | DATE | BY | APPV |
|-----|------|-----|------|----|------|
| - | - | 1 | - | - | - |

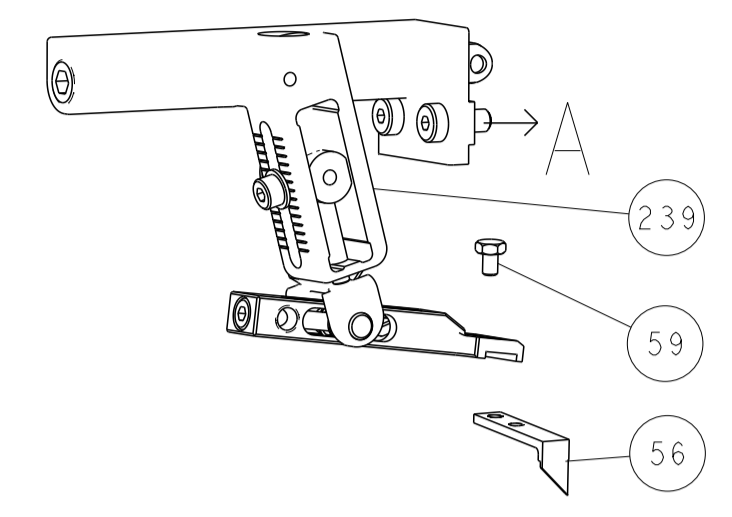
| REV | DATE | BY | APPV | DESCRIPTION | ITEM NO | |
|-----|------|-----|------|-------------|-------------------------------------|-----|
| - | 1 | - | - | 2119640-1 | PUSH ROD, AIR FEED | 250 |
| - | 1 | - | - | 1803259-1 | BUSHING, FLANGED | 249 |
| - | 1 | 1 | - | 2119082-8 | CAM, SNAIL, INSULATION ADJUSTMENT | 244 |
| - | 1 | 1 | - | 2079764-1 | WASHER, WAVE SPRING, CREST-TO-CREST | 243 |
| - | 1 | 1 | - | 2119083-1 | RETAINER, INSULATION DIAL | 242 |
| - | 1 | 1 | - | 7-18023-7 | SCR, SKT HD CAP M3 X 4.0 | 241 |
| - | 2 | - | - | 2119580-1 | MECHANICAL FEED ASSEMBLY | 239 |
| - | 1 | - | - | 2063440-1 | AIR FEED MODULE | 238 |
| - | 2 | - | - | 21045-3 | RING, RETAIN, EXTERN, 3/16 CRESCENT | 172 |
| - | REF | REF | - | 994970-2 | COUNTER, MAGNETIC | 164 |
| - | 1 | - | - | 240638-1 | SPRING, FEED FINGER | 163 |
| - | 1 | - | - | 2119641-2 | FEED CAM, AIR FEED | 151 |
| - | 1 | 1 | - | 2168083-8 | SCR, SKT HD CAP, RoHS, M4 X 16 | 144 |
| - | 4 | 4 | - | 2168083-9 | SCR, SKT HD CAP, RoHS, M4 X 20 | 143 |
| - | - | 1 | - | 2119653-2 | FEED CAM, POST FEED | 142 |
| - | 1 | 1 | - | 1-1803583-0 | APPLICATOR BASIC ASSEMBLY, SF | 141 |
| - | 1 | 1 | - | 1803516-1 | RAM ASSEMBLY, SF PACIFIC | 140 |
| - | 1 | - | - | 3-23627-7 | PIN, RETAIN, GRVD, 3/16 X .854 | 137 |
| - | 1 | - | - | 2119799-1 | HOLDER, FEED FINGER, AF | 136 |
| - | 1 | 1 | - | 2844908-1 | SCREW, LOCKING | 99 |
| - | 1 | 1 | - | 2844907-1 | POST, LOCKING | 98 |
| - | 1 | 1 | - | 455888-4 | SPACER, CRIMPER | 82 |
| - | 1 | 1 | - | 1803607-1 | DOCUMENTATION PACKAGE | 71 |
| - | 1 | 1 | - | 2119791-9 | DEPRESSOR, WIRE | 70 |
| - | 1 | 1 | - | 2119740-1 | TAG, IDENTIFICATION | 67 |
| - | 2 | 2 | - | 2168078-1 | SCREW, DRIVE, RH, RoHS, 2 x .188 | 66 |
| - | 1 | 1 | - | 5-18022-5 | SCR, HEX HD CAP, M4 X 6.0 | 59 |
| - | 1 | 1 | - | 1338685-1 | PAWL, FEED | 56 |
| - | 2 | 2 | - | 2168083-3 | SCR, SKT HD CAP, RoHS, M4 X 12.0 | 53 |
| - | 1 | 1 | - | 5018030-1 | NUT, HEX, REG, RoHS, M3 | 52 |
| - | 1 | 1 | - | 811242-5 | BUMPER, HOLD DOWN | 51 |
| - | 1 | 1 | - | 690753-2 | SPACER, TONKER | 50 |
| - | 1 | 2 | - | 18023-9 | SCR, SKT HD CAP M4 X 6.0 | 49 |
| - | - | 1 | - | 2119652-1 | FEED CAM, PRE FEED | 48 |
| - | 1 | 1 | - | 1803602-1 | SCR, BHSC, RoHS (M8 X 25) | 41 |
| - | 1 | 1 | - | 1752356-3 | SUPPORT, TERMINAL | 34 |
| - | 2 | 2 | - | 2079383-5 | SCR, BHSC, RoHS (M4 X 20) | 33 |
| - | 2 | 2 | - | 2-2844962-4 | SPACER, CYLINDRICAL, STRIP GUIDE | 30 |
| - | 1 | 1 | - | 2844992-1 | ASSEMBLY, STRIP GUIDE | 29 |
| - | 1 | 1 | - | 1320928-2 | STRIP GUIDE | 24 |
| - | 1 | 1 | - | 2168083-2 | SCR, SKT HD CAP, RoHS, M4 X 8.0 | 21 |
| - | 2 | 2 | - | 1-18028-2 | WASHER, FLAT, REG M4 | 20 |
| - | 1 | 1 | - | 2119533-1 | STRIPPER, SIDE FEED | 19 |
| - | 1 | 1 | - | 2119806-1 | INSERT, SHEAR | 13 |
| - | 1 | 1 | - | 3-22280-3 | SPRING, COMPRESSION | 12 |
| - | 1 | 1 | - | 1-356885-4 | STOP, SHEAR | 11 |
| - | 1 | 1 | - | 2119805-1 | SHEAR HOLDER, FRONT | 10 |
| - | 1 | 1 | - | 1803095-6 | FLOATING SHEAR, FRONT | 9 |
| - | 1 | 1 | 1 | 4-1633932-0 | ANVIL, COMBINATION | 8 |
| - | 1 | 1 | - | 240641-9 | SPACER | 7 |
| - | - | - | - | - | - | 6 |
| - | 1 | 1 | - | 2119757-5 | DEPRESSOR, SHEAR | 5 |
| - | 1 | 1 | - | 238011-7 | BLOCK, CRIMPER SPACER | 4 |
| - | 1 | 1 | 1 | 1-1633961-2 | CRIMPER, INSULATION F PREMIUM | 3 |
| - | 1 | 1 | - | 455888-4 | SPACER, CRIMPER | 2 |
| - | 1 | 1 | 1 | 1-456402-8 | CRIMPER, WIRE PREMIUM | 1 |

PACIFIC VERSION
Shown on sheets 3 of 4 & 4 of 4
(Atlantic version shown on sheets 1 of 4 & 2 of 4)

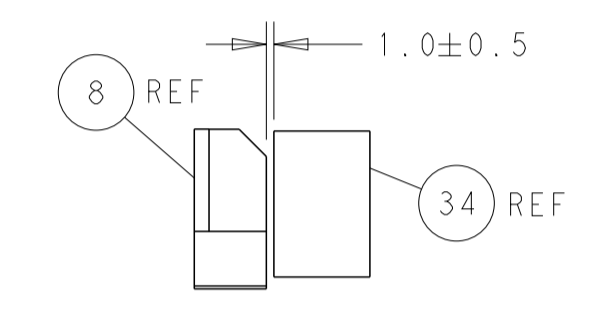
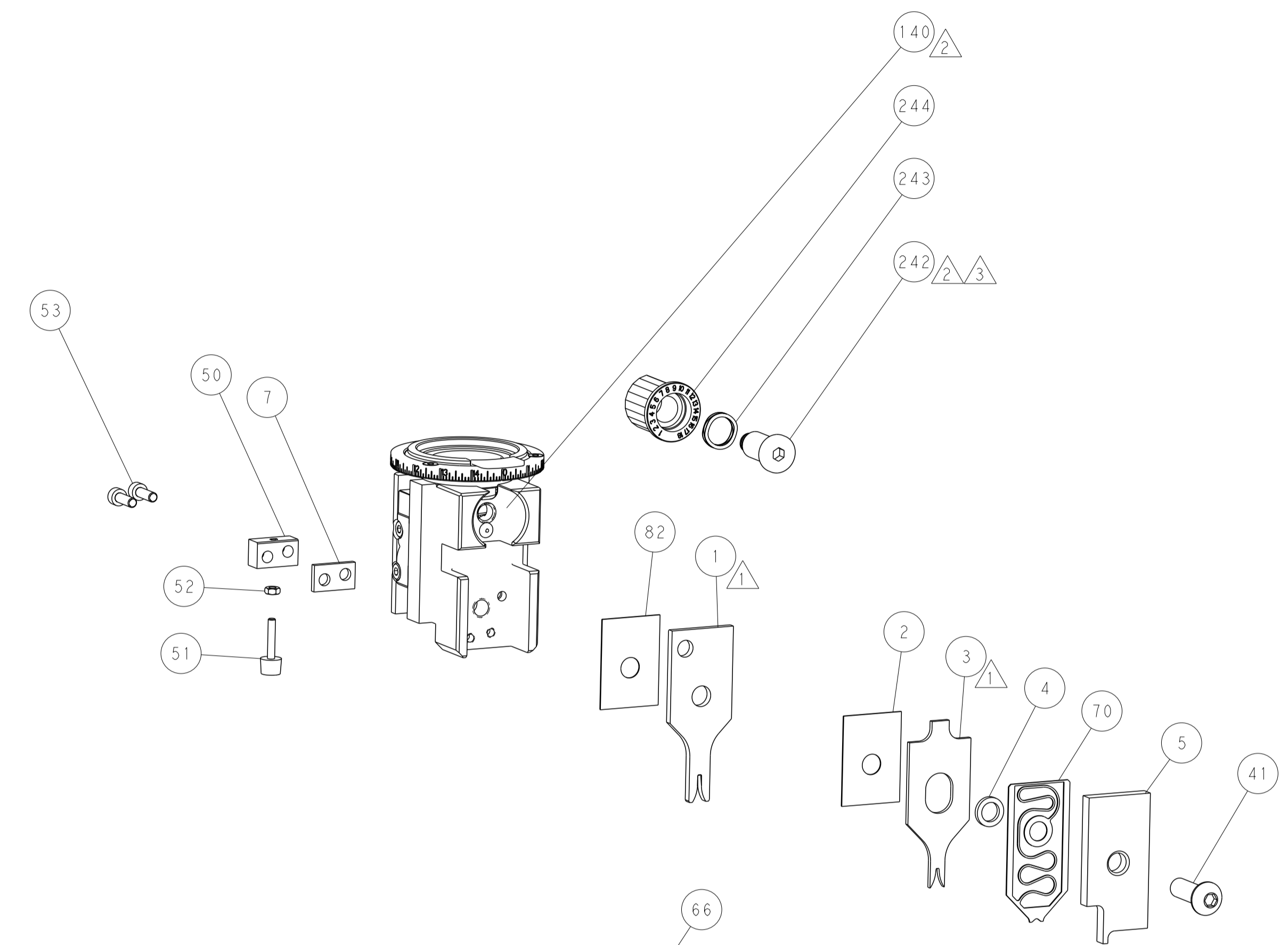
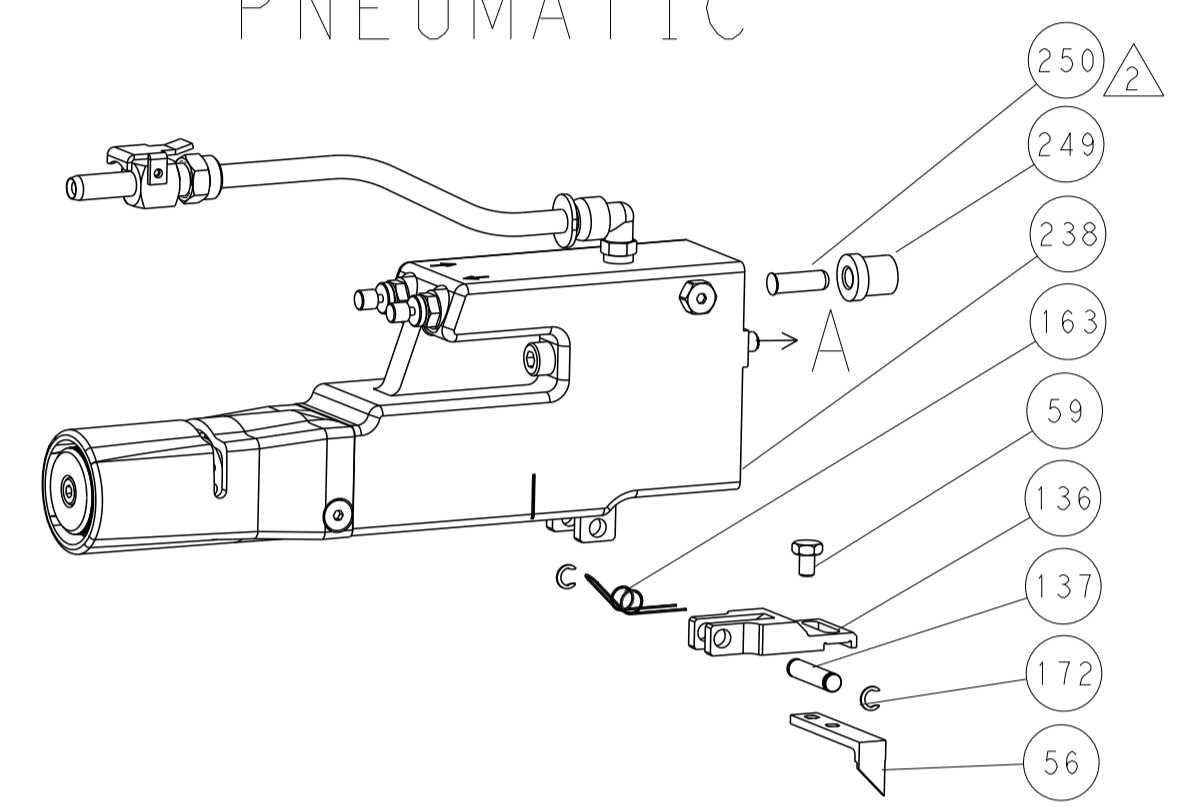
| | | | |
|--|--|---|--|
| <small>THIS DRAWING IS UNPUBLISHED. IT IS THE PROPERTY OF TYCOO ELECTRONICS CORPORATION. ALL RIGHTS ARE RESERVED. IT IS TO BE USED ONLY FOR THE PURPOSES SPECIFIED IN THE DRAWING. IT IS TO BE KEPT IN CONFIDENTIALITY AND NOT TO BE REPRODUCED OR TRANSMITTED IN ANY FORM OR BY ANY MEANS, ELECTRONIC OR MECHANICAL, INCLUDING PHOTOCOPYING, RECORDING, OR BY ANY INFORMATION STORAGE AND RETRIEVAL SYSTEM. PERMISSION TO REPRODUCE THIS DRAWING IN WHOLE OR IN PART IS GRANTED BY TYCOO ELECTRONICS CORPORATION TO THE EXTENT THAT THE REPRODUCTION DOES NOT CONFLICT WITH THE INTERESTS OF TYCOO ELECTRONICS CORPORATION.</small> | | DWN C. CHEN 26AUG2013 CHK U. GUO 26AUG2013 APPV J. CRUZ 26AUG2013 | |
| DIMENSIONS: mm | | TOLERANCES UNLESS OTHERWISE SPECIFIED: 0 PLC ± 1 PLC ± 2 PLC ± 3 PLC ± 4 PLC ± ANGLES ± FINISH ± | NAME Ocean Side Feed Applicator PRODUCT SPEC - APPLICATION SPEC - SIZE CAGE CODE DRAWING NO A1 00779 C=2266026 RESTRICTED TO - |
| MATERIAL - - | | WEIGHT - - | Customer Accessible Production Drawing SCALE 1:2 SHEET 3 OF 4 REV C |

| LOC | DIST | REV | DESCRIPTION | DATE | DWN | APVD |
|-----|------|-----|-------------|------|-----|------|
| | | - | SEE SHEET 1 | | | |

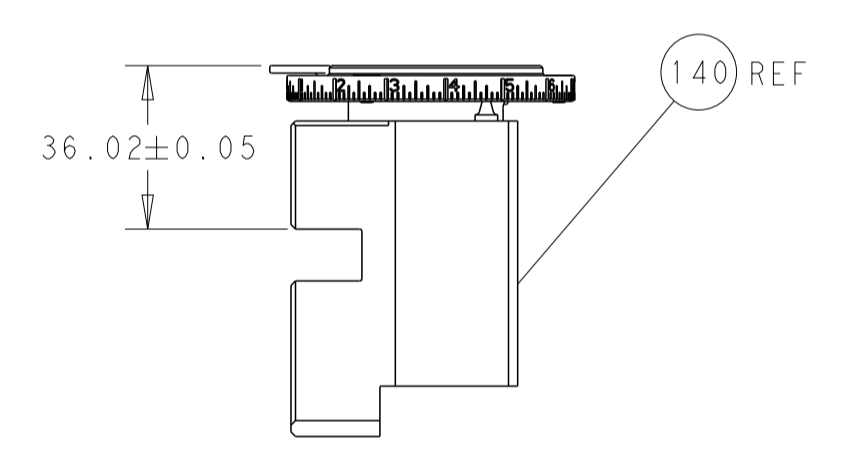
FEED TYPE MECHANICAL



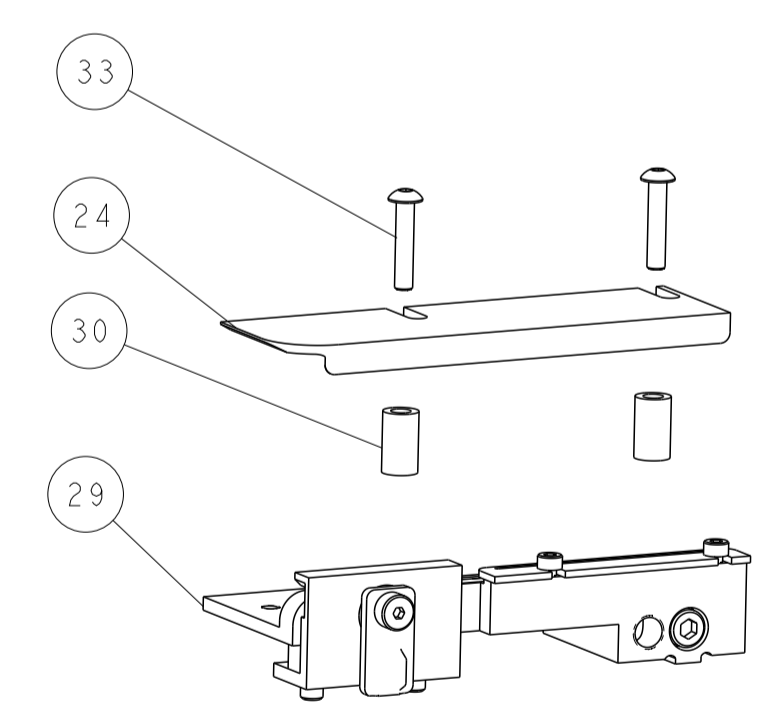
PNEUMATIC



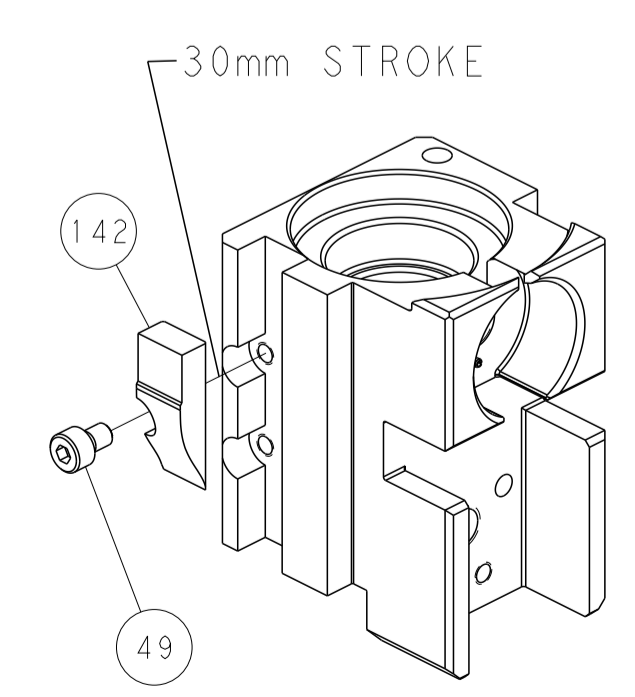
TERMINAL SUPPORT LOCATION



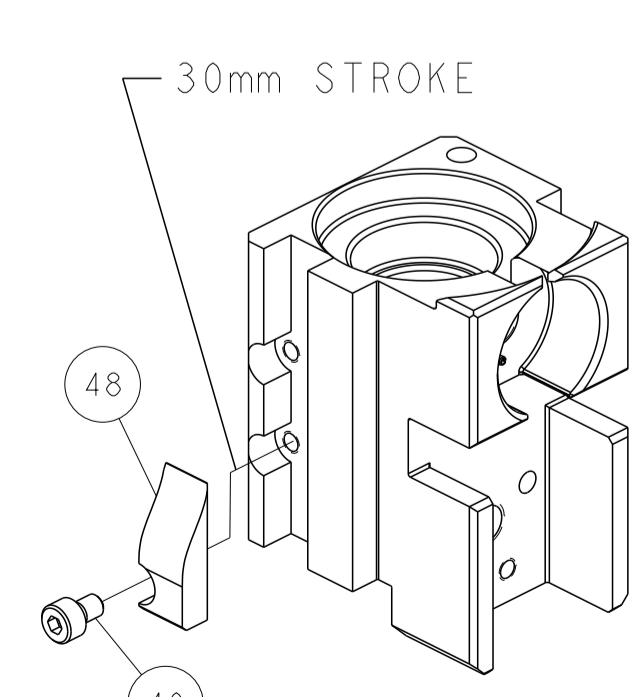
RAM SET-UP



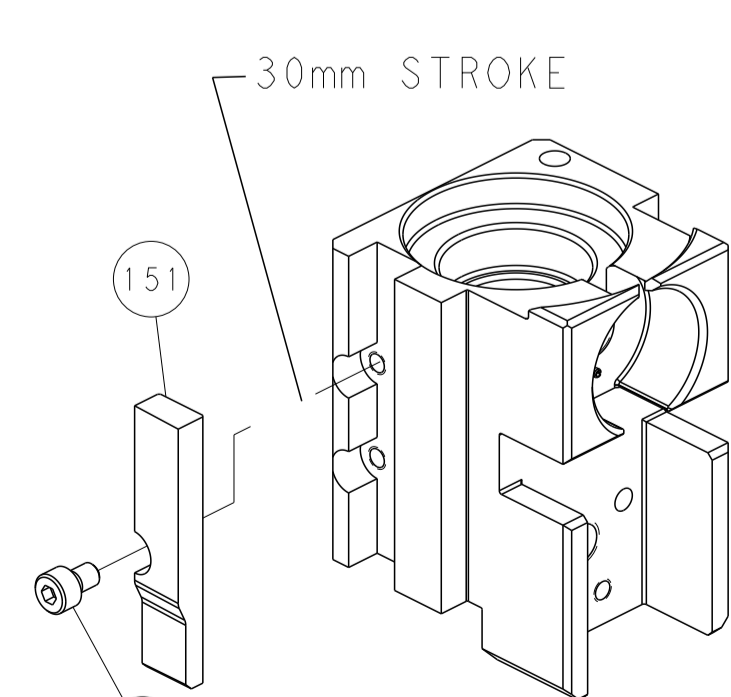
CAM POSITIONS



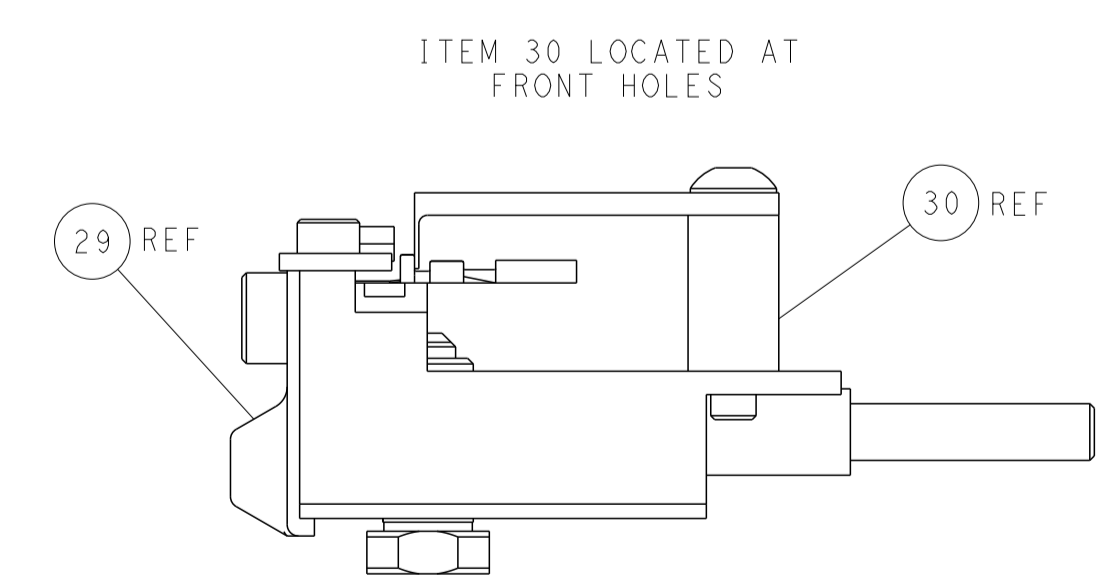
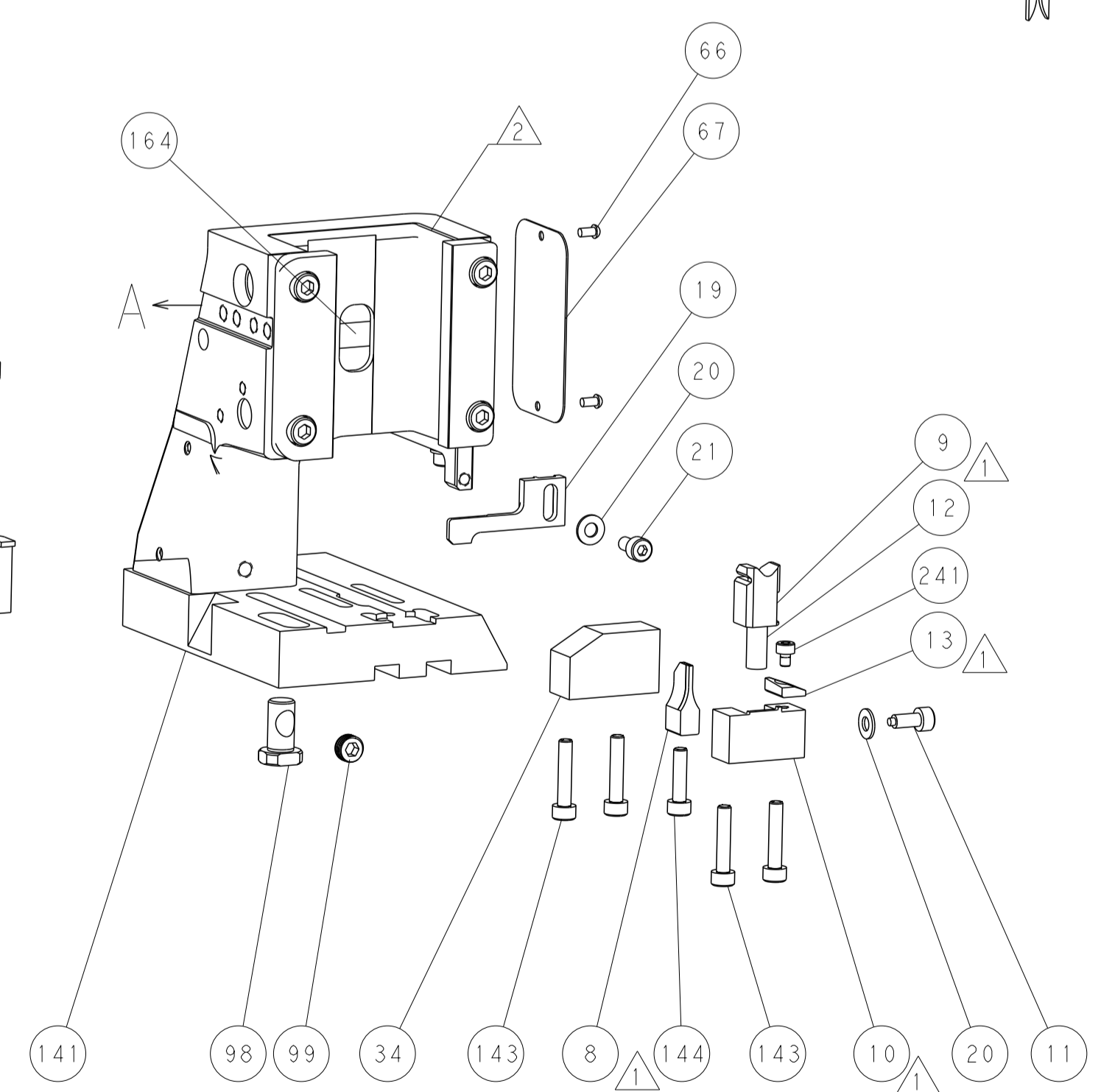
MECHANICAL
POST FEED



MECHANICAL
PRE FEED



AIR FEED



FEED TRACK POSITION
GUIDE BY INSULATION BARREL

PACIFIC VERSION
 Shown on sheets 3 of 4 & 4 of 4
 (Atlantic version shown on sheets 1 of 4 & 2 of 4)

| | | | |
|---|--|--|--|
| <small>THIS DRAWING IS UNPUBLISHED. RELEASED FOR PUBLICATION. IT IS THE PROPERTY OF TYCO ELECTRONICS CORPORATION. IT IS TO BE USED ONLY FOR THE PURPOSES AND IN THE QUANTITIES SPECIFIED IN THE ORDER. IT IS TO BE RETURNED TO TYCO ELECTRONICS CORPORATION UPON COMPLETION OF THE PROJECT.</small> | | DWN: C. CHEN 26AUG2013 CHK: U. GUO 26AUG2013 APVD: J. CRUZ 26AUG2013 | |
| DIMENSIONS: mm TOLERANCES UNLESS OTHERWISE SPECIFIED: 0 PLC ± 1 PLC ± 2 PLC ± 3 PLC ± 4 PLC ± ANGLES ± FINISH ± | | NAME: Ocean Side Feed Applicator PRODUCT SPEC: APPLICATION SPEC: SIZE: CAGE CODE: DRAWING NO: A1 00779 ©=2266026 WEIGHT: | RESTRICTED TO: |
| MATERIAL: | | SCALE: 1:2 SHEET: 4 of 4 REV: C | Customer Accessible Production Drawing |