

NOTES: UNLESS OTHERWISE SPECIFIED.

1. MATERIAL & FINISH:

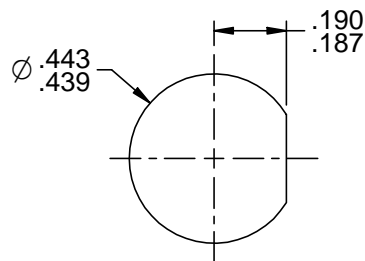
- 1.1 BODY & PANEL NUT: NICKEL PLATED BRASS
- 1.2 CENTER CONTACT AND INTERMEDIATE CONTACT: GOLD PLATED BERYLLIUM COPPER
- 1.3 DIELECTRIC: PTFE (TEFLON)
- 1.4 GASKET: SILICON RUBBER
- 1.5 GROUND LUG & LOCKWASHER: NICKEL PLATED COPPER ALLOY

2. ELECTRICAL

- 2.1 FREQUENCY (MAX): 500 MHZ
- 2.2 IMPEDENCE: NON-CONSTANT

3. PANEL NUT TORQUE (MAX): 35 INCH POUNDS

4. PANEL THICKNESS (MAX): .250



**RECOMMENDED
PANEL CUTOUT**

		Trompeter	
	RoHS <input checked="" type="checkbox"/> 2002/95/EC	Title: TRS BULKHEAD SOLDER POT JACK	
<small>THIS PRODUCT IS THE PROPERTY OF CINCH CONNECTIVITY AND IS NOT TO BE REPRODUCED OR TRANSMITTED IN ANY FORM OR BY ANY MEANS, ELECTRONIC OR MECHANICAL, INCLUDING PHOTOCOPYING, RECORDING, OR BY ANY INFORMATION STORAGE AND RETRIEVAL SYSTEM.</small>	<small>UNLESS OTHERWISE SPECIFIED</small> UNITS: INCH .XX ±.02 .XXX ±.005 ANGLES ±2°	Model No. BJ150FL	Date: 5/9/2014
<small>INTERPRET DRAWINGS IN ACCORDANCE WITH ASSM 912 & 913/14</small>	Size A	DO NOT SCALE DRAWING	Sheet 1 of 1