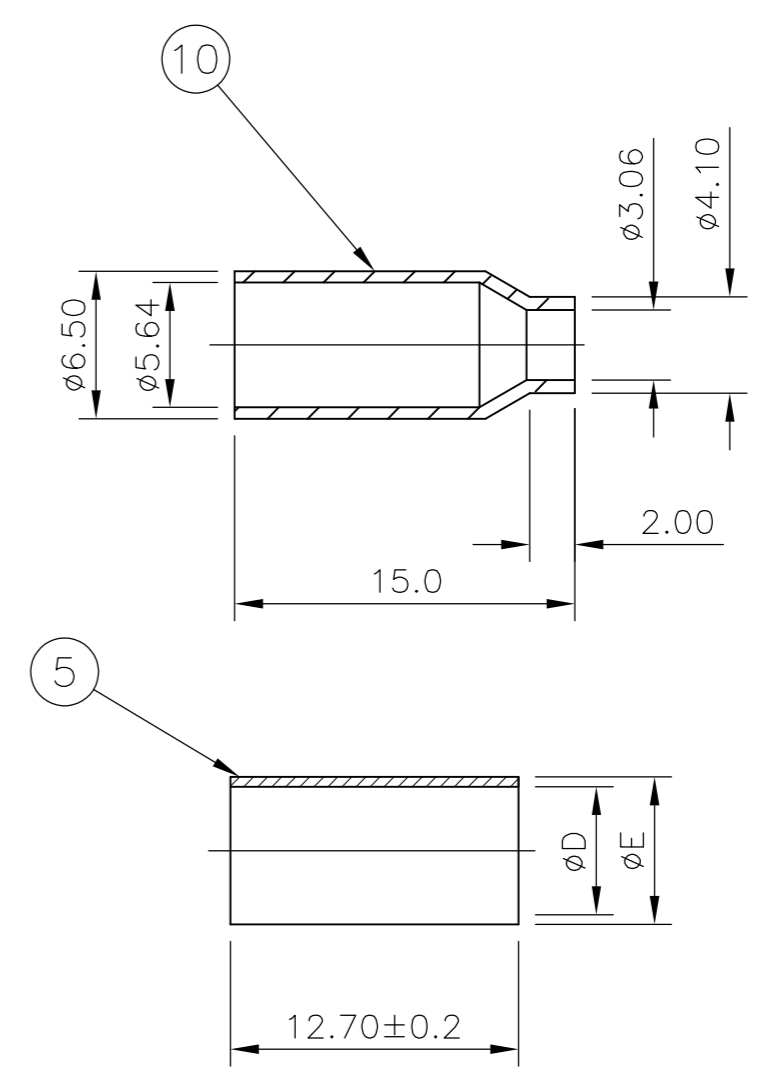
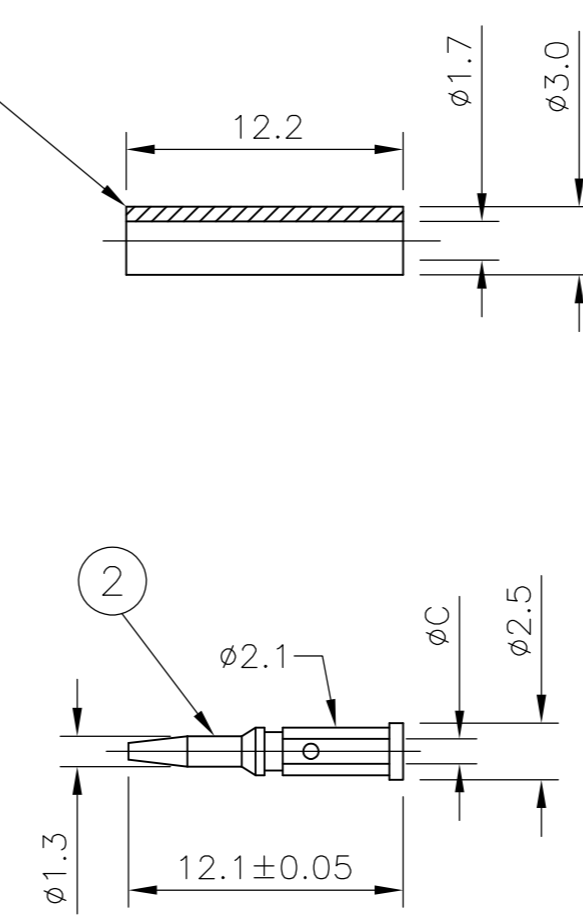
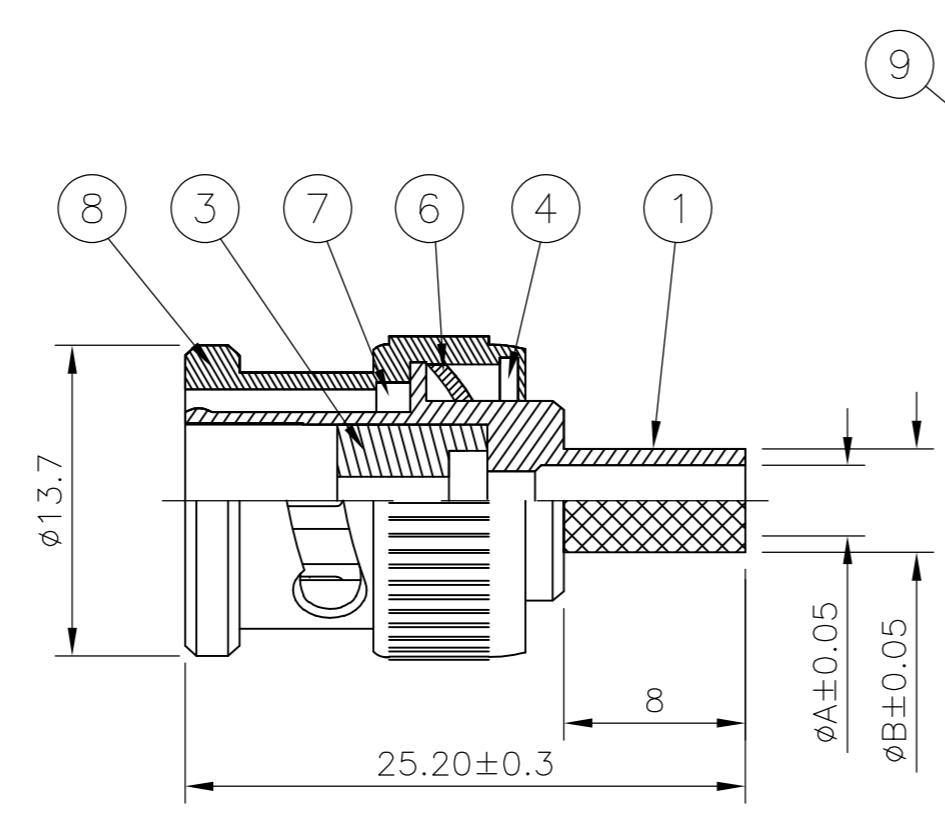
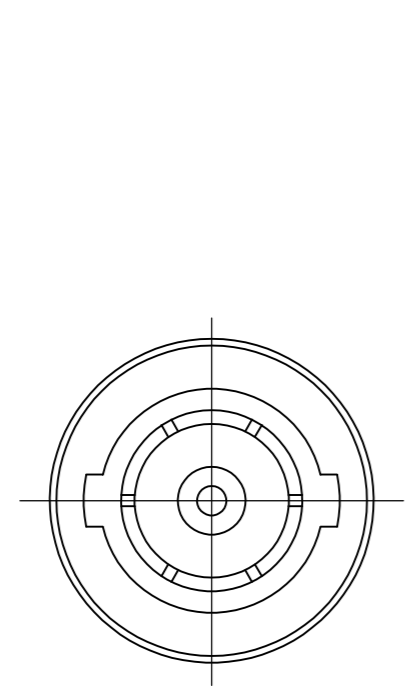


THIS DRAWING IS UNPUBLISHED. RELEASED FOR PUBLICATION JUNE ,2004.  
 © COPYRIGHT 2004 By - ALL RIGHTS RESERVED.

LOC	DIST	REVISIONS		
		P	LTR	DESCRIPTION
E	B	E1	REVISED PER ECO-15-009168	24JUN2015 RZ RS

- NOTES
- 1 SINGLE PACK IN ACCORDANCE WITH AMP SPEC 107-3275
  - 2 100 BODIES IN A HEAT SEALED BAG; 100 CONTACTS IN SEPARATE HEAT SEALED BAG; 100 CRIMP SLEEVES IN A SEPARATE HEAT SEALED BAG. ALL THREE BAGS WOULD BE PLACED IN A LABELED UNIT CONTAINER TO MAKE A PACKAGE OF 100 COMPLETE KITS.
  - 3 Au PLATING OVER Ni PLATING OVER Cu PLATING
  - 4 Ni PLATING OVER Cu PLATING
  - 5 HAND TOOL: 9-1478240-0
  - 6 DIE SET: SEE TABLE
  - 7 FOR TECHNICAL DATA REFER TO YOUR LOCAL TE CONNECTIVITY SALES OFFICE
  - 8 ALL DIMENSIONS ARE NOMINAL FOR REFERENCE ONLY UNLESS OTHERWISE STATED

QTY	DESCRIPTION	PART NO.						
-	9-1478242-0	RG179B/U, 187A/U, URM111	5-1634502-5					
-	9-1478242-0	RG179B/U, 187A/U, URM111	5-1634502-4					
7.5	6.6	0.7	5.45	3.8	9-1478242-0	RG59B/U, 62A/U, 140/U, 210/U, URM90, KX 6A, KX 25, KX 52, KX 53	5-1634502-3	
7.5	6.6	0.7	5.45	3.8	9-1478242-0	RG59B/U, 62A/U, 140/U, 210/U, URM90, KX 6A, KX 25, KX 52, KX 53	5-1634502-2	
6.4	5.4	0.7	4.5	3.1	9-1478242-0	E4205, NEK23795, SDTV-A-LFH, 36-516/519, IMAGE360, RA7000	5-1634502-1	
6.4	5.4	0.7	4.5	3.1	9-1478242-0	E4205, NEK23795, SDTV-A-LFH, 36-516/519, IMAGE360, RA7000	5-1634502-0	
	E	D	C	B	A	DIE SET	CABLE GROUPS	PART NO.



QTY	DESCRIPTION	MATERIAL	QUANTITY PER ASSY	PARTS LIST
1	CRIMP SLEEVE	BRASS	1	10
1	PUSHER SLEEVE	NYLON	1	9
1	BARREL	ZINC ALLOY	1	8
1	GASKET	SILCON RUBBER	1	7
1	SPRING	SPRING STEEL	1	6
1	CRIMP SLEEVE	BRASS	1	5
1	WASHER	IRON	1	4
1	INSULATOR	POLYMETHYLPENTENE	1	3
1	CONTACT	BRASS	1	2
1	BODY	ZINC ALLOY	1	1
5	MATERIAL		5	

THIS DRAWING IS A CONTROLLED DOCUMENT.

DWN: RITA ZUO 19 Feb 09  
 CHK: ANSON MA 19 Feb 09  
 APVD: BOB ZHAO 19 Feb 09

TOLERANCES UNLESS OTHERWISE SPECIFIED:  
 0 PLC ± 0.5  
 1 PLC ± 0.3  
 2 PLC ± 0.2  
 3 PLC ± -  
 4 PLC ± -  
 ANGLES ± 5°

FINISH: SEE TABLE

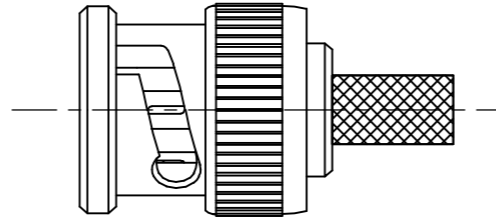
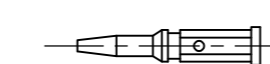
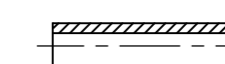
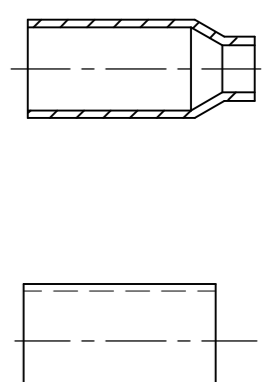
TE Connectivity  
**BNC STRAIGHT PLUG HEX CRIMP**  
 75 OHM

SIZE: A2 CAGE CODE: 00779 DRAWING NO: C=1634502 RESTRICTED TO: -  
 CUSTOMER DRAWING SCALE: NTS SHEET: 1 of 2 REV: E1

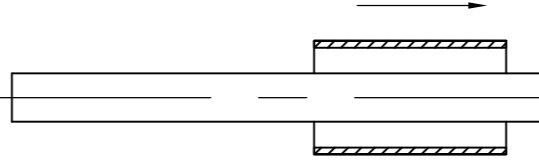
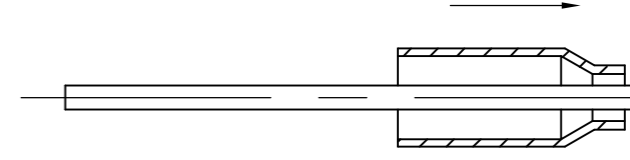
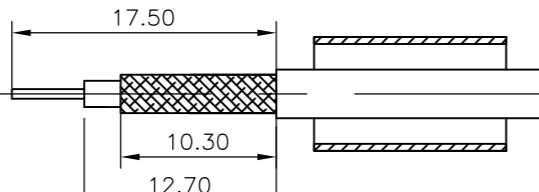
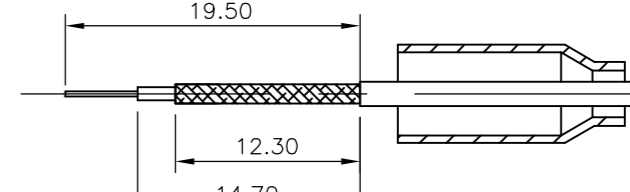
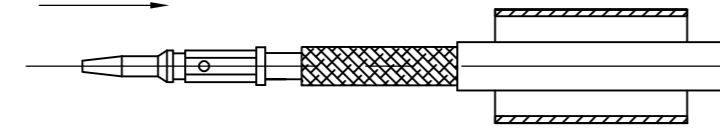
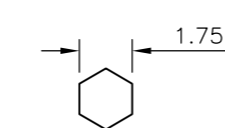
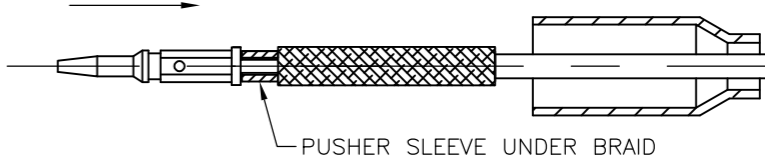
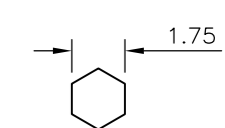
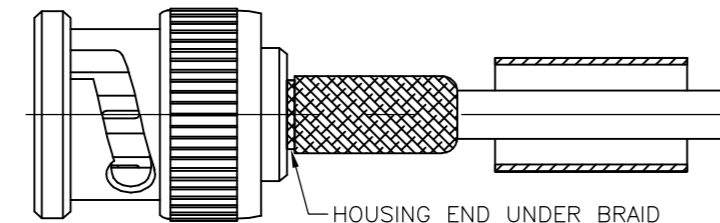
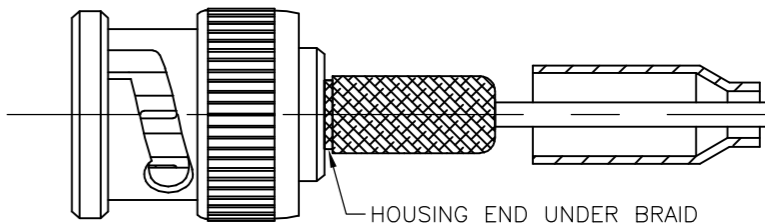
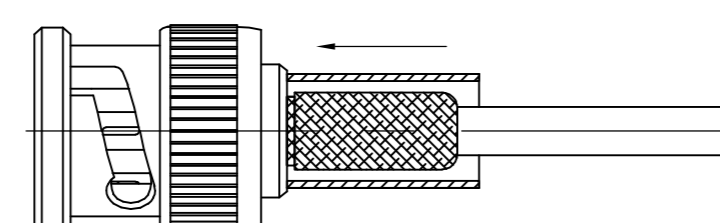
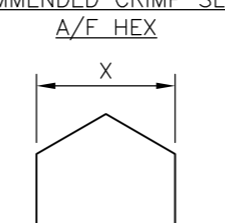
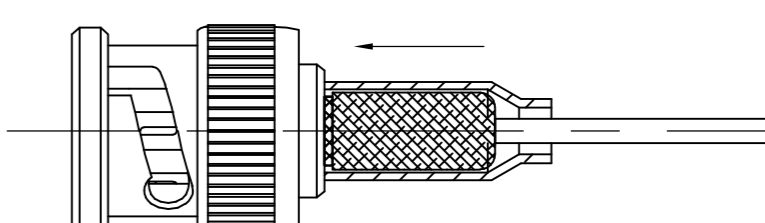
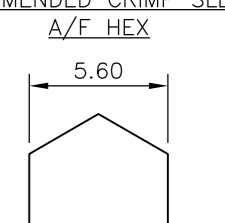
THIS DRAWING IS UNPUBLISHED. RELEASED FOR PUBLICATION JUNE ,2004.  
 © COPYRIGHT 2004 By - ALL RIGHTS RESERVED.

LOC	DIST	REVISIONS					
E	B	P	LTR	DESCRIPTION	DATE	DWN	APVD
		-		SEE SHEET 1	-	-	-

COMPONENTS

MAIN BODY (ITEM 1,3,4,6,7 & 8)	CENTRE CONTACT (ITEM 2)	PUSHER SLEEVE (ITEM 9)	CRIMP FERRULES (ITEM 5 & 10)
			

ASSEMBLY INSTRUCTION

CABLES: RG59B/U, 62A/U, 140/U, 210/U, URM90, KX 6A, KX 25, KX 52, KX 53, RG58C/U, 141A/U, URM43, 76, BELDEN 9907, KX 15	CABLES: RG179B/U, 187A/U, URM111
<p><b>STEP 1</b></p> <p>1. SLIDE METAL CRIMP FERRULE OVER CABLE</p> 	<p><b>STEP 1</b></p> <p>1. SLIDE METAL CRIMP FERRULE OVER CABLE</p> 
<p><b>STEP 2</b></p> <p>1. STRIP CABLE TO DIMENSIONS AS SHOWN</p> 	<p><b>STEP 2</b></p> <p>1. STRIP CABLE TO DIMENSIONS AS SHOWN</p> 
<p><b>STEP 3</b></p> <p>1. FIT CONTACT OVER CENTRE CONDUCTOR TO BUTT AGAINST DIELECTRIC.            2. CRIMP USING TOOL AS NOTES ON PAGE 1.</p>  <p>RECOMMENDED CENTRE CONTACT A/F HEX</p> 	<p><b>STEP 3</b></p> <p>1. SLIDE ITEM 10 PUSHER SLEEVE OVER DIELECTRIC BEFORE FITTING THE CONTACT.            2. FIT CONTACT OVER CENTRE CONDUCTOR TO BUTT AGAINST DIELECTRIC.            3. CRIMP USING TOOL AS NOTES ON PAGE 1.</p>  <p>RECOMMENDED CENTRE CONTACT A/F HEX</p> 
<p><b>STEP 4</b></p> <p>1. PRESS SUB-ASSEMBLY INTO BODY, UNTIL CONTACT IS FULLY LOCATED BY AN AUDIBLE CLICK.            2. ENSURE THAT KNURLED HOUSING INSERTS BETWEEN THE DIELECTRIC AND CABLE BRAID.</p> 	<p><b>STEP 4</b></p> <p>1. PRESS SUB-ASSEMBLY INTO BODY, UNTIL CONTACT IS FULLY LOCATED BY AN AUDIBLE CLICK.            2. ENSURE THAT KNURLED HOUSING INSERTS BETWEEN THE PUSHER SLEEVE AND CABLE BRAID.</p> 
<p><b>STEP 5</b></p> <p>1. SLIDE CRIMP FERRULE ALONG THE CABLE UNTIL IT BUTTS AGAINST THE HOUSING BODY.            2. CRIMP USING TOOL AS NOTED ON PAGE 1.            3. CRIMP DIMENSION X IS:-            RG59B (SEE PAGE 1 FOR FULL CABLE LIST) = 6.50            RG58C/U (SEE PAGE 1 FOR FULL CABLE LIST) = 5.60</p>  <p>RECOMMENDED CRIMP SLEEVE A/F HEX</p> 	<p><b>STEP 5</b></p> <p>1. SLIDE CRIMP FERRULE ALONG THE CABLE UNTIL IT BUTTS AGAINST THE BODY HOUSING.            2. CRIMP USING TOOL AS NOTED ON PAGE 1.            3. CRIMP DIMENSION AS SHOWN.</p>  <p>RECOMMENDED CRIMP SLEEVE A/F HEX</p> 

THIS DRAWING IS A CONTROLLED DOCUMENT.		DWN RITA ZUO 19 Feb 09		
DIMENSIONS: MM		CHK ANSON MA 19 Feb 09		
		APVD BOB ZHAO 19 Feb 09	NAME	
TOLERANCES UNLESS OTHERWISE SPECIFIED		PRODUCT SPEC	BNC STRAIGHT PLUG HEX CRIMP	
0 PLC ±		108-112000	75 OHM	
1 PLC ±		APPLICATION SPEC	-	
2 PLC ±		SHEET 2	SIZE	CAGE CODE
3 PLC ±		WEIGHT	A2	00779
4 PLC ±		CUSTOMER DRAWING	DRAWING NO	RESTRICTED TO
ANGLES ±		SCALE	NTS	SHEET 2 of 2
FINISH		REV	E1	
SEE TABLE				

1634502

A