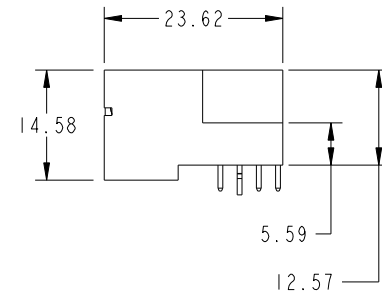
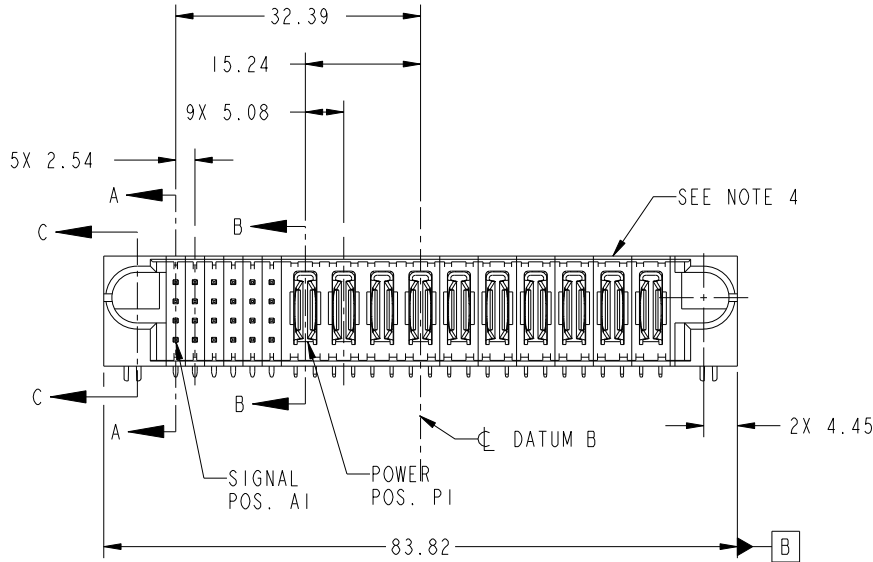
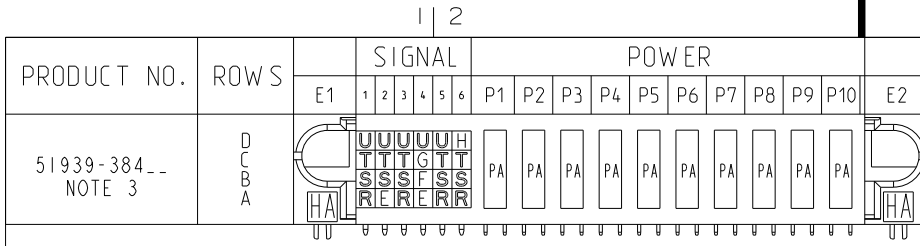


Tous droits strictement réservés. Reproduction ou communication a des tiers interdite sous quelque forme que ce soit sans autorisation écrite du propriétaire. Propriété de c.FCI. Droits de reproduction FCI.

All rights strictly reserved. Reproduction or issue to third parties in any form whatever is not permitted without written authority from the proprietor. Property of FCI. Copyright FCI.



CODE	DIM "M" MATING LENGTH	CONTACT TYPE
PA	[N/A]	POWER
HA	[N/A]	HOLD-DOWN
R	[6.86]	SIGNAL
S	[6.86]	SIGNAL
T	[6.86]	SIGNAL
U	[6.86]	SIGNAL
G	[5.59]	SIGNAL
E	[5.59]	SIGNAL
F	[5.59]	SIGNAL
H	[5.59]	SIGNAL

mat'l code				SEE NOTE		tolerances unless otherwise specified		CUSTOMER		 www.fciconnect.com	
ltr	ecn no.	dr	date	linear	0.X ±0.5		COPY		title		
A	DG08-0286	WD	10/15/08		0.XX ±0.25		projection		24S + 10P		
					0.XXX ±0.1				RIGHT ANGLE SOLDER HEADER		
				angles	0° ±2°				product family		
				dr	Warren Du	10/10/08	MM		PwrBlade		code
				enrg	Warren Du	10/10/08	1:1		size	dwg no	213
				chr	Gary Hsieh	10/10/08			A	51939-384	sheet
				appd	Joseph Hsia	10/10/08			1 of 4		
sheet index	revision sheet	A	A	A	A	A					
		1	2	3	4						

A

B

A

B

1 | 2

3

4

Pro/E

PDM: Rev: A

STAT: Released

Printed: Dec 20, 2010

cage code 28506

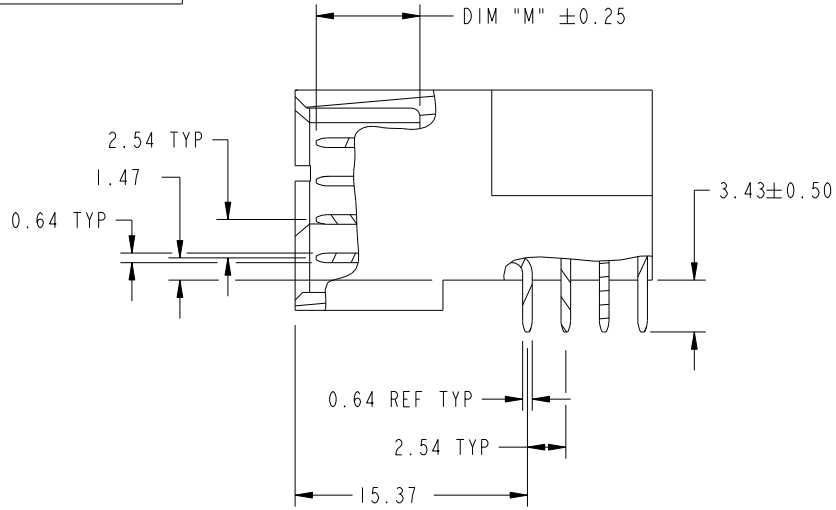
Tous droits strictement reserves. Reproduction ou communication a des tiers interdite sous quelque forme que ce soit sans autorisation ecrite du proprietaire. Propriete de c.FCI. Droits de reproduction FCI.

All rights strictly reserved. Reproduction or issue to third parties in any form whatever is not permitted without written authority from the proprietor. Property of FCI. Copyright FCI.

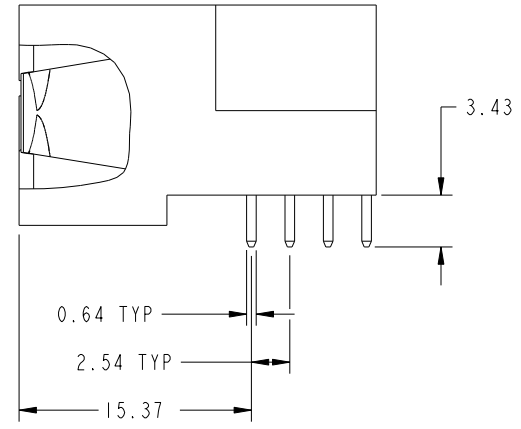


PRODUCT NUMBER

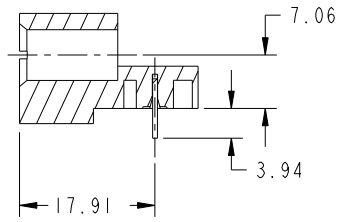
51939-384__
NOTE: 3



BROKEN-OUT SECTION A-A
SCALE 2:1



BROKEN-OUT SECTION B-B
SCALE 2:1



SECTION C-C

mat'l code		SEE NOTE		tolerances unless otherwise specified		CUSTOMER		 www.fciconnect.com	
ltr	ecn no.	dr	date	linear	0.X ±0.5	COPY		title	
A					0.XX ±0.25	projection		24S + 10P	
				angles	0.XXX ±0.1			RIGHT ANGLE SOLDER HEADER	
					0° ±2°			product family	
				dr	Warren Du 10/10/08	MM		PwrBlade	
				enrg	Warren Du 10/10/08			code	
				chr	Gary Hsieh 10/10/08	1:1		213	
				appd	Joseph Hsia 10/10/08	A		sheet	
sheet index		revision sheet				51939-384		2 of 4	

cage code 28506

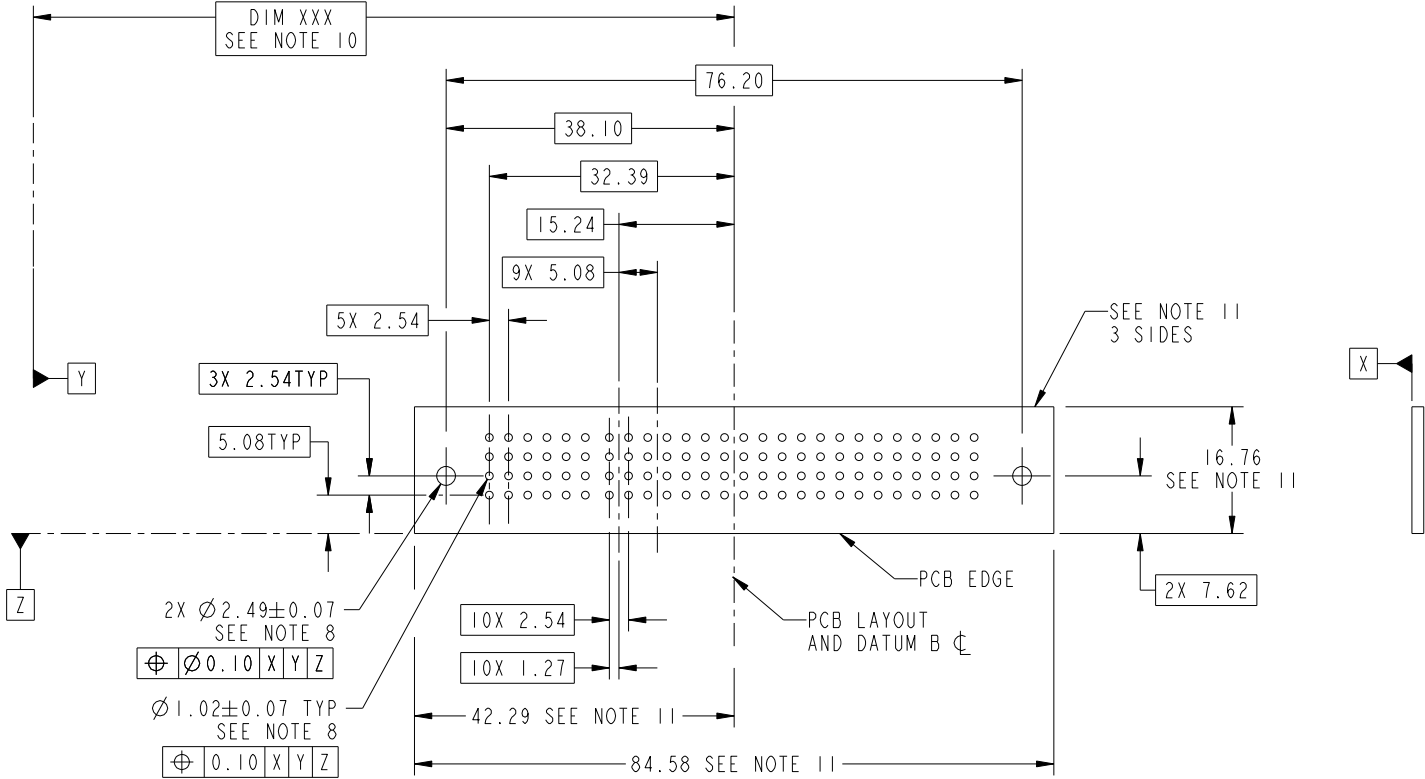
Tous droits strictement réservés. Reproduction ou communication a des tiers interdite sous quelque forme que ce soit sans autorisation écrite du propriétaire. Propriété de c.FCI. Droits de reproduction FCI.

All rights strictly reserved. Reproduction or issue to third parties in any form whatever is not permitted without written authority from the proprietor. Property of FCI. Copyright FCI.



PRODUCT NUMBER

51939-384__
NOTE: 3



RECOMMENDED PCB LAYOUT

mat'l code		SEE NOTE		tolerances unless otherwise specified		CUSTOMER		 www.fciconnect.com	
ltr	ecn no.	dr	date	linear	0.X ±0.5	COPY		title	
A				linear	0.XX ±0.25	projection		24S + 10P	
				angles	0.XXX ±0.1			RIGHT ANGLE SOLDER HEADER	
				dr	0° ±2°			product family	
				enr	Warren Du 10/10/08	MM		PwrBlade	
				chr	Warren Du 10/10/08			code	
				chr	Gary Hsieh 10/10/08	1:1		213	
				appd	Joseph Hsia 10/10/08	A		51939-384	
sheet index	revision sheet							sheet 3 of 4	

cage code 2856

Pro/E

PDM: Rev: A

STATUS: Released

Printed: Dec 20, 2010

Tous droits strictement reserves. Reproduction ou communication a des tiers interdite sous quelque forme que ce soit sans autorisation écrite du propriétaire. Propriete de c.FCI. Droits de reproduction FCI.



All rights strictly reserved. Reproduction or issue to third parties in any form whatever is not permitted without written authority from the proprietor. Property of FCI. Copyright FCI.

1 | 2

3

4

PRODUCT NUMBER


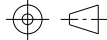

51939-384__
NOTE: 3

NOTES:

1. DIMENSIONS AND TOLERANCES ARE IN ACCORDANCE WITH ASME Y14.5M, 1994 UNLESS OTHERWISE SPECIFIED.

CONNECTOR NOTES:

- 2. HOUSING MATERIAL: UL 94 V-0 GLASS FILLED HIGH-TEMP THERMOPLASTIC
POWER CONTACT MATERIAL: COPPER ALLOY
SIGNAL PIN MATERIAL: COPPER ALLOY
 - 3. SEE ITEM 1 & 2 IN PRINT 10064183 FOR PLATING SPEC OF 51939-384 AND 51939-384LF RESPECTIVELY
 - 4. MANUFACTURER'S NAME, P/N, AND DATE CODE TO APPEAR ON THIS SURFACE.
 - 5. PRODUCT SPECIFICATION GS-12-149.
APPLICATION SPECIFICATION BUS-20-067.
 - 6. PACKAGED IN TRAYS.
- PCB NOTES:
- 7. ALL HOLE DIAMETERS ARE FINISHED HOLE SIZE.
 - 8. MOUNTING HOLES, WHERE APPLICABLE, ARE UNPLATED.
 - 9. $\varnothing 1.151 \pm 0.025$ DRILLED HOLES PLATED WITH
0.008 MIN SnPb OR Sn OVER 0.03
TO 0.08 Cu PLATING TO ACHIEVE
 $\varnothing 1.02 \pm .07$ HOLE.
 - 10. "DIM XXX" TO BE DETERMINED BY THE CUSTOMER.
 - 11. CONNECTOR KEEP-OUT ZONE.

mat'l code		SEE NOTE		tolerances unless otherwise specified		CUSTOMER		 www.fciconnect.com	
ltr	ecn no.	dr	date	linear	0.X ±0.5		COPY		title 24S + 10P RIGHT ANGLE SOLDER HEADER
A					0.XX ±0.25		projection		
				angles	0.XXX ±0.1				product family PwrBlade
					0° ±2°				
				dr	Warren Du	10/10/08	scale		size
				engr	Warren Du	10/10/08	1:1		dwg no 51939-384
				chr	Gary Hsieh	10/10/08			sheet 4 of 4
				appd	Joseph Hsia	10/10/08			
sheet index	revision sheet								

1 | 2

Pro/E

PDM: Rev: A

STAT: Released

Printed: Dec 20, 2010