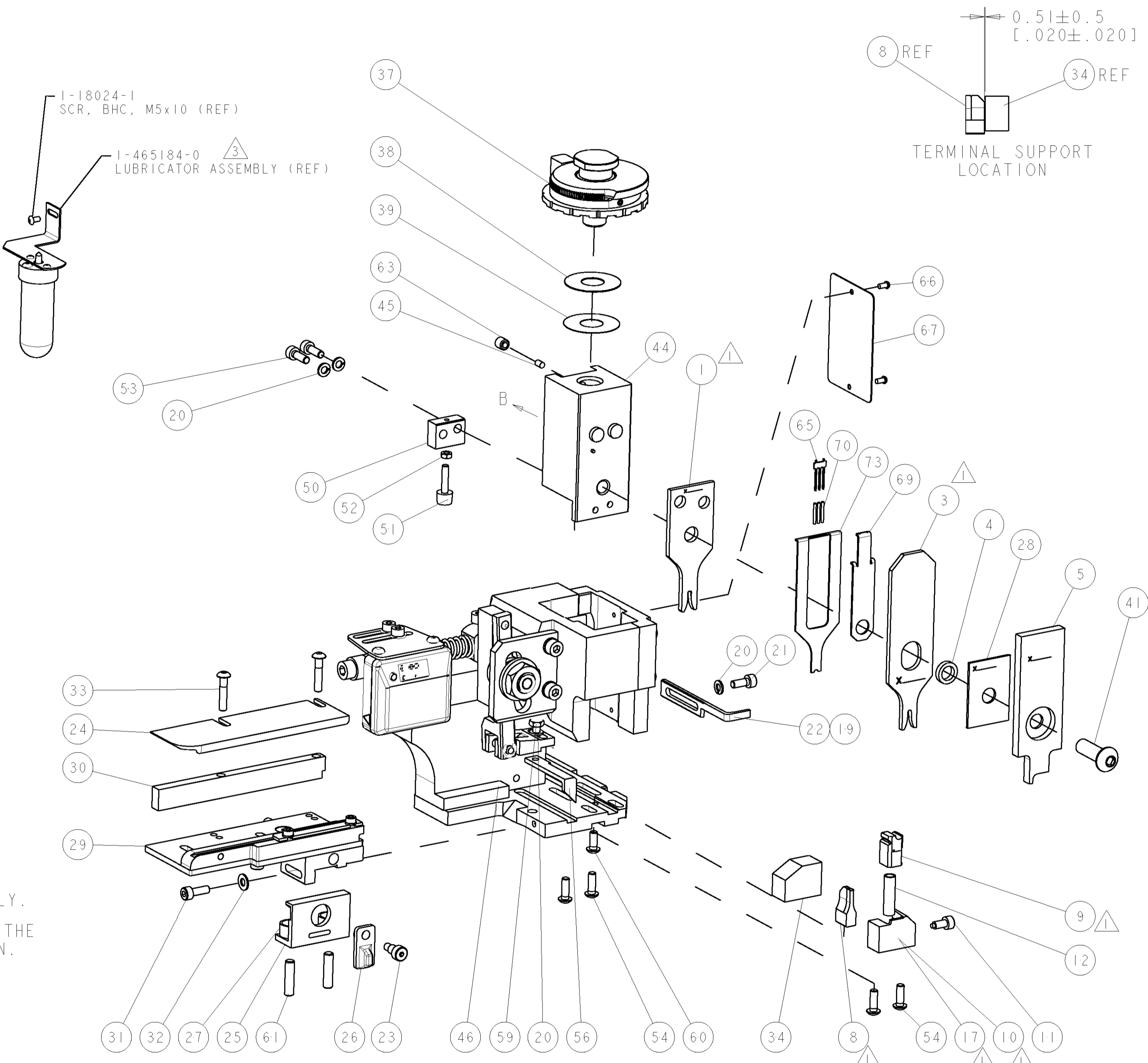
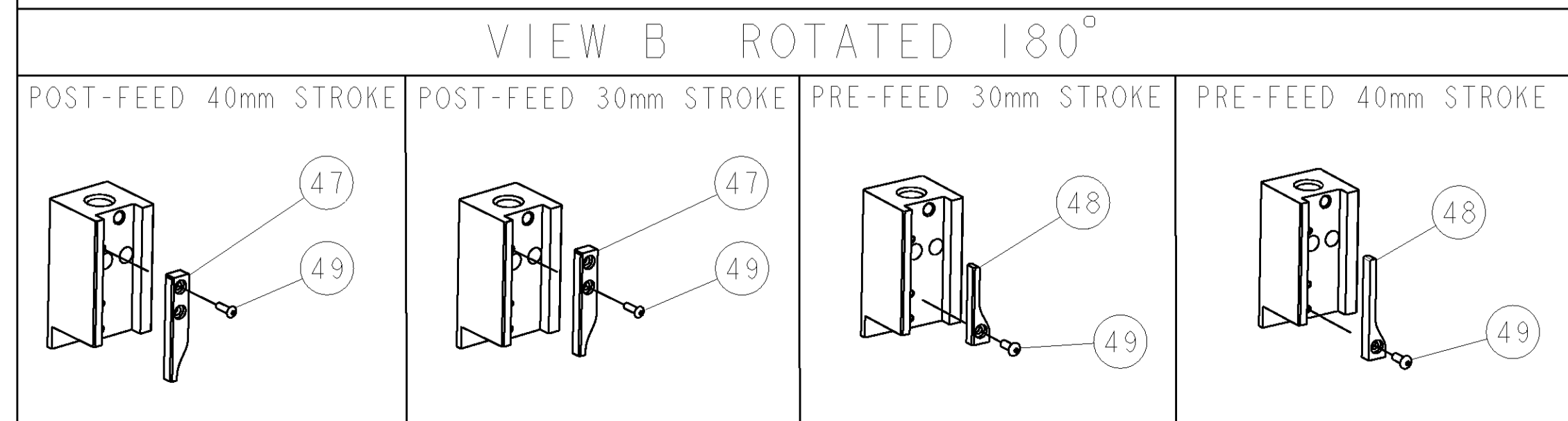


PART NUMBER	REV	TERMINATOR	FEED TYPE	DESCRIPTION
1528722-1	A	LEADMAKER	MECH POST FEED	CUTS CARRIER
1528722-2	A	BENCH	MECH PRE FEED	CUTS CARRIER
1528722-6	A	LEADMAKER	MECH POST FEED	CONTINUOUS CARRIER
7-1528722-1	A	LEADMAKER	MECH POST FEED	-1 AND SPARE PARTS
7-1528722-2	A	BENCH	MECH PRE FEED	-2 AND SPARE PARTS
7-1528722-6	A	LEADMAKER	MECH POST FEED	-6 AND SPARE PARTS
7-1528722-7	A	-	-	SPARE PARTS KIT

CRIMP DATA		GHW/LEAR TERMINAL		LEAR CRIMP SPECS	
TERMINAL NAME: MFS 1.5 X 0.6 M.ZUS-F					
CRIMP	SIZE	TYPE	RANGE		
WIRE	1.91 (.075 IN)	F	0.50mm ² -1.00mm ²		
INSUL	2.29 (.090 IN)	O	1.40-2.10 (.055-.083 IN)		
WIRE STRIP LENGTH		APPL INSTRUCTIONS			
4.00-4.50 (.157-.177 IN)		408-8322 & 408-8490			
TERMINAL LEAR SHEET		FEED		APPL SPEC	
26127		11.05 (.435 IN)			
TERMINALS APPLIED					
TYCO PN	MANUF'S PN				
1949161-1	26127.201.179				
1949161-2	26127.201.702				
1949161-3	26127.331.178				
WIRE SIZE	CRIMP HEIGHT	REF SETTING			
1.00mm ²	1.30 ± 0.05 (.051 ± .002 IN)	B 6			
0.75mm ²	1.25 ± 0.05 (.049 ± .002 IN)	C 1			
0.50mm ²	1.20 ± 0.05 (.047 ± .002 IN)	C 3			

- △ RECOMMENDED SPARE PARTS.
- 2. GREASE RAM, CAM, CAM FOLLOWER AND FEED ROD LIGHTLY.
- △ 3. CERTAIN TERMINALS REQUIRE LUBRICATION. REFER TO THE APPLICATOR INSTRUCTION SHEET FOR MORE INFORMATION.
- 4. LUBRICATE DAILY PER THE APPLICATOR INSTRUCTION SHEET SUPPLIED WITH THE APPLICATOR.
- △ 5. TERMINAL APPLIES TYPE FLY INSULATION.
- △ 6. CRIMP DATA SUPPLIED BY TERMINAL MANUFACTURER.



* WARNING
ON INSTALLATION, SET WIRE DISC TO LARGEST WIRE SIZE SETTING. USE OF SETTINGS BELOW MIN. REQUIRED CRIMP HEIGHT SETTING WILL CAUSE DAMAGE TO CRIMP TOOLING.

ITEM NO	DESCRIPTION	ITEM NO	DESCRIPTION						
84		84							
83		83							
82		82							
81		81							
80		80							
79		79							
78		78							
77		77							
76		76							
75		75							
74		74							
77	-76	-72	-71	-6	-2	-1	PART NO	DESCRIPTION	ITEM NO

REVISONS				DATE	BY	APPV
LOC	QTY	DESCRIPTION	DATE	BY	APPV	
A	66	SEE ECR-06-024667	190CT2006	LJL	MC	

ITEM NO	DESCRIPTION	ITEM NO
73	DEPRESSOR, WIRE	73
72		72
71	DOCUMENTATION PACKAGE	71
70	SPRING, COMPRESSION	70
69	DEPRESSOR, SPACER	69
68		68
67	PLATE, IDENTIFICATION	67
66	SCREW, DRIVE	66
65	HOLDER, PIN, WIRED	65
64		64
63	SCR, SET, CUP POINT M6 X 6.0	63
62		62
61	SCR, SET, FLT POINT M5 X 20.0	61
60	SCR, BTN SKT HD CAP (M4 X 10.0)	60
59	SCR, HEX HD CAP M4 X 8.0	59
58		58
57		57
56	PAWL, FEED	56
55		55
54	SCR, BTN SKT HD CAP (M4 X 12.0)	54
53	SCR, SKT HD CAP M4 X 12.0	53
52	NUT, HEX, REG M3	52
51	BUMPER, HOLD DOWN	51
50	SPACER, TONKER	50
49	SCR, BTN SKT HD CAP (M3 X 10.0)	49
48	CAM, UNIVERSAL PRE FEED	48
47	CAM, UNIVERSAL POST-FEED	47
46	APPLICATOR SUBASSEMBLY, HDI	46
45	PLUG, NYLON	45
44	RAM	44
43		43
42		42
41	SCR, BTN SKT HD CAP (M8 X 25.0)	41
40		40
39	SHIM SUB-ASSY	39
38	SHIM	38
37	FINE ADJUST HEAD ASSEMBLY	37
36		36
35		35
34	SUPPORT, TERMINAL	34
33	SCR, BTN SKT HD CAP (M4 X 20.0)	33
32	WASHER, FLAT, REG M4	32
31	SCR, SKT HD CAP M4 X 12.0	31
30	SPACER, STRIP GUIDE	30
29	STRIP GUIDE ASSEMBLY	29
28	SPACER, CRIMPER	28
27	SPRING, COMPRESSION	27
26	LEVER, DRAG RELEASE	26
25	DRAG, TERMINAL	25
24	PLATE, STRIP GUIDE	24
23	SCR, SKT HD SHLDR 5.0 DIA X 6.0	23
22	STRIPPER	22
21	SCR, SKT HD CAP M4 X 10.0	21
20	WASHER, SPRG LOCK, REG M4	20
19	STRIPPER	19
18		18
17	SHEAR HOLDER, FRONT	17
16		16
15		15
14		14
13		13
12	SPRING, COMPRESSION	12
11	STOP, SHEAR	11
10	SHEAR HOLDER, FRONT, CUT	10
9	FLOATING SHEAR, FRONT	9
8	ANVIL, COMBINATION	8
7		7
6		6
5	DEPRESSOR, SHEAR	5
4	BLOCK, CRIMPER SPACER	4
3	CRIMPER, INSULATION O PREMIUM	3
2		2
1	CRIMPER, WIRE	1

ITEM NO	DESCRIPTION	ITEM NO							
77	-76	-72	-71	-6	-2	-1	PART NO	DESCRIPTION	ITEM NO

DIMENSIONS: mm [IN]	TOLERANCES UNLESS OTHERWISE SPECIFIED: 0 PLC ± 1 PLC ± 2 PLC ± 3 PLC ± 4 PLC ± ANGLES ±	MATERIAL: FINISH:
------------------------	---	----------------------

DWN: D. PROUSE CDR: M. CLIFFORD APVD: M. CLIFFORD PRODUCT SPEC: APPLICATION SPEC: See Table WEIGHT: CUSTOMER DRAWING:	22SEP2006 22SEP2006 NAME: SIZE: A CAGE CODE: 00779 DRAWING NO: C-1528722 SCALE: 3:5 SHEET: 1 OF 1 REV: A
--	--