

4

3

2

1


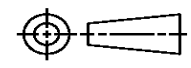
THIS DRAWING IS UNPUBLISHED. RELEASED FOR PUBLICATION  
© COPYRIGHT ALL RIGHTS RESERVED.

LOC		DIST		REVISIONS			
P	LTR	DESCRIPTION		DATE	DWN	APVD	
	A1	ECR-16-009824		28JUL2016	GK	SD	

# REPLACED BY OCEAN STYLE APPLICATOR PART NUMBER 2836284-1

FOR REPLACEMENT PARTS FOR APPLICATOR 1426569  
REFER TO ADDITIONAL PAGE(S). SPARE PARTS KIT (IF LISTED)  
WILL REMAIN AVAILABLE.

THE REPLACEMENT OCEAN STYLE APPLICATOR HAS THE  
SAME TERMINATOR/PRESS INTERFACE AS APPLICATOR  
1426569

THIS DRAWING IS A CONTROLLED DOCUMENT.		DWN	GOPALAKRISHNA HV			TE Connectivity			
DIMENSIONS:		CHK	GOPALAKRISHNA HV			NAME			
		TOLERANCES UNLESS OTHERWISE SPECIFIED:		SIDE FEED HDI APPLICATOR					
		0 PLC	±	APVD	STOUGH DALE		PRODUCT SPEC		
MATERIAL		1 PLC	±	APPLICATION SPEC		SIZE	CAGE CODE	DRAWING NO	RESTRICTED TO
FINISH		2 PLC	±	WEIGHT		A3		©- 1426569	
		3 PLC	±	CUSTOMER DRAWING		SCALE	SHEET 1 OF 2	REV	A1
		4 PLC	±						
		ANGLES	±						

PART NUMBER	REV	TERMINATOR	FEED TYPE	DESCRIPTION
1426569-1	A	LEADMAKER	MECH POST FEED	CUTS CARRIER
1426569-2	A	BENCH	MECH PRE FEED	CUTS CARRIER
1426569-6	A	LEADMAKER	MECH POST FEED	CONTINUOUS CARRIER
7-1426569-1	A	LEADMAKER	MECH POST FEED	-1 AND SPARE PARTS
7-1426569-2	A	BENCH	MECH PRE FEED	-2 AND SPARE PARTS
7-1426569-6	A	LEADMAKER	MECH POST FEED	-6 AND SPARE PARTS
7-1426569-7	A	-	-	SPARE PARTS KIT

CRIMP	SIZE	TYPE	RANGE
WIRE	2.29 [ .090 IN ]	F	22-18 AWG
INSUL	3.94 [ .155 IN ]	O	2.03-3.05 [ .080-.120 IN ]
WIRE STRIP LENGTH	4.40-5.16 [ .173-.203 IN ]		APPL INSTRUCTIONS 408-8322

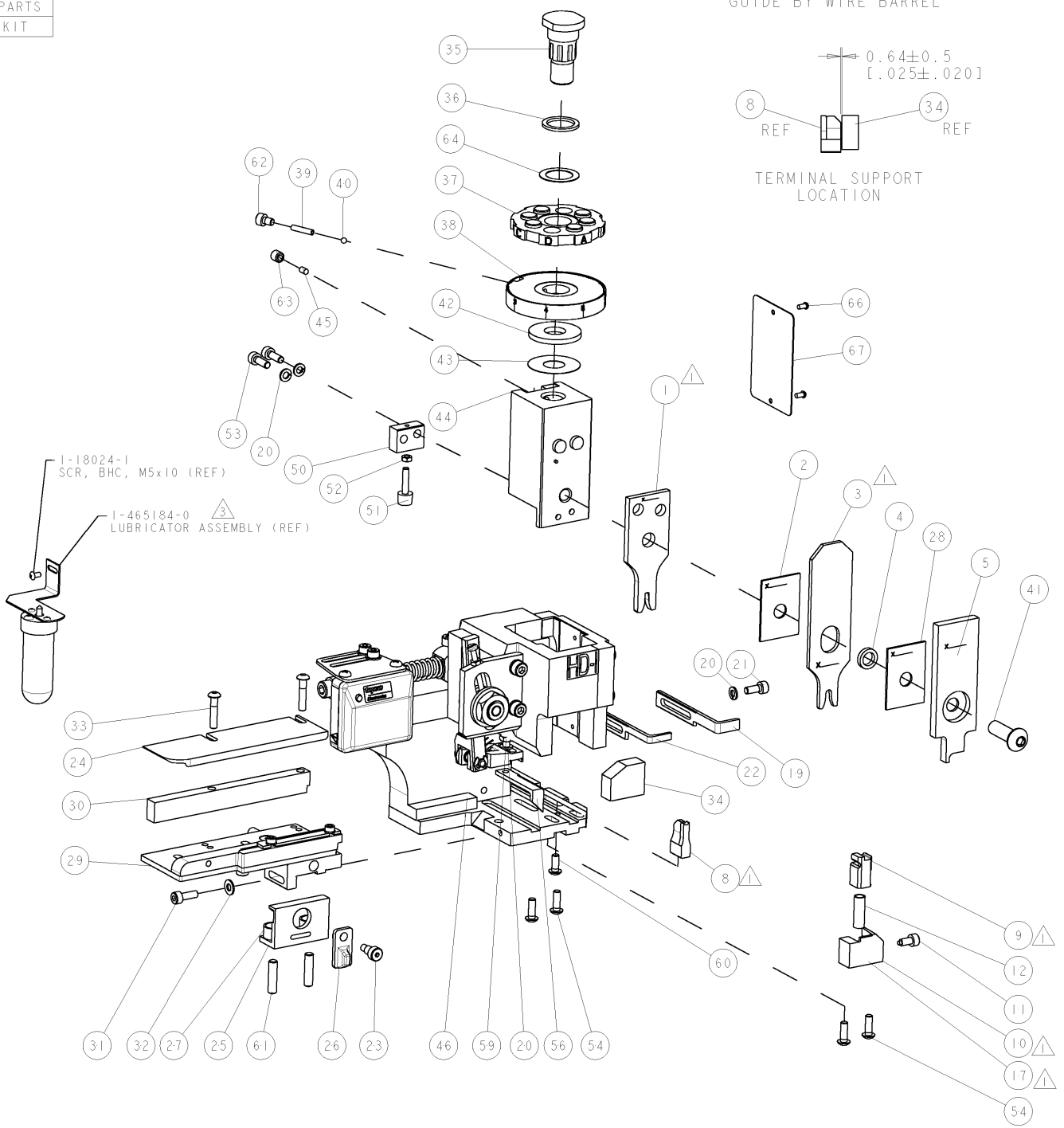
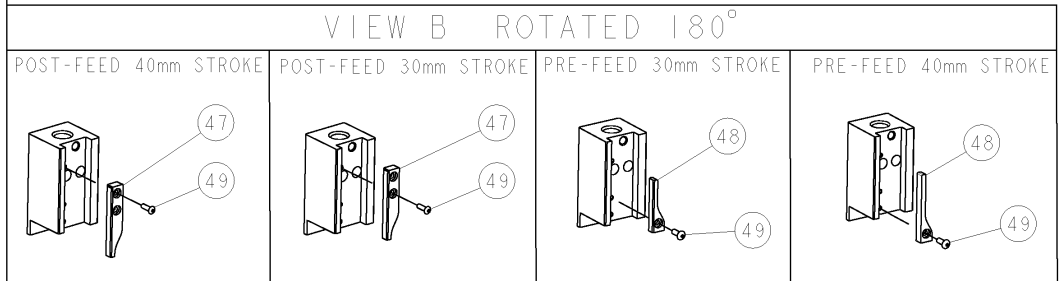
  

TERMINAL APPL SPEC	FEED
114-2036	11.18 [ .440 IN ]

WIRE SIZE	CRIMP HEIGHT	PIN PN & LENGTH [IN]
18 AWG	1.57 ± 0.05 [ .062 ± .002 IN ]	1-354779-3 [ .3055 ]
20 AWG	1.52 ± 0.05 [ .060 ± .002 IN ]	1-354779-8 [ .3080 ]
22 AWG	1.45 ± 0.05 [ .057 ± .002 IN ]	2-354779-4 [ .3110 ]

- ▲ RECOMMENDED SPARE PARTS.
- 2. GREASE RAM, CAM, CAM FOLLOWER AND FEED ROD LIGHTLY.
- ▲ CERTAIN TERMINALS REQUIRE LUBRICATION. REFER TO THE APPLICATOR INSTRUCTION SHEET FOR MORE INFORMATION.
- 4. LUBRICATE DAILY PER THE APPLICATOR INSTRUCTION SHEET SUPPLIED WITH THE APPLICATOR.
- ▲ APPL. SPEC 114-2036 TO BE USED FOR ALL OTHER CRIMP INFORMATION NOT STATED ABOVE.



LOC	DIST	REV	DESCRIPTION	DATE	BY	APPV
A	66	1	SEE ECO-05-012970	04NOV2005	LJL	MC

ITEM NO	DESCRIPTION	ITEM NO
-	-	73
-	-	72
-	-	71
-	-	70
-	-	69
-	-	68
-	-	67
-	-	66
-	-	65
-	-	64
-	-	63
-	-	62
-	-	61
-	-	60
-	-	59
-	-	58
-	-	57
-	-	56
-	-	55
-	-	54
-	-	53
-	-	52
-	-	51
-	-	50
-	-	49
-	-	48
-	-	47
-	-	46
-	-	45
-	-	44
-	-	43
-	-	42
-	-	41
-	-	40
-	-	39
-	-	38
-	-	37
-	-	36
-	-	35
-	-	34
-	-	33
-	-	32
-	-	31
-	-	30
-	-	29
-	-	28
-	-	27
-	-	26
-	-	25
-	-	24
-	-	23
-	-	22
-	-	21
-	-	20
-	-	19
-	-	18
-	-	17
-	-	16
-	-	15
-	-	14
-	-	13
-	-	12
-	-	11
-	-	10
-	-	9
-	-	8
-	-	7
-	-	6
-	-	5
-	-	4
-	-	3
-	-	2
-	-	1

ITEM NO	DESCRIPTION	ITEM NO
-	-	84
-	-	83
-	-	82
-	-	81
-	-	80
-	-	79
-	-	78
-	-	77
-	-	76
-	-	75
-	-	74
-77 -76 -72 -71 -6 -2 -1	PART NO	DESCRIPTION

DIMENSIONS: mm [IN] TOLERANCES UNLESS OTHERWISE SPECIFIED: 0 PLC ± 1 PLC ± 2 PLC ± 3 PLC ± 4 PLC ± ANGLES ±	D. PROUSE 20SEP2005 M. CLIFFORD 20SEP2005 See Table	Tyco Electronics Harrisburg, PA 17105-3608 SIDE FEED HDI APPLICATOR SIZE: CARE CODE: DRAWING NO: 1426569 SCALE: 3:5 SHEET 1 OF 1 REV A
---	---	--