

1746798-1 ✓ ACTIVE

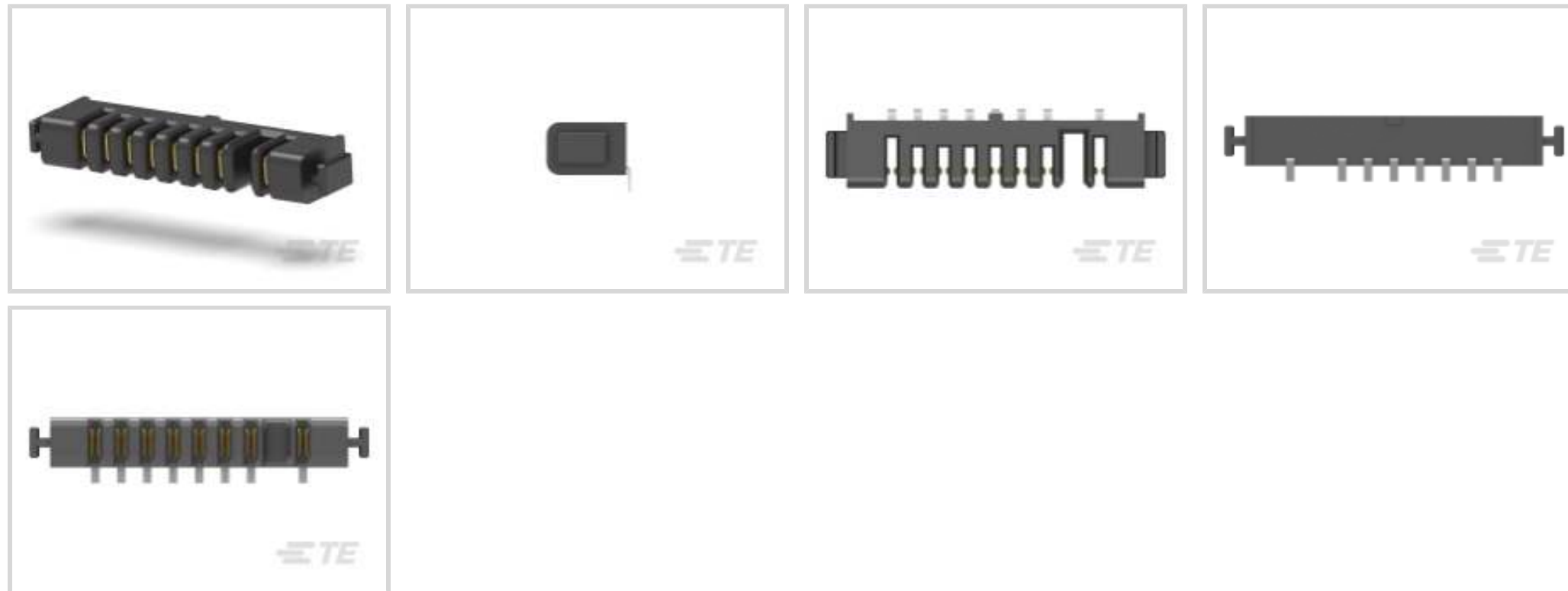


TE Internal #: 1746798-1

DC Jack Connectors, Board-to-Board, 8 Position, .098 in [2.5 mm]
Centerline, Receptacle, 30 VDC, Right Angle, Printed Circuit Board,
Signal

[View on TE.com >](#)

Connectors > PCB Connectors > Battery Connectors & Holders > DC Jack Connectors



Connector System: **Board-to-Board**

Number of Positions: **8**

Centerline (Pitch): **2.5 mm [.098 in]**

Connector & Housing Type: **Receptacle**

Operating Voltage: **30 VDC**

Features

Product Type Features

Connector System	Board-to-Board
Connector & Housing Type	Receptacle
Connector & Contact Terminates To	Printed Circuit Board

Configuration Features

Number of Positions	8
PCB Mount Orientation	Right Angle

Electrical Characteristics

Operating Voltage	30 VDC
-------------------	--------

Contact Features

Contact Current Rating (Max)	7 A
------------------------------	-----

Mechanical Attachment

PCB Mount Retention	Without
Connector Mounting Type	Board Mount

Housing Features



Centerline (Pitch)	2.5 mm[.098 in]
--------------------	-----------------

Usage Conditions

Operating Temperature Range	-20 – 80 °C[-4 – 176 °F]
-----------------------------	--------------------------

Operation/Application

Circuit Application	Signal
---------------------	--------

Packaging Features

Packaging Quantity	100
--------------------	-----

Packaging Method	Tray
------------------	------

Product Compliance

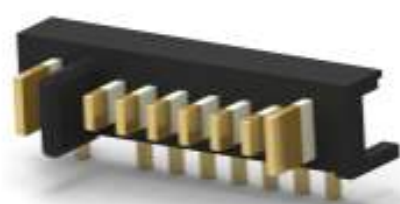
For compliance documentation, visit the product page on [TE.com](#)>

EU RoHS Directive 2011/65/EU	Compliant
EU ELV Directive 2000/53/EC	Compliant
China RoHS 2 Directive MIIT Order No 32, 2016	No Restricted Materials Above Threshold
EU REACH Regulation (EC) No. 1907/2006	Current ECHA Candidate List: JUNE 2023 (235) Candidate List Declared Against: JUNE 2023 (235) Does not contain REACH SVHC
Halogen Content	Not Low Halogen - contains Br or Cl > 900 ppm.
Solder Process Capability	Reflow solder capable to 245°C

Product Compliance Disclaimer

This information is provided based on reasonable inquiry of our suppliers and represents our current actual knowledge based on the information they provided. This information is subject to change. The part numbers that TE has identified as EU RoHS compliant have a maximum concentration of 0.1% by weight in homogenous materials for lead, hexavalent chromium, mercury, PBB, PBDE, DBP, BBP, DEHP, DIBP, and 0.01% for cadmium, or qualify for an exemption to these limits as defined in the Annexes of Directive 2011/65/EU (RoHS2). Finished electrical and electronic equipment products will be CE marked as required by Directive 2011/65/EU. Components may not be CE marked. Additionally, the part numbers that TE has identified as EU ELV compliant have a maximum concentration of 0.1% by weight in homogenous materials for lead, hexavalent chromium, and mercury, and 0.01% for cadmium, or qualify for an exemption to these limits as defined in the Annexes of Directive 2000/53/EC (ELV). Regarding the REACH Regulation, the information TE provides on SVHC in articles for this part number is based on the latest European Chemicals Agency (ECHA) 'Guidance on requirements for substances in articles' posted at this URL: <https://echa.europa.eu/guidance-documents/guidance-on-reach>

Compatible Parts



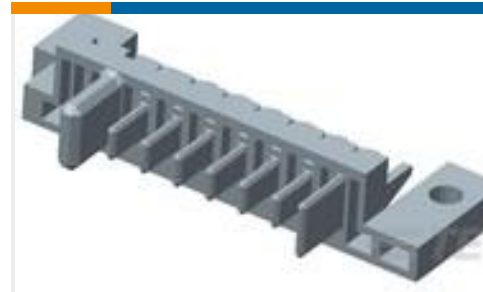
TE Part # 1717445-6
PLUG ASSY 8POS.GRAY,2.5MM
PITCH BATTERY



TE Part # 1717620-1
2.5MM PITCH BATTERY REC. ASSY
8POS. R/A

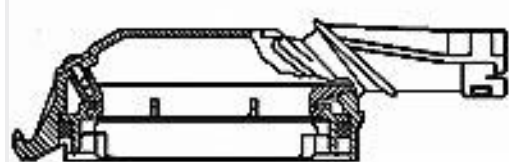


TE Part # 1932677-1
2.5BATTERY PLUG ASSY 8POS.
OFFSET TYPE



TE Part # 1932677-2
2.5BATTERY PLUG ASSY 8POS.
OFFSET TYPE

Customers Also Bought



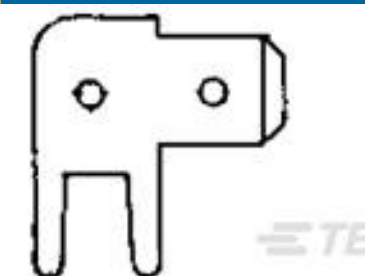
TE Part #963317-1
25P JUN-TIM GEH KPL



TE Part #5-1462037-8
IM43TS=IM RELAY 100mW 5V BIS



TE Part #5-747913-2
25 Rcpt Solder Cup, Gold Flash



TE Part #726389-2
187 FASTON TAB TPBR



TE Part #1658621-9
40 NOVO MIL/CTR 15DP,LEAD FREE

TE Part #85-100G-OUT
NISO,NO FIT,UNCOMP,TUBE

TE Part #85-300G-OUT
NISO,NO FIT,UNCOMP,TUBE

TE Part #85-300G-1UT
NISO,1/4NPT,7/8HEX,UNCOMP,TUBE

Documents

Product Drawings

[2.5MM PITCH BATTERY REC. ASSY 8POS. R/A](#)

Japanese

CAD Files

[3D PDF](#)

3D

Customer View Model

[ENG_CVM_CVM_1746798-1_B.2d_dxf.zip](#)

English

Customer View Model

[ENG_CVM_CVM_1746798-1_B.3d_igs.zip](#)

English

Customer View Model

[ENG_CVM_CVM_1746798-1_B.3d_stp.zip](#)

English

By downloading the CAD file I accept and agree to the [Terms and Conditions](#) of use.



Datasheets & Catalog Pages

[2_PIECE_POWER_CONNECTORS_qrg_4-1773458-1](#)

English

Product Specifications

[Product Specification](#)

English

Product Environmental Compliance

[TE Material Declaration](#)

English