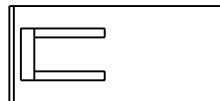
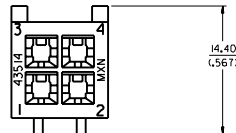
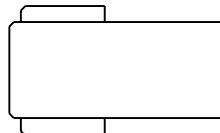
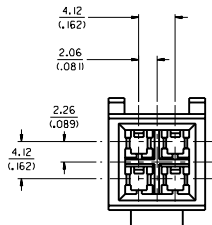
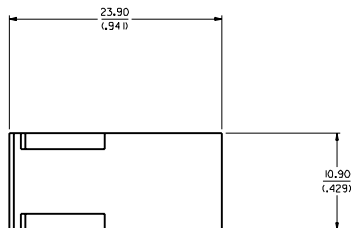


**NOTES:**

1. MATERIAL: POLYESTER (PBT), UN-FILLED, UL 94V-0. COLOR: BLACK
2. FINISH: NONE
3. PRODUCT SPEC.: PS-43510-002
4. ALL DIMENSIONS SHOWN FOR REFERENCE ONLY.
5. USES STANDARD 5558 AND 30490 MINI-FIT JR. MALE CRIMP TERMINALS.
6. MATES WITH 43511-0001 RECEPTACLE POD.
7. PART TO BE USED WITH 43839-0\*\*\* PLUG SHROUD. (SEE SHROUD DRAWING FOR ASSEMBLY INFORMATION)



ADDED LEAD-INS EC NO. LCR 1939-0594 JORNINPOLGAR 9903711 CMPR. COMERC1 9903715 APPR. COMERC1 9903715	QUALITY SYMBOLS MAJOR $\blacktriangledown$ CRITICAL $\nabla$	GENERAL TOLERANCES: (UNLESS SPECIFIED) 4 PLACES $\pm 0.15$ mm $\pm .006$ INCH 3 PLACES $\pm 0.25$ mm $\pm .010$ INCH 2 PLACES $\pm 0.38$ mm $\pm .015$ INCH 1 PLACE $\pm 0.51$ mm $\pm .020$ INCH	SCALE: 4:1 DESIGN UNITS: <input checked="" type="checkbox"/> mm <input type="checkbox"/> INCH THIRD ANGLE PROJECTION	DRAWN BY & DATE: COMERC1 97/10/06 CHECKED BY & DATE: COMERC1 97/10/06 APPROVED BY & DATE: FRY 97/10/10	DIMENSIONS: <input checked="" type="checkbox"/> mm <input type="checkbox"/> INCH <input type="checkbox"/> mm <input type="checkbox"/> INCH ONLY	SHEET NO. 1 OF 1 REVISE ON CAD ONLY
	CAD FILENAME: S4351401.DGN MATERIAL NO.: 43514-0001 DRAWING NO.: SD-43514-001	TITLE: MINI-FIT JR. PLUG, 4 CIRCUIT, DUAL ROW COMPODRE SYSTEM		MOLEX INCORPORATED		SIZE D