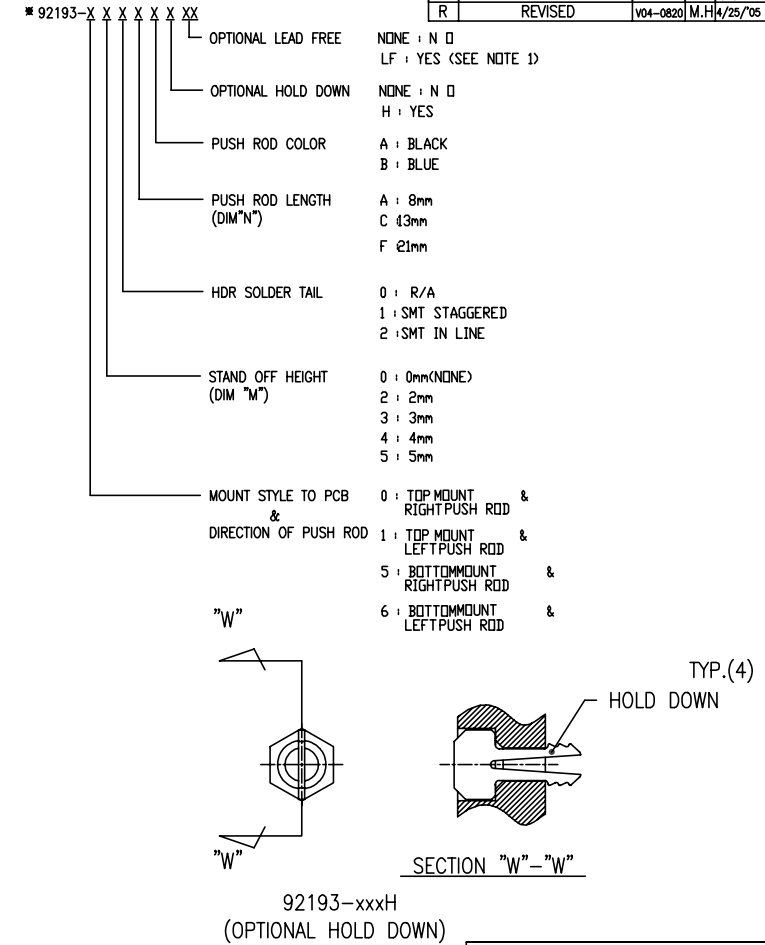
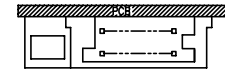
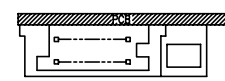
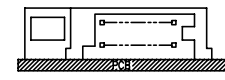
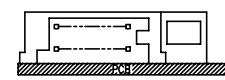


| |
|-------------|
| PRODUCT NO. |
| 92193 |

| REVISIONS | | | |
|-----------|---|----------|--------------|
| REV | DESCRIPTION | ECN | BY DATE |
| V | CORRECT WRONG DRAWING | N08-0163 | SH 6/3/09 |
| B | REVISED | J30128 | M.K 4/27/94 |
| C | REVISED | J40163 | M.K 5/28/94 |
| D | REVISED | V40740 | M.K 6/24/94 |
| E | REVISED | V40840 | M.K 7/5/94 |
| F | REVISED | J40198 | M.K 7/19/94 |
| G | REVISED | V32120 | M.K 12/27/94 |
| H | REVISED | J40349 | M.K 1/20/95 |
| J | REVISED | J50242 | M.K 9/18/95 |
| K | REVISED | V60956 | M.K 7/29/96 |
| L | REVISED/ADDED-050CAH -130CA -130CAH | J70134 | K.S 8/8/97 |
| M | REVISED | N90076 | M.K 7/22/99 |
| N | REVISED (ADDED-502FA) | V91593 | M.K 11/11/99 |
| P | REVISED | J05-0198 | M.H 4/4/05 |
| R | REVISED | V04-0820 | M.H 4/25/05 |

| PRODUCT NO. *92193-XXXXX | STAND OFF(mm) | DIM "N" (mm) | PUSH ROD COLOR | HDR SOLDER TAIL | HOLD DOWN | MECH ASSY 92192-XXXXX | HDR ASSY 92140-XXXXX | DIM "P" (mm) | HDR COLOR | SHEET NO. | MOUNT STYLE TO PCB & DIRECTION OF PUSH ROD |
|-----------------------------|------------------|-----------------|-------------------|--------------------|-----------|--------------------------|-------------------------|-----------------|--------------|--------------|--|
| 000AA | 0 | 8 | BLACK | R/A | NONE | 00AA | 000 | 2.8 | | | |
| 000CA | 0 | 13 | BLACK | R/A | NONE | 00CA | 000 | 2.8 | | | |
| 000CAH | 0 | 13 | BLACK | R/A | YES | 00CAH | 000H | 2.8 | | | |
| 000CB | 0 | 13 | BLUE | R/A | NONE | 00CB | 000 | 2.8 | | | |
| 000CBH | 0 | 13 | BLUE | R/A | YES | 00CBH | 000H | 2.8 | | | |
| 000FA | 0 | 21 | BLACK | R/A | YES | 00FA | 000 | 2.8 | | | |
| 001AA | 0 | 8 | BLACK | SMT STAGGERED | NONE | 00AA | 001 | -- | BLACK | NO.2 | TOP MOUNT TO PCB & RIGHT PUSH ROD |
| 001AAH | 0 | 8 | BLACK | SMT STAGGERED | YES | 00AAH | 001H | -- | | | |
| 001CA | 0 | 13 | BLACK | SMT STAGGERED | NONE | 00CA | 001 | -- | | | |
| 001CAH | 0 | 13 | BLACK | SMT STAGGERED | YES | 00CAH | 001H | -- | | | |
| 001FA | 0 | 21 | BLACK | SMT STAGGERED | NONE | 00FA | 001 | -- | | | |
| 001FAH | 0 | 21 | BLACK | SMT STAGGERED | YES | 00FAH | 001H | -- | | | |
| 002CA | 0 | 13 | BLACK | SMT IN LINE | NONE | 00CA | 002 | -- | | | |
| 002CAH | 0 | 13 | BLACK | SMT IN LINE | YES | 00CAH | 002H | -- | | | |
| 020CA | 2 | 13 | BLACK | R/A | NONE | 02CA | 040 | 2.5 | BLACK | NO.3 | |
| 040CA | 4 | 13 | BLACK | R/A | NONE | 04CA | 010 | 2.8 | | | |
| 050CA | 5 | 13 | BLACK | R/A | NONE | 05CA | 020 | 2.8 | | | |
| 050CAH | 5 | 13 | BLACK | R/A | YES | 05CAH | 020H | 2.8 | | | |
| 100CA | 0 | 13 | BLACK | R/A | NONE | 10CA | 000 | 2.8 | | | |
| 100CAH | 0 | 13 | BLACK | R/A | YES | 10CAH | 000H | 2.8 | | | |
| 101CA | 0 | 13 | BLACK | SMT STAGGERED | NONE | 10CA | 001 | -- | BLACK | NO.4 | TOP MOUNT TO PCB & LEFT PUSH ROD |
| 101CAH | 0 | 13 | BLACK | SMT STAGGERED | YES | 10CAH | 001H | -- | | | |
| 101FA | 0 | 21 | BLACK | SMT STAGGERED | NONE | 10FA | 001 | -- | | | |
| 101FAH | 0 | 21 | BLACK | SMT STAGGERED | YES | 10FAH | 001H | -- | | | |
| 102CA | 0 | 13 | BLACK | SMT IN LINE | NONE | 10CA | 002 | -- | | | |
| 102CAH | 0 | 13 | BLACK | SMT IN LINE | YES | 10CAH | 002H | -- | | | |
| 120CA | 2 | 13 | BLACK | R/A | NONE | 12CA | 040 | 2.5 | | | |
| 120FA | 2 | 21 | BLACK | R/A | NONE | 12FA | 040 | 2.5 | | | |
| 130CA | 3 | 13 | BLACK | R/A | NONE | 13CA | 050 | 2.8 | BLACK | NO.5 | |
| 130CAH | 3 | 13 | BLACK | R/A | YES | 13CAH | 050H | 2.8 | | | |
| 140CA | 4 | 13 | BLACK | R/A | NONE | 14CA | 010 | 2.8 | | | |
| 150CA | 5 | 13 | BLACK | R/A | NONE | 15CA | 020 | 2.8 | | | |
| 500CA | 0 | 13 | BLACK | R/A | NONE | 10CA | 500 | 2.8 | | | |
| 500CAH | 0 | 13 | BLACK | R/A | YES | 10CAH | 500H | 2.8 | | | |
| 500FA | 0 | 21 | BLACK | R/A | NONE | 10FA | 500 | 2.8 | | | |
| 501CA | 0 | 13 | BLACK | SMT STAGGERED | NONE | 10CA | 501 | -- | NATURAL | NO.6 | BOTTOM MOUNT TO PCB & RIGHT PUSH ROD |
| 501CAH | 0 | 13 | BLACK | SMT STAGGERED | YES | 10CAH | 501H | -- | | | |
| 502CA | 0 | 13 | BLACK | SMT IN LINE | NONE | 10CA | 502 | -- | | | |
| 502CAH | 0 | 13 | BLACK | SMT IN LINE | YES | 10CAH | 502H | -- | | | |
| 502FA | 0 | 21 | BLACK | SMT IN LINE | NONE | 10FA | 502 | -- | | | |
| 520CA | 2 | 13 | BLACK | R/A | NONE | 12CA | 540 | 2.5 | NATURAL | NO.7 | |
| 540CA | 4 | 13 | BLACK | R/A | NONE | 14CA | 510 | 2.8 | | | |
| 550CA | 5 | 13 | BLACK | R/A | NONE | 15CA | 520 | 2.8 | | | |
| 600CA | 0 | 13 | BLACK | R/A | NONE | 00CA | 500 | 2.8 | | | |
| 600CAH | 0 | 13 | BLACK | R/A | YES | 00CAH | 500H | 2.8 | | | |
| 601CA | 0 | 13 | BLACK | SMT STAGGERED | NONE | 00CA | 501 | -- | NATURAL | NO.8 | BOTTOM MOUNT TO PCB & LEFT PUSH ROD |
| 601CAH | 0 | 13 | BLACK | SMT STAGGERED | YES | 00CAH | 501H | -- | | | |
| 602CA | 0 | 13 | BLACK | SMT IN LINE | NONE | 00CA | 502 | -- | | | |
| 602CAH | 0 | 13 | BLACK | SMT IN LINE | YES | 00CAH | 502H | -- | | | |
| 620CA | 2 | 13 | BLACK | R/A | NONE | 02CA | 540 | 2.5 | NATURAL | NO.9 | |
| 640CA | 4 | 13 | BLACK | R/A | NONE | 04CA | 510 | 2.8 | | | |
| 650CA | 5 | 13 | BLACK | R/A | NONE | 05CA | 520 | 2.8 | | | |



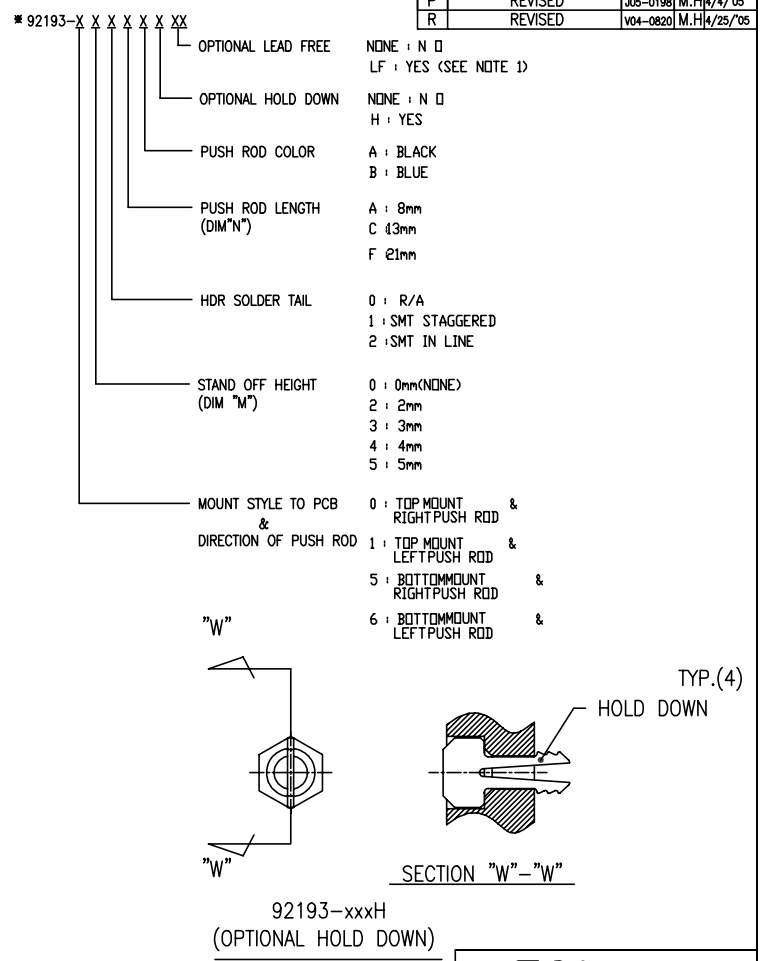
NOTE
1. THIS PRODUCT MEETS EUROPEAN UNION
DIRECTIVES AND OTHER COUNTRY
REGULATIONS AS DESCRIBED IN GS-22-008.

| | | | | | | | |
|-------------|-------|--------|-----|-------------|---------|---------------|--|
| SHEET INDEX | ISSUE | SH NO. | MAT | DR | DATE | CUSTOMER COPY | TITLE |
| | | | | M. Hasegawa | 4/25/05 | | 68P EJECTOR HEADER ASSY FOR TYPE I/II/III (FOR 5.0V) |
| LINEAR | | | | ENGR | 4/25/05 | | PRODUCT FAMILY SANF Header PCMCIA CODE J/P |
| ANGLES | | | | CHK | | | SCALE DWG. NO. 92193 REV SHEET 1 of 10 |

| |
|-------------|
| PRODUCT NO. |
| 92193 |

| REVISIONS | | | |
|-----------|---|----------|--------------|
| REV | DESCRIPTION | ECN | BY DATE |
| A | CORRECT WRONG DRAWING | N09-0163 | SH 6/3/09 |
| B | REVISED | J30128 | M.K 4/27/94 |
| C | REVISED | J40163 | M.K 5/28/94 |
| D | REVISED | V40740 | M.K 6/24/94 |
| E | REVISED | V40840 | M.K 7/5/94 |
| F | REVISED | J40198 | M.K 7/19/94 |
| G | REVISED | V32120 | M.K 12/27/94 |
| H | REVISED | J40349 | M.K 1/20/95 |
| J | REVISED | J50242 | M.K 9/18/95 |
| K | REVISED | V60956 | M.K 7/29/96 |
| L | REVISED/ADDED-050CAH -130CA -130CAH | J70134 | K.S 8/8/97 |
| M | REVISED | N90076 | M.K 7/22/99 |
| N | REVISED (ADDED-502FA) | V91593 | M.K 11/11/99 |
| P | REVISED | J05-0198 | M.H 4/4/05 |
| R | REVISED | V04-0820 | M.H 4/25/05 |

| PRODUCT NO. *92193-XXXXX | STAND OFF(mm) | DIM "N" (mm) | PUSH ROD COLOR | HDR SOLDER TAIL | HOLD DOWN | MECH ASSY 92192-XXXXX | HDR ASSY 92140-XXXXX | DIM "P" (mm) | HDR COLOR | SHEET NO. | MOUNT STYLE TO PCB & DIRECTION OF PUSH ROD | |
|-----------------------------|------------------|-----------------|-------------------|--------------------|-----------|--------------------------|-------------------------|-----------------|--------------|--------------|--|---|
| 000AALF | 0 | 8 | BLACK | R/A | NONE | 00AA | 000LF | 2.8 | BLACK | NO.2 | TOP MOUNT TO PCB & RIGHT PUSH ROD | |
| 000CALF | 0 | 13 | BLACK | R/A | NONE | 00CA | 000LF | 2.8 | BLACK | NO.2 | | |
| 000CAHLF | 0 | 13 | BLACK | R/A | YES | 00CAH | 000HLF | 2.8 | BLACK | NO.2 | | |
| 000CBLF | 0 | 13 | BLUE | R/A | NONE | 00CB | 000LF | 2.8 | BLACK | NO.2 | | |
| 000CBHLF | 0 | 13 | BLUE | R/A | YES | 00CBH | 000HLF | 2.8 | BLACK | NO.2 | | |
| 000FALF | 0 | 21 | BLACK | R/A | YES | 00FA | 000LF | 2.8 | BLACK | NO.2 | | |
| 001AA | 0 | 8 | BLACK | SMT STAGGERED | NONE | 00AA | 001 | -- | BLACK | NO.2 | | |
| 001AAH | 0 | 8 | BLACK | SMT STAGGERED | YES | 00AAH | 001H | -- | BLACK | NO.2 | | |
| 001CA | 0 | 13 | BLACK | SMT STAGGERED | NONE | 00CA | 001 | -- | BLACK | NO.2 | | |
| 001CAH | 0 | 13 | BLACK | SMT STAGGERED | YES | 00CAH | 001H | -- | BLACK | NO.2 | | |
| 001FA | 0 | 21 | BLACK | SMT STAGGERED | NONE | 00FA | 001 | -- | BLACK | NO.2 | | |
| 001FAH | 0 | 21 | BLACK | SMT STAGGERED | YES | 00FAH | 001H | -- | BLACK | NO.2 | | |
| 002CA | 0 | 13 | BLACK | SMT IN LINE | NONE | 00CA | 002 | -- | BLACK | NO.2 | | |
| 002CAH | 0 | 13 | BLACK | SMT IN LINE | YES | 00CAH | 002H | -- | BLACK | NO.2 | | |
| 020CALF | 2 | 13 | BLACK | R/A | NONE | 02CA | 040LF | 2.5 | BLACK | NO.3 | TOP MOUNT TO PCB & LEFT PUSH ROD | |
| 040CALF | 4 | 13 | BLACK | R/A | NONE | 04CA | 010LF | 2.8 | BLACK | NO.3 | | |
| 050CALF | 5 | 13 | BLACK | R/A | NONE | 05CA | 020LF | 2.8 | BLACK | NO.3 | | |
| 050CAHLF | 5 | 13 | BLACK | R/A | YES | 05CAH | 020HLF | 2.8 | BLACK | NO.3 | | |
| 100CALF | 0 | 13 | BLACK | R/A | NONE | 10CA | 000LF | 2.8 | BLACK | NO.3 | | |
| 100CAHLF | 0 | 13 | BLACK | R/A | YES | 10CAH | 000HLF | 2.8 | BLACK | NO.3 | | |
| 101CA | 0 | 13 | BLACK | SMT STAGGERED | NONE | 10CA | 001 | -- | BLACK | NO.3 | | |
| 101CAH | 0 | 13 | BLACK | SMT STAGGERED | YES | 10CAH | 001H | -- | BLACK | NO.3 | | |
| 101FA | 0 | 21 | BLACK | SMT STAGGERED | NONE | 10FA | 001 | -- | BLACK | NO.3 | | |
| 101FAH | 0 | 21 | BLACK | SMT STAGGERED | YES | 10FAH | 001H | -- | BLACK | NO.3 | | |
| 102CA | 0 | 13 | BLACK | SMT IN LINE | NONE | 10CA | 002 | -- | BLACK | NO.3 | | |
| 102CAH | 0 | 13 | BLACK | SMT IN LINE | YES | 10CAH | 002H | -- | BLACK | NO.3 | | |
| 120CALF | 2 | 13 | BLACK | R/A | NONE | 12CA | 040LF | 2.5 | BLACK | NO.4 | TOP MOUNT TO PCB & LEFT PUSH ROD | |
| 120CAHLF | 2 | 13 | BLACK | R/A | YES | 12CAH | 040HLF | 2.5 | BLACK | NO.4 | | |
| 120FALF | 2 | 21 | BLACK | R/A | NONE | 12FA | 040LF | 2.5 | BLACK | NO.4 | | |
| 130CALF | 3 | 13 | BLACK | R/A | NONE | 13CA | 050LF | 2.8 | BLACK | NO.4 | | |
| 130CAHLF | 3 | 13 | BLACK | R/A | YES | 13CAH | 050HLF | 2.8 | BLACK | NO.4 | | |
| 140CALF | 4 | 13 | BLACK | R/A | NONE | 14CA | 010LF | 2.8 | BLACK | NO.4 | | |
| 150CALF | 5 | 13 | BLACK | R/A | NONE | 15CA | 020LF | 2.8 | BLACK | NO.4 | | |
| 500CALF | 0 | 13 | BLACK | R/A | NONE | 10CA | 500LF | 2.8 | BLACK | NO.4 | | |
| 500CAHLF | 0 | 13 | BLACK | R/A | YES | 10CAH | 500HLF | 2.8 | BLACK | NO.4 | | |
| 500FALF | 0 | 21 | BLACK | R/A | NONE | 10FA | 500LF | 2.8 | BLACK | NO.4 | | |
| 501CA | 0 | 13 | BLACK | SMT STAGGERED | NONE | 10CA | 501 | -- | NATURAL | NO.6 | BOTTOM MOUNT TO PCB & RIGHT PUSH ROD | |
| 501CAH | 0 | 13 | BLACK | SMT STAGGERED | YES | 10CAH | 501H | -- | NATURAL | NO.6 | | |
| 502CA | 0 | 13 | BLACK | SMT IN LINE | NONE | 10CA | 502 | -- | NATURAL | NO.6 | | |
| 502CAH | 0 | 13 | BLACK | SMT IN LINE | YES | 10CAH | 502H | -- | NATURAL | NO.6 | | |
| 502FA | 0 | 21 | BLACK | SMT IN LINE | NONE | 10FA | 502 | -- | NATURAL | NO.6 | | |
| 520CALF | 2 | 13 | BLACK | R/A | NONE | 12CA | 540LF | 2.5 | NATURAL | NO.7 | | BOTTOM MOUNT TO PCB & LEFT PUSH ROD |
| 540CALF | 4 | 13 | BLACK | R/A | NONE | 14CA | 510LF | 2.8 | NATURAL | NO.7 | | |
| 550CALF | 5 | 13 | BLACK | R/A | NONE | 15CA | 520LF | 2.8 | NATURAL | NO.7 | | |
| 600CALF | 0 | 13 | BLACK | R/A | NONE | 00CA | 500LF | 2.8 | NATURAL | NO.7 | | |
| 600CAHLF | 0 | 13 | BLACK | R/A | YES | 00CAH | 500HLF | 2.8 | NATURAL | NO.7 | | |
| 601CA | 0 | 13 | BLACK | SMT STAGGERED | NONE | 00CA | 501 | -- | NATURAL | NO.8 | | |
| 601CAH | 0 | 13 | BLACK | SMT STAGGERED | YES | 00CAH | 501H | -- | NATURAL | NO.8 | | |
| 602CA | 0 | 13 | BLACK | SMT IN LINE | NONE | 00CA | 502 | -- | NATURAL | NO.8 | | |
| 602CAH | 0 | 13 | BLACK | SMT IN LINE | YES | 00CAH | 502H | -- | NATURAL | NO.8 | | |
| 620CALF | 2 | 13 | BLACK | R/A | NONE | 02CA | 540LF | 2.5 | NATURAL | NO.9 | | |
| 640CALF | 4 | 13 | BLACK | R/A | NONE | 04CA | 510LF | 2.8 | NATURAL | NO.9 | | |
| 650CALF | 5 | 13 | BLACK | R/A | NONE | 05CA | 520LF | 2.8 | NATURAL | NO.9 | | |

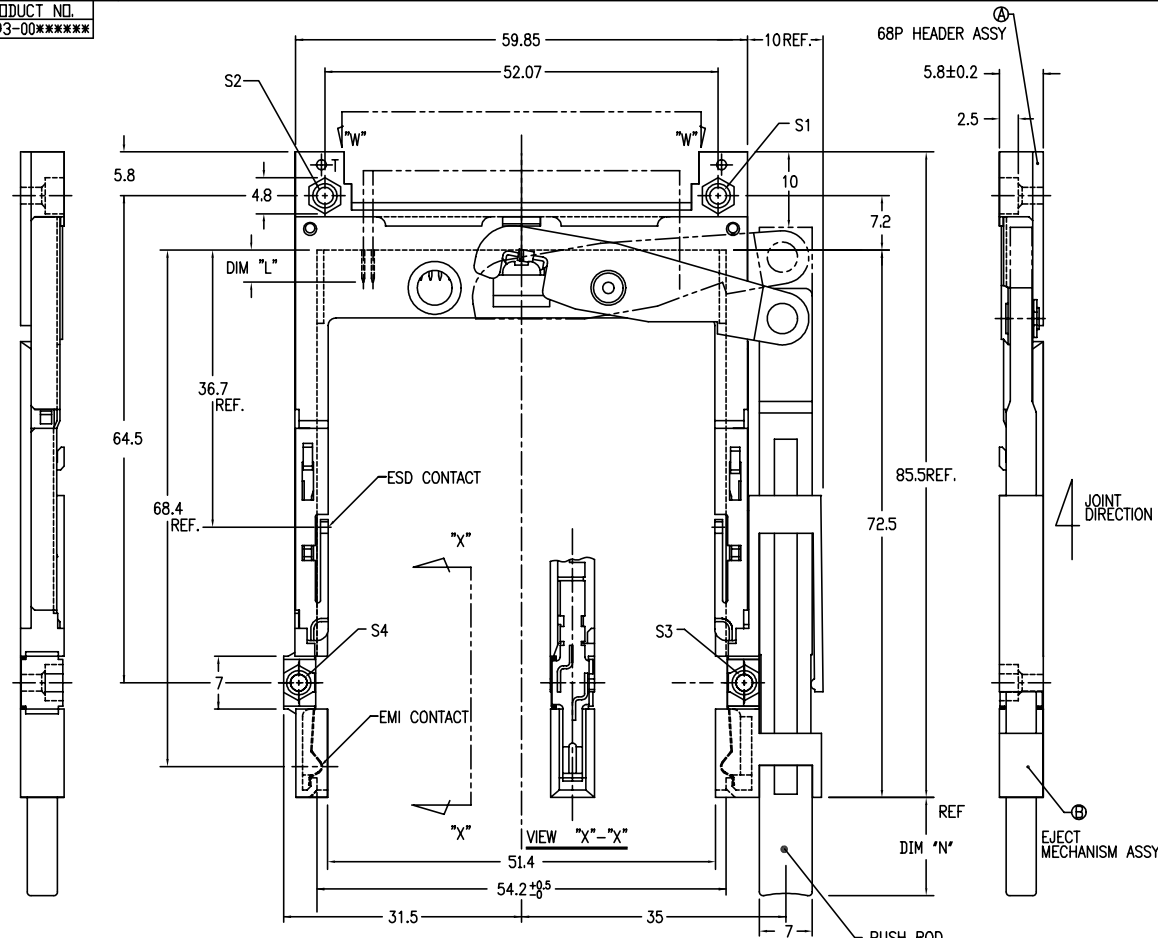


NOTE
1. THIS PRODUCT MEETS EUROPEAN UNION DIRECTIVES AND OTHER COUNTRY REGULATIONS AS DESCRIBED IN GS-22-008.

| | | | | | | | |
|-------------|---------------------------------------|--------|-----|--------------|--------------|------------------|--|
| SHEET INDEX | ISSUE | SH NO. | MAT | DR. Hasegawa | DATE 4/25/05 | CUSTOMER COPY | TITLE 68P EJECTOR HEADER ASSY FOR TYPE I / II / III (FOR 5.0V) |
| LINEAR | TOLERANCES UNLESS OTHERWISE SPECIFIED | | | CHK Hasegawa | DATE 4/25/05 | THIRD ANGLE PROJ | PRODUCT FAMILY SANF Header PCMCIA |
| ANGLES | | | | APPD | | SCALE | SIZE DWG. NO. 92193 |
| | | | | | | UNIT | REV SHEET V 2 of 2 |

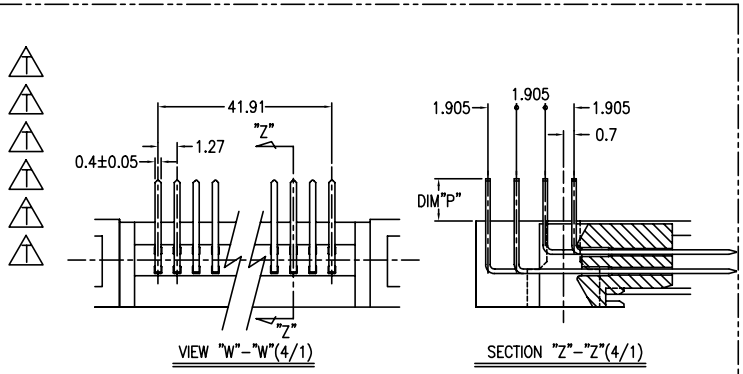
PRODUCT NO.
92193-00*****

| REVISED | | | | REVISIONS | | | | | |
|---------|-------------------------|----------|-----|-----------|-----|-------------|--------|-----|----------|
| L | REVISED | J05-0198 | M.H | 4/4/05 | REV | DESCRIPTION | ECN | BY | DATE |
| M | REVISED | V04-0820 | M.H | 4/25/05 | F | REVISED | J40198 | M.K | 7/19/94 |
| T | REVISED (ADDED -*****L) | N05-0127 | WB | J05/18/05 | G | REVISED | V32120 | M.K | 12/27/94 |
| U | | | | | H | REVISED | J40349 | M.K | 1/9/95 |
| V | | | | | J | REVISED | J50242 | M.K | 9/18/95 |
| | | | | | K | REVISED | J70134 | K.S | 8/8/97 |



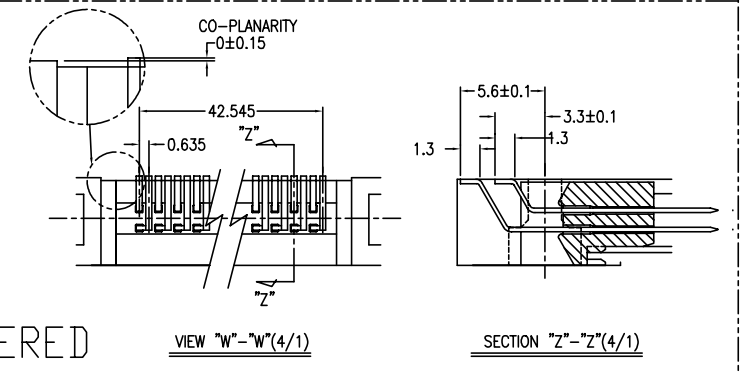
PRODUCT NO.

| |
|-----------------------|
| 92193-000AA/000AALF |
| 92193-000CA/000CALF |
| 92193-000CAH/000CAHLF |
| 92193-000CB/000CBLF |
| 92193-000CBH/000CBHLF |
| 92193-000FA/000FALF |



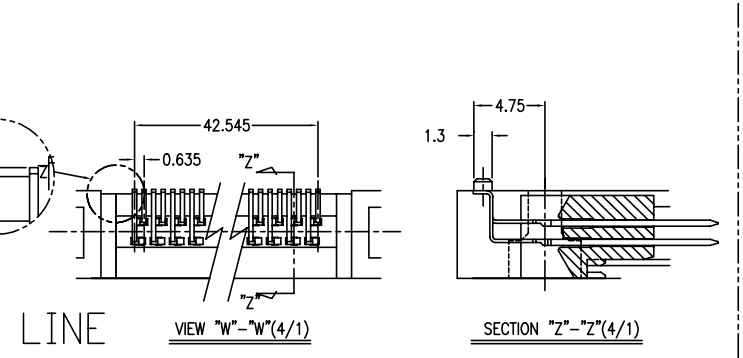
PRODUCT NO.

| |
|--------------|
| 92193-001AA |
| 92193-001AAH |
| 92193-001CA |
| 92193-001CAH |
| 92193-001FA |
| 92193-001FAH |



PRODUCT NO.

| |
|--------------|
| 92193-002CA |
| 92193-002CAH |



- NOTE
- EJECT FORCE 3.5Kg MAX.
 - ASSY PROCESS
 - TO MOUNT PART ① ON PWB WITH SCREW (S1,S2) AND SOLDER.
 - TO JOINT PART ② INTO PART ①, THEN FIX PART ② WITH 2 SCREWS (S3,S4).
 - EJECT TRAVEL 8.0mm
- ④ MATERIAL
- PART ① (HEADER ASSY)
 - HOUSING : LCP UL94V-0
 - PIN : PHOSPHOR BRONZE
 - PART ② (EJECT MECHANISM ASSY)
 - GUIDE : POLYPHTHAMID UL94V-0 BLACK
 - PUSH ROD : FLAME RETARDANT UL94V-0
 - PLATE : STAINLESS
 - EMI CONTACT : PHOSPHOR BRONZE
 - OPTIONAL HOLD-DOWN : BRASS

- ⑤ FINISH 5.1 PIN
- UNDER PLATING : 0.5µm MIN. Ni
CONTACT AREA : 0.1µm MIN. Au OVER 0.5µm MIN. Pd-Ni
SOLDER TAIL : 2.5µm MIN. Sn-Pb OR 2.5µm MIN. PURE Sn.(FOR -*****L)
- EMI CONTACT
 - UNDER PLATING : 2.0µm MIN. Ni
 - CONTACT AREA : 0.5µm MIN. Au
 - OPTIONAL HOLD-DOWN : 2.5µm MIN. PURE Sn.

| PIN No. | DIM "L" | | |
|---------|----------|---------|----------|
| | 4.25±0.1 | 3.5±0.1 | 5.0±0.1 |
| OTHERS | 36.67 | 17.34 | 35.51.68 |

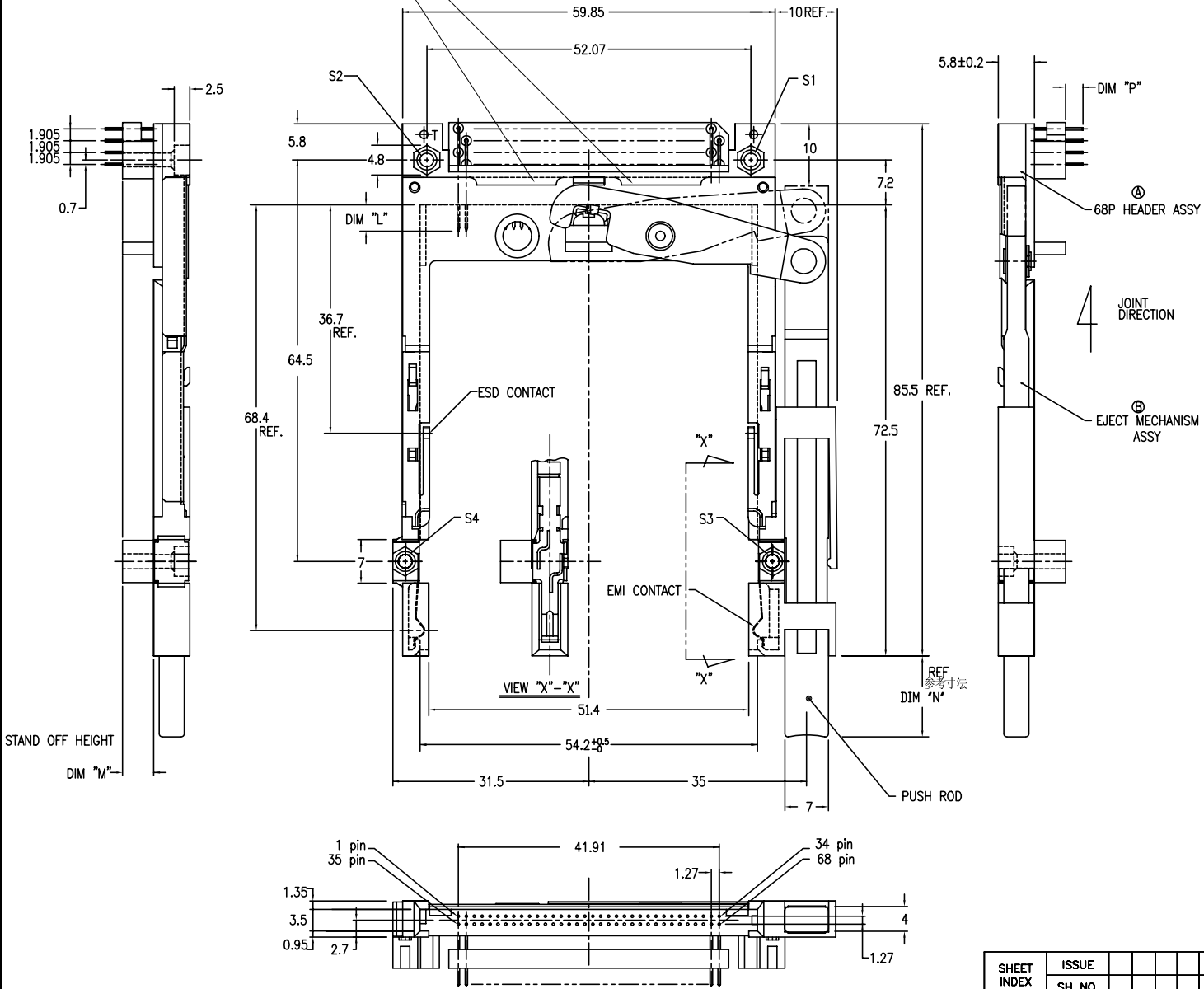
- SEE TA-946 FOR PCB LAYOUT.
- SEE 92140 FOR DETAILED HDR DIMENSION.
- SEE SHEET 1,2 REGARDING COMPONENTS.
- GENERAL TOLERANCE : ±0.3

| SHEET INDEX | ISSUE | SH NO. | TOLERANCES UNLESS OTHERWISE SPECIFIED | MAT | DR | DATE | CUSTOMER COPY | TITLE | | |
|-------------|-------|--------|---------------------------------------|------------|------------|---------|---------------|--|-----------------------------------|----------|
| | | | | | | | | SCALE | SIZE | DWG. NO. |
| | | | | SEE NOTE ④ | M.Hasegawa | 4/25/05 | | 68P EJECTOR HEADER ASSY FOR TYPE I/II/III (FOR 5.0V) | PRODUCT FAMILY SANF Header PCMCIA | CODE JP |
| | | | | SEE NOTE ④ | M.Hasegawa | 4/25/05 | | 2/1 | C | 92193 |
| | | | | SEE NOTE ④ | APPD | | | UNIT | MM | REV V |
| ANGLES | | | | | | | | | | 3 OF 3 |

| PRODUCT NO. |
|-----------------------|
| 92193-020CA/020CALF |
| 92193-040CA/040CALF |
| 92193-050CA/050CALF |
| 92193-050CAH/050CAHLF |

REVISION V

| REVISIONS | | | | |
|-----------|--------------------------|----------|-----|-----------|
| REV | DESCRIPTION | ECN | BY | DATE |
| A | RELEASED | J30022 | N.T | 1/19/93 |
| B | REVISED | J40163 | M.K | 5/26/94 |
| C | REVISED | V40840 | M.K | 7/ 5/94 |
| D | REVISED | V32120 | M.K | 2/27/94 |
| E | REVISED | J40349 | M.K | 1/9/95 |
| F | REVISED | J50242 | M.K | 9/18/95 |
| G | REVISED (ADDED-050CAH) | J70134 | K.S | 8/8/97 |
| T | REVISED (ADDED -*****LF) | N05-0127 | WG | 3/5/18/05 |
| U | | | | |
| V | | | | |



- NOTE
- EJECT FORCE 3.5Kg MAX.
 - ASSY PROCESS
2.1 TO MOUNT PART ④ ON PWB WITH SCREW (S1,S2) AND SOLDER.
2.2 TO JOINT PART ④ INTO PART ④, THEN FIX PART ④ WITH 2 SCREWS (S3,S4).
 - EJECT TRAVEL 8.0mm
- ④ MATERIAL (HEADER ASSY)
- PART ④ (HEADER ASSY)
HOUSING : LCP UL94V-0
PIN : PHOSPHOR BRONZE
 - PART ④ (EJECT MECHANISM ASSY)
GUIDE : POLYPHTHARAMID UL94V-0 BLACK
PUSH ROD : FLAME RETARDANT UL94V-0
PLATE : STAINLESS
EMI CONTACT : PHOSPHOR BRONZE
STANDOFF : ZINC ALLOYS DIE CASTING
- ⑤ FINISH
- PIN
UNDER PLATING : 0.5µm MIN. Ni
CONTACT AREA : 0.1µm MIN. Au OVER 0.5µm MIN. Pd-Ni
SOLDER TAIL : 2.5µm MIN. Sn-Pb
OR 2.5µm MIN. PURE Sn.(FOR -*****LF)
 - EMI CONTACT
UNDER PLATING : 2.0µm MIN. Ni
CONTACT AREA : 0.5µm MIN. Au
 - STAND OFF : 3 ~5µm Ni, OVER 5 ~10µm Cu.
6. PIN NO.

STAND OFF HEIGHT
DIM "M"

| SHEET INDEX | ISSUE SH NO. | MAT | DR | DATE | CUSTOMER COPY |
|-------------|--------------|------------|-----------|-----------------|---------------|
| | | SEE NOTE ④ | T. Uno | 8/8/97 | |
| | | | K. Suzuki | 8/8/97 | |
| LINEAR | | FINISH | CHK | THRU ANGLE PROJ | UNIT |
| ANGLES | | SEE NOTE ⑤ | APPD | | |

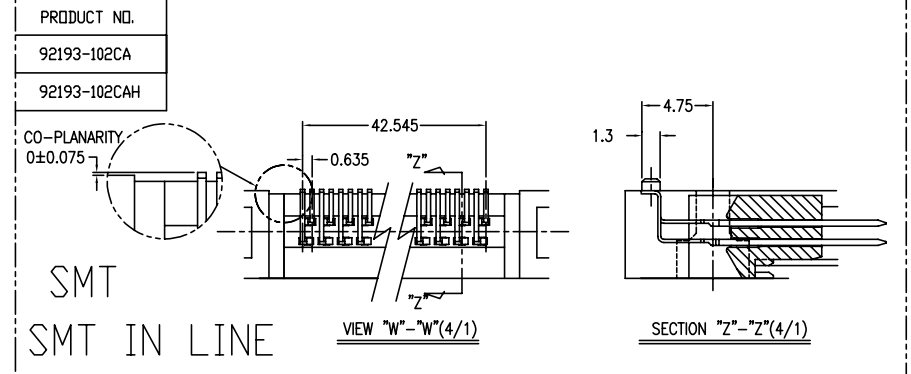
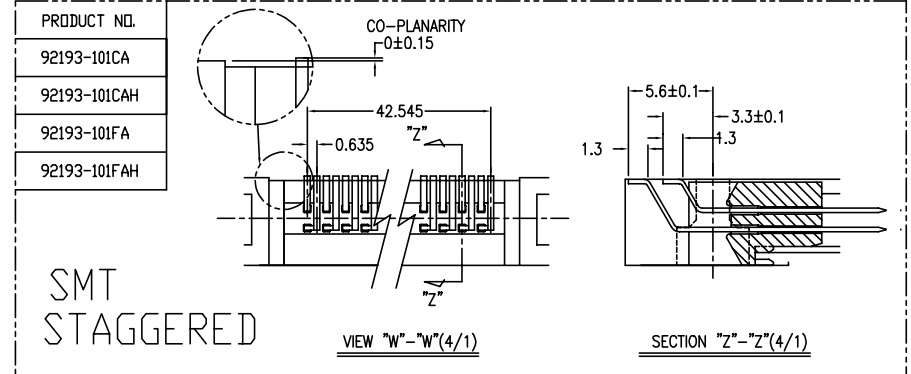
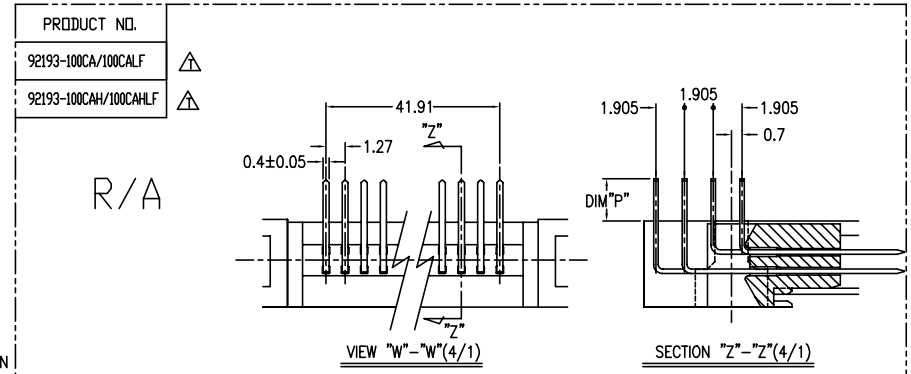
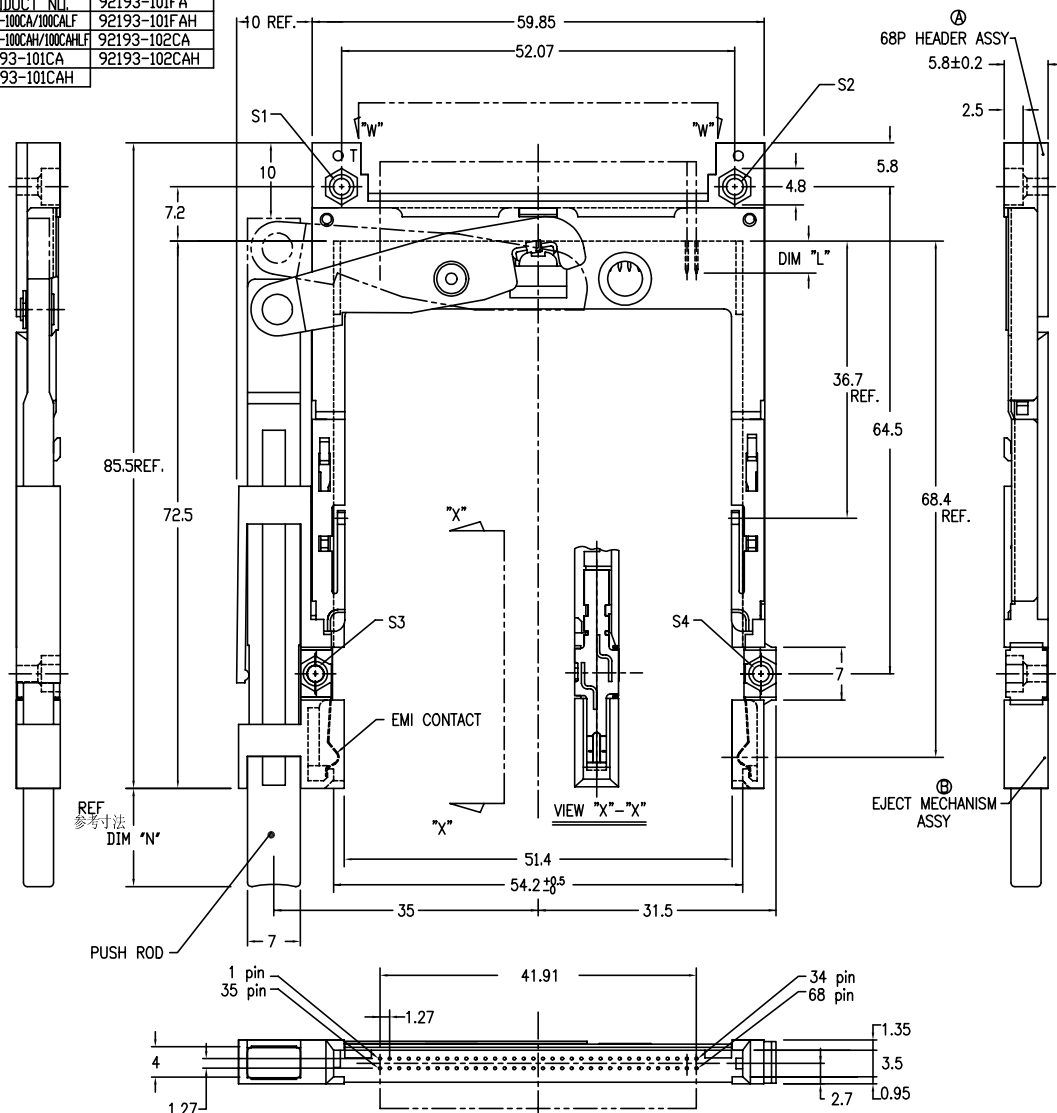
FCI

TITLE: 68P EJECTOR HEADER ASSY FOR TYPE I/II/III (FOR 5.0V)

SCALE: 2/1
SIZE: C
DWG. NO.: 92193
REV: V
SHEET: 4 of 4

| | |
|-----------------------|--------------|
| PRODUCT NO. | 92193-101FA |
| 92193-100CA/100CALF | 92193-101FAH |
| 92193-100CAH/100CAHLF | 92193-102CA |
| 92193-101CA | 92193-102CAH |
| 92193-101CAH | |

| T | REVISED (ADDED -*****LF) | N05-0127 | WB | J05/18/05 | REVISIONS | | | | |
|-----|--------------------------|----------|-----|-----------|-----------|--|--|--|--|
| REV | DESCRIPTION | ECN | BY | DATE | | | | | |
| F | REVISED | J40198 | M.K | 7/19/94 | | | | | |
| F | REVISED | V32120 | M.K | 12/27/94 | | | | | |
| G | REVISED | J40349 | M.K | 1/9/95 | | | | | |
| H | REVISED | J50242 | M.K | 8/18/95 | | | | | |
| J | REVISED | J70134 | K.S | 8/8/97 | | | | | |



- NOTE
- EJECT FORCE 3.5Kg MAX.
 - ASSY PROCESS
 - TO MOUNT PART ① ON PWB WITH SCREW (S1,S2) AND SOLDER.
 - TO JOINT PART ② INTO PART ①, THEN FIX PART ③ WITH 2 SCREWS (S3,S4).
 - EJECT TRAVEL 8.0mm
 - MATERIAL
 - PART ① (HEADER ASSY)
 - HOUSING : LCP UL94V-0
 - PIN : PHOSPHOR BRONZE
 - PART ② (EJECT MECHANISM ASSY)
 - GUIDE : POLYPHTHARAMID UL94V-0 BLACK
 - PUSH ROD : FLAME RETARDANT UL94V-0
 - PLATE : STAINLESS
 - EMI CONTACT : PHOSPHOR BRONZE
 - OPTIONAL HOLD-DOWN : BRASS
- ⑤ FINISH 5.1 PIN
- UNDER PLATING : 0.5µm MIN. Ni
CONTACT AREA : 0.1µm MIN. Au OVER 0.5µm MIN. Pd-Ni
SOLDER TAIL : 2.5µm MIN. Sn-Pb OR 2.5µm MIN. PURE Sn.(FOR -*****LF)
- ⑥ PIN NO.
- | PIN No. | DIM "L" | | |
|---------|----------|---------|----------|
| | 4.25±0.1 | 3.5±0.1 | 5.0±0.1 |
| OTHERS | 36.67 | 17.34 | 35.51.88 |
- SEE TA-946 FOR PCB LAYOUT.
 - SEE 92140 FOR DETAILED HDR DIMENSION.
 - SEE SHEET 1,2 REGARDING COMPONENTS.
 - GENERAL TOLERANCE : ±0.3

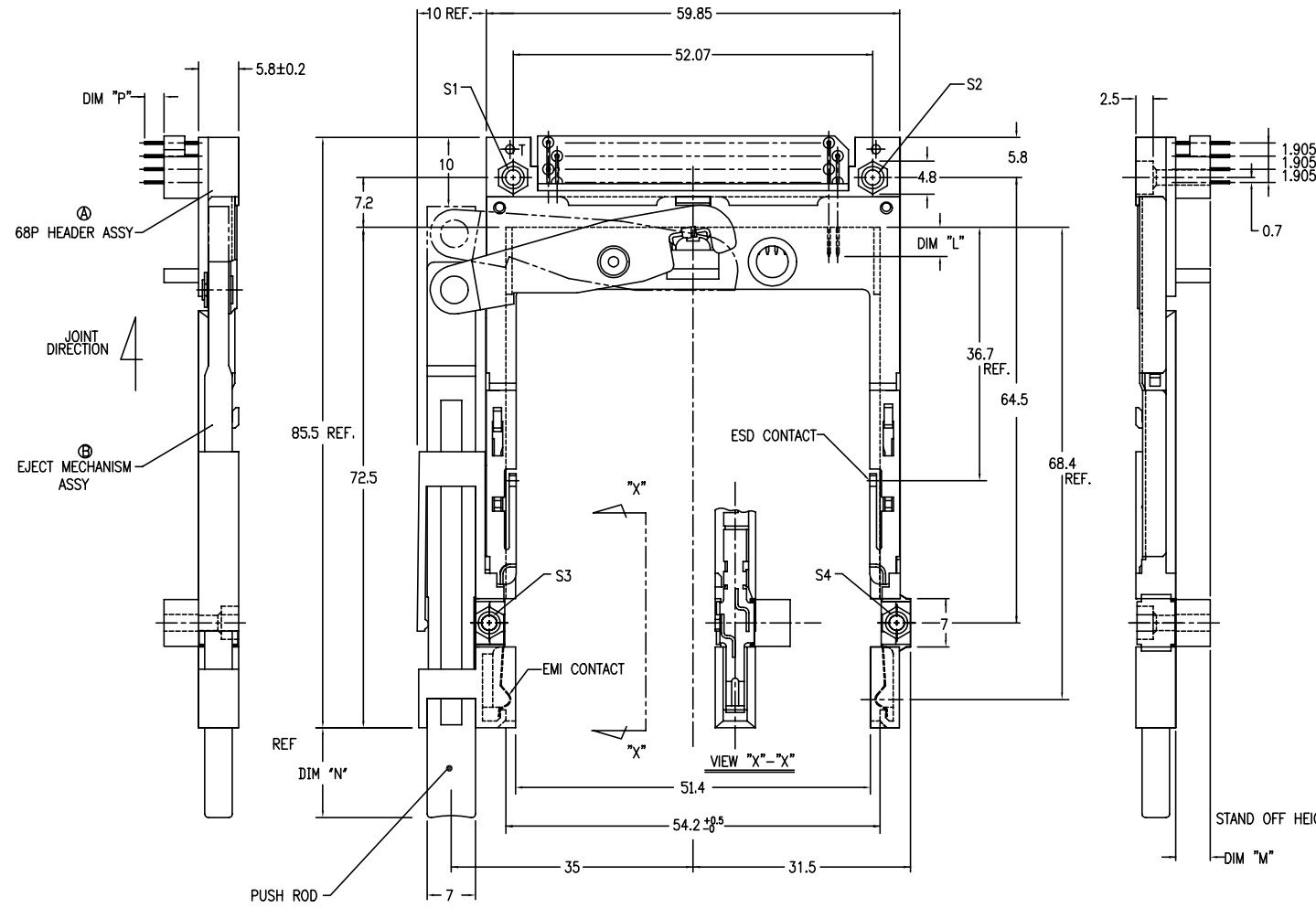
| SHEET INDEX | ISSUE | SH NO. | MAT | DR | DATE | CUSTOMER COPY | TITLE | SCALE | SIZE | DWG. NO. | REV | SHEET |
|-------------|-------|--------|------------|--------|--------|---------------|--|-------|------|----------|-----|-------|
| | | | SEE NOTE ④ | T. Ino | 8/8/97 | | 68P EJECTOR HEADER ASSY FOR TYPE I/II/III (FOR 5.0V) | 2/1 | C | 92193 | V | 5 of |
| LINEAR | | | FINISH | CHK | 8/8/97 | | | | | | | |
| ANGLES | | | SEE NOTE ⑤ | APPD | | | | | | | | |

DF-003A REV C

DO NOT SCALE PRINT THIS INFORMATION IS CONFIDENTIAL AND IS DISCLOSED TO YOU ON CONDITION THAT NO FURTHER DISCLOSURE IS MADE BY YOU TO OTHER THAN BERG PERSONNEL WITHOUT WRITTEN AUTHORIZATION FROM BERG ELECTRONICS JAPAN K.K.

| PRODUCT NO. | |
|-----------------------|---|
| 92193-120CA/120CAH/LF | △ |
| 92193-120FA/120FALF | △ |
| 92193-130CA/130CALF | △ |
| 92193-130CAH/130CAHLF | △ |
| 92193-140CA/140CALF | △ |
| 92193-150CA/150CALF | △ |

| REVISIONS | | | | |
|-----------|-----------------------------------|----------|------|----------|
| REV | DESCRIPTION | ECN | BY | DATE |
| A | RELEASED | J30022 | N.T | 1/19/93 |
| B | REVISED | J40163 | M.K | 5/26/94 |
| C | REVISED | V40840 | M.K | 7/ 5/94 |
| D | REVISED | V32120 | M.K | 2/27/94 |
| E | REVISED | J40349 | M.K | 1/9/95 |
| F | REVISED | J50242 | M.K | 9/18/95 |
| G | REVISED (ADDED -130CA -130CAH) | J70134 | K.S | 8/8/97 |
| H | REVISED | N90076 | M.K | 7/22/99 |
| T | REVISED (ADDED -*****F) | N05-0127 | WB J | 05/18/05 |
| U | | | | |
| V | | | | |

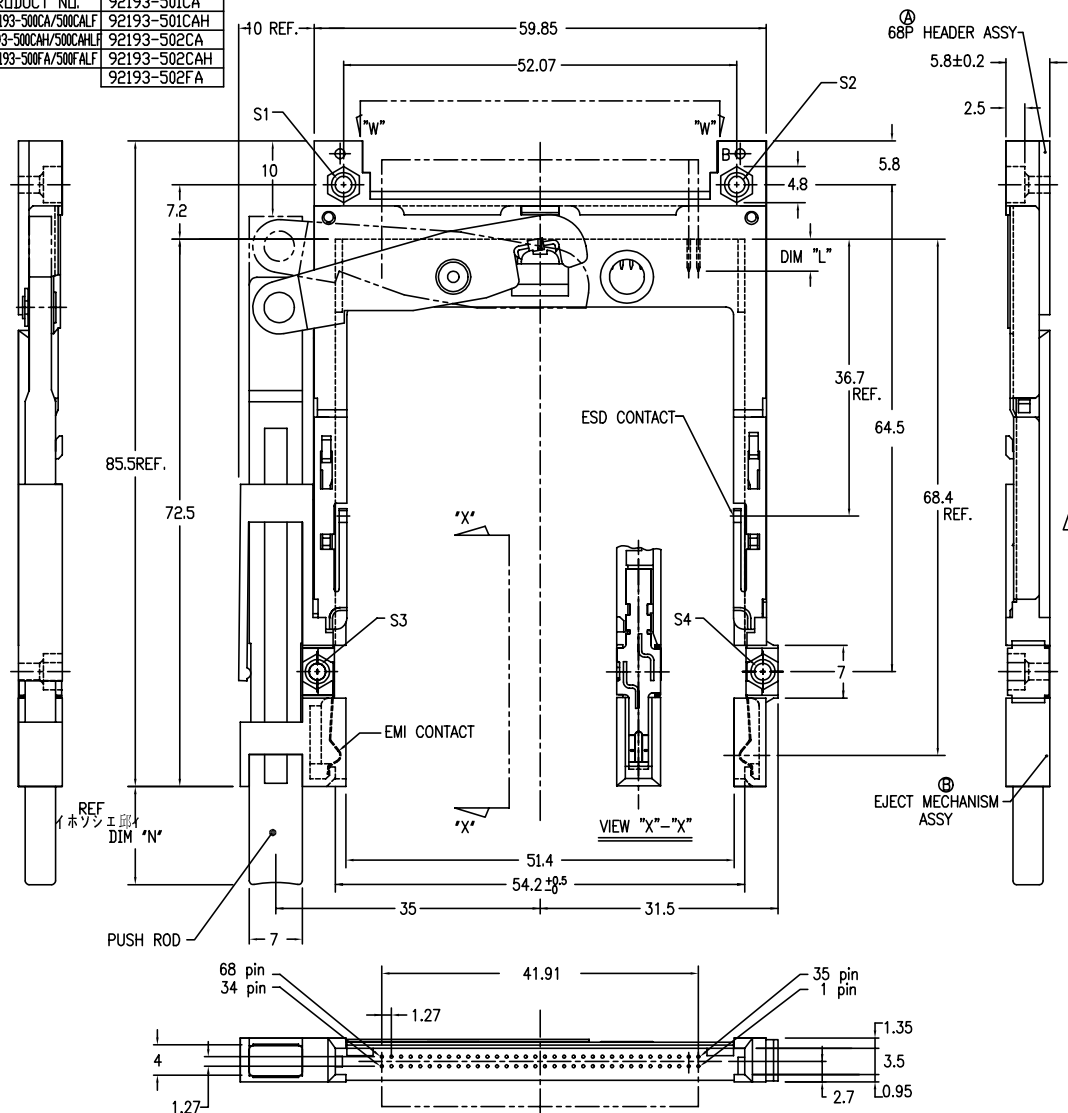


- NOTE
- EJECT FORCE 3.5Kg MAX.
 - ASSY PROCESS
2.1 TO MOUNT PART ① ON PWB WITH SCREW (S1,S2) AND SOLDER.
2.2 TO JOINT PART ② INTO PART ①, THEN FIX PART ② WITH 2 SCREWS (S3,S4).
 - EJECT TRAVEL 8.0mm
- ④ MATERIAL
- PART ① (HEADER ASSY)
HOUSING : LCP UL94V-0
PIN : PHOSPHOR BRONZE
 - PART ② (EJECT MECHANISM ASSY)
GUIDE : POLYPHTHARAMID UL94V-0 BLACK
PUSH ROD : FLAME RETARDANT UL94V-0
PLATE : STAINLESS
EMI CONTACT : PHOSPHOR BRONZE
STANDOFF : ZINC ALLOYS DIE CASTING
- ⑤ FINISH
- PIN
UNDER PLATING : 0.5µm MIN. Ni
CONTACT AREA : 0.1µm MIN. Au OVER 0.5µm MIN. Pd-Ni
SOLDER TAIL : 2.5µm MIN. Sn-Pb
OR 2.5µm MIN. PURE Sn.(FOR -*****LF)
 - EMI CONTACT
UNDER PLATING : 2.0µm MIN. Ni
CONTACT AREA : 0.5µm MIN. Au
 - STAND OFF : 3 ~5µm Ni, OVER 5 ~10µm Cu.
6. PIN NO.
- | PIN No. | DIM "L" | | |
|---------|----------|---------|----------|
| | 4.25±0.1 | 3.5±0.1 | 5.0±0.1 |
| OTHERS | 36.67 | 1.17,34 | 35.51,68 |
7. SEE TA-946 FOR PCB LAYOUT.
8. SEE 92140 FOR DETAILED HDR DIMENSION.
9. SEE SHEET1,2 REGARDING COMPONENTS.
10. GENERAL TOLERANCE : ±0.3.

| SHEET INDEX | ISSUE | | MAT | DR | DATE | CUSTOMER COPY | TITLE | SCALE | SIZE | DWC. NO. | REV | SHEET |
|-------------|--------|--|------------|------------|---------|---------------|--|-------|------|----------|-----|--------|
| | SH NO. | | | | | | | | | | | |
| | | | | M.Hasegawa | 7/22/99 | | 68P EJECTOR HEADER ASSY FOR TYPE I/II/III (FOR 5.0V) | 2/1 | C | 92193 | V | 6 of 6 |
| | | | SEE NOTE ④ | M.Kajura | 7/22/99 | | | | | | | |
| | | | SEE NOTE ⑤ | | | | | | | | | |

| | |
|-------------------------|--------------|
| PRODUCT NO. | 92193-501CA |
| △ 92193-500CA/500CALF | 92193-501CAH |
| △ 92193-500CAH/500CAHLF | 92193-502CA |
| △ 92193-500FA/500FALF | 92193-502CAH |
| | 92193-502FA |

| REVISED | | | | REVISIONS | | | | | |
|---------|--------------------------|----------|-----|-----------|-----|-------------|--------|-----|----------|
| K | REVISED | V91595 | M.K | 11/11/99 | REV | DESCRIPTION | ECN | BY | DATE |
| T | REVISED (ADDED -*****LF) | N05-0127 | WB | J05/18/05 | D | REVISED | V40840 | M.K | 7/5/94 |
| U | | | | | E | REVISED | V32120 | M.K | 12/27/94 |
| V | | | | | F | REVISED | J40349 | M.K | 1/9/95 |
| | | | | | G | REVISED | J50242 | M.K | 9/18/95 |
| | | | | | H | REVISED | V60956 | M.K | 7/29/96 |
| | | | | | J | REVISED | J70134 | K.S | 8/8/97 |



- NOTE
- EJECT FORCE 3.5Kg Max.
 - ASSY PROCESS
2.1 TO MOUNT PART ④ ON PWB WITH SCREW (S1,S2) AND SOLDER.
2.2 TO JOINT PART ⑤ INTO PART ④, THEN FIX PART ⑤ WITH 2 SCREWS (S3,S4).
 - EJECT TRAVEL 8.0mm
- ④ MATERIAL
- PART ④ (HEADER ASSY)
HOUSING : LCP UL94V-0
PIN : PHOSPHOR BRONZE
 - PART ⑤ (EJECT MECHANISM ASSY)
GUIDE : POLYPHTHARAMID UL94V-0 BLACK
PUSH ROD : FLAME RETARDANT UL94V-0
PLATE : STAINLESS
EMI CONTACT : PHOSPHOR BRONZE
 - OPTIONAL HOLD-DOWN : BRASS

- ⑤ FINISH 5.1 PIN
- 5.2 EMI CONTACT
UNDER PLATING : 0.5µm MIN. Ni
CONTACT AREA : 0.1µm MIN. Au OVER 0.5µm MIN. Pd-Ni
SOLDER TAIL : 2.5µm MIN. Sn-Pb OR 2.5µm MIN. PURE Sn.(FOR -*****LF)
- 5.3 OPTIONAL HOLD-DOWN : 2.5µm MIN. PURE Sn
6. PIN NO.

| PIN No. | DIM "L" | |
|---------|----------|-----------|
| | OTHERS | 36.67 |
| | 4.25±0.1 | 3.5±0.1 |
| | 5.0±0.1 | 1.17, 3.4 |
| | | 35.51, 68 |

- SEE TA-946 FOR PCB LAYOUT.
- SEE 92140 FOR DETAILED HDR DIMENSION.
- SEE SHEET 1,2 REGARDING COMPONENTS.
- GENERAL TOLERANCE : ±0.3.

PRODUCT NO.
92193-500CA/500CALF
92193-500CAH/500CAHLF
92193-500FA/500FALF

R/A

CO-PLANARITY 0±0.05

SMT STAGGERED

VIEW "W"-"W"(4/1)

SECTION "Z"-"Z"(4/1)

CO-PLANARITY 0±0.15

SMT IN LINE

VIEW "W"-"W"(4/1)

SECTION "Z"-"Z"(4/1)

CO-PLANARITY 0±0.075

SMT IN LINE

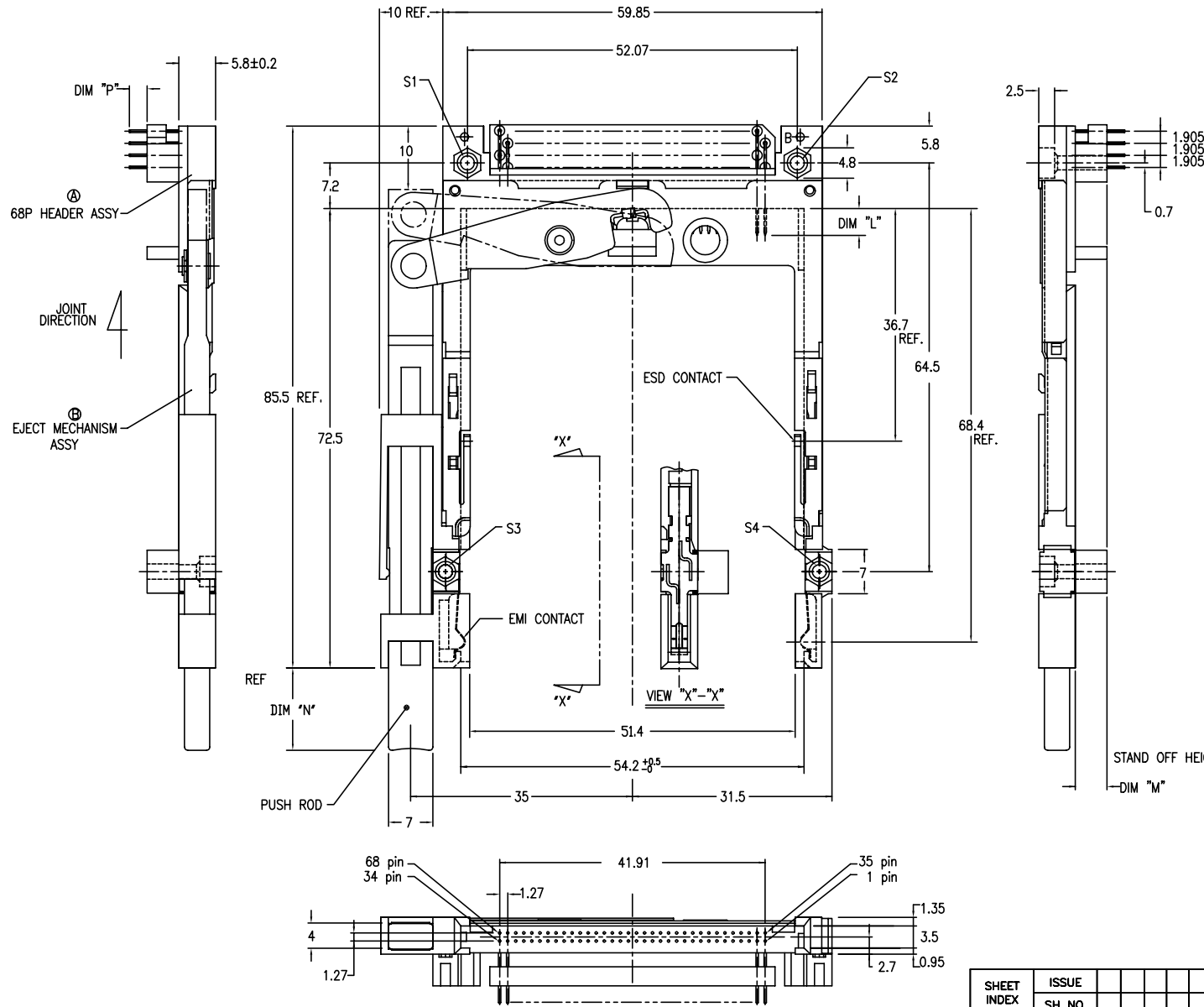
VIEW "W"-"W"(4/1)

SECTION "Z"-"Z"(4/1)

| SHEET INDEX | ISSUE SH NO. | MAT | DR | DATE | CUSTOMER COPY | TITLE | SCALE | SIZE | DWG. NO. | REV | SHEET |
|-------------|--------------|------------|-----------------|----------|---------------|--|-------|------|----------|-----|--------|
| | | SEE NOTE ④ | T. Ino | 11/11/99 | | 68P EJECTOR HEADER ASSY FOR TYPE I/II/III (FOR 5.0V) | 2/1 | C | 92193 | V | 7 of 7 |
| | | SEE NOTE ⑤ | ENGR M.Ka.jiura | 11/11/99 | | | | | | | |
| | | | CHK | | | | | | | | |
| | | | APPD | | | | | | | | |

| PRODUCT NO. | |
|---------------------|---|
| 92193-520CA/520CALF | △ |
| 92193-540CA/540CALF | △ |
| 92193-550CA/550CALF | △ |

| REVISIONS | | | | |
|-----------|--------------------------|----------|-----|-----------|
| REV | DESCRIPTION | ECN | BY | DATE |
| A | RELEASED | J30022 | N.T | 1/19/93 |
| B | REVISED | J30128 | M.N | 4/27/93 |
| C | REVISED | J40163 | M.K | 5/26/94 |
| D | REVISED | V40840 | M.K | 7/ 5/94 |
| E | REVISED | V32120 | M.K | 12/27/94 |
| F | REVISED | J40349 | M.K | 1/9/94 |
| G | REVISED | J50242 | M.K | 9/18/95 |
| T | REVISED (ADDED -*****LF) | N05-0127 | WB | J05/18/05 |
| U | | | | |
| V | | | | |



NOTE

- EJECT FORCE 3.5Kg MAX.
- ASSY PROCESS
2.1 TO MOUNT PART (A) ON PWB WITH SCREW (S1,S2) AND SOLDER.
2.2 TO JOINT PART (B) INTO PART (A), THEN FIX PART (B) WITH 2 SCREWS (S3,S4)
- EJECT TRAVEL 8.0mm

④ MATERIAL

- PART (A) (HEADER ASSY)
HOUSING : LCP UL94V-0
PIN : PHOSPHOR BRONZE
- PART (B) (EJECT MECHANISM ASSY)
GUIDE : POLYPHTHARAMID UL94V-0 BLACK
PUSH ROD : FLAME RETARDANT UL94V-0
PLATE : STAINLESS
EMI CONTACT : PHOSPHOR BRONZE
STANDOFF : ZINC ALLOYS DIE CASTING

⑤ FINISH

- PIN
UNDER PLATING : 0.5µm MIN. Ni
CONTACT AREA : 0.1µm MIN. Au OVER 0.5µm MIN. Pd-Ni
SOLDER TAIL : 2.5µm MIN. Sn-Pb
OR 2.5µm MIN. PURE Sn.(FOR -*****LF)
- EMI CONTACT
UNDER PLATING : 2.0µm MIN. Ni
CONTACT AREA : 0.5µm MIN. Au
- STAND OFF : 3 ~5µm Ni, OVER 5 ~10µm Cu.

6. PIN NO.

| PIN No. | DIM "L" | | |
|---------|----------|----------|-----------|
| | 4.25±0.1 | 3.5±0.1 | 5.0±0.1 |
| OTHERS | 36.67 | 1.17, 34 | 35.51, 68 |

STAND OFF HEIGHT

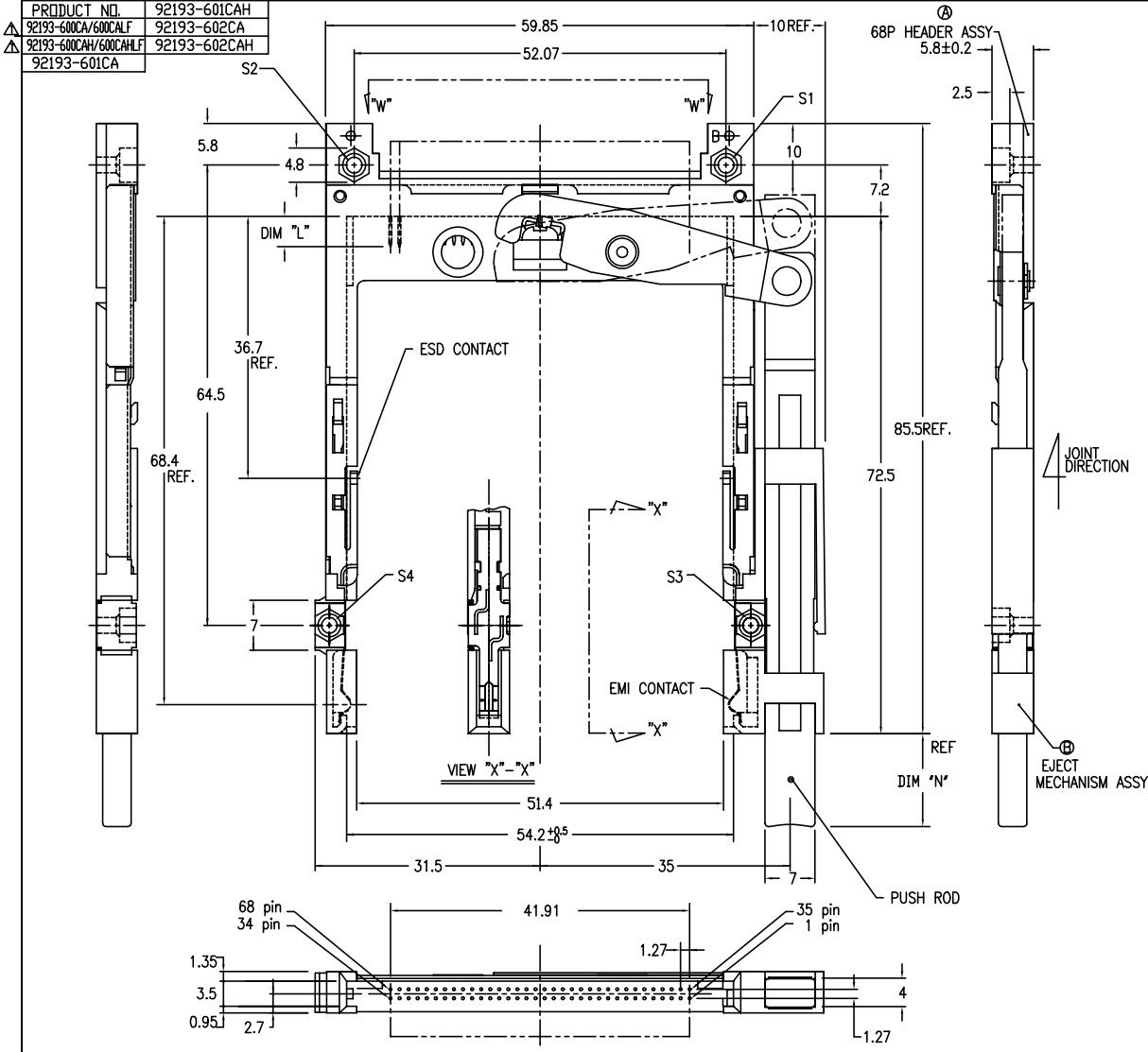
- SEE TA-946 FOR PCB LAYOUT.
- SEE 92140 FOR DETAILED HDR DIMENSION.
- SEE SHEET 1,2 REGARDING COMPONENTS.
- GENERAL TOLERANCE : ±0.3.

DF-003A REV C
DO NOT SCALE PRINT THIS INFORMATION IS CONFIDENTIAL AND IS DISCLOSED TO YOU ON CONDITION THAT NO FURTHER DISCLOSURE IS MADE BY YOU TO OTHER THAN BERG PERSONNEL WITHOUT WRITTEN AUTHORIZATION FROM BERG ELECTRONICS JAPAN K.K.

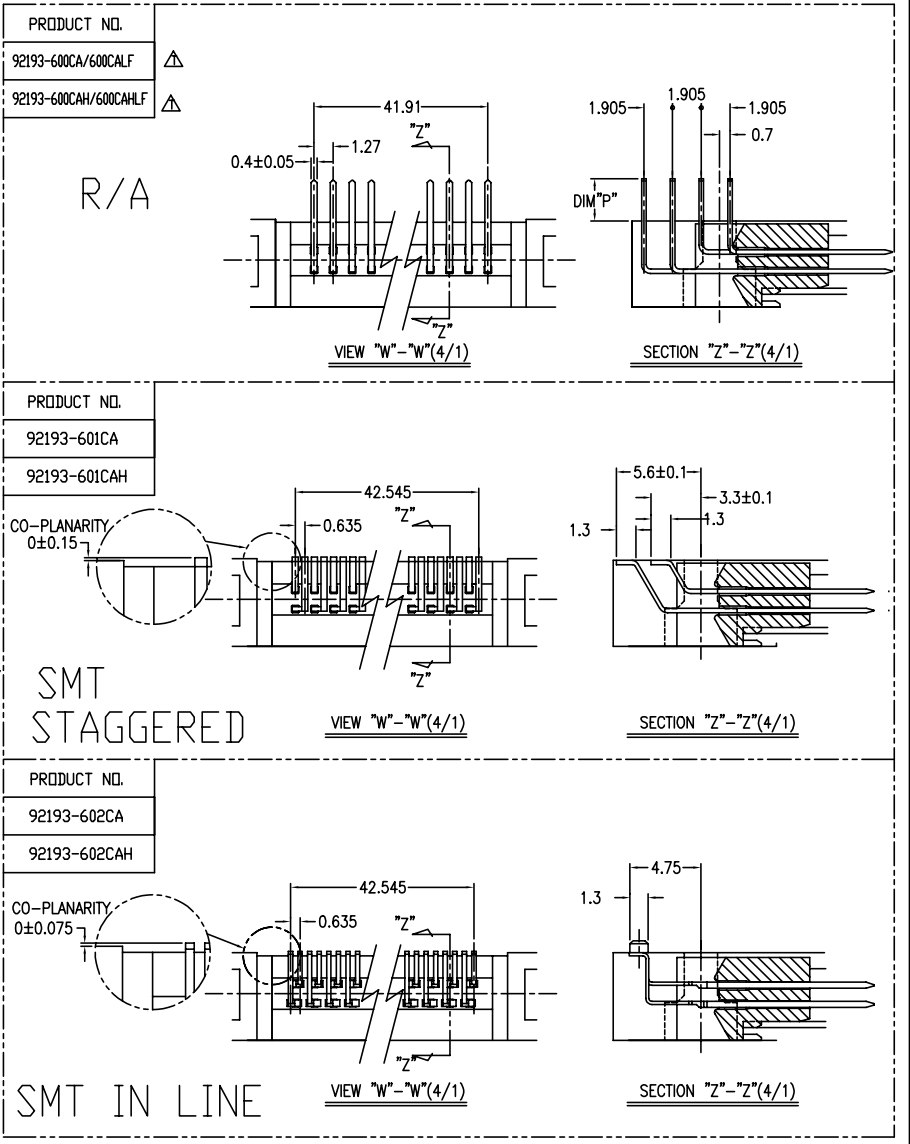
| SHEET INDEX | ISSUE SH NO. | MAT | DR | DATE | CUSTOMER COPY | TITLE | SCALE | SIZE | DWG. NO. | REV SHEET |
|-------------|--------------|------------|------------------|---------|---------------|--|-------|------|----------|-----------|
| | | | T. Umeta | 9/18/95 | | 68P EJECTOR HEADER ASSY FOR TYPE I/II/III (FOR 5.0V) | 2/1 | C | 92193 | V 8 of |
| | | SEE NOTE ④ | ENGR M. Ka. jura | 9/18/95 | | | | | | |
| | | SEE NOTE ⑤ | CHK | | | | | | | |
| | | | APPD | | | | | | | |

| | |
|-----------------------|--------------|
| PRODUCT NO. | 92193-601CAH |
| 92193-600CA/600CALF | 92193-602CA |
| 92193-600CAH/600CAHLF | 92193-602CAH |
| 92193-601CA | |

| T | REVISED (ADDED -*****LF) | N05-0127/WB | J05/18/05 | REVISIONS | | | | |
|-----|--------------------------|-------------|-----------|-----------|--|--|--|--|
| REV | DESCRIPTION | ECN | BY | DATE | | | | |
| D | REVISED | V40840 | M.K | 7/5/94 | | | | |
| E | REVISED | V32120 | M.K | 12/27/94 | | | | |
| F | REVISED | J40349 | M.K | 1/9/95 | | | | |
| G | REVISED | J50242 | M.K | 9/18/95 | | | | |
| H | REVISED | J70134 | K.S | 8/8/97 | | | | |



- NOTE
- EJECT FORCE 3.5kg MAX.
 - ASSY PROCESS
 - TO MOUNT PART ④ ON PWB WITH SCREW (S1,S2) AND SOLDER.
 - TO JOINT PART ④ INTO PART ④, THEN FIX PART ④ WITH 2 SCREWS (S3,S4).
 - EJECT TRAVEL 8.0mm
- ④ MATERIAL (HEADER ASSY)
- | | |
|---------|-------------------|
| HOUSING | : LCP UL94V-0 |
| PIN | : PHOSPHOR BRONZE |
- 4.2 PART ④ (EJECT MECHANISM ASSY)
- | | |
|-------------|--------------------------------|
| GUIDE | : POLYPHTHARAMID UL94V-0 BLACK |
| PUSH ROD | : FLAME RETARDANT UL94V-0 |
| PLATE | : STAINLESS |
| EMI CONTACT | : PHOSPHOR BRONZE |
- 4.3 OPTIONAL HOLD-DOWN : BRASS
- ⑤ FINISH 5.1 PIN
- | | |
|---------------|---|
| UNDER PLATING | : 0.5µm MIN. Ni |
| CONTACT AREA | : 0.1µm MIN. Au OVER 0.5µm MIN. Pd-Ni |
| SOLDER TAIL | : 2.5µm MIN. Sn-Pb OR 2.5µm MIN. PURE Sn.(FOR -*****LF) |
- 5.2 EMI CONTACT
- | | |
|---------------|-----------------|
| UNDER PLATING | : 2.0µm MIN. Ni |
| CONTACT AREA | : 0.5µm MIN. Au |
- 5.3 OPTIONAL HOLD-DOWN : 2.5µm MIN. PURE Sn
6. PIN NO.
- | PIN No. | DIM "L" | |
|---------|----------|-----------|
| | OTHERS | 36.67 |
| | 4.25±0.1 | 3.5±0.1 |
| | | 5.0±0.1 |
| | | 1.17, 34 |
| | | 35.51, 68 |
- SEE TA-946 FOR PCB LAYOUT.
 - SEE 92140 FOR DETAILED HDR DIMENSION.
 - SEE SHEET 1.2 REGARDING COMPONENTS.
 - GENERAL TOLERANCE : ±0.3

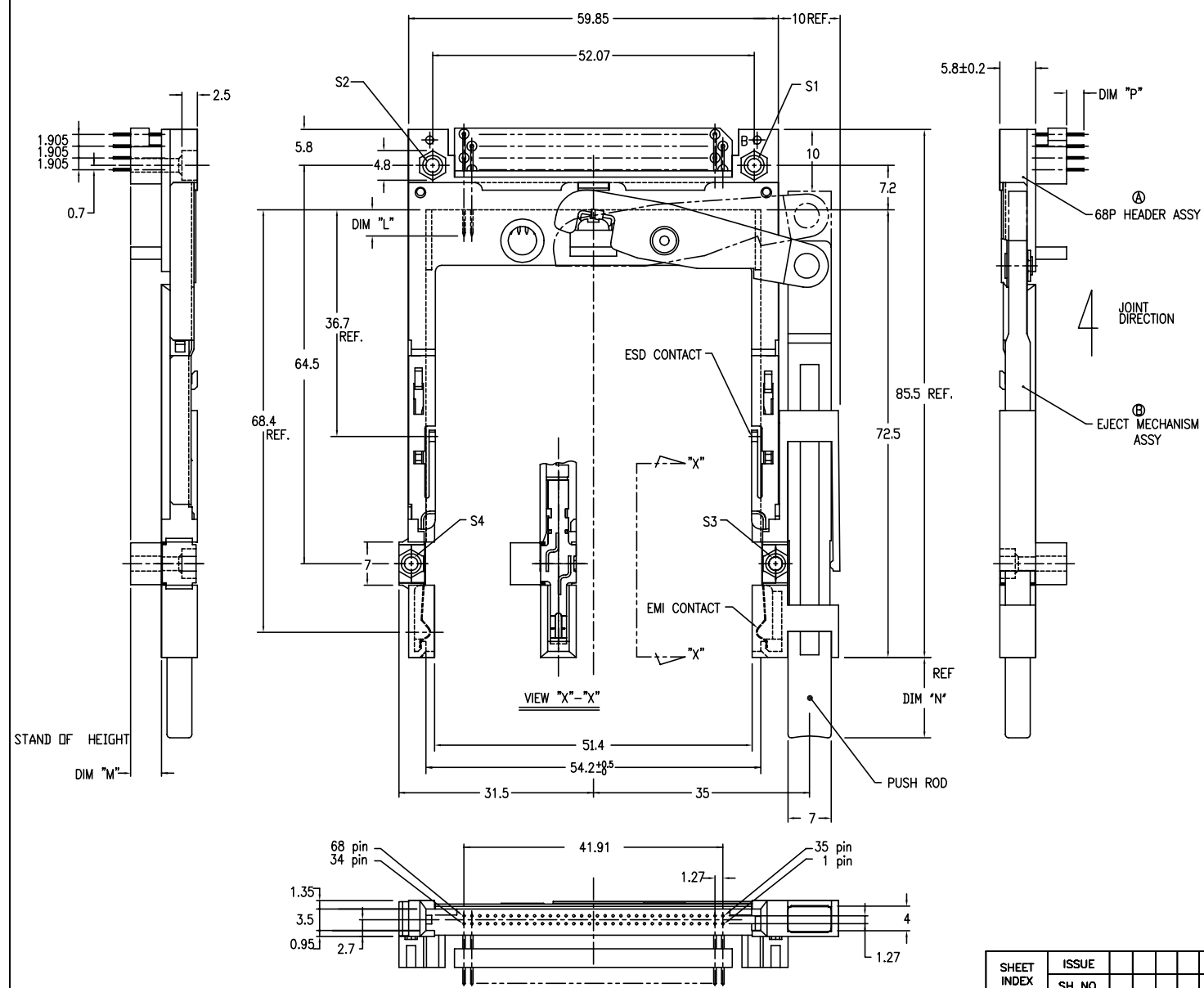


| | |
|---------------|--|
| DF-003A REV C | DO NOT SCALE PRINT THIS INFORMATION IS CONFIDENTIAL AND IS DISCLOSED TO YOU ON CONDITION THAT NO FURTHER DISCLOSURE IS MADE BY YOU TO OTHER THAN BERG PERSONNEL WITHOUT WRITTEN AUTHORIZATION FROM BERG ELECTRONICS JAPAN K.K. |
|---------------|--|

| SHEET INDEX | ISSUE | SH NO. | TOLERANCES UNLESS OTHERWISE SPECIFIED | MAT | DR | ENGR | DATE | CUSTOMER COPY | TITLE | SCALE | SIZE | DWG. NO. | REV | SHEET |
|-------------|-------|--------|---------------------------------------|-----|--------|-----------|--------|---------------|--|-------|------|----------|-----|--------|
| | | | | | T. Uno | K. Suzuki | 8/8/97 | | 68P EJECTOR HEADER ASSY FOR TYPE I/II/III (FOR 5.0V) | 2/1 | C | 92193 | V | 9 of 9 |

| PRODUCT NO. |
|---------------------|
| 92193-620CA/620CALF |
| 92193-640CA/640CALF |
| 92193-650CA/650CALF |

| REVISIONS | | | | |
|-----------|--------------------------|----------|------|----------|
| REV | DESCRIPTION | ECN | BY | DATE |
| A | RELEASED | J30022 | N.T | 1/19/93 |
| B | REVISED | J40163 | M.K | 5/26/94 |
| C | REVISED | V40840 | M.K | 7/ 5/94 |
| D | REVISED | V32120 | M.K | 8/27/94 |
| E | REVISED | J40349 | M.K | 1/6/95 |
| F | REVISED | J50242 | M.K | 9/18/95 |
| T | REVISED (ADDED -*****LF) | N05-0127 | NB J | 05/18/05 |
| U | | | | |
| V | | | | |



NOTE

- EJECT FORCE 3.5Kg MAX.
- ASSY PROCESS
 - TO MOUNT PART ① ON PWB WITH SCREW (S1,S2) AND SOLDER.
 - TO JOINT PART ② INTO PART ①, THEN FIX PART ② WITH 2 SCREWS (S3,S4).
- EJECT TRAVEL 8.0mm

④ MATERIAL

- PART ① (HEADER ASSY)
 - HOUSING : LCP UL94V-0
 - PIN : PHOSPHOR BRONZE
- PART ② (EJECT MECHANISM ASSY)
 - GUIDE : POLYPHTHARAMID UL94V-0 BLACK
 - PUSH ROD : FLAME RETARDANT UL94V-0
 - PLATE : STAINLESS
 - EMI CONTACT : PHOSPHOR BRONZE
 - STANDOFF : ZINC ALLOYS DIE CASTING

⑤ FINISH

- PIN
 - UNDER PLATING : 0.5μm MIN. Ni
 - CONTACT AREA : 0.1μm MIN. Au OVER 0.5μm MIN. Pd-Ni
 - SOLDER TAIL : 2.5μm MIN. Sn-Pb OR 2.5μm MIN. PURE Sn.(FOR -*****LF)
- EMI CONTACT
 - UNDER PLATING : 2.0μm MIN. Ni
 - CONTACT AREA : 0.5μm MIN. Au
- STAND OFF : 3 ~5μm Ni, OVER 5 ~10μm Cu.

6. PIN NO.

| PIN No. | DIM "L" | | |
|---------|----------|---------|----------|
| | OTHERS | 36.67 | 35.51.68 |
| | 4.25±0.1 | 3.5±0.1 | 5.0±0.1 |

- SEE TA-946 FOR PCB LAYOUT.
- SEE 92140 FOR DETAILED HDR DIMENSION.
- SEE SHEET 1,2 REGARDING COMPONENTS.
- GENERAL TOLERANCE : ±0.3

STAND OFF HEIGHT
DIM "M"

DF-003A REV C
DO NOT SCALE PRINT THIS INFORMATION IS CONFIDENTIAL AND IS DISCLOSED TO YOU ON CONDITION THAT NO FURTHER DISCLOSURE IS MADE BY YOU TO OTHER THAN BERG PERSONNEL WITHOUT WRITTEN AUTHORIZATION FROM BERG ELECTRONICS JAPAN K.K.

| SHEET INDEX | ISSUE | | MAT | DR | DATE | CUSTOMER COPY | TITLE | SCALE | SIZE | DWS. NO. | REV | SHEET |
|-------------|--------|--|------------|-------------|---------|---------------|--|-------|------|----------|-----|----------|
| | SH NO. | | | | | | | | | | | |
| | | | | T. Umeta | 9/18/95 | | 68P EJECTOR HEADER ASSY FOR TYPE I/II/III (FOR 5.0V) | 2/1 | C | 92193 | V | 10 of 10 |
| | | | SEE NOTE ④ | M. Ka. jura | 9/18/95 | | | | | | | |
| | | | SEE NOTE ⑤ | | | | | | | | | |