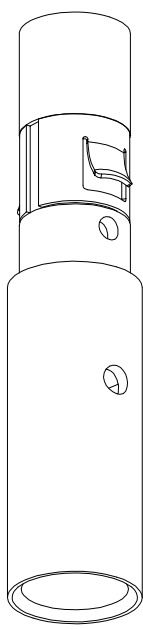
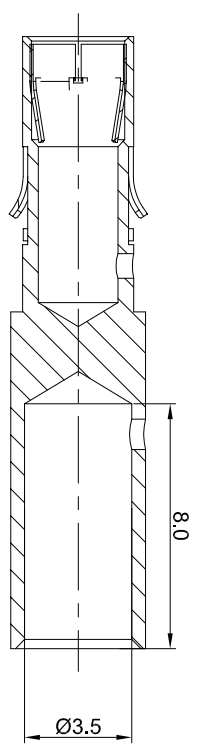
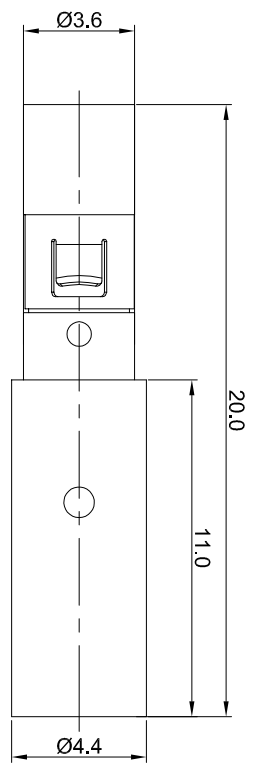


REVISIONS				
REV	ECO	DESCRIPTION	DATE	BY APPR
A1	-	FIRST RELEASE	May/27/2017	Tom Tommy
A2	-	Modify the current rating	Jul,10,2017	White Tommy



P/N	CONTACT PLATING(MATING AREA)
MS10B23T	TIN PLATING OVER NICKEL.
MS10B23S	SILVER PLATING OVER NICKEL.
MS10B23F	GOLD FLASH PLATING OVER NICKEL.
MS10B23G5	5µ" GOLD PLATING OVER NICKEL.
MS10B23G10	10µ" GOLD PLATING OVER NICKEL.
MS10B23G15	15µ" GOLD PLATING OVER NICKEL.
MS10B23G30	30µ" GOLD PLATING OVER NICKEL.

- NOTES : (UNLESS OTHERWISE SPECIFIED)
- MATERIAL :
 - CONTACT BODY : COPPER ALLOY.
 - POSITIONING CLIP : COPPER ALLOY.
 - SPECIFICATIONS :
 - CURRENT RATING : 35A(MAX).
 - TERMINATION TYPE : CRIMPING.
 - SUITABLE SOCKET : MP10B23xx.
 - ROHS COMPLIANT.
 - ALL DIMENSIONS ARE FOR REFERENCE USE ONLY.

QUANTITY	PART NUMBER	DESCRIPTION	ITEM
MATERIALS LIST			

UNLESS OTHERWISE SPECIFIED		DRAWN: White		DATE: Jul,10,2017	
1) All dimensions are in millimeters.		CHECKER:			
2) Tolerances are as follows:		ENGINEER:			
1 Pt. DEC 20.30		APPROVAL:			
3 Pt. DEC 20.08		CUSTOMER:			
3) Note reference =		MATERIAL SPECIFICATIONS:			
PROCESS SPECIFICATIONS:		THIS DRAWING IS SUPPLEMENTARY TO THE DRAWING OF THE CONTACT. ALL DIMENSIONS AND PERFORMANCE DATA ARE THE PROPERTY OF AMPHENOL CORPORATION. NO PARTS OF REPRODUCTION ARE PERMITTED. ALL MANUFACTURING VARIATIONS		SCALE: NONE	
NEXT ASSY:		ECONOMATE SOCKET CONTACT		MACHINE: FEMALE CONTACT 2.5mm	

Amphenol Sine Systems - www.amphenol-sine.com 44724 Morley Drive Clinton Township, MI 48036		SIZE: B TYPE: C- DWG NO: MS10B23xx SCALE: NONE	SHEET: 1 OF 1 REV: A2 SH: 1 OF: 1
---	--	---	--

TITLE: ECO-MATE MACHINE FEMALE CONTACT 2.5mm

DWG NO: MS10B23xx

REV: A2

SH: 1

OF: 1