

292304-1 ✓ ACTIVE

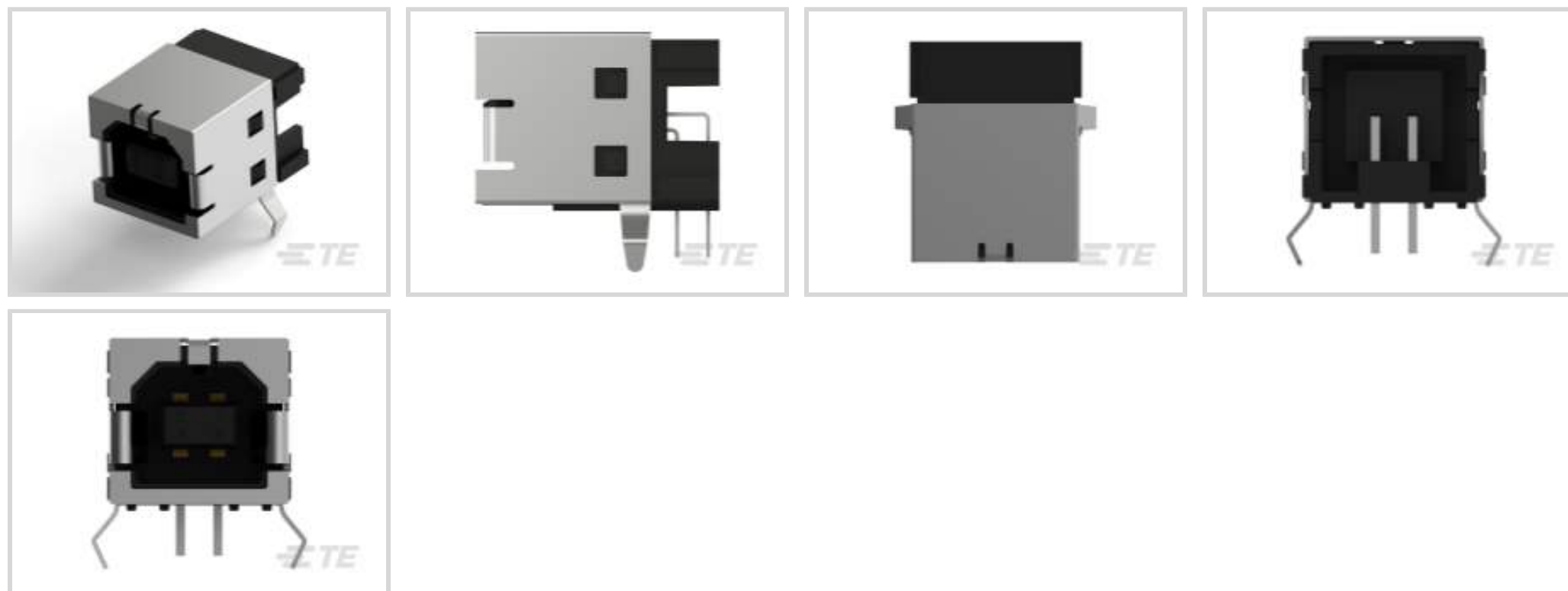
TE Internal #: 292304-1

USB Connectors, B, 2.0, Standard Profile, Receptacle, 1 Port, Top, Right Angle, Box & Tray / Tray, Flush, Through Hole - Solder, Cable-to-Board, 1500

[View on TE.com >](#)



Connectors > Audio & Video Connectors > USB Connectors



USB Adapter Type: **B**

USB Version: **2.0**

Connector Profile: **Standard**

Connector & Housing Type: **Receptacle**

Number of Ports: **1**

## Features

### Product Type Features

|                                   |                       |
|-----------------------------------|-----------------------|
| Integral Locking Latch            | Without               |
| USB Adapter Type                  | B                     |
| USB Version                       | 2.0                   |
| Connector & Housing Type          | Receptacle            |
| Connector System                  | Cable-to-Board        |
| Connector & Contact Terminates To | Printed Circuit Board |
| USB Connector Type                | USB 2.0 Type-B        |

### Configuration Features

|                     |   |
|---------------------|---|
| Number of Ports     | 1 |
| Number of Positions | 4 |

### Body Features

|                        |        |
|------------------------|--------|
| Offset                 | 0 mm   |
| Shell Plating Finish   | Bright |
| Shell Plating Material | Tin    |



|                   |          |
|-------------------|----------|
| Connector Profile | Standard |
|-------------------|----------|

### Contact Features

|  |   |
|--|---|
| Contact Mating Area Plating Material Thickness | .76 $\mu\text{m}$ [29.92 $\mu\text{in}$ ] |
| Contact Mating Area Plating Material           | Gold or Gold Flash over Palladium Nickel  |
| Contact Current Rating (Max)                   | 1 A                                       |

### Termination Features

|   |                       |
|---|-----------------------|
| Termination Post & Tail Length              | 3.01 mm[.119 in]      |
| Termination Method to Printed Circuit Board | Through Hole - Solder |

### Mechanical Attachment

|                          |             |
|--------------------------|-------------|
| Locking Feature          | With        |
| PCB Mount Location       | Top         |
| PCB Connector Seating    | Flush       |
| PCB Mount Retention Type | Kinked Legs |
| Connector Mounting Type  | Board Mount |

### Housing Features

|                    |                 |
|--------------------|-----------------|
| Housing Material   | Thermoplastic   |
| Housing Color      | Black           |
| Body Orientation   | Right Angle     |
| Centerline (Pitch) | 2.5 mm[.098 in] |

### Dimensions

|                             |                  |
|-----------------------------|------------------|
| PCB Thickness (Recommended) | 1.57 mm[.062 in] |
|-----------------------------|------------------|

### Usage Conditions

|                             |   |
|-----------------------------|---|
| Soldering Temperature (Max) | 260 $^{\circ}\text{C}$ [500 $^{\circ}\text{F}$ ]            |
| Mating Cycles (Max)         | 1500  |
| Operating Temperature Range | -55 – 85 $^{\circ}\text{C}$ [-67 – 185 $^{\circ}\text{F}$ ] |

### Operation/Application

|                     |        |
|---------------------|--------|
| Halogen Free        | No     |
| Circuit Application | Signal |

### Industry Standards

|                            |          |
|----------------------------|----------|
| Test Identification (TID)  | 60001134 |
| Moisture Sensitivity Level | 1        |
| Industry Standard          | USB 2.0  |



UL Flammability Rating UL 94V-0

**Packaging Features**

|                    |                  |
|--------------------|------------------|
| Packaging Quantity | 100              |
| Packaging Method   | Box & Tray, Tray |

**Product Compliance**

[For compliance documentation, visit the product page on TE.com>](#)

|   |   |
|---|---|
| EU RoHS Directive 2011/65/EU                  | Compliant   |
| EU ELV Directive 2000/53/EC                   | Compliant   |
| China RoHS 2 Directive MIIT Order No 32, 2016 | No Restricted Materials Above Threshold   |
| EU REACH Regulation (EC) No. 1907/2006        | Current ECHA Candidate List: JUNE 2023 (235)<br>Candidate List Declared Against: JUNE 2023 (235)<br>Does not contain REACH SVHC |
| Halogen Content                               | Not Low Halogen - contains Br or Cl > 900 ppm.  |
| Solder Process Capability                     | Wave solder capable to 265°C  |

Product Compliance Disclaimer

This information is provided based on reasonable inquiry of our suppliers and represents our current actual knowledge based on the information they provided. This information is subject to change. The part numbers that TE has identified as EU RoHS compliant have a maximum concentration of 0.1% by weight in homogenous materials for lead, hexavalent chromium, mercury, PBB, PBDE, DBP, BBP, DEHP, DIBP, and 0.01% for cadmium, or qualify for an exemption to these limits as defined in the Annexes of Directive 2011/65/EU (RoHS2). Finished electrical and electronic equipment products will be CE marked as required by Directive 2011/65/EU. Components may not be CE marked. Additionally, the part numbers that TE has identified as EU ELV compliant have a maximum concentration of 0.1% by weight in homogenous materials for lead, hexavalent chromium, and mercury, and 0.01% for cadmium, or qualify for an exemption to these limits as defined in the Annexes of Directive 2000/53/EC (ELV). Regarding the REACH Regulation, the information TE provides on SVHC in articles for this part number is based on the latest European Chemicals Agency (ECHA) 'Guidance on requirements for substances in articles' posted at this URL: <https://echa.europa.eu/guidance-documents/guidance-on-reach>

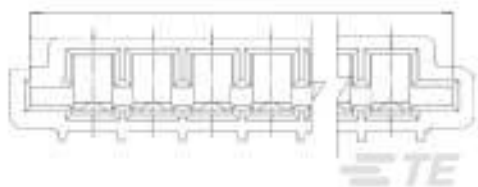
**Customers Also Bought**



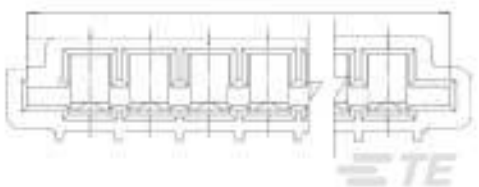
TE Part #1-2176050-2  
RLP73N 1E R15 5% 5K RL



TE Part #1470224-2  
HPI 2.5MM EMIX A'SSY V/T 2P



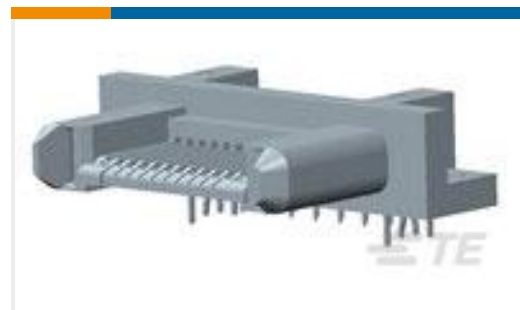
TE Part #6-487509-3  
TRIOMATE ASY V14P L=4.064,LDFR



TE Part #6-487509-8  
TRIOMATE ASY V19P L=4.064,LDFR



TE Part #8-1734774-4  
PCI EXP 2.3L 98 POS BLK G/F



TE Part #1982676-1  
Receptacle Assembly



TE Part #827200-1  
35P MIN D-FED KONTG

## Documents

### Product Drawings

[STD USB TYPE B, R/A, T/H](#)

English

### CAD Files

[3D PDF](#)

3D

Customer View Model

[ENG\\_CVM\\_CVM\\_292304-1\\_B.2d\\_dxf.zip](#)

English

Customer View Model

[ENG\\_CVM\\_CVM\\_292304-1\\_B.3d\\_igs.zip](#)

English

Customer View Model

[ENG\\_CVM\\_CVM\\_292304-1\\_B.3d\\_stp.zip](#)

English

By downloading the CAD file I accept and agree to the [Terms and Conditions](#) of use.

### Datasheets & Catalog Pages

[USB and Mini USB Datasheet 7-1773442-0](#)

English

### Product Specifications

[Application Specification](#)

English

### Product Environmental Compliance

[Product Compliance Document](#)

English

[Product Compliance Document](#)

English

### Agency Approvals

[UL Report](#)

English