

10 9 8 7 6 5 4 3 2 1

F

E

D

C

B

A

F

E

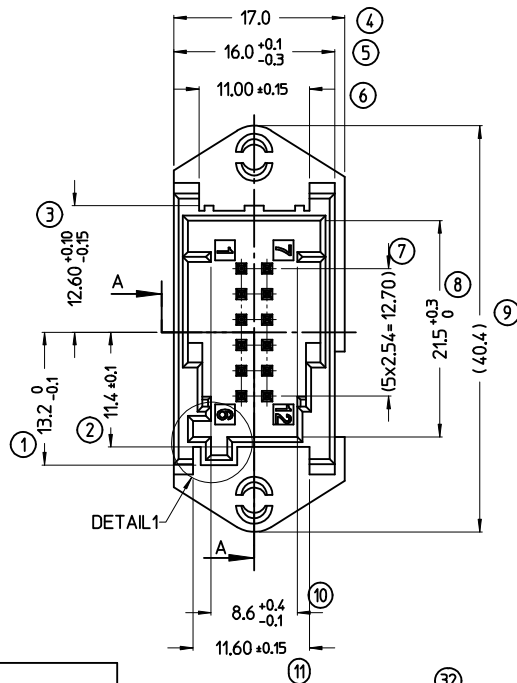
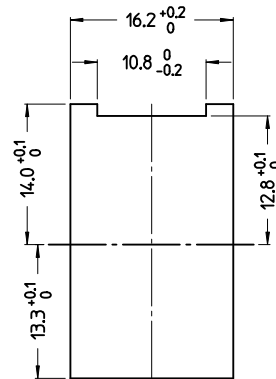
D

C

B

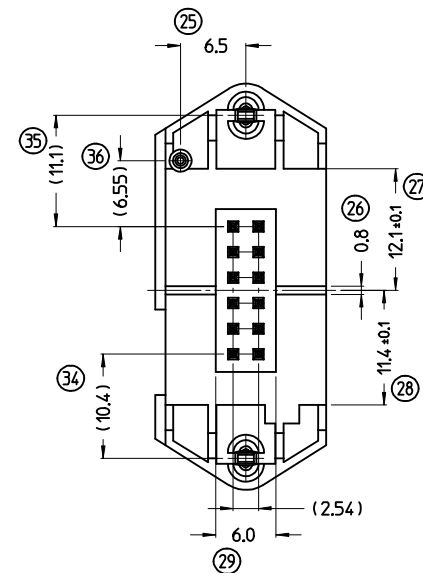
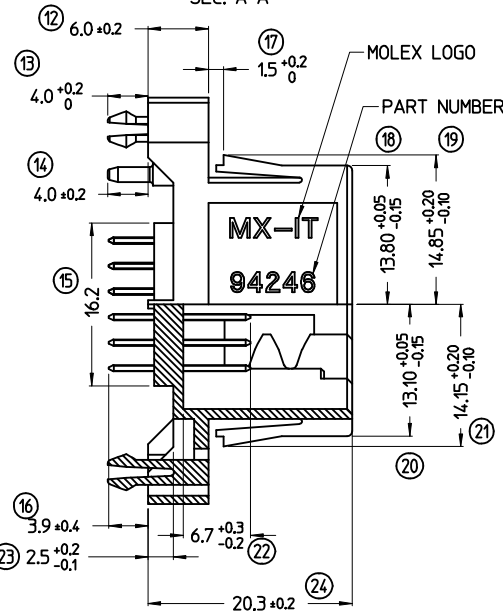
A

RECOMMENDED PANEL CUTOUT

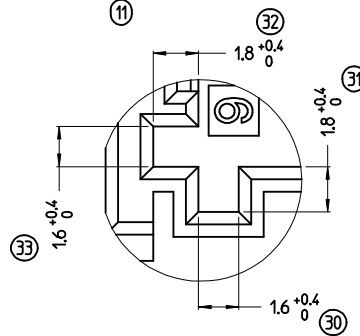
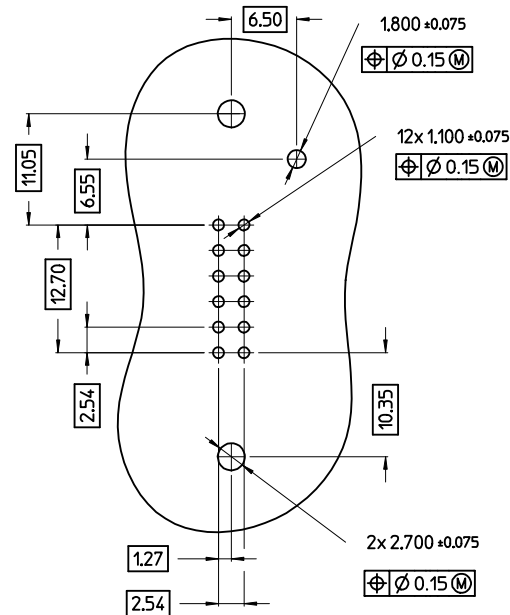


DETAIL 1

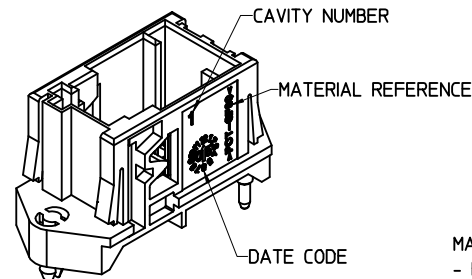
SEC. A-A



PCB LAYOUT (HEADER MOUNTING SIDE)  
PCB THICKNESS: 1.60 ± 0.15 mm



DETAIL 1  
SCALE 5:1



MATERIALS:  
- HOUSING: PCT 30% G.F. HB, BROWN COLOR  
- CONTACTS: BRASS PLATED

NOTES:  
[1] CHARACTERISTICS ACCORDING TO: PS-94246-001  
[2] PACKAGING CONFIGURATION: SEE DWG. PK-94246-001

STD. DESCR.: \*MOX HEADER BROWN W/BOARD LOCK 12 CKT\*

<b>NEW REVISION</b> EC NO: Z2007-0021 DRW:RDAGOSTI 2006/11/28 CHKD:LSANTUSSO 2006/11/29 APPR:GZUIN 2006/11/29	QUALITY SYMBOLS ▽=0 ▽=0	GENERAL TOLERANCES (UNLESS SPECIFIED)		DIMENSION STYLE MM ONLY		SCALE 2:1	DESIGN UNITS METRIC	FIRST ANGLE PROJECTION			
		4 PLACES ± --- ± ---	3 PLACES ± --- ± ---	2 PLACES ± 0.3 ± ---	1 PLACE ± 0.3 ± ---	DRAWN BY RDAGOSTI	DATE 2003/10/23	TITLE 12 CKT MOX HEADER BROWN VERSION WITH BOARD LOCK			
		ANGULAR ± ---°				CHECKED BY RSANDANO	DATE 2004/02/27	MOLEX INCORPORATED			
		DRAFT WHERE APPLICABLE MUST REMAIN WITHIN DIMENSIONS				APPROVED BY GZUIN	DATE 2004/02/27	MATERIAL NO. 94246-0012	DOCUMENT NO. SD-94246-001	SHEET NO. 1 OF 1	

9 8 7 6 5 4 3 2 1