

Product Specification



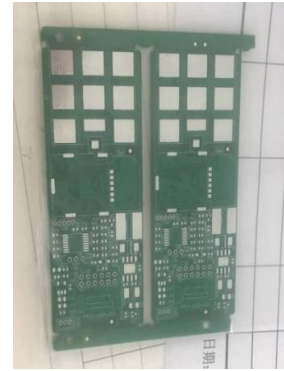
Patch Antenna JLTD1575-1602S25N4G

Feature

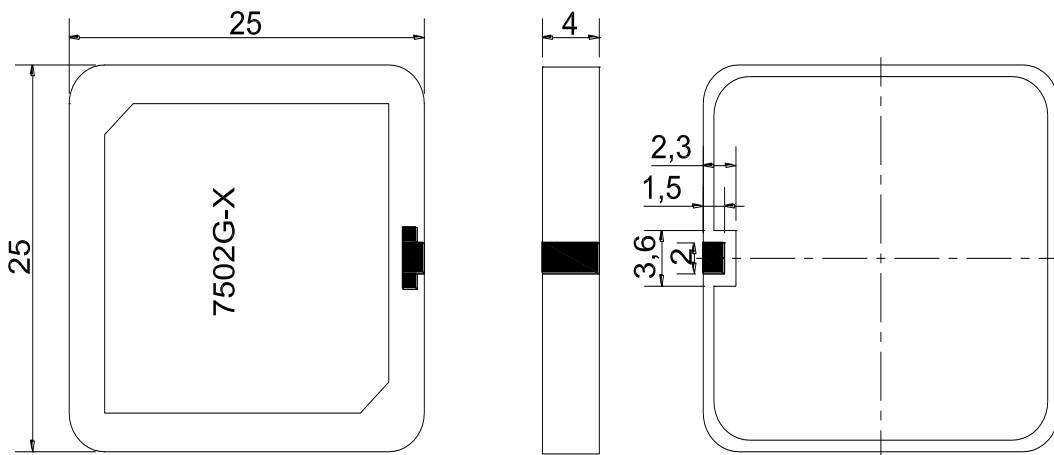
- High gain , Compact
- Pin type
- Customization available

Electrical Specification

Center Frequency	1575.42 MHz	1602 MHz
Return Loss @ F0	$\geq 10\text{dB}$	
Polarization	RHCP	
Gain @ Zenith	-	
Ground plane	配机	
Impedance	50 Ω	
Frequency Temperature Coefficient	$\pm 20\text{ ppm}/^\circ\text{C}$	
Operation Temperature Range	$-40 \sim +85^\circ\text{C}$	



Mechanical Drawing



The last "X" is the serial number of month

Tolerance: ± 0.3
Unit: mm

Product Specification



Patch Antenna 

JLTD1575-1602S25N4G

Test Fixture

Characteristics