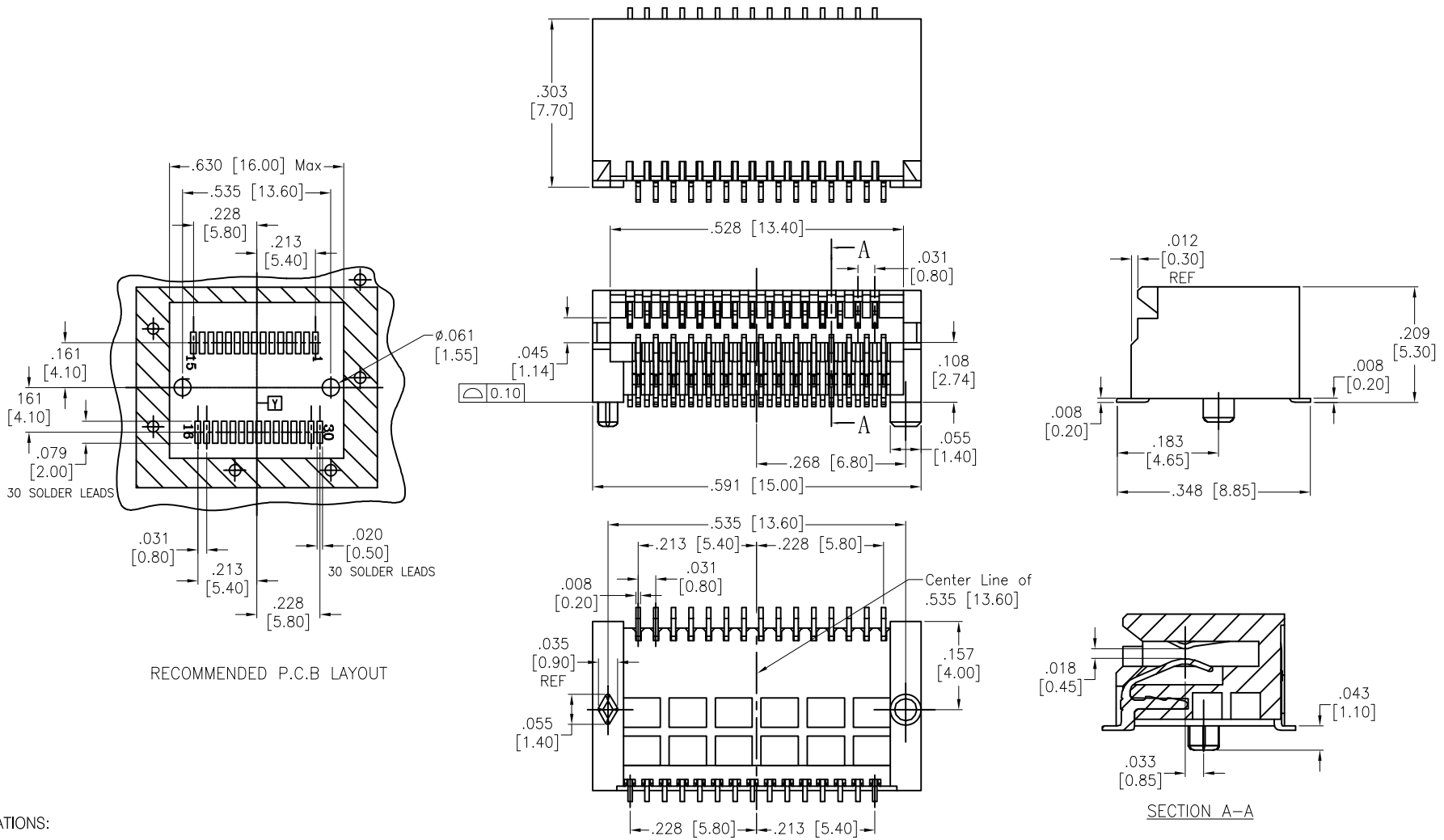


APPROVED: _____
 DATE: _____ TITLE: _____

Rev	AWO #	Description	Date	Appr
-		RELEASED	7/5/21	



RECOMMENDED P.C.B LAYOUT

SECTION A-A

SPECIFICATIONS:
 Material:
 Insulator: Hi-temp thermoplastic, rated UL 94V-0
 Insulator color: Black
 Contacts: Copper Alloy
 Plating:
 30u" Gold over Nickel underplate on contact area,
 Matte Tin over Nickel underplate on SMT tails
 Electrical:
 Contact resistance: 50 mohms max. initial
 Dielectric withstanding voltage: 300 VAC for 1 minute
 Temperature Rating:
 Operating temperature: -40°C to +85°C
 Environmental:
 Lead free, RoHS compliant



PACKAGED ON TAPE & REEL

UNLESS OTHERWISE SPECIFIED ALL DIMENSIONS ARE INCHES [MM]. TOLERANCES: EXCEPT AS NOTED

INCHES	HOLES
.X ± .10	ØX ± .10
.XX ± .020	ØXX ± .015
.XXX ± .015	ØXXX ± .010

ADAM TECH
 909 Rahway Avenue,
 Union, NJ 07083
 Phone: 908-687-5000
 Fax: 908-687-5710

DRAWN	LH	7/5/21
CHECKED	RC	7/5/21
APPROVED		

TITLE
**10 GIGABIT SMALL FORM FACTOR CONNECTOR
 30P, SMT TYPE, 30u" SEL GOLD PLATED**

THIS DRAWING CONTAINS INFORMATION THAT IS PROPRIETARY AND SHOULD NOT BE USED WITHOUT PRIOR WRITTEN PERMISSION FROM ADAM TECH

SIZE X	PART NO. XFF-30-MSG-30-T/R	REV. -
REF: S00005C	SCALE: NTS	SHEET 1 OF 2

6

5

4

3

2

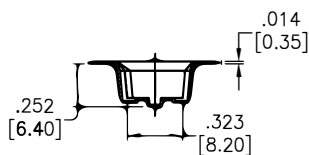
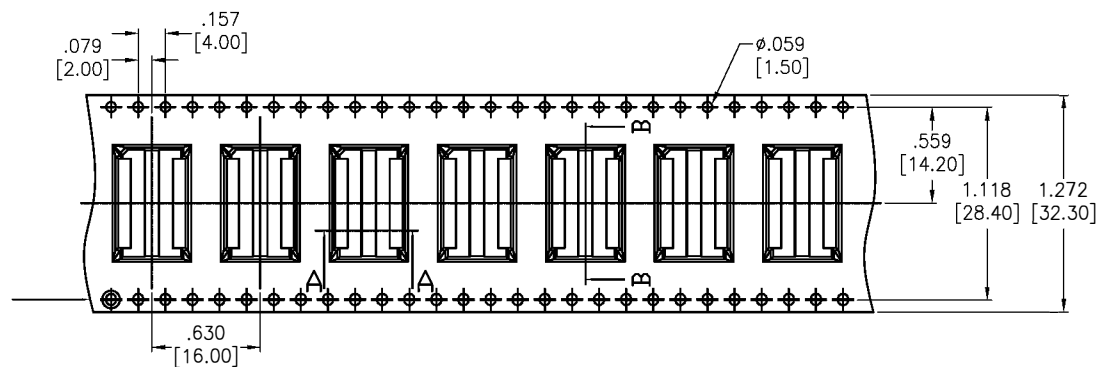
1

APPROVED: _____

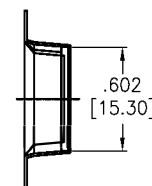
DATE: _____ TITLE: _____

Rev	AWO #	Description	Date	Appr
-----	-------	-------------	------	------

SEE SHT 1 OF 2 FOR REVISION



SECTION A-A



SECTION B-B

UNLESS OTHERWISE SPECIFIED ALL DIMENSIONS ARE INCHES [MM]. TOLERANCES: EXCEPT AS NOTED

INCHES		HOLES	
.X	± .10	∅X	± .10
.XX	± .020	∅XX	± .015
.XXX	± .015	∅XXX	± .010

ADAM TECH

909 Rahway Avenue,
Union, NJ 07083
Phone: 908-687-5000
Fax: 908-687-5710

DRAWN	LH	7/5/21
CHECKED	RC	7/5/21
APPROVED		

TITLE		
10 GIGABIT SMALL FORM FACTOR CONNECTOR 30P, SMT TYPE, 30u" SEL GOLD PLATED		
SIZE	PART NO.	REV.
X	XFF-30-MSG-30-T/R	-

THIS DRAWING CONTAINS INFORMATION THAT IS PROPRIETARY AND SHOULD NOT BE USED WITHOUT PRIOR WRITTEN PERMISSION FROM ADAM TECH

REF: S00005C	SCALE: NTS	SHEET 2 OF 2
--------------	------------	--------------

6

5

4

3

2

1