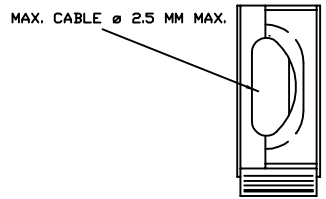
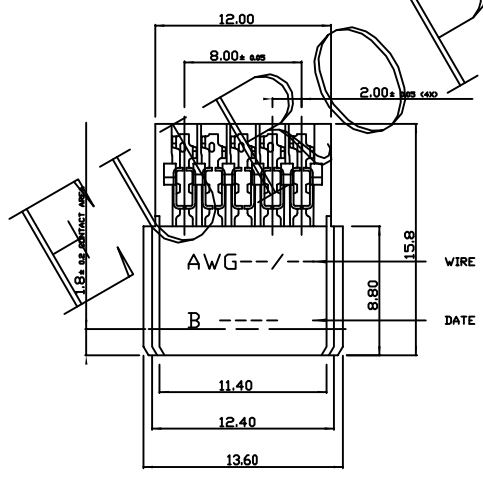
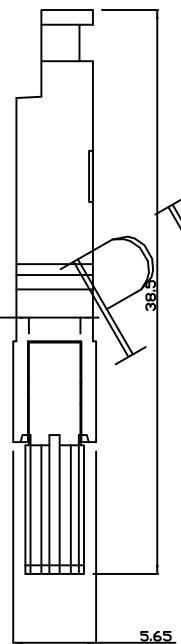
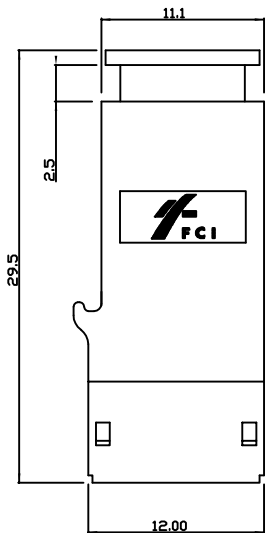
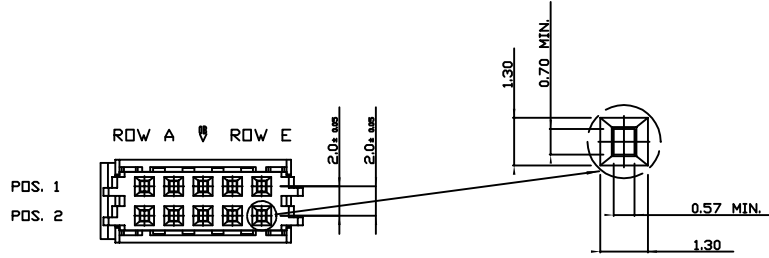


GEN. ST.	01	02	03	04	05	06	07	08	09	10	11	12	13	14	15	16	17	18	19	20	21	22	23	24	25	26	27	28	29	30	31	32	33	34	35	36	37	38	39	40	41	42	43	44	45	46	47	48	49	50	51	52	53	54	55	56	57	58	59	60	61	62	63	64	65	66	67	68	69	70	71	72	73	74	75	76	77	78	79	80	81	82	83	84	85	86	87	88	89	90
INT. ST.	10	11	12	13	14	15	16	17	18	19	20	21	22	23	24	25	26	27	28	29	30	31	32	33	34	35	36	37	38	39	40	41	42	43	44	45	46	47	48	49	50	51	52	53	54	55	56	57	58	59	60	61	62	63	64	65	66	67	68	69	70	71	72	73	74	75	76	77	78	79	80	81	82	83	84	85	86	87	88	89	90									

REV.	DATE	DESCRIPTION	BY	C'K'D'
A	3-97-92	CONVERSION REVISION 00	DM	
B	22-3-95	025-4491	DL	



PERFORMANCE CHARACTERISTICS:

- VOLTAGE RATING : 250 VAC.
- CURRENT RATING : 1.0 A AT 70°C.
- INSULATION RESISTANCE : 10<sup>9</sup> MO MIN.AFTER TEST.
- DIELECTRIC WITHSTANDING VOLTAGE : 1000 V.
- CONTACT RESISTANCE : 20 mΩ MAX. AFTER TEST.
- OPERATING T° : -55°C TO +125°C.
- INSERTION FORCE : 0.75 N MAX. PER CONTACT.
- WITHDRAWAL FORCE : 0.15 N MIN. PER CONTACT.

MATERIALS:

- TERMINAL BLOCK : GLASS REINFORCED THERMOPLASTIC UL94-V0.
- COVER : POLYAMIDE-NYLON.
- CONTACTS : PHOSPHOR BRONZE.
- PLATING : Z1 : 0.40 Y AU MIN. OVER NI IN CONTACT AREA;  
PURE SN ON IDC-TERMINAL.  
N9 : 0.75 Y AU MIN. OVER NI IN CONTACT AREA;  
PURE SN ON IDC-TERMINAL.  
EB : 2.00 Y AU MIN. OVER NI IN CONTACT AREA;  
PURE SN ON IDC-TERMINAL.

WIRE CHARACTERISTICS:

INSULATION DIAMETER 1,20 MM MAX.

PART NUMBERS:

- HM2C06D0C010--LF CONNECTOR FOR WIRE SIZE AWG28,AWG30
- HM2C06D2C010--LF CONNECTOR FOR WIRE SIZE AWG26

MARKING:

PARTNUMBER	WIRE SIZE MARKING
HM2C06D0C010--LF	AWG28/30
HM2C06D2C010--LF	AWG26

NOTE:

- THIS PRODUCT MEETS EUROPEAN UNION DIRECTIVES AND OTHER COUNTRY REGULATIONS AS DESCRIBED IN CS-22-008.
- THE PRODUCT IS NOT INTENDED TO BE EXPOSED TO A MANUFACTURING SOLDER PROCESS.

RELEASED

1DEC ±0,2 1DEC 2DEC ±0,1 2DEC ANGLES ±1° HOEKEN	APPR. DATE -1-N DRAFT CHECKED 22-11-95 R.Verbeek	2X5 POS. HM2 CABLE CONNECTOR WITH HOOD AT. N. HM2C06D-C010--LF	SCALE 4/1
WE RESERVE THE RIGHT TO CHANGE DIMENSIONS OR REQUIREMENTS WITHOUT PRIOR NOTICE.	PROD. MGR. PRENG.MGR. PR.MGT.MGR.	FCI FCI MECHELEN N.V. A SPINGSTRAAT 8, 2000 MECHELEN	
ALL DIMENSIONS IN MM	REFEREN S / REFERENTIE EP,M ,191-KD,502,0B-C		

THIS IS OUR EXCLUSIVE PROPERTY. IT IS NOT TO BE COPIED, REPRODUCED OR TRANSMITTED IN ANY FORM OR BY ANY MEANS, ELECTRONIC OR MECHANICAL, INCLUDING PHOTOCOPYING, RECORDING, OR BY ANY INFORMATION STORAGE AND RETRIEVAL SYSTEM. ANY UNAUTHORIZED REPRODUCTION OR TRANSMISSION IS STRICTLY PROHIBITED. ALL RIGHTS ARE RESERVED.

DEZ IS ONZE EIGENDOM EN MAG NIEMAN HANDELEN, VERBODEN EN NIET OVERDRAAGEN OF OPENBAAR MAKEN. NIEMAN MOET NIET VERVOLGEN, REPRODUCEREN, OVERDRAAGEN OF OPENBAAR MAKEN. NIEMAN MOET NIET OVERDRAAGEN OF OPENBAAR MAKEN. NIEMAN MOET NIET OVERDRAAGEN OF OPENBAAR MAKEN.

PDM: Rev B

STATUS Released

BS,D ,202064,002 B  
No. 200150