

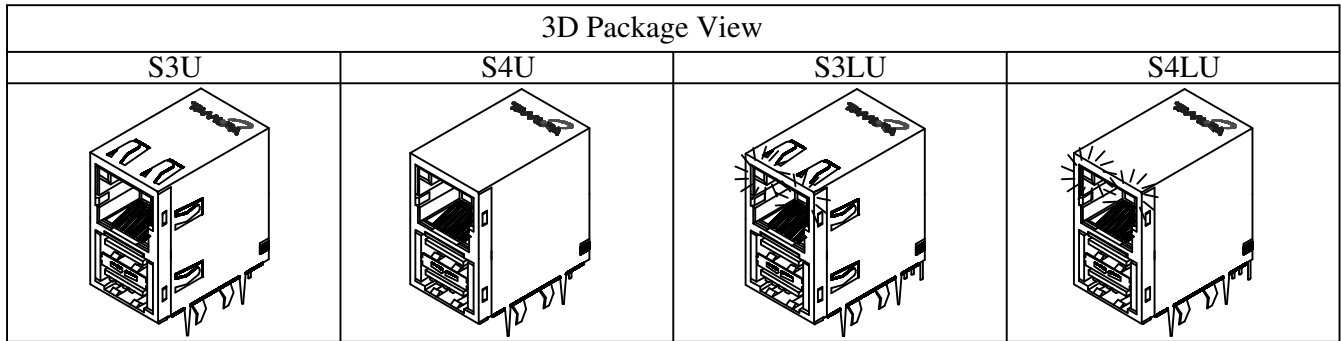
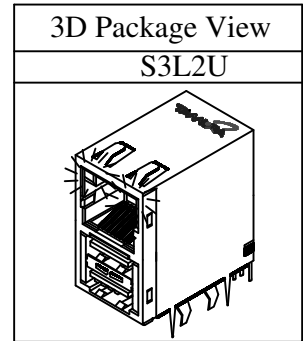


# RJ45 Integrated Connector, USB Stack

10/100 Base-TX, Single Port, Through Hole, With or Without LED

### Features:

1. Meets IEEE 802.3 and ANSI X3.263
2. Operating Temperature: 0°C to +85°C
3. 1500Vrms Isolation
4. Enhanced Common Mode Attenuation for maximum EMI Suppression
5. Full Product Qualification Tests



| Product Selection |             |            |                |                          |                 |       |                  |         |     |            |       |            |                         |
|-------------------|-------------|------------|----------------|--------------------------|-----------------|-------|------------------|---------|-----|------------|-------|------------|-------------------------|
| #                 | P/N         | Row X Port | Pack age Style | Schematic Identification |                 |       |                  |         |     |            |       |            |                         |
|                   |             |            |                | Auto Xfmr                | Input Pins -out |       | Output Pins -out |         | RTN | Turn Ratio | SCH # | LED Yellow | LED Green and/or Orange |
| 1**               | TIC-L025-11 | 1x1        | S3LU           | X                        | 2,1,3           | 4,6,5 | 1,4,5,2          | 3,7,8,6 | Shd | 1ct:1ct    | 9L    | 7,8        | 9,10*                   |
| 2**               | TIC-L026-11 | 1x1        | S3LU           | X                        | 2,1,3           | 4,6,5 | 1,4,5,2          | 3,7,8,6 | Shd | 1ct:1ct    | 9L    | 7,8        | 9,10*                   |
| 3                 | TIC-L027-11 | 1x1        | S3LU           | X                        | 2,1,3           | 4,6,5 | 1,4,5,2          | 3,7,8,6 | Shd | 1ct:1ct    | 9L1   | 7,8***     | 9,10                    |
| 4                 | TIC-L028-11 | 1x1        | S4LU           | X                        | 2,1,3           | 4,6,5 | 1,4,5,2          | 3,7,8,6 | Shd | 1ct:1ct    | 9L    | 7,8        | 9,10*                   |
| 5                 | TIC-L029-11 | 1x1        | S3L2U          | X                        | 2,1,3           | 4,6,5 | 1,4,5,2          | 3,7,8,6 | Shd | 1ct:1ct    | 9L1   | 7,8***     | 9,10                    |
| 6                 | TIC-L030-11 | 1x1        | S3U            | X                        | 2,1,3           | 4,6,5 | 1,4,5,2          | 3,7,8,6 | Shd | 1ct:1ct    | 10    | No         | No                      |
| 7                 | TIC-L031-11 | 1x1        | S4U            | X                        | 2,1,3           | 4,6,5 | 1,4,5,2          | 3,7,8,6 | Shd | 1ct:1ct    | 10    | No         | No                      |

\* Bi-directional LED's, green and orange. The single LED is green.

\*\*The difference between these parts is breakdown voltage capacitor. 2KV for TIC-L025-11

\*\*\*LED on pins 7-8 is orange, on pins 9-10 is green. 3KV for TIC-L026-11

| Package Identification |               |                       |                       |   |
|------------------------|---------------|-----------------------|-----------------------|---|
| Package #              | Package Style | Size LWH              |                       | Package Identification  |
|                        |               | inches                | mm                    |   |
| S3U                    | Single Port   | 1.005 x 0.662 x 1.138 | 25.53 x 16.81 x 28.91 | 6 Spring taps, 3 Pin-Rows, No LED<br>Shield Mounting GND tap - USB Shell tap  |
| S4U                    | Single Port   | 1.005 x 0.662 x 1.138 | 25.53 x 16.81 x 28.91 | No Spring taps, 3 Pin-Rows, No LED<br>Shield Mounting GND tap - USB Shell tap |
| S3L2U                  | Single Port   | 1.005 x 0.662 x 1.138 | 25.53 x 16.81 x 28.91 | 2 Spring taps, 4 Pin-Rows, LED's<br>Shield Mounting GND tap - USB Shell tap   |
| S3LU                   | Single Port   | 1.005 x 0.662 x 1.138 | 25.53 x 16.81 x 28.91 | 6 Spring taps, 4 Pin-Rows, LED's<br>Shield Mounting GND tap - USB Shell tap   |
| S4LU                   | Single Port   | 1.005 x 0.662 x 1.138 | 25.53 x 16.81 x 28.91 | No Spring taps, 4 Pin-Rows, LED's<br>Shield Mounting GND tap - USB Shell tap  |



# RJ45 Integrated Connector, USB Stack

10/100 Base-TX, Single Port, Through Hole, With or Without LED

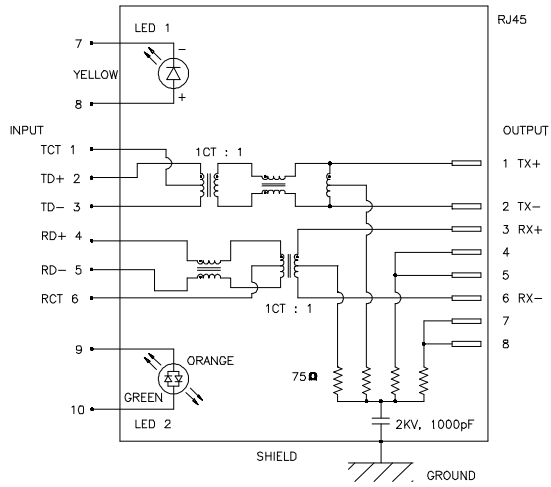
| Package Information |                      |                       |                         |
|---------------------|----------------------|-----------------------|-------------------------|
| Weight              |                      | Quantity              |                         |
| weight / pcs (g)    | weight / carton (kg) | quantity / tray (pcs) | quantity / carton (pcs) |
| 17.2                | 4.9                  | 50                    | 200                     |

| Electrical Specification @ 25 °C |                      |               |               |                  |                    |                    |                  |               |
|----------------------------------|----------------------|---------------|---------------|------------------|--------------------|--------------------|------------------|---------------|
| Insertion Loss (dB Max)          | Return Loss (dB Min) |               |               | CMRR (dB Min)    | Crosstalk (dB Min) | OCL (m H Min)      | Hipot (Vrms)     | Impedance (Ω) |
| 1-100 MHz<br>1                   | 1-30 MHz<br>-18      | 60 MHz<br>-16 | 80 MHz<br>-12 | 1-100 MHz<br>-35 | 1-100 MHz<br>-35   | 8mA Dc Bias<br>350 | 1 minute<br>1500 | 100           |

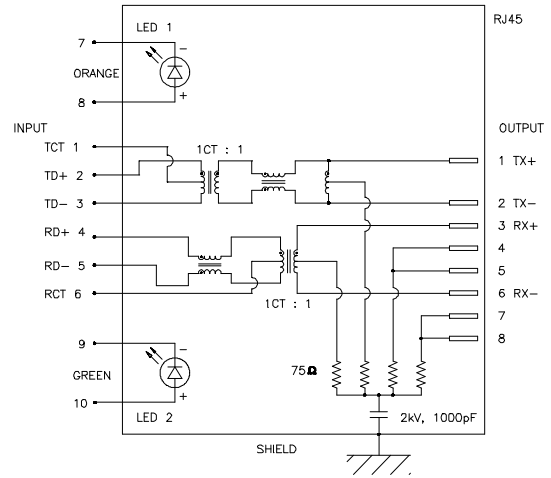
| Mechanical Material Specification |                |                  |              |               |                  |              |                               |                   |                   |
|-----------------------------------|----------------|------------------|--------------|---------------|------------------|--------------|-------------------------------|-------------------|-------------------|
| Contact Material                  | Contact        |                  |              |               |                  |              | Housing & Insert              | Shell             |                   |
|                                   | Contact Finish |                  |              |               |                  |              |                               | Front             | Back              |
|                                   | Upper Contact  |                  |              | Lower Contact |                  |              |                               |                   |                   |
|                                   | Contact Area   | Solder Tail Area | Underplating | Contact Area  | Solder Tail Area | Underplating |                               |                   |                   |
| Phosphor Bronze                   | Gold           | Tin/Lead (9:1)   | Nickel       | Gold          | Tin/Lead (9:1)   | Nickel       | Thermoplastic Nylon 6T, Black | Stainless SUS 304 | Stainless SUS 304 |
| 0.35 mm thick                     | 30 μ" Min.     | 100 μ" Min.      | 50 μ" Min.   | 100 μ" Min.   | 100 μ" Min.      | 50 μ" Min.   | UL 94V-0                      | 0.25 mm thick     | 0.20 mm thick     |

| Product Qualification Tests |   |
|-----------------------------|---|
| Test #                      | Test Description  |
| 1                           | Product Performance : Complete Electrical Test, Mechanical Measurements and Visual Inspection |
| 2                           | Low Level Contact Resistance  |
| 3                           | Dielectric Strength   |
| 4                           | Insulation Resistance   |
| 5                           | Vibration   |
| 6                           | Mechanical Shock  |
| 7                           | Durability (Repeated mating / unmating)   |
| 8                           | Solderability   |
| 9                           | Thermal Shock   |
| 10                          | Humidity Temperature Cycling  |

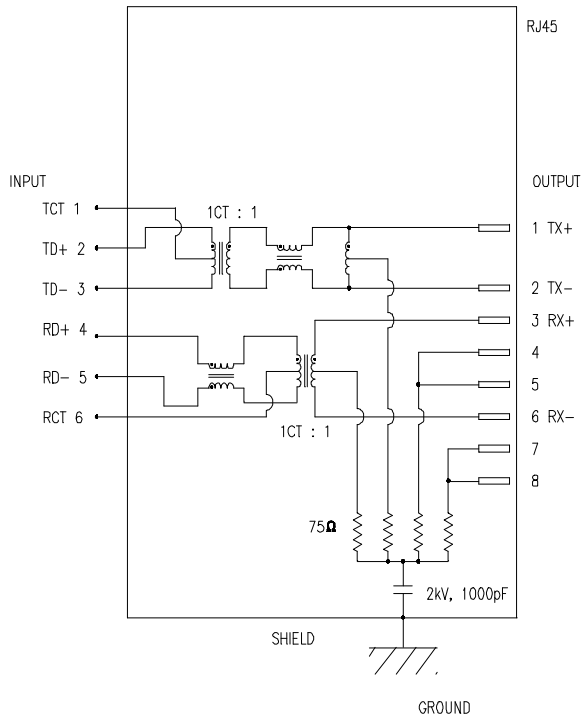
Schematic 9L



Schematic 9L1



Schematic 10



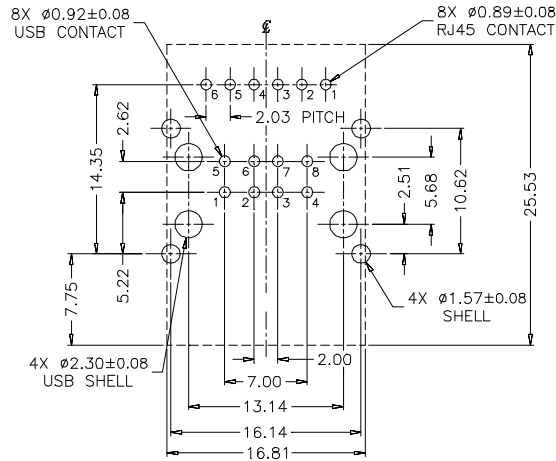
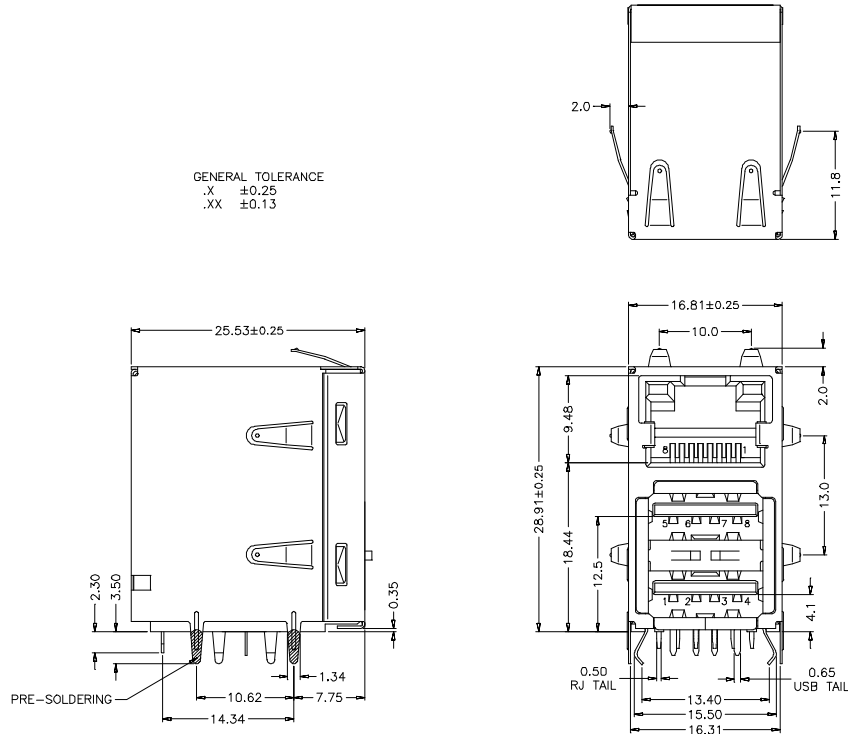


# RJ45 Integrated Connector, USB Stack

10/100 Base-TX, Single Port, Through Hole, With or Without LED

## Package S3U

GENERAL TOLERANCE  
 .X ±0.25  
 .XX ±0.13



RECOMMENDED PCB LAYOUT  
 COMPONENT SIDE  
 PCB THICKNESS : 1.60mm  
 ALL DIMENSION TOLERANCE ARE ±0.05  
 UNLESS OTHERWISE SPECIFIED



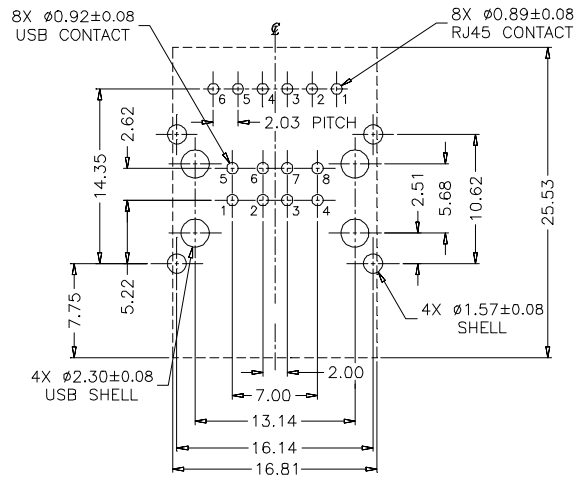
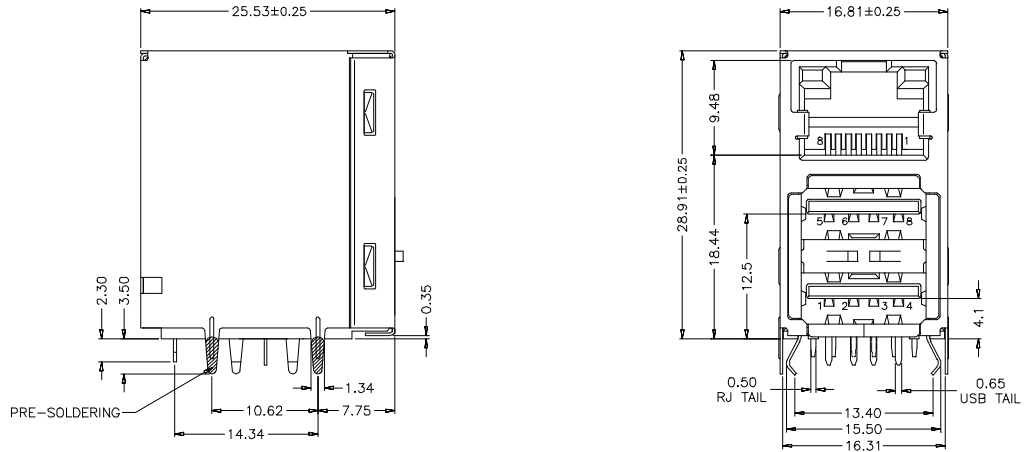
# RJ45 Integrated Connector, USB Stack

10/100 Base-TX, Single Port, Through Hole, With or Without LED

## Package S4U

### GENERAL TOLERANCE

.XX ±0.13  
.X ±0.25



RECOMMENDED PCB LAYOUT  
COMPONENT SIDE  
PCB THICKNESS : 1.60mm  
ALL DIMENSION TOLERANCE ARE ±0.05  
UNLESS OTHERWISE SPECIFIED



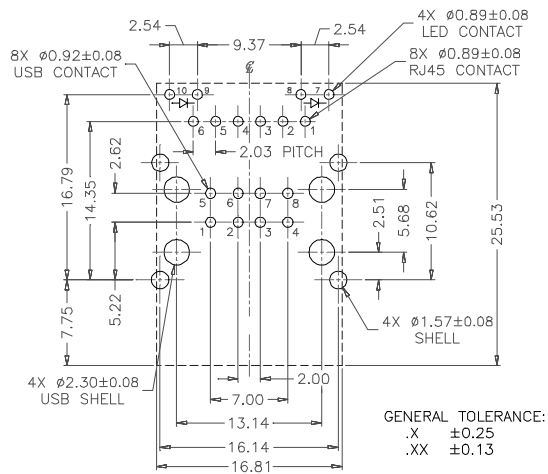
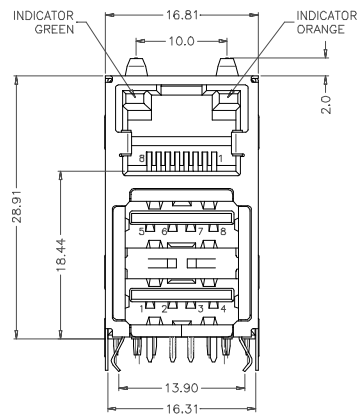
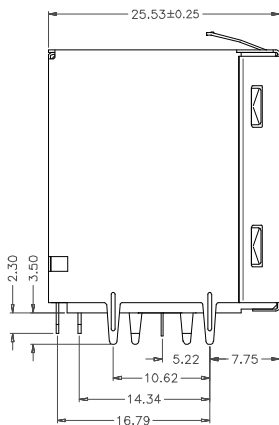
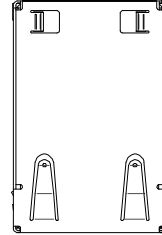
# RJ45 Integrated Connector, USB Stack

10/100 Base-TX, Single Port, Through Hole, With or Without LED

## Package S3L2U

GENERAL TOLERANCE

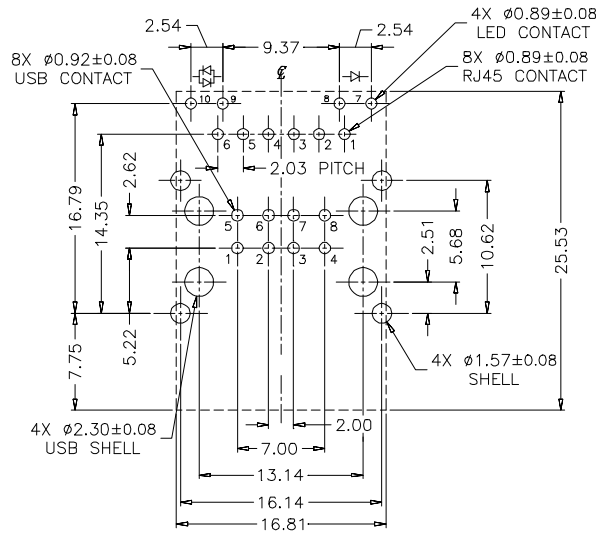
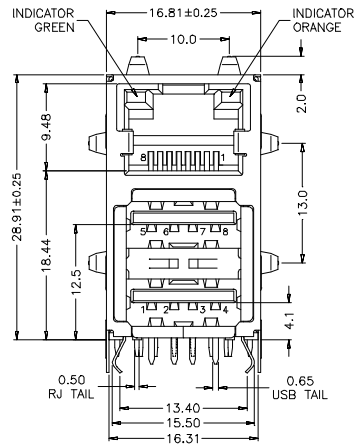
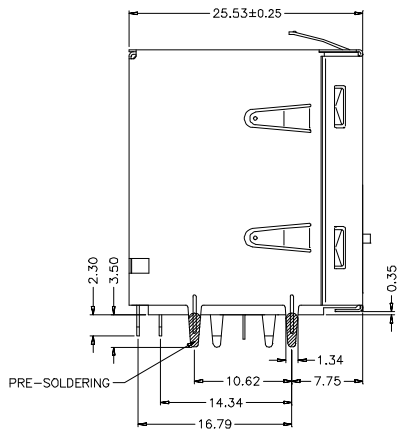
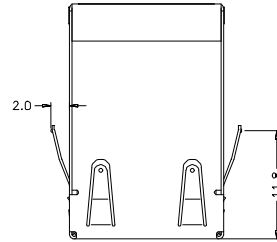
.X  $\pm 0.38$   
.XX  $\pm 0.25$



RECOMMENDED PCB LAYOUT  
COMPONENT SIDE  
PCB THICKNESS : 1.60mm  
ALL DIMENSION TOLERANCE ARE  $\pm 0.05$   
UNLESS OTHERWISE SPECIFIED

### Package S3LU

GENERAL TOLERANCE  
 .XX ±0.13  
 .X ±0.25

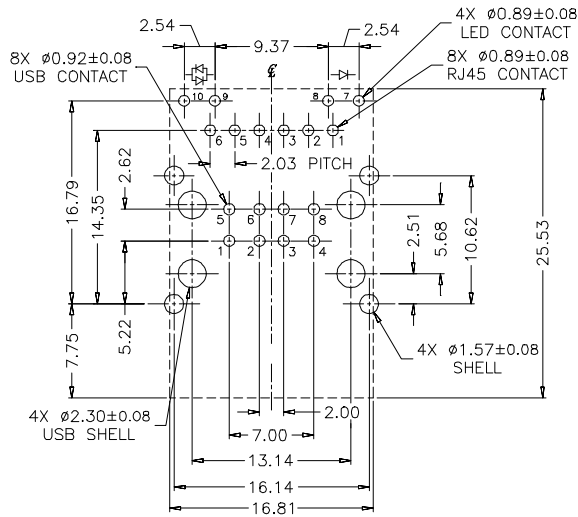
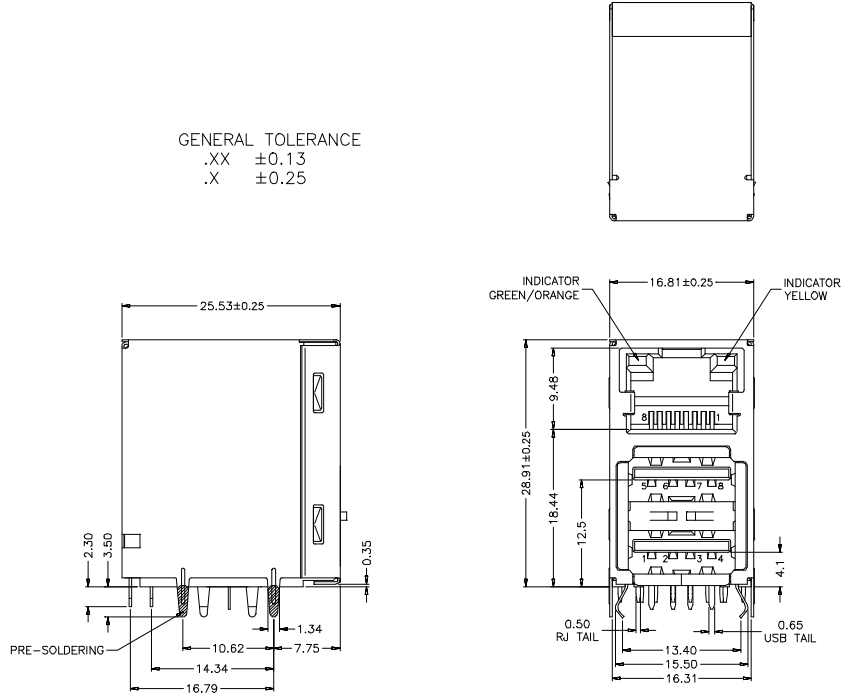


RECOMMENDED PCB LAYOUT  
 COMPONENT SIDE  
 PCB THICKNESS : 1.60mm  
 ALL DIMENSION TOLERANCE ARE ±0.05  
 UNLESS OTHERWISE SPECIFIED

### Package S4LU

GENERAL TOLERANCE

.XX ±0.13  
.X ±0.25



RECOMMENDED PCB LAYOUT  
COMPONENT SIDE  
PCB THICKNESS : 1.60mm  
ALL DIMENSION TOLERANCE ARE ±0.05  
UNLESS OTHERWISE SPECIFIED