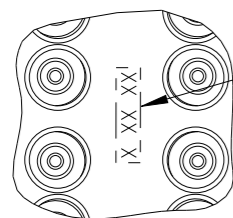
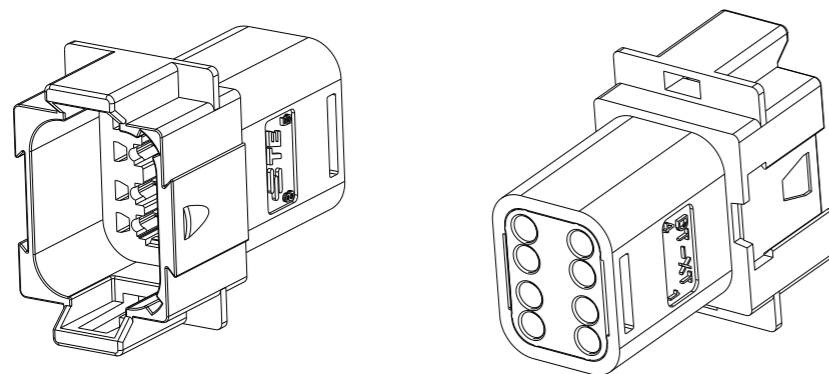


P	LTR	DESCRIPTION	DATE	DWN	APVD
	A	INITIAL RELEASE	12JUN2020	J.S	I.Y
	A1	ECR-20-010349	26JUL2020	J.G	I.Y
	A2	ECN-21-113425	17AUG2021	J.G	Z.Z

8CCT RECEPTACLE CONNECTOR

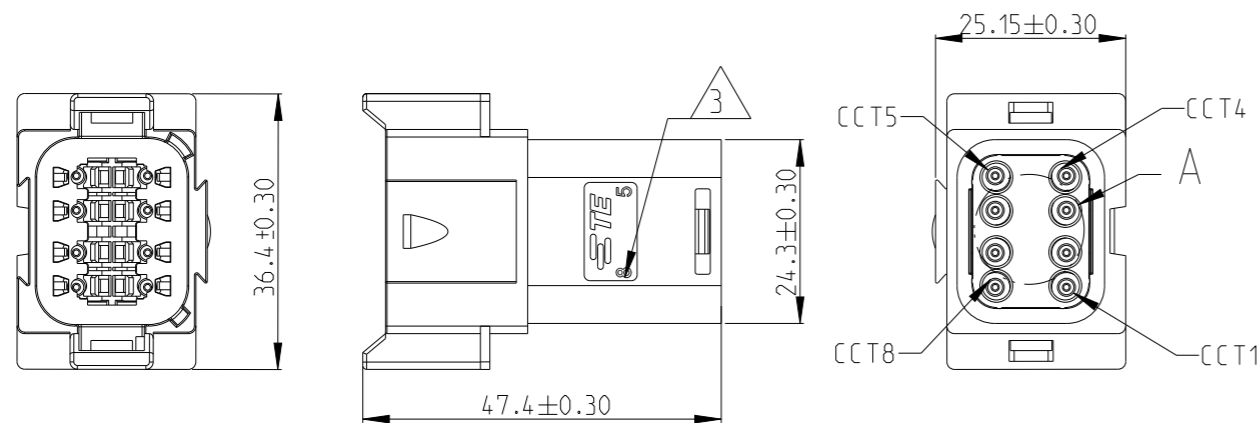
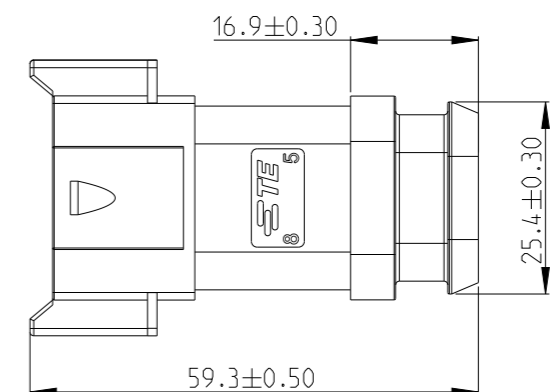
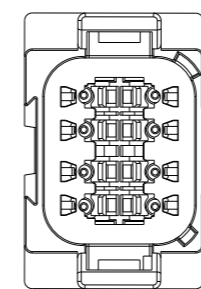
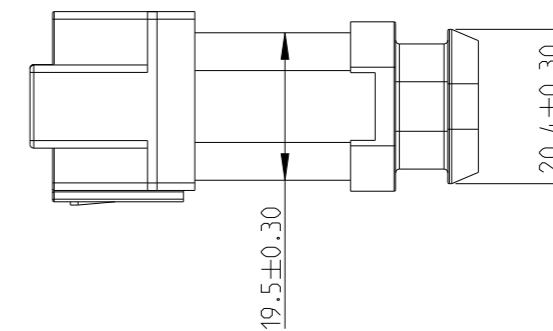
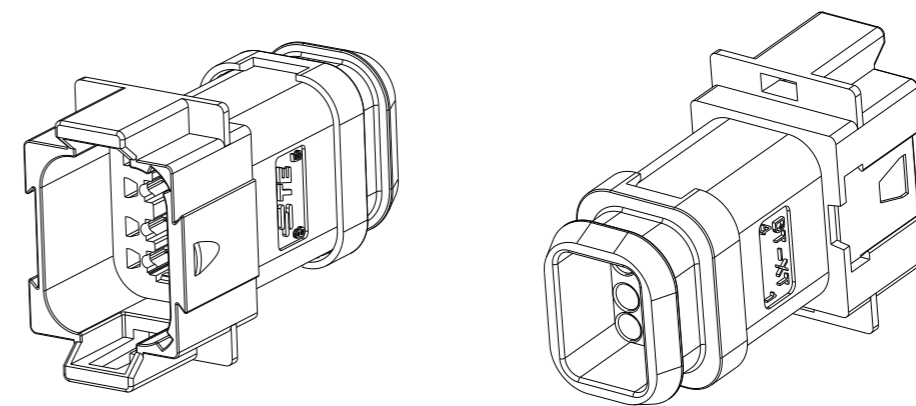


DATE CODE: X XX XX
 X- DAY: 1- 7
 XX- WEEK: 01 - 52
 XX- YEAR: 00 - 99
 # MACHINE NO. 1

EXAMPLE: 11315 = DAY 1, WEEK 13, YEAR 15
 i.e. 23rd OF MARCH 2015

DETAIL A
 SCALE 2:1

8CCT RECEPTACLE CONNECTOR WITH HEATSHRINK HOUSING ULTRASONICALLY WELDED IN PLACE



1. THIS RECEPT MATES WITH PLUG ASSEMBLY PN X-2600039-X, WEDGE LOCK PN W8P.

2. MATERIAL
 RECEPT HOUSING: NYLON GF30
 BACK SEAL: SILICONE RUBBER
 BACK COVER: NYLON GF30, BLACK
 HEATSHRINK HOUSING: NYLON GF30, BLACK

3. CIRCUIT IDENTIFICATION

4. JACKET RANGE LARGE = Ø2.23MM TO 3.68MM (SEAL COLOUR: LIGHT BLUE)
 JACKET RANGE SMALL = Ø1.35MM TO 3.05MM (SEAL COLOUR: BURNT ORANGE)

5. SEE SHEET 3 FOR FINAL PART NUMBER DESIGNATION

THIS DRAWING IS A CONTROLLED DOCUMENT.

DIMENSIONS:	TOLERANCES UNLESS OTHERWISE SPECIFIED:
mm	
	0 PLC ±
	1 PLC ±
	2 PLC ±
	3 PLC ±
	4 PLC ±
	ANGLES ±
	FINISH ±

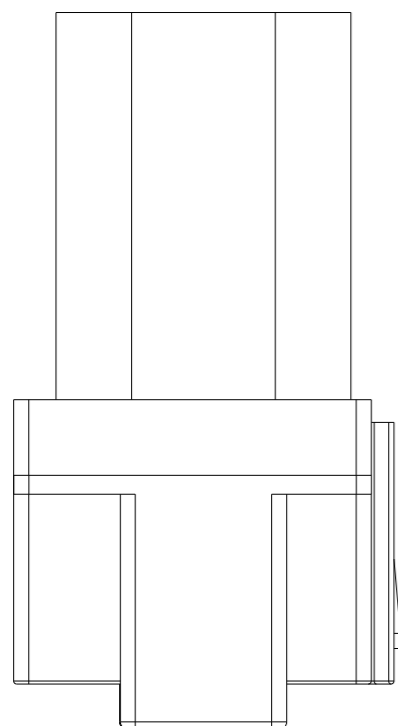
DWN	J.Shang	12JUN2020
CHK	E.Jiang	12JUN2020
APVD	I.Yin	12JUN2020
PRODUCT SPEC	108-160026	
APPLICATION SPEC	114-160017	
WEIGHT	-	
CUSTOMER DRAWING		

		TE Connectivity	
NAME 8CCT DT-XT CONNECTOR RECEPTACLE ASSEMBLY			
SIZE	CAGE CODE	DRAWING NO	RESTRICTED TO
A3	00779	C-2600038	-
SCALE 1:1		SHEET 1 OF 3	REV A2

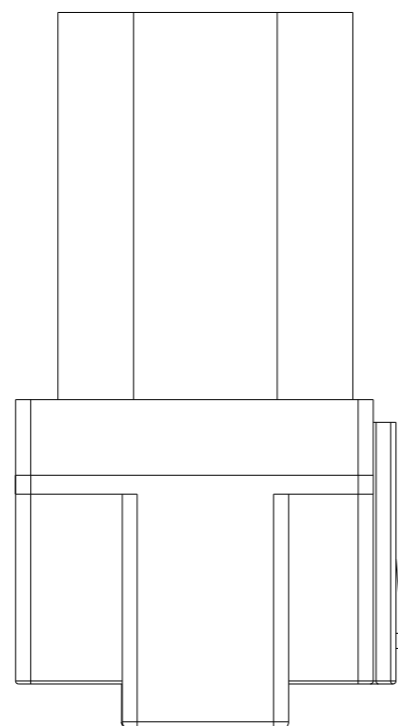
REVISIONS

P	LTR	DESCRIPTION	DATE	DWN	APVD
		SEE SHEET 1			

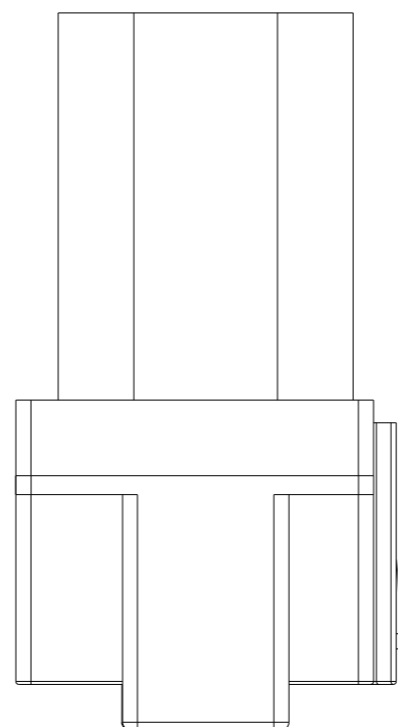
KEYING OPTION A



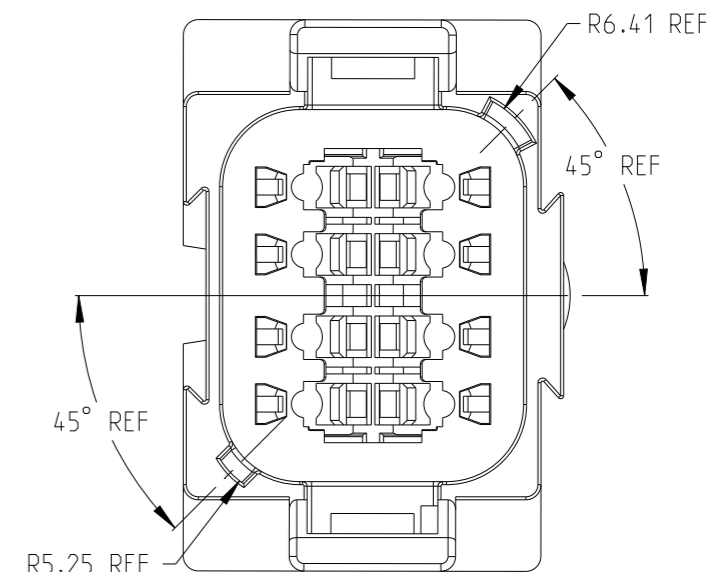
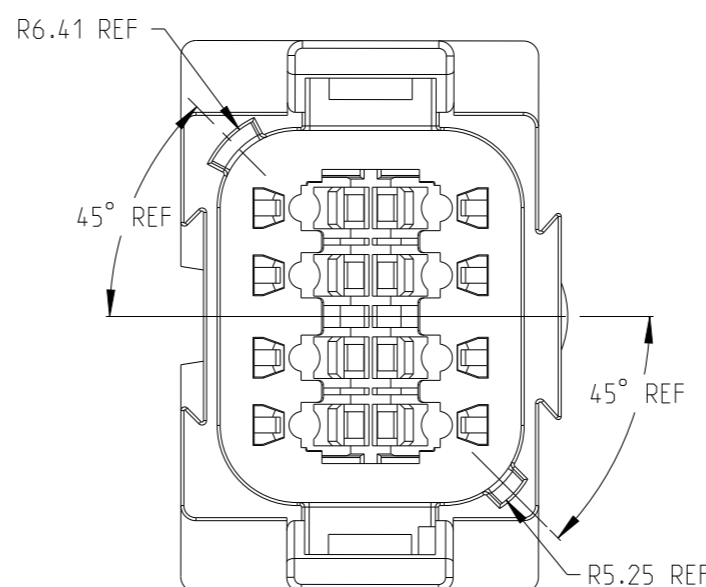
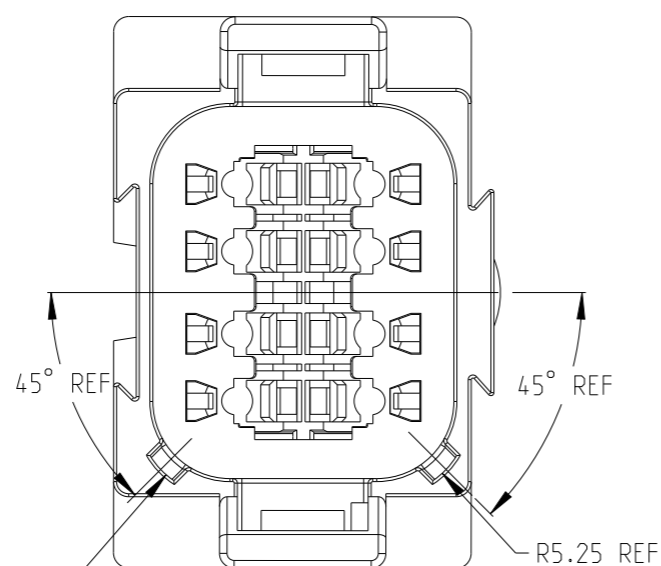
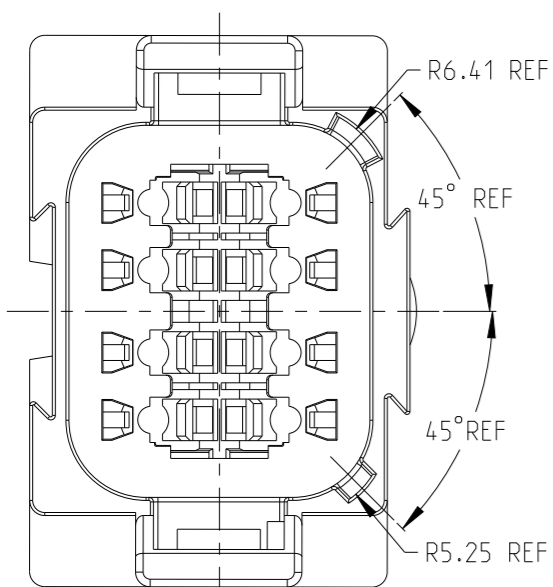
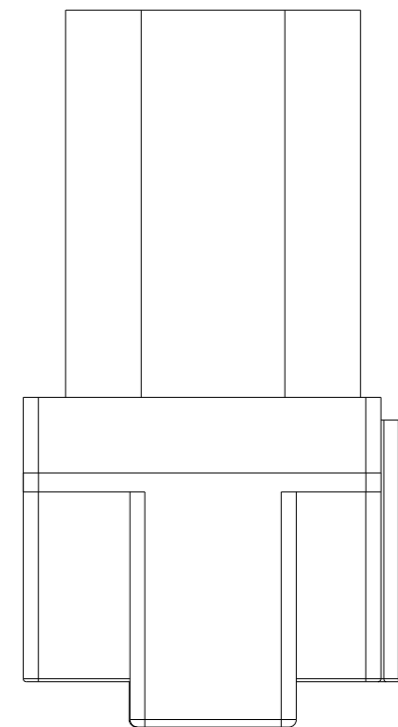
KEYING OPTION B



KEYING OPTION C



KEYING OPTION D



THIS DRAWING IS A CONTROLLED DOCUMENT.

DWN	J. Shang	12 JUN 2020
CHK	E. Jiang	12 JUN 2020
APVD	L. Yin	12 JUN 2020



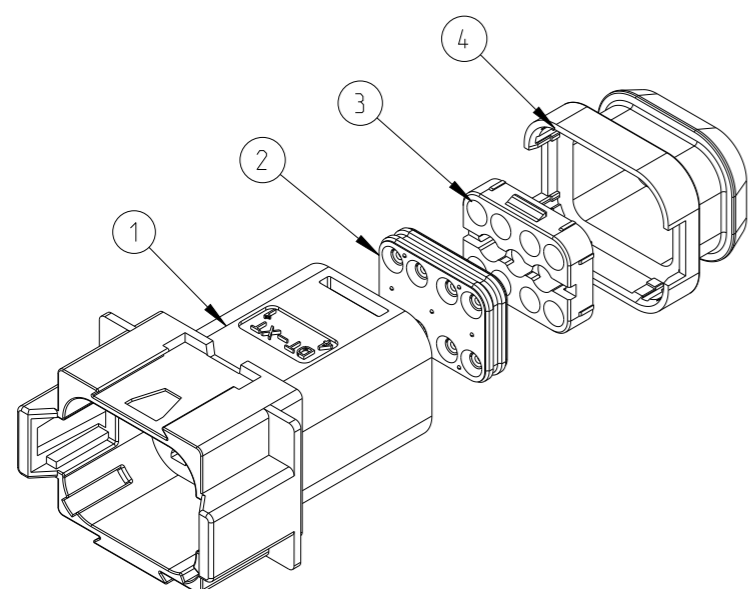
DIMENSIONS:	TOLERANCES UNLESS OTHERWISE SPECIFIED:
mm	
	0 PLC ±
	1 PLC ±
	2 PLC ±
	3 PLC ±
	4 PLC ±
	ANGLES ±
MATERIAL	FINISH
-	-
-	-

PRODUCT SPEC	108-160026
APPLICATION SPEC	114-160017
WEIGHT	-
CUSTOMER DRAWING	

NAME				8CCT DT-XT CONNECTOR RECEPTACLE ASSEMBLY	
SIZE	CAGE CODE	DRAWING NO	RESTRICTED TO		
A3	00779	C-2600038	-		
SCALE		SHEET	OF	REV	
2:1		2	3	A2	

REVISIONS

P	LTR	DESCRIPTION	DATE	DWN	APVD
		SEE SHEET 1			



QTY.	TE PN	ALIAS PN	REVISION OF EACH ASSY NO.	WEIGHT OF EACH ASSY(g)	KEYING	A	A	B	C	D	BACK SEAL SMALL	BACK SEAL LARGE	BACK COVER	HEATSHRINK HOUSING
2-	-0	934445647	-	18.09		-	-	-	-	1	-	1	1	1
1-	-9	934445633	-	18.09		-	-	-	1	-	-	1	1	1
1-	-8	934445621	-	18.09		-	-	1	-	-	-	1	1	1
1-	-7	934445611	-	18.09		-	1	-	-	-	-	1	1	1
1-	-6	934445612	-	18.09		1	-	-	-	-	-	1	1	1
1-	-5	934445547	-	18.09		-	-	-	-	1	1	-	1	1
1-	-4	934445533	-	18.09		-	-	-	1	-	1	-	1	1
1-	-3	934445521	-	18.09		-	-	1	-	-	1	-	1	1
1-	-2	934445511	-	18.09		-	1	-	-	-	1	-	1	1
1-	-1	934445512	-	18.09		1	-	-	-	-	1	-	1	1
1-	-0	934445247	-	15.24		-	-	-	-	1	-	1	1	-
	-9	934445233	-	15.24		-	-	-	1	-	-	1	1	-
	-8	934445221	-	15.24		-	-	1	-	-	-	1	1	-
	-7	934445211	-	15.24		-	1	-	-	-	-	1	1	-
	-6	934445212	-	15.24		1	-	-	-	-	-	1	1	-
	-5	934445147	-	15.24		-	-	-	-	1	1	-	1	-
	-4	934445133	-	15.24		-	-	-	1	-	1	-	1	-
	-3	934445121	-	15.24		-	-	1	-	-	1	-	1	-
	-2	934445111	-	15.24		-	1	-	-	-	1	-	1	-
	-1	934445112	-	15.24		1	-	-	-	-	1	-	1	-
TE PN	ALIAS PN	REVISION OF EACH ASSY NO.	WEIGHT OF EACH ASSY(g)		KEYING	A	A	B	C	D	-	-	-	-
					COLOR	GERY	BLACK	BLACK	GREEN	BROWN	BURNT ORANGE	LIGHT BLUE	BLACK	BLACK
					MATERIAL	NYLON GF30	NYLON GF30	NYLON GF30	NYLON GF30	NYLON GF30	SILICONE RUBBER	SILICONE RUBBER	NYLON GF30	NYLON GF30
					DESCRIPT ION	RECEPTACLE HOUSING					BACK SEAL SMALL	BACK SEAL LARGE	BACK COVER	HEATSHRINK HOUSING
					ITEM NO	1					2		3	4

THIS DRAWING IS A CONTROLLED DOCUMENT.

DWN J.Shang 12JUN2020
 CHK E.Jiang 12JUN2020
 APVD L.Yin 12JUN2020

PRODUCT SPEC 108-160026
 APPLICATION SPEC 114-160017
 WEIGHT -

TE TE Connectivity

NAME 8CCT DT-XT CONNECTOR RECEPTACLE ASSEMBLY

SIZE A3 CAGE CODE 00779 DRAWING NO. ©=2600038 RESTRICTED TO -

CUSTOMER DRAWING SCALE 1:1 SHEET 3 OF 3 REV A2

DIMENSIONS:	TOLERANCES UNLESS OTHERWISE SPECIFIED:
mm	
	0 PLC ±
	1 PLC ±
	2 PLC ±
	3 PLC ±
	4 PLC ±
	ANGLES ±
MATERIAL	FINISH
-	-
-	-