

4

3

2

1

THIS DRAWING IS UNPUBLISHED.

RELEASED FOR PUBLICATION

© COPYRIGHT - BY - ALL RIGHTS RESERVED.

LOC	DIST	REVISIONS					
		P	LTR	DESCRIPTION	DATE	DWN	APVD
H	-		H	ECR-10-018708	09SEP2010	PW	DH
			J	ECR-12-004130	29MAR2012	PW	DH
			J1	ECR-13-013007	9OCT2013	E.L	WK.H
			J2	ECO-18-012432	28AUG2018	K.G	WK.H

NOTES:

1 DRAWING REPRESENTS PART VERSION "A3".

2 PLATING:
1,2µm MIN. NICKEL ALL OVER
0,8µm MIN. GOLD ON CONTACT AREA
0,05µm - 0,20µm GOLD ON SOLDER AREA

3 COPLANARITY OF SOLDER SURFACES 0,08 MAX.

4 DIMENSION DEPENDS ON DISTANCE BETWEEN PWB AND BATTERY, SEE TABLE ON SHEET 4.

5 MARKING: VERSION, PROCESS ID (##), PRODUCTION DATE (YWW, YEAR AND WEEK).

6 MARKING: CAVITY ID.

7 PN 2-1857084-5 AS SHOWN.

R0,30 REF (A01)

DETAIL Y
(FOR REFERENCE ONLY)
SCALE 20:1

SEE DETAIL Y

SECTION A-A

OBSOLETE

3	CONTACT, FIRST BREAK	COPPER ALLOY	GOLD PLATED
2	CONTACT, LAST BREAK	COPPER ALLOY	GOLD PLATED
1	HOUSING	PLASTIC, GF	-
ITEM NO.	DESCRIPTION	MATERIAL	FINISH

THIS DRAWING IS A CONTROLLED DOCUMENT.

DIMENSIONS:	TOLERANCES UNLESS OTHERWISE SPECIFIED:
mm	
	0 PLC ±-
	1 PLC ±0,2
	2 PLC ±0,1
	3 PLC ±-
	4 PLC ±-
	ANGLES ±-
MATERIAL	FINISH
-	-

DWN 29 APR 2005

CHK J. Tuin

29 APR 2005

APVD J. Tuin

29 APR 2005

D. Halberstadt

PRODUCT SPEC

108-19276

APPLICATION SPEC

WEIGHT -

CUSTOMER DRAWING

STE TE Connectivity

NAME
PLUG CONNECTOR
UTB, 3 POSITION
BATTERY BLOCK

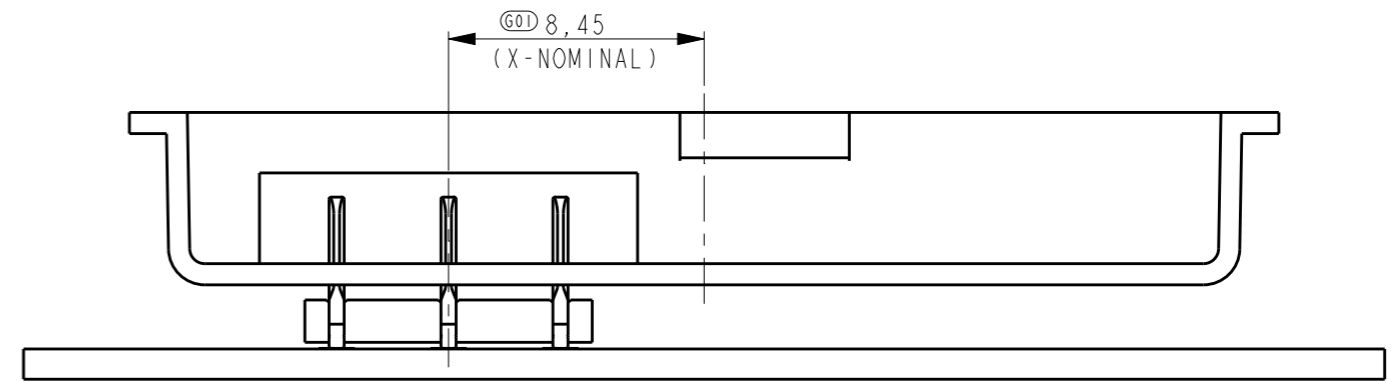
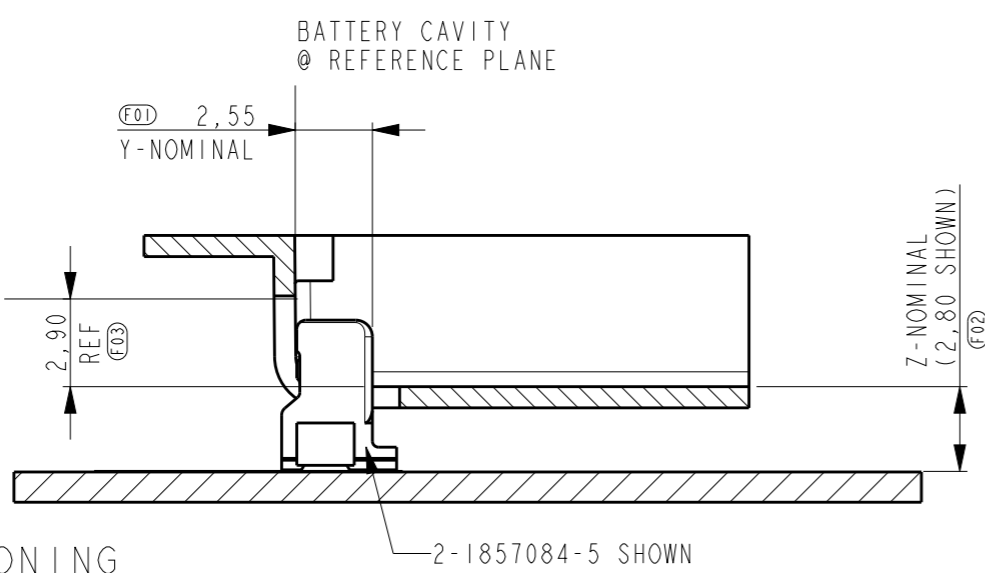
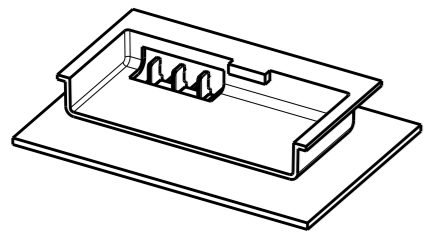
SIZE	CAGE CODE	DRAWING NO	RESTRICTED TO
A3	00779	C=1857084	

SCALE 10:1 SHEET 1 OF 5 REV J2

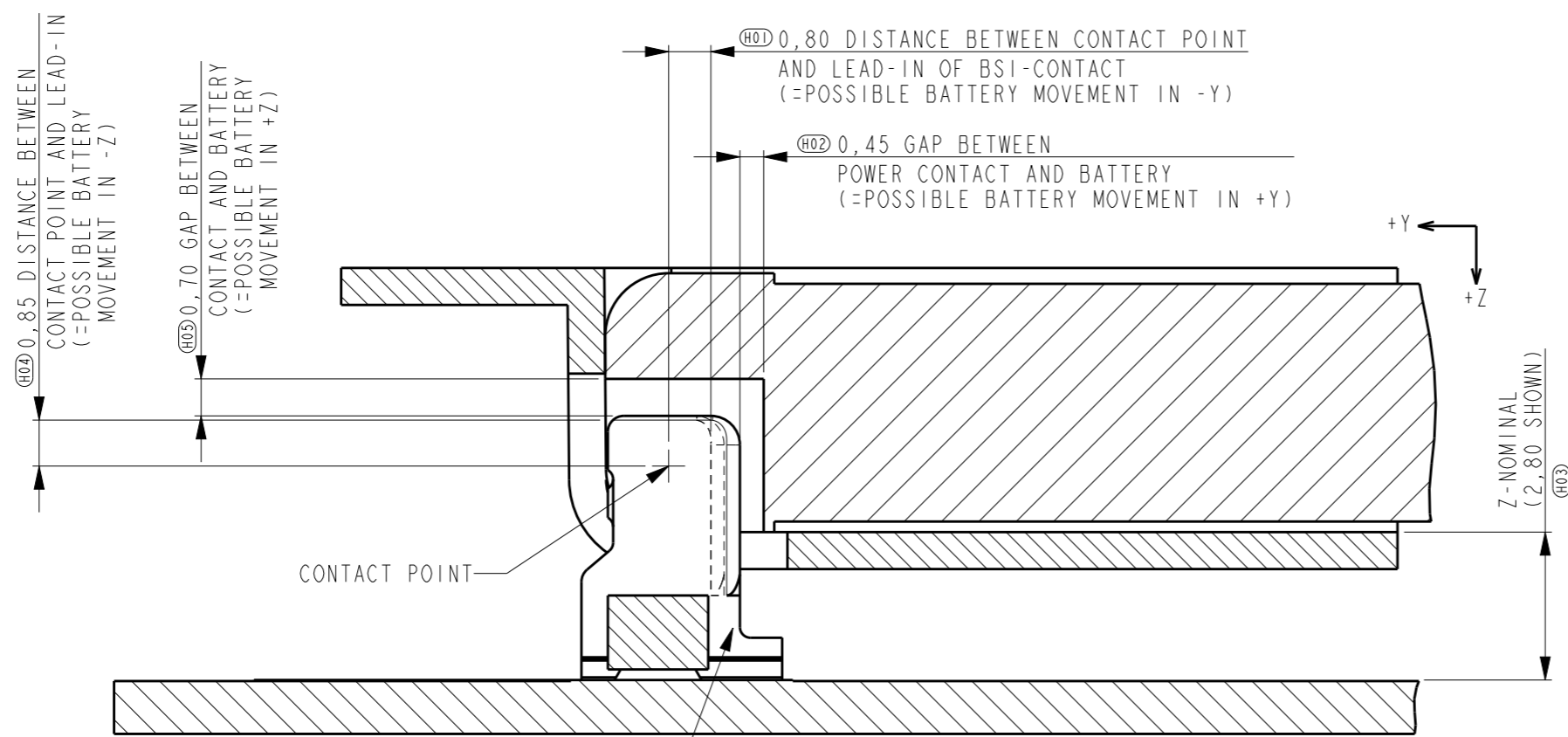
1470-19 (3/11)

THIS DRAWING IS UNPUBLISHED. RELEASED FOR PUBLICATION
 © COPYRIGHT - BY - ALL RIGHTS RESERVED.

LOC	DIST	REVISIONS			
P	LTR	DESCRIPTION	DATE	DWN	APVD
H	-	SEE SHEET 1	-	-	-



CONNECTOR POSITIONING



WORKING RANGE:
 (PERMITTED BATTERY MOVEMENT)

IN X-DIRECTION ±0,50 SYMMETRICAL

IN Y-DIRECTION 1,25 TOTAL
 IN -Y-DIRECTION 0,80 (BATTERY LENGTH TOLERANCE, PHONE CASE TOLERANCE, ASSEMBLY TOLERANCE, PHONE FLEXIBILITY)
 IN +Y-DIRECTION 0,45 (ASSEMBLY TOLERANCE, PHONE FLEXIBILITY)

IN Z-DIRECTION 1,55 TOTAL
 IN -Z-DIRECTION 0,85 (BATTERY FRONT TOLERANCE, PHONE CASE TOLERANCE, PHONE FLEXIBILITY)
 IN +Z-DIRECTION 0,70 (SEE TABLE SHEET 4) (PHONE CASE TOLERANCE, PHONE FLEXIBILITY)

THESE VALUES APPLY IF Z-NOMINAL IS IN THE CENTER OF THE RANGE SPECIFIED FOR THE PLUG (AS SHOWN HERE).

WORKING RANGE

SCALE 8:1

OBSOLETE

THIS DRAWING IS A CONTROLLED DOCUMENT.		DWN J. Tuin 29 APR 2005	TE Connectivity	
		CHK J. Tuin 29 APR 2005		
		APVD D. Halberstadt 29 APR 2005	NAME	
DIMENSIONS: mm		PRODUCT SPEC 108-19276	PLUG CONNECTOR UTB, 3 POSITION BATTERY BLOCK	
TOLERANCES UNLESS OTHERWISE SPECIFIED:		APPLICATION SPEC -	RESTRICTED TO	
0 PLC ±-		WEIGHT -	SIZE A3	CAGE CODE 00779
1 PLC ±0,2		DRAWING NO C-1857084		
2 PLC ±0,1		SCALE 10:1		
3 PLC ±-		SHEET 2 OF 5		
4 PLC ±-		REV J2		
ANGLES ±-		CUSTOMER DRAWING		
FINISH -				

4

3

2

1

THIS DRAWING IS UNPUBLISHED.

RELEASED FOR PUBLICATION

© COPYRIGHT - BY - ALL RIGHTS RESERVED.

LOC	DIST	REVISIONS					
H	-	P	LTR	DESCRIPTION	DATE	DWN	APVD
			-	SEE SHEET 1	-	-	-

NMP CODE	PART NUMBER	Z-NOMINAL RANGE	DIMENSION "A"	DIMENSION "B"	MASS [mg]	+Z DIRECTION MOVEMENT (REF SHEET 3)
5469254	1-1857084-7	>1,7 (1,8 - 2,2)	4,20	1,60	159	+0,40
5469741	2-1857084-0	>2,0 (2,1 - 2,5)	4,50	1,60	174	+0,70
5469743	2-1857084-5	>2,5 (2,6 - 3,0)	5,00	1,60	189	+0,70
5469745	3-1857084-0	>3,0 (3,1 - 3,5)	5,50	2,60	219	+0,70
5469747	3-1857084-5	>3,5 (3,6 - 4,0)	6,00	2,60	235	+0,70
5469749	4-1857084-0	>4,0 (4,1 - 4,5)	6,50	2,60	251	+0,70

PRODUCT SELECTION

OBSOLETE

2-1857084-0

3-1857084-5

THIS DRAWING IS A CONTROLLED DOCUMENT.		DWN 29 APR 2005 J. Tuin		TE Connectivity	
DIMENSIONS: mm		CHK 29 APR 2005 J. Tuin			
		TOLERANCES UNLESS OTHERWISE SPECIFIED:		NAME PLUG CONNECTOR UTB, 3 POSITION BATTERY BLOCK	
		0 PLC ±- 1 PLC ±0,2 2 PLC ±0,1 3 PLC ±- 4 PLC ±- ANGLES ±-		APVD 29 APR 2005 D. Halberstadt	
MATERIAL -		FINISH -		PRODUCT SPEC 108-19276	
				APPLICATION SPEC -	
				WEIGHT -	
				SIZE A3	
				CAGE CODE 00779	
				DRAWING NO. C-1857084	
				RESTRICTED TO	
				CUSTOMER DRAWING	
				SCALE 10:1	
				SHEET 3 OF 5	
				REV J2	

1470-19 (3/11)

4

3

2

1

THIS DRAWING IS UNPUBLISHED.

RELEASED FOR PUBLICATION

© COPYRIGHT - BY -

ALL RIGHTS RESERVED.

LOC	DIST	REVISIONS			
P	LTR	DESCRIPTION	DATE	DWN	APVD
H	-	SEE SHEET 1	-	-	-

Technical drawing showing dimensions and callouts for the plug connector:

- (K01) 10,00
- (K02) 3,70 TYP
- (K03) 3,55
- (K04) 4,20
- (K05) 1,20
- (K06) 8,45
- 2,70 (K07)
- BATTERY CAVITY REFERENCE PLANE (SEE SHEET 2)
- CENTER OF BATTERY CAVITY

OBSOLETE

NOTES:

△ AREA FREE OF SOLDER SCREEN.

THIS DRAWING IS A CONTROLLED DOCUMENT.

DWN 29 APR 2005

CHK J. Tuin

29 APR 2005

APVD J. Tuin

29 APR 2005

D. Halberstadt

PRODUCT SPEC

108-19276

APPLICATION SPEC

-

WEIGHT

-

CUSTOMER DRAWING

TE Connectivity

NAME
PLUG CONNECTOR
UTB, 3 POSITION
BATTERY BLOCK

SIZE	CAGE CODE	DRAWING NO	RESTRICTED TO
A3	00779	C-1857084	

SCALE	10:1	SHEET	4	OF	5	REV	J2
-------	------	-------	---	----	---	-----	----

DIMENSIONS:

mm

TOLERANCES UNLESS OTHERWISE SPECIFIED:

0 PLC	±-
1 PLC	±0,2
2 PLC	±0,1
3 PLC	±-
4 PLC	±-
ANGLES	±-

MATERIAL

-

FINISH

-

1470-19 (3/11)

4

3

2

1

THIS DRAWING IS UNPUBLISHED.

RELEASED FOR PUBLICATION

© COPYRIGHT - BY - ALL RIGHTS RESERVED.

LOC	DIST	REVISIONS					
H	-	P	LTR	DESCRIPTION	DATE	DWN	APVD
			-	SEE SHEET 1	-	-	-

Technical drawing of a plug connector showing top, side, and cross-sectional views with dimensions and tolerances:

- Top view dimensions: $1,1 \pm 0,2$ (L01), $2,0$ (L02), $4,0$ (L03), $8,0$ (L08), $11,5$ (L05), $13,25 \pm 0,10$ (L06), $24,0$ (L07), $\pm 0,3$.
- Side view dimensions: $0,4$ (M02), $0,4$ (M03).
- Top view hole diameter: $\varnothing 1,5$ (L04).
- Side view hole diameter: $\varnothing 1,5$ (L04).
- Unreel direction: X-1857084-X UNREEL DIRECTION

PART NUMBER	QUANTITY PER REEL	DIMENSION "D"
1-1857084-7	1300	4,8
2-1857084-0	1300	4,8
2-1857084-5	1300	5,3
3-1857084-0	1000	6,9
3-1857084-5	1000	6,9
4-1857084-0	1000	6,9

NOTES:

1 REEL DIMENSION: 330x101x24,4.

OBSOLETE

DIMENSIONS:		TOLERANCES UNLESS OTHERWISE SPECIFIED:		APPROVALS		TE Connectivity	
mm		0 PLC	\pm	DWN	J. Tuin	PLUG CONNECTOR	
		1 PLC	$\pm 0,2$	CHK	J. Tuin	UTB, 3 POSITION	
		2 PLC	$\pm 0,1$	APVD	D. Halberstadt	BATTERY BLOCK	
		3 PLC	\pm	PRODUCT SPEC	108-19276	SIZE	A3
		4 PLC	\pm	APPLICATION SPEC	-	CAGE CODE	00779
		ANGLES	\pm	WEIGHT	-	DRAWING NO	C-1857084
MATERIAL		FINISH	-	CUSTOMER DRAWING		RESTRICTED TO	
				SCALE		SHEET	5 OF 5
				10:1		REV	J2

1470-19 (3/11)