

# EEA, EEB Series

Cost Effective  
Compact RFI Filter  
IEC Connector Package



UL Recognized  
CSA Certified  
VDE Approved  
SEV Approved\*  
SEMKO Approved\*

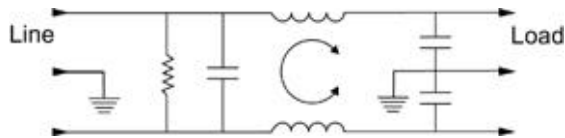
## EEA Series

This is a new generation of compact RFI filters with IEC socket. A totally new design in both the internal structure and manufacturing process makes this series cost effective and compact. The EEA series supersedes the EF series by providing superior performance, particularly in the common mode at low frequencies. Mechanically, its slimmer size makes it compatible with all similar filters on the market.

## EEB Series

This is a new generation of compact RFI filters with IEC socket. A totally new design in both the internal structure and manufacturing process makes this series cost effective and compact. Electrically, the EEB provides enhanced differential mode performance compared to both the EEA and EF series. Mechanically, its slimmer size makes it compatible with all similar filters on the market.

## Electrical Schematic



Resistor location for reference only.

\*Style 1 only



## Specifications

Maximum leakage current, each  
line-to-ground @ 120 VAC 60 Hz: .22 mA  
@ 250 VAC 50 Hz: .38 mA

Hipot rating (one minute):  
line-to-ground 2250 VDC  
line-to-line 1450 VDC

Operating frequency: 50/60 Hz  
Rated voltage: 120/250 VAC

### Minimum insertion loss in dB:

#### EEA

Line-to-ground in 50 ohm circuit

Current Rating	Frequency-MHz								
	.01	.05	.1	.15	.5	1	5	10	30
1A	12	23	29	32	41	47	47	47	40
3A	-	10	15	19	30	36	48	50	47
6A	-	1	4	10	22	28	42	48	47
10A	-	1	3	5	14	20	32	38	47
15A	-	-	-	1	5	8	20	26	40

Line-to-line in 50 ohm circuit

Current Rating	Frequency-MHz						
	.5	1	1.5	3	5	10	30
1A	1	9	19	32	42	45	40
3A	2	4	6	20	35	45	40
6A	2	4	6	6	24	40	40
10A	1	4	5	5	5	30	40
15A	1	4	6	12	14	15	40

#### EEB

Line-to-ground in 50 ohm circuit

Current Rating	Frequency-MHz								
	.01	.05	.1	.15	.5	1	5	10	30
1A	12	23	29	32	41	47	47	47	40
3A	-	10	14	18	30	36	48	50	47
6A	-	1	4	10	22	28	42	48	47
10A	-	1	3	5	14	20	32	38	47
15A	-	-	-	1	5	8	20	26	40

Line-to-line in 50 ohm circuit

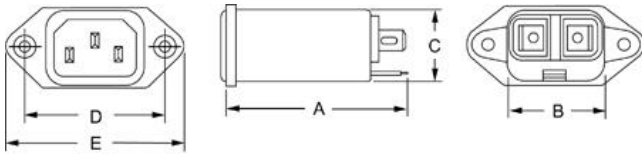
Current Rating	Frequency-MHz							
	.01	.15	.5	1	3	5	10	30
1A	1	3	14	23	41	47	50	44
3A	1	2	11	14	25	38	44	40
6A	1	2	10	14	20	33	42	40
10A	1	2	10	16	19	19	39	40
15A	-	2	10	16	24	28	28	40

# Series EEA, EEB

## Case Styles

Metric shown in italics.

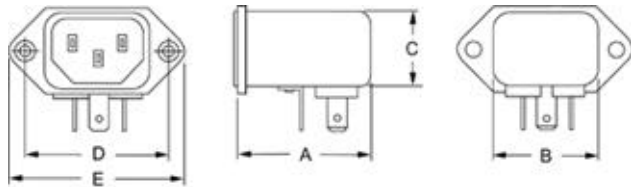
### EEA1/EEB1



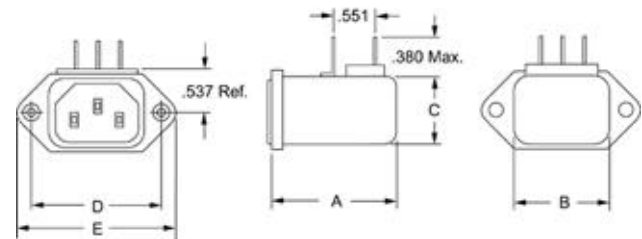
Typical dimensions

Terminals:  $\frac{.250}{6.35}$  (3) Holes:  $\frac{.07}{1.8}$  Dia.(2) Slot:  $\frac{.07 \times .16}{1.8 \times 3.8}$  (1)

### EEA2/EEB2

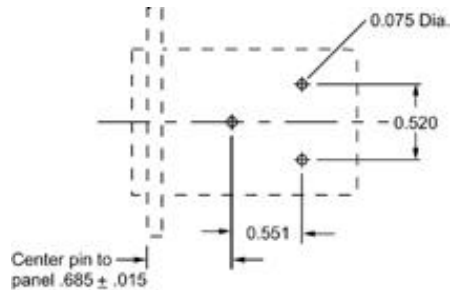


### EEAP/EEBP

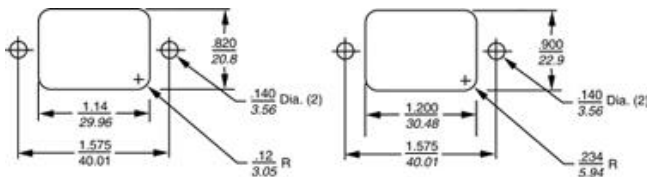


Mounting holes:  $\frac{.132}{3.35}$  Dia.(2) with .260 Dia. x 90° countersunk for #4 Flathead Screw.

### EEAP/EEBP Model PCB Layout



### Recommended Panel Cutouts



Panel Cutout (front mount)

Tolerance  $\pm \frac{.02}{.51}$

Panel Cutout (back mount)

Tolerance  $\pm \frac{.02}{.51}$

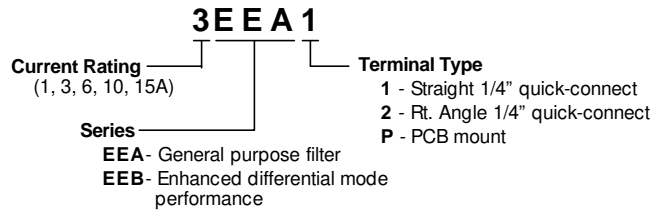
## Case Dimensions

Metric shown in italics.

Part No.	A (max)	B (max)	C (max)	D $\pm \frac{.010}{\pm .25}$	E (max)
EEA1	$\frac{2.15}{54.6}$	$\frac{1.12}{28.45}$	$\frac{0.81}{20.6}$	$\frac{1.575}{40.01}$	$\frac{1.98}{50.3}$
EEA2	$\frac{1.54}{39.1}$	$\frac{1.12}{28.45}$	$\frac{0.81}{20.6}$	$\frac{1.575}{40.01}$	$\frac{1.98}{50.3}$
EEAP	$\frac{1.54}{39.1}$	$\frac{1.12}{28.45}$	$\frac{0.81}{20.6}$	$\frac{1.575}{40.01}$	$\frac{1.98}{50.3}$
EEB1	$\frac{2.15}{54.6}$	$\frac{1.12}{28.45}$	$\frac{0.81}{20.6}$	$\frac{1.575}{40.01}$	$\frac{1.98}{50.3}$
EEB2	$\frac{1.54}{39.1}$	$\frac{1.12}{28.45}$	$\frac{0.81}{20.6}$	$\frac{1.575}{40.01}$	$\frac{1.98}{50.3}$
EEBP	$\frac{1.54}{39.1}$	$\frac{1.12}{28.45}$	$\frac{0.81}{20.6}$	$\frac{1.575}{40.01}$	$\frac{1.98}{50.3}$

## Ordering Information

Consult your local Corcom sales representative for pricing.



## Available Part Numbers

1EEA1	6EEA1	1EEB1	6EEB1
1EEA2	6EEA2	1EEB2	6EEB2
1EEAP	6EEAP	1EEBP	6EEBP
3EEA1	10EEA1	3EEB1	10EEB1
3EEA2	10EEA2	3EEB2	10EEB2
3EEAP	10EEAP	3EEBP	10EEBP
	15EEA1		15EEB1

### Accessory Line Cord No. GA400

7 1/2 foot, 3 conductor line cord to mate with filter IEC in put connector. 1250 watt, 10A-125 VAC, black SVT cord, UL listed, CSA certified

### Accessory Insulating Boot No. FA601

Plastic shroud to cover terminals on back of filter (style 1 terminals only)