

| ATLANTIC VERSION TERMINATOR INTERFACE ADAPTER | PART NUMBER | REVISION | DESCRIPTION              | FEED TYPE                       | APPLICATOR STYLE CONVERSION CHART |                       |           |             |           |   |                        |
|---|-------------|----------|--------------------------|---------------------------------|-----------------------------------|-----------------------|-----------|-------------|-----------|---|------------------------|
|   |             |          |                          |                                 | CONVERT TO                        | PART NUMBERS REQUIRED |           |             |           |   |                        |
|   | 2150259-2   | A        | FINE CRIMP HEIGHT ADJUST | PNEUMATIC                       | SERVO LATCH PLATE                 | 2119951-1             | 1901697-1 | 8-2150259-5 | -         | - | 2168400-7 (QUANTITY 2) |
|   | 2150259-5   | A        | FINE CRIMP HEIGHT ADJUST | SERVO LATCH PLATE <sup>4</sup>  | SMART APPLICATOR                  | 2161326-1             | -         | 8-2150259-4 | -         | - | -                      |
|   | 2150259-6   | A        | NON-CRIMP HEIGHT ADJUST  | SERVO LATCH PLATE <sup>11</sup> | PNEUMATIC FEED                    | 2119950-1             | 2119792-1 | -           | 2119641-1 | - | 2063440-2              |
|   | 2150259-7   | A        | FINE CRIMP HEIGHT ADJUST | NONE                            | -                                 | -                     | -         | -           | -         | - | -                      |
|   | 7-2150259-7 | A        | CRIMP TOOLING KIT        | -                               | -                                 | -                     | -         | -           | -         | - | -                      |
|   |             |          |                          |                                 |                                   |                       |           |             |           |   |                        |
|   |             |          |                          |                                 |                                   |                       |           |             |           |   |                        |

| APPLICATOR DATA                      |                |      |
|--------------------------------------|----------------|------|
| CRIMP                                | SIZE           | TYPE |
| WIRE                                 | 2.79 mm [.110] | F    |
| INSUL                                | 6.35 mm [.250] | F    |
| APPLICATOR INSTRUCTIONS<br>408-10390 |                |      |

| TERMINAL DATA: TE TERMINAL                            |             | TE CRIMP SPECIFICATION            |             |
|---|-------------|-----------------------------------|-------------|
| TERMINAL NAME: RECEPTACLE, FASTIN-FASTON, .312 SERIES |             |                                   |             |
| WIRE STRIP LENGTH                                     |             | INSULATION DIAMETER RANGE         |             |
| .170-.203 IN [4.32-5.16 mm]                           |             | ∅ .000-.160 IN [0.00-4.06 mm] MAX |             |
| TERMINAL APPLICATION SPECIFICATION                    | 114-2065    |                                   |             |
| TERMINALS APPLIED <sup>10</sup>                       |             |                                   |             |
| TE TERMINAL   | TE TERMINAL | TE TERMINAL                       | TE TERMINAL |
| 63813-1   |             |                                   |             |

| WIRE SIZE | CRIMP HEIGHT mm [INCH]     | CRIMP HEIGHT REFERENCE SETTING <sup>9</sup> |
|-----------|----------------------------|---|
| 12 AWG    | 2.31+/-0.05 [.091+/- .002] | 2.8   |
| 14 AWG    | 1.96+/-0.05 [.077+/- .002] | 6.5   |
| 16 AWG    | 1.73+/-0.05 [.068+/- .002] | 9.0   |

- <sup>1</sup> RECOMMENDED SPARE PARTS
- <sup>2</sup> GREASE BEARING SURFACES LIGHTLY
- 3. LUBRICATE DAILY PER THE APPLICATOR INSTRUCTION SHEET SUPPLIED WITH THE APPLICATOR.
- <sup>4</sup> APPLICATOR SPECIFIC DATA TO BE ENTERED INTO BLANK MEMORY CHIP AT ASSEMBLY. SEE BELOW FOR PART NUMBER:  
 PNEUMATIC FEED WITH "SMART APPLICATOR" CONVERSION: 8-2150259-4  
 SERVO FEED WITH "FINE CRIMP HEIGHT ADJUST": 8-2150259-5  
 SERVO FEED WITH "NON-CRIMP HEIGHT ADJUST": 8-2150259-6
- 5. ADJUSTMENT OF THE STRIPPER MAY BE REQUIRED WHEN MOVING THE APPLICATOR BETWEEN BENCH AND LEADMAKER APPLICATIONS.
- <sup>6</sup> APPLY PART NUMBER 1-23419-5 LOCTITE TO THREADS OF ITEM 50.
- <sup>7</sup> GREASE THREADS, GROOVE AND O-RING ON ITEMS 35 & 252.
- <sup>8</sup> MAGNET, ITEM 166 MUST BE ORIENTED CORRECTLY IN ORDER TO PROPERLY ACTUATE THE COUNTER.
- <sup>9</sup> CRIMP HEIGHT REFERENCE SETTING WAS THE SETTING USED WHEN THE APPLICATOR WAS QUALIFIED AT THE FACTORY. ADJUSTMENT MAY BE NECESSARY WHEN RUNNING APPLICATOR IN THE FIELD.
- <sup>10</sup> TERMINAL PITCH NOT COMPATIBLE WITH MECHANICAL FEED.
- <sup>11</sup> WHEN ASSEMBLING -6 NON-CRIMP HEIGHT ADJUST APPLICATOR USE SHIM PACK 2119957-2 TO ALIGN APPLICATOR'S MAXIMUM WIRE CRIMP HEIGHT AT NORMAL TERMINATOR SHUT HEIGHT
- <sup>12</sup> CUT TO LENGTH AT ASSEMBLY.

**\*WARNING**  
 ON INSTALLATION, SET WIRE DISC, ITEM 40 TO LARGEST WIRE SIZE SETTING. USE OF SETTINGS BELOW MINIMUM REQUIRED CRIMP HEIGHT SETTING WILL CAUSE DAMAGE TO CRIMP TOOLING.

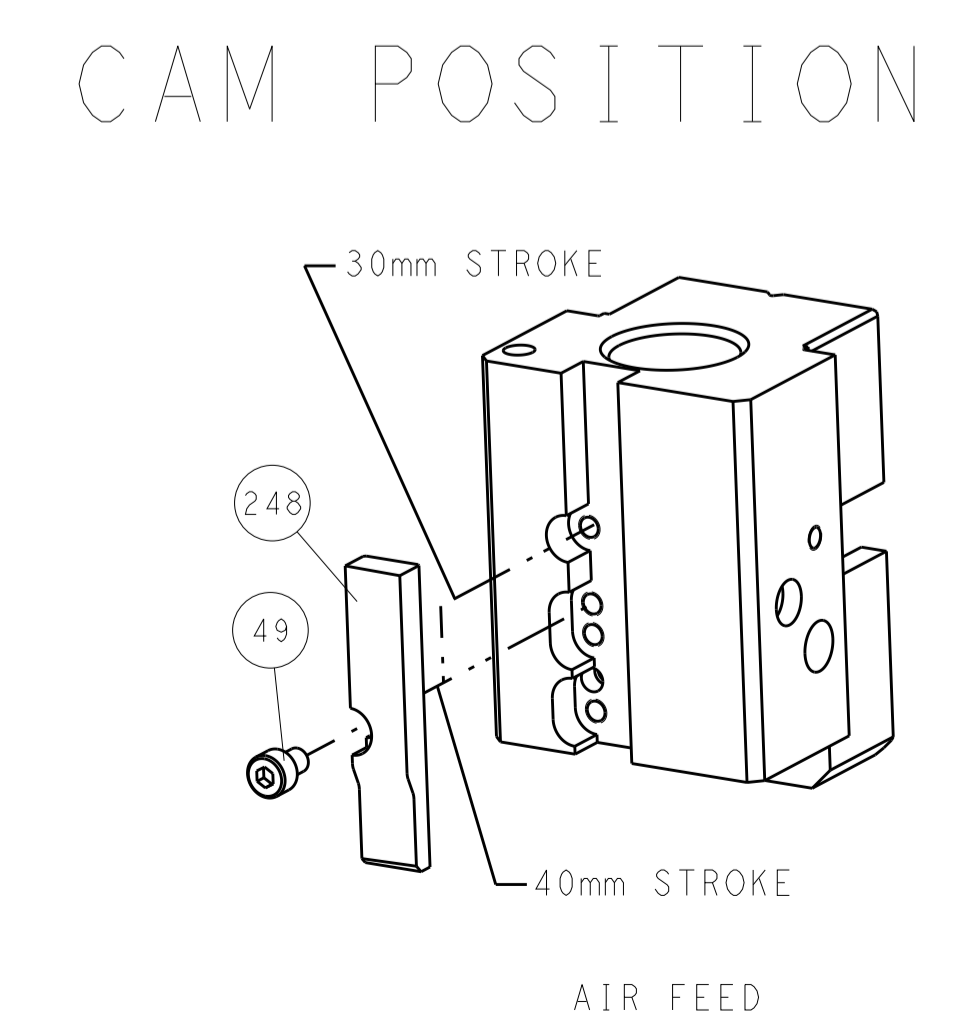
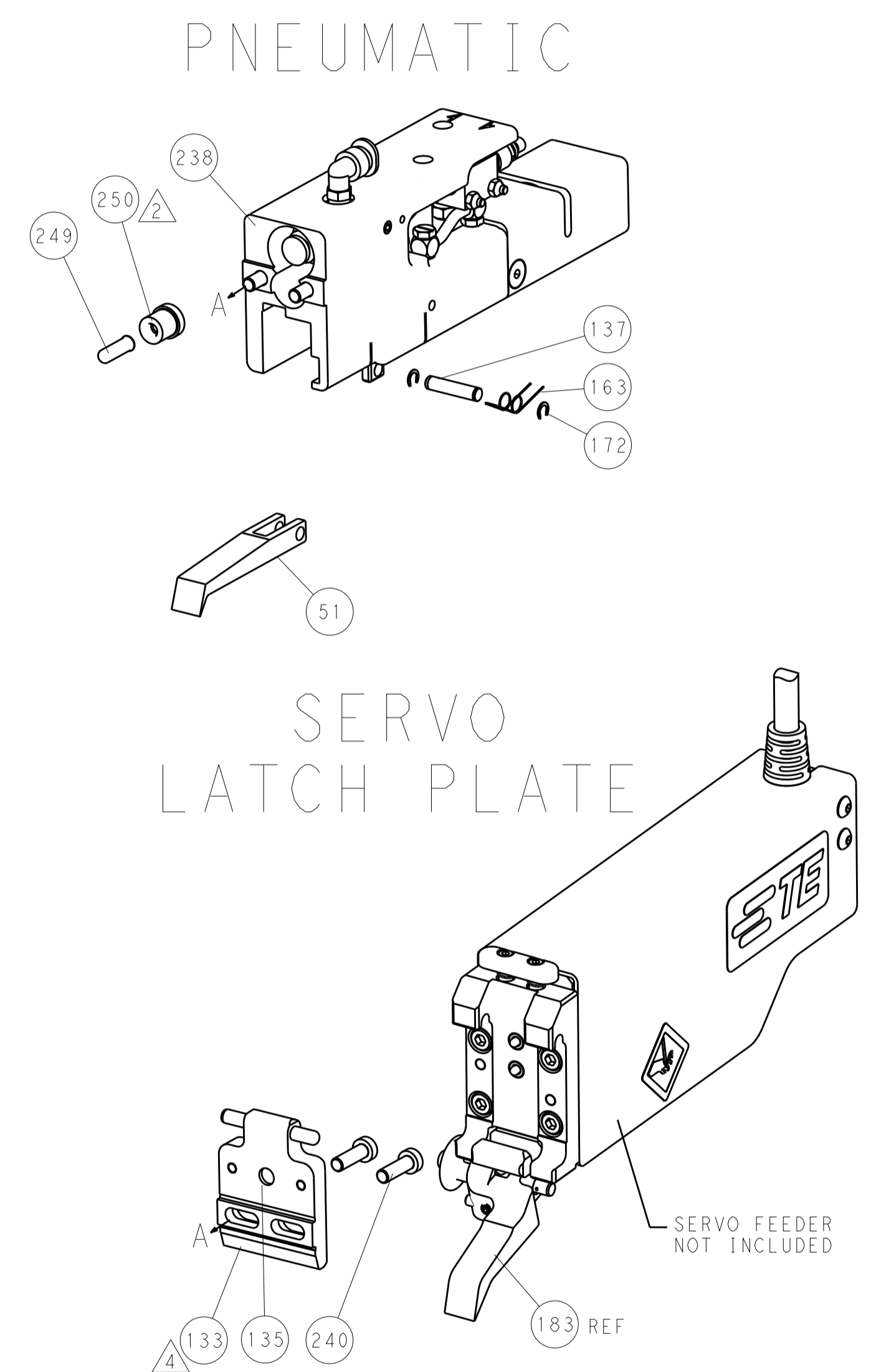
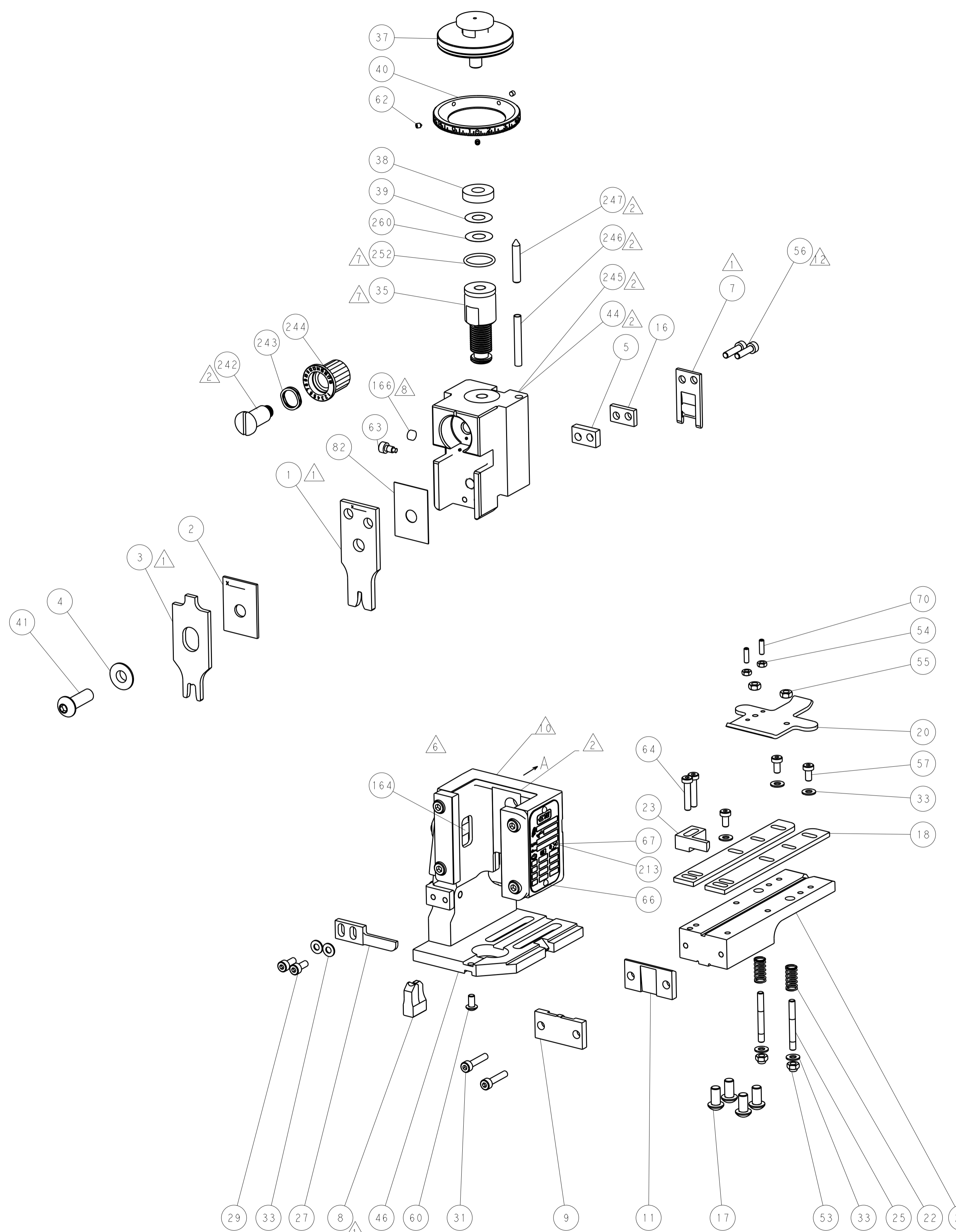
ATLANTIC VERSION  
 Shown on sheets 1 of 4 & 2 of 4  
 (Pacific version shown on sheets 3 of 4 & 4 of 4)

| SET UP GAUGE | LOC | DIST | REVISIONS |          |           |      |
|--------------|-----|------|-----------|----------|-----------|------|
| 2119599-2    | A   | 66   | REV       | DATE     | BY        | APPV |
|              |     |      | A         | RELEASED | 13JUL2012 | BH   |

|     |              |        |    |    |             |                                      |         |
|-----|--------------|--------|----|----|-------------|--------------------------------------|---------|
| -   | -            | 1      | -  | -  | 2119957-2   | APPLICATOR SHIM PACK                 | 260     |
| -   | 1            | -      | 1  | 1  | 8-21084-0   | O-RING, .676 ID, .070 DIA. MAT.      | 252     |
| -   | -            | -      | -  | 1  | 2119640-1   | PUSH ROD, AIR FEED                   | 250     |
| -   | -            | -      | -  | 1  | 2079988-1   | BUSHING, LCH5-12, MISUMI             | 249     |
| -   | -            | -      | -  | 1  | 2119641-1   | FEED CAM, AIR FEED                   | 248     |
| -   | 1            | -      | 1  | 1  | 2119798-1   | DETENT PIN                           | 247     |
| -   | 1            | -      | 1  | 1  | 1-22279-3   | SPRING, COMPRESSION                  | 246     |
| -   | -            | 1      | -  | -  | 2119759-1   | RAM, AMP STYLE, END FEED, NON-ADJUST | 245     |
| -   | 1            | 1      | 1  | 1  | 2119082-9   | CAM, SNAIL, INSULATION ADJUSTMENT    | 244     |
| -   | 1            | 1      | 1  | 1  | 2079764-1   | WASHER, WAVE SPRING, CREST-TO-CREST  | 243     |
| -   | 1            | 1      | 1  | 1  | 2119083-1   | RETAINER, INSULATION DIAL            | 242     |
| -   | -            | 2      | 2  | -  | 2168400-7   | SHCS, LOW HEAD, RoHS, M5 X 10        | 240     |
| -   | -            | -      | -  | 1  | 2063440-2   | AIR FEED MODULE                      | 238     |
| -   | -            | 1      | 1  | -  | 2119740-2   | TAG, IDENTIFICATION                  | 213     |
| -   | -            | REFREF | -  | -  | 1901697-1   | FEED FINGER ASSEMBLY, EF             | 183     |
| -   | -            | -      | -  | 2  | 21045-3     | RING, RETAIN, EXTERN, 3/16 CRESCENT  | 172     |
| -   | 1            | 1      | 1  | 1  | 994969-1    | MAGNET, RARE EARTH HIGH ENERGY       | 166     |
| -   | REFREFREFREF | -      | -  | -  | 994970-2    | COUNTER, MAGNETIC                    | 164     |
| -   | -            | -      | -  | 1  | 240638-1    | SPRING, FEED FINGER                  | 163     |
| -   | -            | -      | -  | 1  | 3-23627-7   | PIN, RETAIN, GRVD, 3/16 X .854       | 137     |
| -   | -            | REFREF | -  | -  | SEE NOTE 4  | MEMORY CHIP, PROGRAMMED              | 135     |
| -   | -            | 1      | 1  | -  | 1633743-1   | SERVO FEED LATCH ASM                 | 133     |
| -   | 1            | 1      | 1  | 1  | 455888-3    | SPACER, CRIMPER                      | 82      |
| -   | 1            | 1      | 1  | 1  | 2119956-2   | DOCUMENTATION PACKAGE                | 71      |
| -   | 2            | 2      | 2  | 2  | 2-18032-2   | SCR, SET, FLT POINT M3 X 10.0        | 70      |
| -   | 1            | -      | -  | 1  | 2119740-1   | TAG, IDENTIFICATION                  | 67      |
| -   | 2            | 2      | 2  | 2  | 2168078-1   | SCREW, DRIVE, RH, RoHS               | 66      |
| -   | 2            | 2      | 2  | 2  | 2168400-5   | SHCS, LOW HEAD, RoHS, M4 X 20        | 64      |
| -   | 1            | -      | 1  | 1  | 2119793-1   | LIMITER, ADJUSTMENT BOLT             | 63      |
| -   | 3            | -      | 3  | 3  | 992763-5    | SCR, SET, SOC, CONE POINT, M3 x 4.0  | 62      |
| -   | 1            | 1      | 1  | 1  | 2079383-4   | SCR, BHSC, RoHS (M4 X 8)             | 60      |
| -   | 3            | 3      | 3  | 3  | 2168400-4   | SHCS, LOW HEAD, RoHS, M4 X 8         | 57      |
| -   | 2            | 2      | 2  | 2  | 2168083-8   | SCR, SKT HD CAP, RoHS, M4 X 16       | 56      |
| -   | 2            | 2      | 2  | 2  | 5018030-2   | NUT, HEX, REG, RoHS, M4              | 55      |
| -   | 2            | 2      | 2  | 2  | 5018030-1   | NUT, HEX, REG, RoHS, M3              | 54      |
| -   | 2            | 2      | 2  | 2  | 986965-8    | NUT, LOCK, HEX, TORQUE (M4)          | 53      |
| -   | -            | -      | -  | 1  | 2119792-1   | PAWL, EF, AIR                        | 51      |
| -   | 1            | 1      | 1  | 1  | 2119655-5   | APPLICATOR BASIC ASSEMBLY, EF        | 46      |
| -   | 1            | -      | 1  | 1  | 2119369-1   | RAM, AMP STYLE, END FEED             | 44      |
| -   | 1            | 1      | 1  | 1  | 2079383-7   | SCR, BHSC, RoHS (M8 X 25)            | 41      |
| -   | 1            | -      | 1  | 1  | 2119645-1   | DISC, NUMBERED FA WIRE ADJUSTMENT    | 40      |
| -   | 1            | -      | 1  | 1  | 2119957-1   | APPLICATOR SHIM PACK                 | 39      |
| -   | 1            | 1      | 1  | 1  | 2119644-2   | RAM WASHER, PRECISION                | 38      |
| -   | 1            | 1      | 1  | 1  | 2119085-1   | FA HEAD, ATLANTIC STYLE              | 37      |
| -   | 1            | -      | 1  | 1  | 2119092-1   | BOLT, ADJUSTMENT                     | 35      |
| -   | 7            | 7      | 7  | 7  | 1-18028-2   | WASHER, FLAT, REG M4                 | 33      |
| -   | 2            | 2      | 2  | 2  | 2168083-9   | SCR, SKT HD CAP, RoHS, M4 X 20       | 31      |
| -   | 2            | 2      | 2  | 2  | 1-2168083-0 | SCR, SKT HD CAP, RoHS, M4 X 10       | 29      |
| -   | 1            | 1      | 1  | 1  | 240639-1    | STRIPPER (MACHINING)                 | 27      |
| -   | 2            | 2      | 2  | 2  | 1320906-1   | STUD, THREADED                       | 25      |
| -   | 1            | 1      | 1  | 1  | 1752371-3   | PLATE, STRIP GUIDE                   | 24      |
| -   | 1            | 1      | 1  | 1  | 240825-1    | PLATE, STRIP HOLD DOWN               | 23      |
| -   | 2            | 2      | 2  | 2  | 2-22281-3   | SPRING, COMPRESSION                  | 22      |
| -   | 1            | 1      | 1  | 1  | 1752373-4   | DRAG                                 | 20      |
| -   | 2            | 2      | 2  | 2  | 1901259-6   | GUIDE, LOWER STRIP                   | 18      |
| -   | 4            | 4      | 4  | 4  | 1-2079383-1 | SCR, BHSC, RoHS (M6 X 12)            | 17      |
| -   | 1            | 1      | 1  | 1  | 240641-8    | SPACER                               | 16      |
| -   | 1            | 1      | 1  | 1  | 240833-4    | PLATE, REAR SHEAR                    | 11      |
| -   | -            | -      | -  | -  | -           | -                                    | 10      |
| -   | 1            | 1      | 1  | 1  | 690495-3    | PLATE, FRONT SHEAR                   | 9       |
| -   | 1            | 1      | 1  | 1  | 1-1803000-7 | ANVIL, COMBINATION, END FEED         | 8       |
| -   | 1            | 1      | 1  | 1  | 5-690474-1  | BLADE, SLUG                          | 7       |
| -   | 1            | 1      | 1  | 1  | 2-240641-9  | SPACER                               | 5       |
| -   | 1            | 1      | 1  | 1  | 238009-1    | BLOCK, FL CRIMPER SPACER             | 4       |
| -   | 1            | 1      | 1  | 1  | 2-1633961-5 | CRIMPER, INSULATION F PREMIUM        | 3       |
| -   | 1            | 1      | 1  | 1  | 1-455888-5  | SPACER, CRIMPER                      | 2       |
| -   | 1            | 1      | 1  | 1  | 4-1633305-1 | CRIMPER, WIRE PREMIUM                | 1       |
| -77 | -7           | -6     | -5 | -2 | PART NO     | DESCRIPTION                          | ITEM NO |

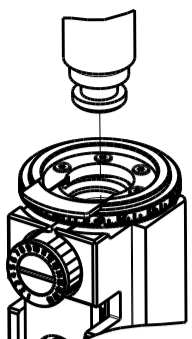
| DIMENSIONS: |           | TOLERANCES UNLESS OTHERWISE SPECIFIED: |             | DWG          |               | NAME          |        |
|-------------|-----------|--|-------------|--------------|---------------|---------------|--------|
| mm          | 0 PLC ±.5 | 1 PLC ±0.5                             | 2 PLC ±0.13 | 3 PLC ±0.013 | 4 PLC ±0.0001 | ANGLES ±.0001 | FINISH |
| MATERIAL    |           |  |             | WEIGHT       |               | SCALE         |        |
| -           |           |  |             | -            |               | 1:1           |        |
| -           |           |  |             | -            |               | SHEET 1 OF 4  |        |
| -           |           |  |             | -            |               | REV A         |        |


| LOC | DIST | REV | DATE | BY | APPV |
|-----|------|-----|------|----|------|
| A   | 66   |     |      |    |      |

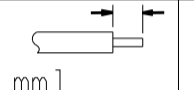



**ATLANTIC VERSION**  
 Shown on sheets 1 of 4 & 2 of 4  
 (Pacific version shown on sheets 3 of 4 & 4 of 4)


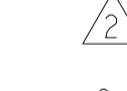




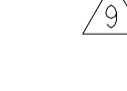
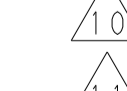
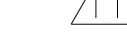
| DIMENSIONS: |            | TOLERANCES UNLESS OTHERWISE SPECIFIED: |             | REVISIONS                              |              |
|-------------|------------|--|-------------|--|--------------|
| mm          | 0 PLC ±0.5 | 1 PLC ±0.5                             | 2 PLC ±0.13 | 3 PLC ±0.013                           | 4 PLC ±0.001 |
| ANGLES      | ±0.0001    |  |             |  |              |
| MATERIAL:   |            | FINISH:                                |             | WEIGHT:                                |              |
|             |            |  |             | Customer Accessible Production Drawing |              |
| SCALE: 1:1  |            | SHEET 2 OF 4                           |             | REV A                                  |              |

| PACIFIC VERSION TERMINATOR INTERFACE ADAPTER                                      | PART NUMBER | REVISION | DESCRIPTION              | FEED TYPE                      | APPLICATOR STYLE CONVERSION CHART |                       |           |             |           |   |                        |
|---|-------------|----------|--------------------------|--------------------------------|-----------------------------------|-----------------------|-----------|-------------|-----------|---|------------------------|
|   |             |          |                          |                                | CONVERT TO                        | PART NUMBERS REQUIRED |           |             |           |   |                        |
|  | 2-2150259-2 | A        | FINE CRIMP HEIGHT ADJUST | PNEUMATIC                      | SERVO LATCH PLATE                 | 2119951-1             | 1901697-1 | 8-2150259-5 | -         | - | 2168400-7 (QUANTITY 2) |
|   |             |          |                          |                                | SMART APPLICATOR                  | 2161326-1             | -         | 8-2150259-4 | -         | - | -                      |
|   | 2-2150259-5 | A        | FINE CRIMP HEIGHT ADJUST | SERVO LATCH PLATE <sup>4</sup> | PNEUMATIC FEED                    | 2119950-1             | 2119792-1 | -           | 2119641-2 | - | 2063440-2              |
|   | 2-2150259-7 | A        | FINE CRIMP HEIGHT ADJUST | NONE                           | -                                 | -                     | -         | -           | -         | - | -                      |
|   | 7-2150259-7 | A        | CRIMP TOOLING KIT        | -                              | -                                 | -                     | -         | -           | -         | - | -                      |

| APPLICATOR DATA  |                |      |
|--|----------------|------|
| CRIMP  | SIZE           | TYPE |
| WIRE   | 2.79 mm [1.10] | F    |
| INSUL  | 6.35 mm [2.50] | F    |
| APPLICATOR INSTRUCTIONS<br>408-10390  |                |      |

| TERMINAL DATA: TE TERMINAL                            |   | TE CRIMP SPECIFICATION           |   |
|---|---|----------------------------------|---|
| TERMINAL NAME: RECEPTACLE, FASTIN-FASTON, .312 SERIES |   |                                  |   |
| WIRE STRIP LENGTH                                     |  | INSULATION DIAMETER RANGE        |  |
| .170-.203 IN [4.32-5.16 mm]                           |   | ∅.000-.160 IN [0.00-4.06 mm] MAX |   |
| TERMINAL APPLICATION SPECIFICATION                    | 114-2065  | -                                | -   |
| TERMINALS APPLIED                                     |   |                                  |   |
| TE TERMINAL   | TE TERMINAL   | TE TERMINAL                      | TE TERMINAL   |
| 63813-1   |   |                                  |   |

| WIRE SIZE | CRIMP HEIGHT mm [INCH]      | CRIMP HEIGHT REFERENCE SETTING <sup>9</sup> |
|-----------|-----------------------------|---|
| 12 AWG    | 2.31+/-0.05 [0.091+/-0.002] | 2.8   |
| 14 AWG    | 1.96+/-0.05 [0.077+/-0.002] | 6.5   |
| 16 AWG    | 1.73+/-0.05 [0.068+/-0.002] | 9.0   |

-  RECOMMENDED SPARE PARTS
-  GREASE BEARING SURFACES LIGHTLY
- 3. LUBRICATE DAILY PER THE APPLICATOR INSTRUCTION SHEET SUPPLIED WITH THE APPLICATOR.
-  APPLICATOR SPECIFIC DATA TO BE ENTERED INTO BLANK MEMORY CHIP AT ASSEMBLY. SEE BELOW FOR PART NUMBER:  
 PNEUMATIC FEED WITH "SMART APPLICATOR" CONVERSION: 8-2150259-4  
 SERVO FEED WITH "FINE CRIMP HEIGHT ADJUST": 8-2150259-5
- 5. ADJUSTMENT OF THE STRIPPER MAY BE REQUIRED WHEN MOVING THE APPLICATOR BETWEEN BENCH AND LEADMAKER APPLICATIONS.
-  APPLY PART NUMBER 1-23419-5 LOCTITE TO THREADS OF ITEM 50.
-  GREASE THREADS, GROOVE AND O-RING ON ITEMS 139 & 153.
-  MAGNET, ITEM 166 MUST BE ORIENTED CORRECTLY IN ORDER TO PROPERLY ACTUATE THE COUNTER.
-  CRIMP HEIGHT REFERENCE SETTING WAS THE SETTING USED WHEN THE APPLICATOR WAS QUALIFIED AT THE FACTORY. ADJUSTMENT MAY BE NECESSARY WHEN RUNNING APPLICATOR IN THE FIELD.
-  TERMINAL PITCH NOT COMPATIBLE WITH MECHANICAL FEED.
-  CUT TO LENGTH AT ASSEMBLY.

**\*WARNING**  
 ON INSTALLATION, SET WIRE DISC, ITEM 40 TO LARGEST WIRE SIZE SETTING. USE OF SETTINGS BELOW MINIMUM REQUIRED CRIMP HEIGHT SETTING WILL CAUSE DAMAGE TO CRIMP TOOLING.

PACIFIC VERSION  
 Shown on sheets 3 of 4 & 4 of 4  
 (Atlantic version shown on sheets 1 of 4 & 2 of 4)

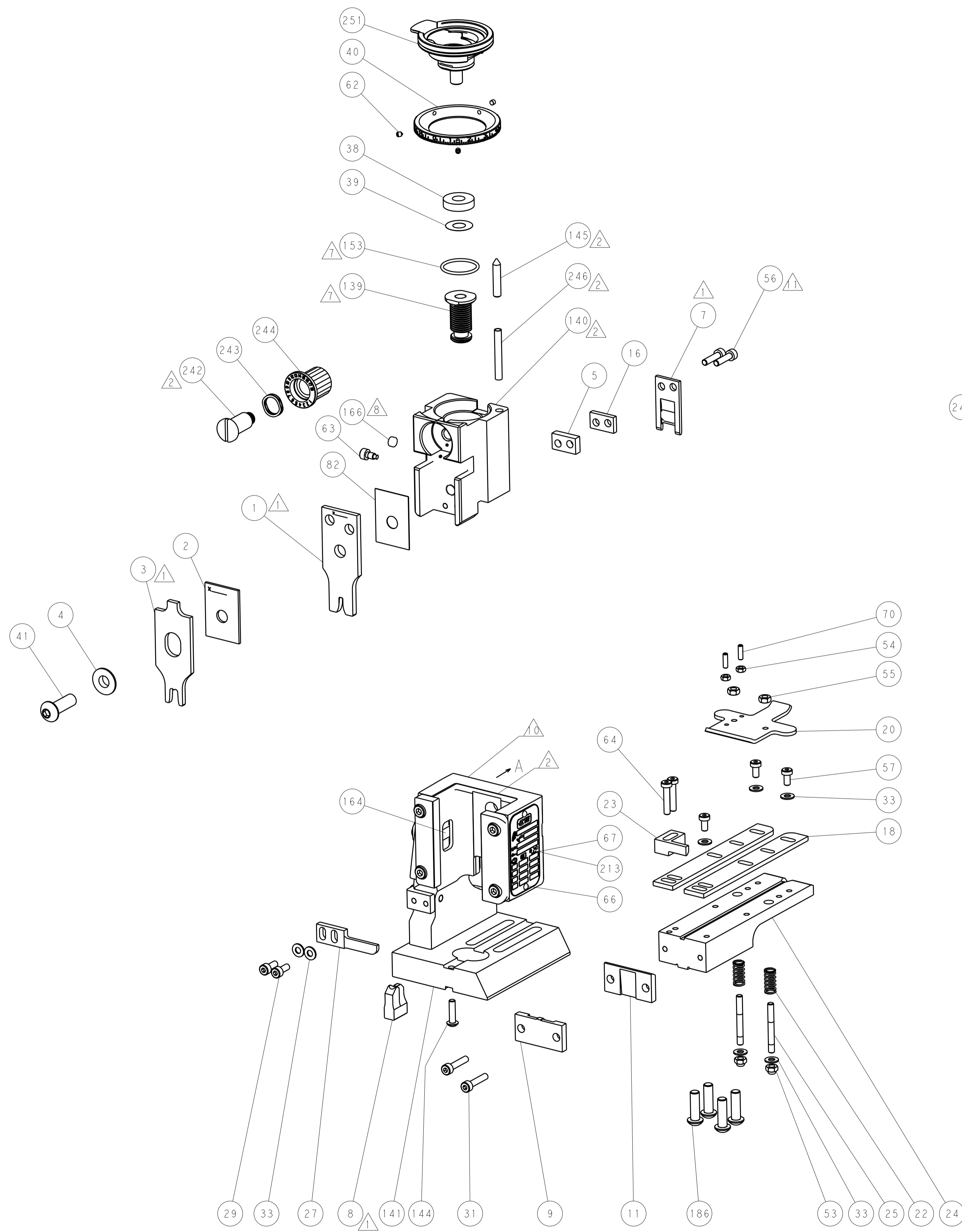
| SET UP GAUGE | LOC | DIST | REVISIONS |             |    |      |
|--------------|-----|------|-----------|-------------|----|------|
| 2119599-2    | A   | 66   | REV       | DATE        | BY | APPV |
|              |     |      | -         | SEE SHEET 1 | -  | -    |

|   |     |     |     |     |             |                                     |     |
|---|-----|-----|-----|-----|-------------|-------------------------------------|-----|
| - | 1   | 1   | 1   | 1   | 2119782-1   | FINE ADJUST HEAD ASM, PACIFIC STYLE | 251 |
| - | -   | -   | 1   | -   | 2119640-1   | PUSH ROD, AIR FEED                  | 250 |
| - | -   | -   | 1   | -   | 2079988-1   | BUSHING, LCH5-12, MISUMI            | 249 |
| - | 1   | 1   | 1   | 1   | 1-22279-3   | SPRING, COMPRESSION                 | 246 |
| - | 1   | 1   | 1   | 1   | 2119082-9   | CAM, SNAIL, INSULATION ADJUSTMENT   | 244 |
| - | 1   | 1   | 1   | 1   | 2079764-1   | WASHER, WAVE SPRING, CREST-TO-CREST | 243 |
| - | 1   | 1   | 1   | 1   | 2119083-1   | RETAINER, INSULATION DIAL           | 242 |
| - | -   | 2   | -   | -   | 2168400-7   | SHCS, LOW HEAD, RoHS, M5 X 10       | 240 |
| - | -   | -   | 1   | -   | 2063440-2   | AIR FEED MODULE                     | 238 |
| - | -   | 1   | -   | -   | 2119740-2   | TAG, IDENTIFICATION                 | 213 |
| - | 4   | 4   | 4   | 4   | 2079383-9   | SCR, BHSC, RoHS (M6 X 20)           | 186 |
| - | -   | REF | -   | -   | 1901697-1   | FEED FINGER ASSEMBLY, EF            | 183 |
| - | -   | -   | 2   | -   | 21045-3     | RING, RETAIN, EXTERN, 3/16 CRESCENT | 172 |
| - | 1   | 1   | 1   | 1   | 994969-1    | MAGNET, RARE EARTH HIGH ENERGY      | 166 |
| - | REF | REF | REF | REF | 994970-2    | COUNTER, MAGNETIC                   | 164 |
| - | -   | -   | 1   | -   | 240638-1    | SPRING, FEED FINGER                 | 163 |
| - | 1   | 1   | 1   | 1   | 8-21084-1   | O-RING, .801 ID, .070 DIA. MAT.     | 153 |
| - | -   | -   | 1   | -   | 2119641-2   | FEED CAM, AIR FEED                  | 152 |
| - | 1   | 1   | 1   | 1   | 2119798-2   | DETENT PIN                          | 145 |
| - | 1   | 1   | 1   | 1   | 2079383-8   | SCR, BHSC, RoHS (M4 X 16)           | 144 |
| - | 1   | 1   | 1   | 1   | 2119655-6   | APPLICATOR BASIC ASSEMBLY, EF       | 141 |
| - | 1   | 1   | 1   | 1   | 2119651-1   | RAM, ASIAN STYLE, END FEED          | 140 |
| - | 1   | 1   | 1   | 1   | 2119092-2   | BOLT, ADJUSTMENT                    | 139 |
| - | -   | -   | 1   | -   | 3-23627-7   | PIN, RETAIN, GRVD, 3/16 X .854      | 137 |
| - | -   | REF | -   | -   | SEE NOTE 4  | MEMORY CHIP, PROGRAMMED             | 135 |
| - | -   | 1   | -   | -   | 1633743-1   | SERVO FEED LATCH ASM                | 133 |
| - | 1   | 1   | 1   | 1   | 455888-3    | SPACER, CRIMPER                     | 82  |
| - | 1   | 1   | 1   | 1   | 2119956-2   | DOCUMENTATION PACKAGE               | 71  |
| - | 2   | 2   | 2   | 2   | 2-18032-2   | SCR, SET, FLT POINT M3 X 10.0       | 70  |
| - | 1   | -   | 1   | 1   | 2119740-1   | TAG, IDENTIFICATION                 | 67  |
| - | 2   | 2   | 2   | 2   | 2168078-1   | SCREW, DRIVE, RH, RoHS              | 66  |
| - | 2   | 2   | 2   | 2   | 2168400-5   | SHCS, LOW HEAD, RoHS, M4 X 20       | 64  |
| - | 1   | 1   | 1   | 1   | 2119793-1   | LIMITER, ADJUSTMENT BOLT            | 63  |
| - | 3   | 3   | 3   | 3   | 992763-5    | SCR, SET, SOC, CONE POINT, M3 x 4.0 | 62  |
| - | 3   | 3   | 3   | 3   | 2168400-4   | SHCS, LOW HEAD, RoHS, M4 X 8        | 57  |
| - | 2   | 2   | 2   | 2   | 2168083-8   | SCR, SKT HD CAP, RoHS, M4 X 16      | 56  |
| - | 2   | 2   | 2   | 2   | 5018030-2   | NUT, HEX, REG, RoHS, M4             | 55  |
| - | 2   | 2   | 2   | 2   | 5018030-1   | NUT, HEX, REG, RoHS, M3             | 54  |
| - | 2   | 2   | 2   | 2   | 986965-8    | NUT, LOCK, HEX, TORQUE (M4)         | 53  |
| - | -   | -   | 1   | -   | 2119792-1   | PAWL, EF, AIR                       | 51  |
| - | 1   | 1   | 1   | 1   | 2079383-7   | SCR, BHSC, RoHS (M8 X 25)           | 41  |
| - | 1   | 1   | 1   | 1   | 2119645-1   | DISC, NUMBERED FA WIRE ADJUSTMENT   | 40  |
| - | 1   | 1   | 1   | 1   | 2119957-1   | APPLICATOR SHIM PACK                | 39  |
| - | 1   | 1   | 1   | 1   | 2119644-2   | RAM WASHER, PRECISION               | 38  |
| - | 7   | 7   | 7   | 7   | 1-18028-2   | WASHER, FLAT, REG M4                | 33  |
| - | 2   | 2   | 2   | 2   | 2168083-9   | SCR, SKT HD CAP, RoHS, M4 X 20      | 31  |
| - | 2   | 2   | 2   | 2   | 1-2168083-0 | SCR, SKT HD CAP, RoHS, M4 X 10      | 29  |
| - | 1   | 1   | 1   | 1   | 240639-1    | STRIPPER (MACHINING)                | 27  |
| - | 2   | 2   | 2   | 2   | 1320906-1   | STUD, THREADED                      | 25  |
| - | 1   | 1   | 1   | 1   | 1752371-3   | PLATE, STRIP GUIDE                  | 24  |
| - | 1   | 1   | 1   | 1   | 240825-1    | PLATE, STRIP HOLD DOWN              | 23  |
| - | 2   | 2   | 2   | 2   | 2-22281-3   | SPRING, COMPRESSION                 | 22  |
| - | 1   | 1   | 1   | 1   | 1752373-4   | DRAG                                | 20  |
| - | 2   | 2   | 2   | 2   | 1901259-6   | GUIDE, LOWER STRIP                  | 18  |
| - | 1   | 1   | 1   | 1   | 240641-8    | SPACER                              | 16  |
| - | 1   | 1   | 1   | 1   | 240833-4    | PLATE, REAR SHEAR                   | 11  |
| - | -   | -   | -   | -   | -           | -                                   | 10  |
| - | 1   | 1   | 1   | 1   | 690495-3    | PLATE, FRONT SHEAR                  | 9   |
| - | 1   | 1   | 1   | 1   | 1-1803000-7 | ANVIL, COMBINATION, END FEED        | 8   |
| - | 1   | 1   | 1   | 1   | 5-690474-1  | BLADE, SLUG                         | 7   |
| - | 1   | 1   | 1   | 1   | 2-240641-9  | SPACER                              | 5   |
| - | 1   | 1   | 1   | 1   | 238009-1    | BLOCK, FL CRIMPER SPACER            | 4   |
| - | 1   | 1   | 1   | 1   | 2-1633961-5 | CRIMPER, INSULATION F PREMIUM       | 3   |
| - | 1   | 1   | 1   | 1   | 1-455888-5  | SPACER, CRIMPER                     | 2   |
| - | 1   | 1   | 1   | 1   | 4-1633305-1 | CRIMPER, WIRE PREMIUM               | 1   |

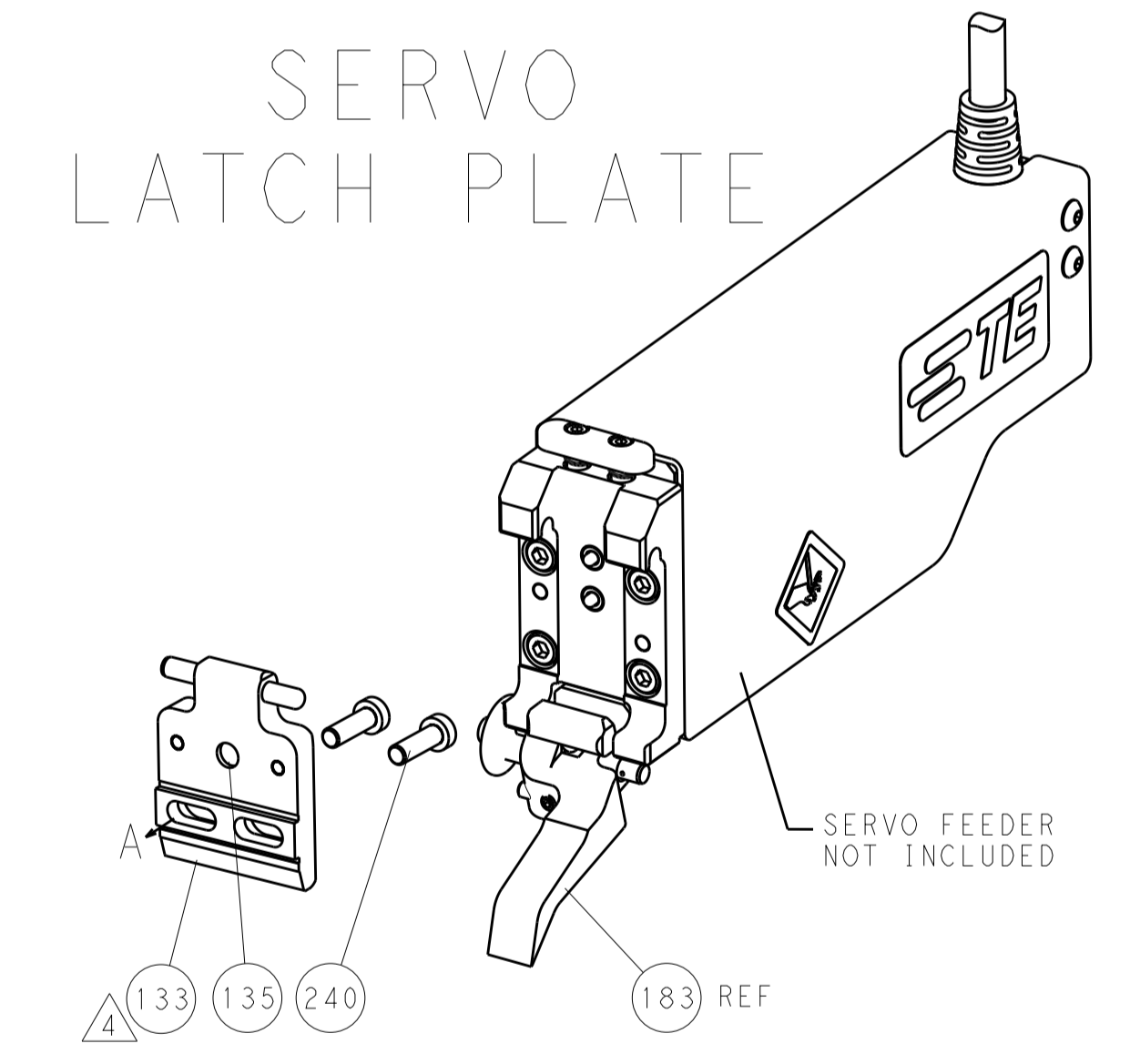
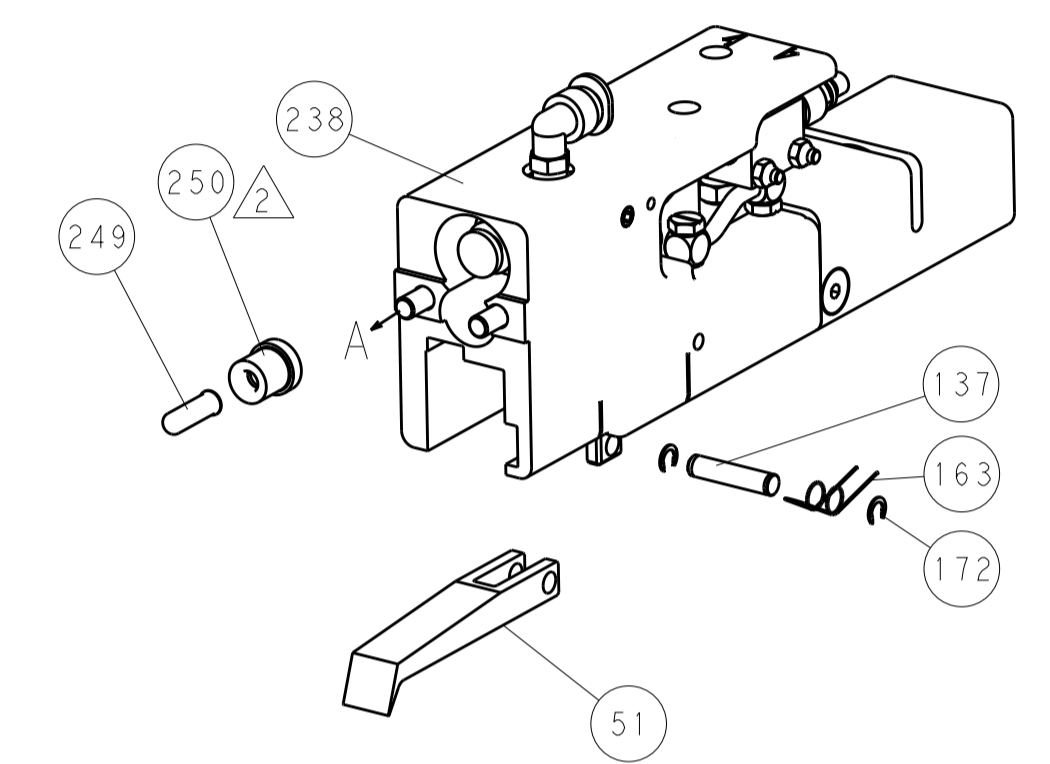
| DIMENSIONS:                            |           | TOLERANCES UNLESS OTHERWISE SPECIFIED: |             | DWG                |              | NAME          |        |
|--|-----------|--|-------------|--------------------|--------------|---------------|--------|
| mm                                     | 0 PLC ±.5 | 1 PLC ±0.5                             | 2 PLC ±0.13 | 3 PLC ±0.013       | 4 PLC ±0.001 | ANGLES ±.0001 | FINISH |
| MATERIAL                               |           | FINISH                                 |             | WEIGHT             |              | SCALE         |        |
|  |           |  |             | A1 00779           |              | C=2150259     |        |
| Customer Accessible Production Drawing |           |  |             | SHEET 3 OF 4 REV A |              |               |        |

| LOC | DIST | REV | DATE | BY | APPV |
|-----|------|-----|------|----|------|
| A   | 66   |     |      |    |      |

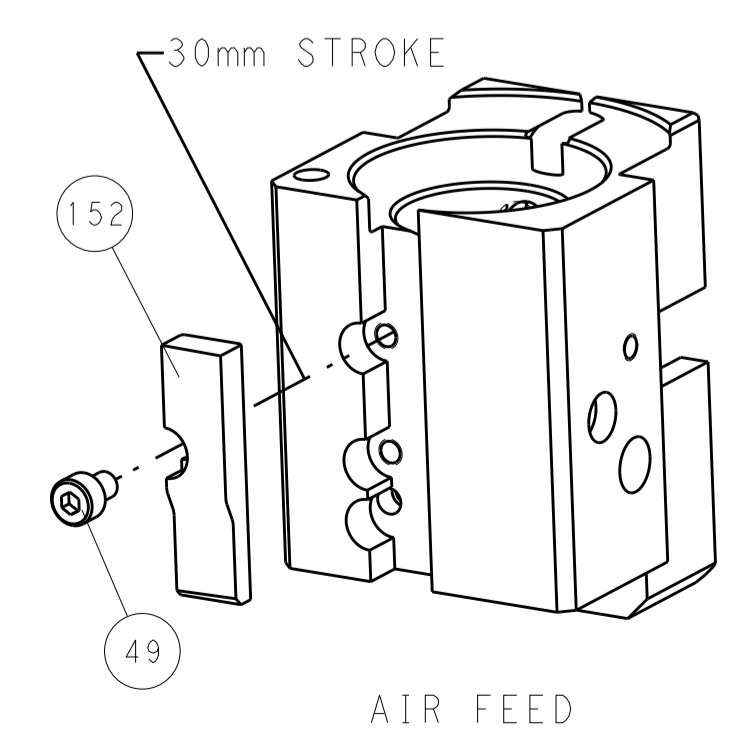
| REVISIONS   |      |    |      |
|-------------|------|----|------|
| REV         | DATE | BY | APPV |
| -           | -    | -  | -    |
| SEE SHEET 1 |      |    |      |



FEED TYPE  
 PNEUMATIC



CAM POSITION



**PACIFIC VERSION**  
 Shown on sheets 3 of 4 & 4 of 4  
 (Atlantic version shown on sheets 1 of 4 & 2 of 4)

|             |  |  |  |  |  |                               |  |
|-------------|--|--|--|--|--|-------------------------------|--|
| DIMENSIONS: |  | TOLERANCES UNLESS OTHERWISE SPECIFIED: |  | OWN: BOB HIGMAN 01JUN2011              |  | TE Connectivity               |  |
| mm          |  | 0 PLC ±0.5                             |  | CHK: T. ELBIN 01JUN2011                |  | Harrisburg, PA 17105-3608     |  |
| FINISH:     |  | 1 PLC ±0.13                            |  | APPV: M. CLIFFORD 01JUN2011            |  | NAME: Ocean End Feed          |  |
| MATERIAL:   |  | 2 PLC ±0.013                           |  | PRODUCT SPEC:                          |  | SIZE: CAGE CODE DRAWING NO:   |  |
|             |  | 3 PLC ±0.001                           |  | APPLICATION SPEC:                      |  | RESTRICTED TO:                |  |
|             |  | 4 PLC ±0.0001                          |  | WEIGHT:                                |  | A 00779 C=2150259             |  |
|             |  | ANGLES:                                |  | Customer Accessible Production Drawing |  | SCALE: 1:1 SHEET 4 OF 4 REV A |  |