

**MATERIALS AND FINISHES:**

**BODY: BRASS**  
**PLATED: GOLD (10μ-in MIN)**  
**OVER NICKEL (100μ-in MIN)**

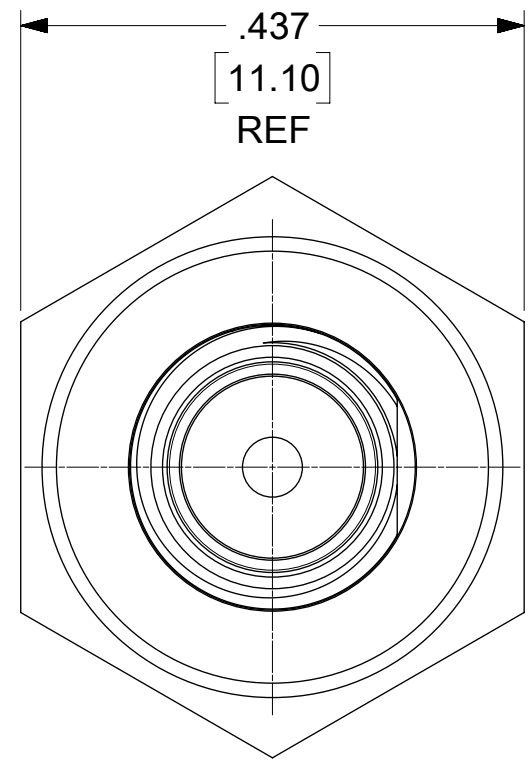
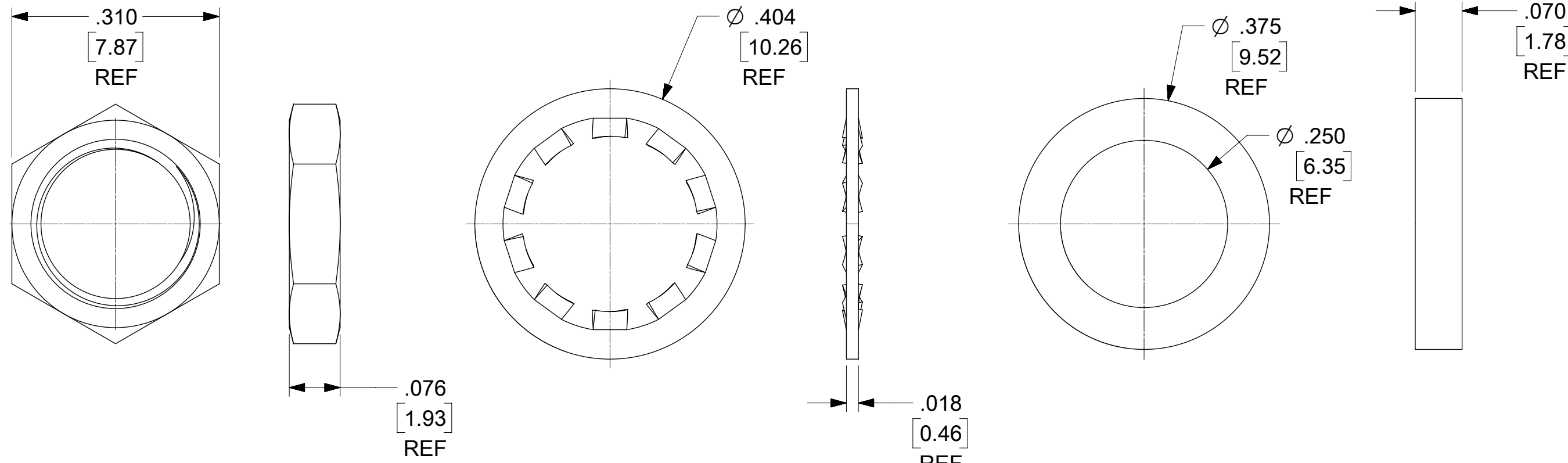
**CENTER CONTACT: BERYLLIUM COPPER**  
**PLATED: GOLD (50μ-in MIN)**  
**OVER NICKEL (100μ-in MIN)**

**INSULATOR: PTFE**

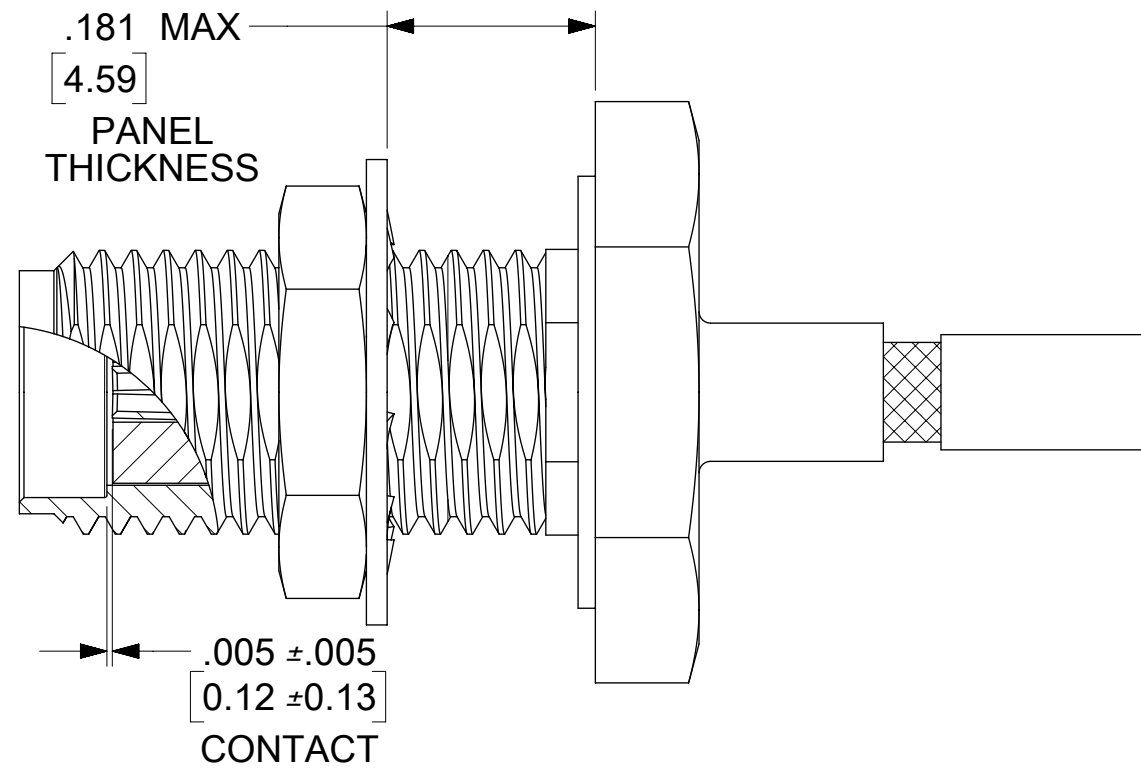
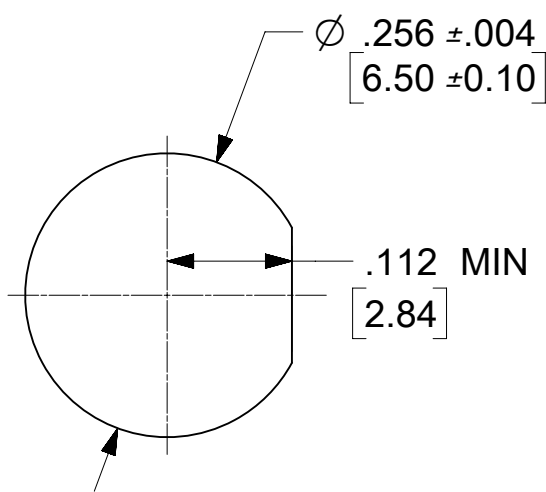
**JAM NUT: BRASS**  
**PLATED: GOLD (1μ-in MIN)**  
**OVER NICKEL (50μ-in MIN)**

**LOCK WASHER: PHOSPHOR BRONZE**  
**PLATED: GOLD (1μ-in MIN)**  
**OVER NICKEL (50μ-in MIN)**

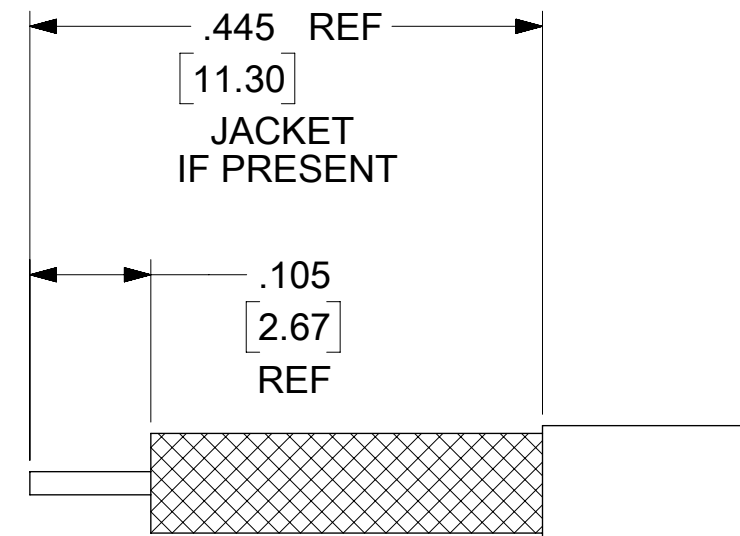
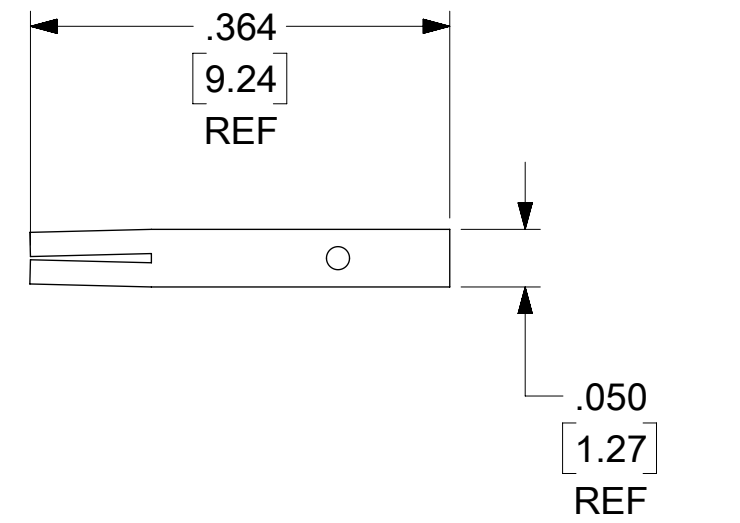
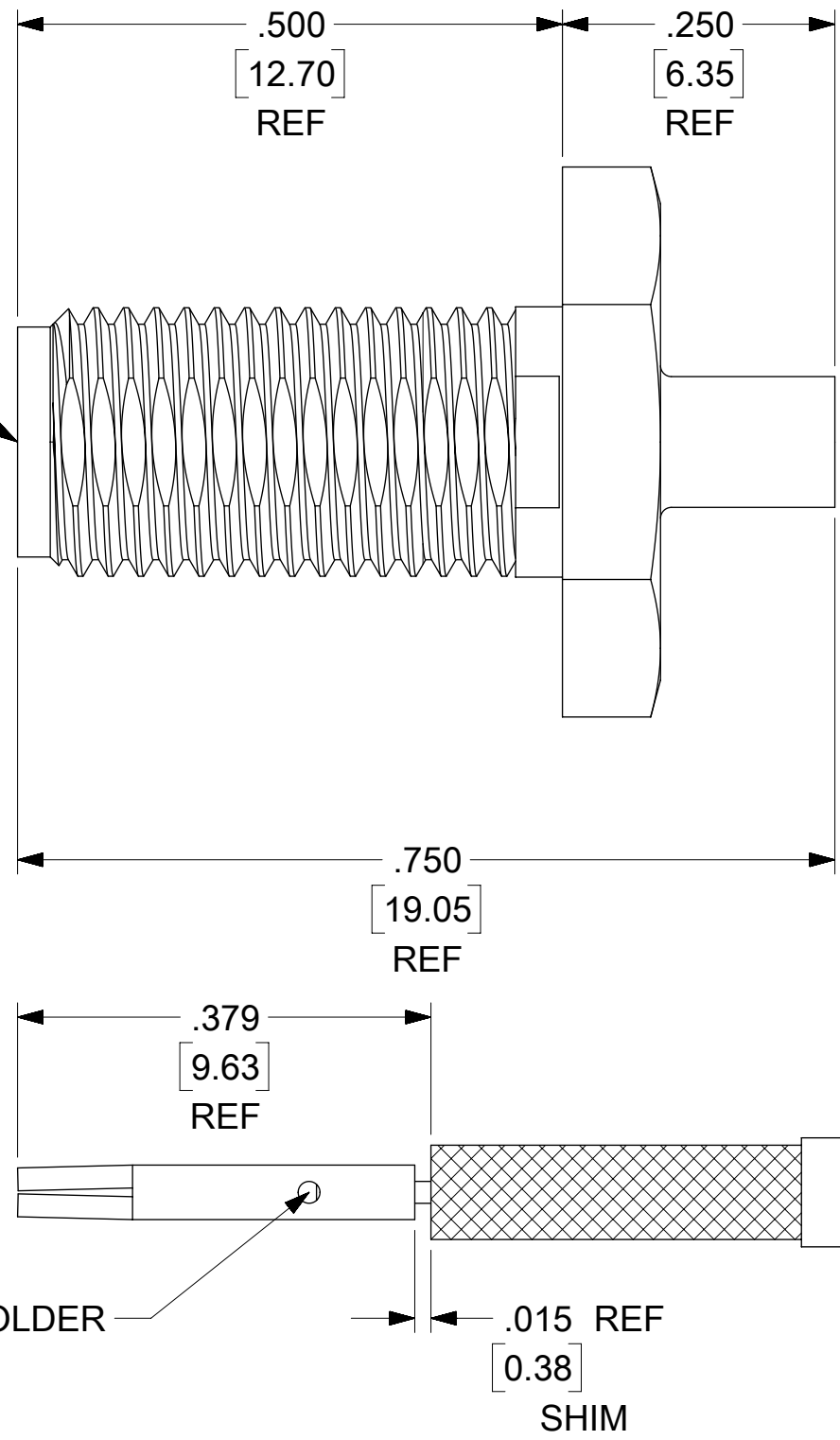
**GASKET: SILICONE RUBBER**



**RECOMMENDED MOUNTING HOLE**



**SMA JACK INTERFACE**



**RECOMMENDED CABLE STRIPPING DIMENSIONS, RG-405 (.086)**

**PART # 73251-1900**

SYMBOLS		THIS DRAWING CONTAINS INFORMATION THAT IS PROPRIETARY TO MOLEX ELECTRONIC TECHNOLOGIES, LLC AND SHOULD NOT BE USED WITHOUT WRITTEN PERMISSION					
∇ = 0	DIMENSION UNITS	SCALE		CURRENT REV DESC: SEE ECM			
∇ = 0	INCH						
∇ = 0	GENERAL TOLERANCES (UNLESS SPECIFIED)						
∇ = 0		MM	INCH				
∇ = 0	4 PLACES ±	±		EC NO: 174360			
∇ = 0	3 PLACES ±	± 0.01		DRWN: PSWAMI02 2018/03/27			
∇ = 0	2 PLACES ±	± 0.25	±	CHK'D: PSWAMI02 2018/04/04			
∇ = 0	1 PLACE ±	±		APPR: AROBERTSON 2018/04/04			
∇ = 0	0 PLACES ±	±		INITIAL REVISION:			
∇ = 0	ANGULAR TOL ± 2.0°			DRWN: PSWAMI02 2018/03/29			
∇ = 0				APPR: AROBERTSON 2018/03/29			
∇ = 0	THIRD ANGLE PROJECTION		DRAWING	SERIES	MATERIAL NUMBER	CUSTOMER	
∇ = 0	DRAFT WHERE APPLICABLE MUST REMAIN WITHIN DIMENSIONS		C-SIZE	73251	732511900		
				DOCUMENT NUMBER		DOC TYPE	
				SD-73251-190		PSD	
				DOC PART	REVISION		
				001	A2		
				SHEET NUMBER			
				1 OF 2			

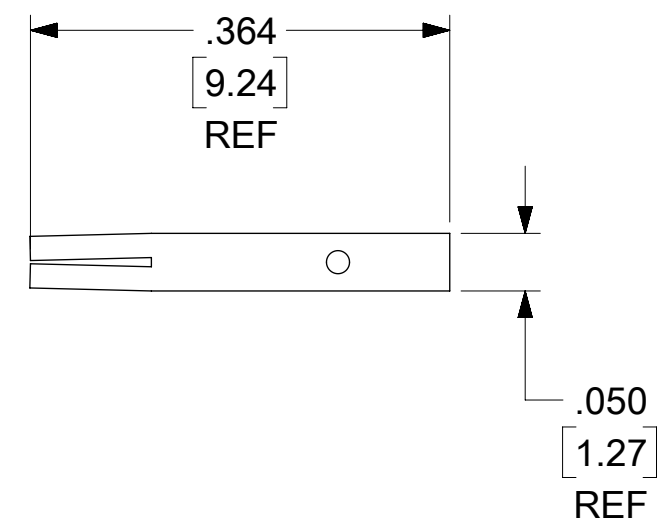
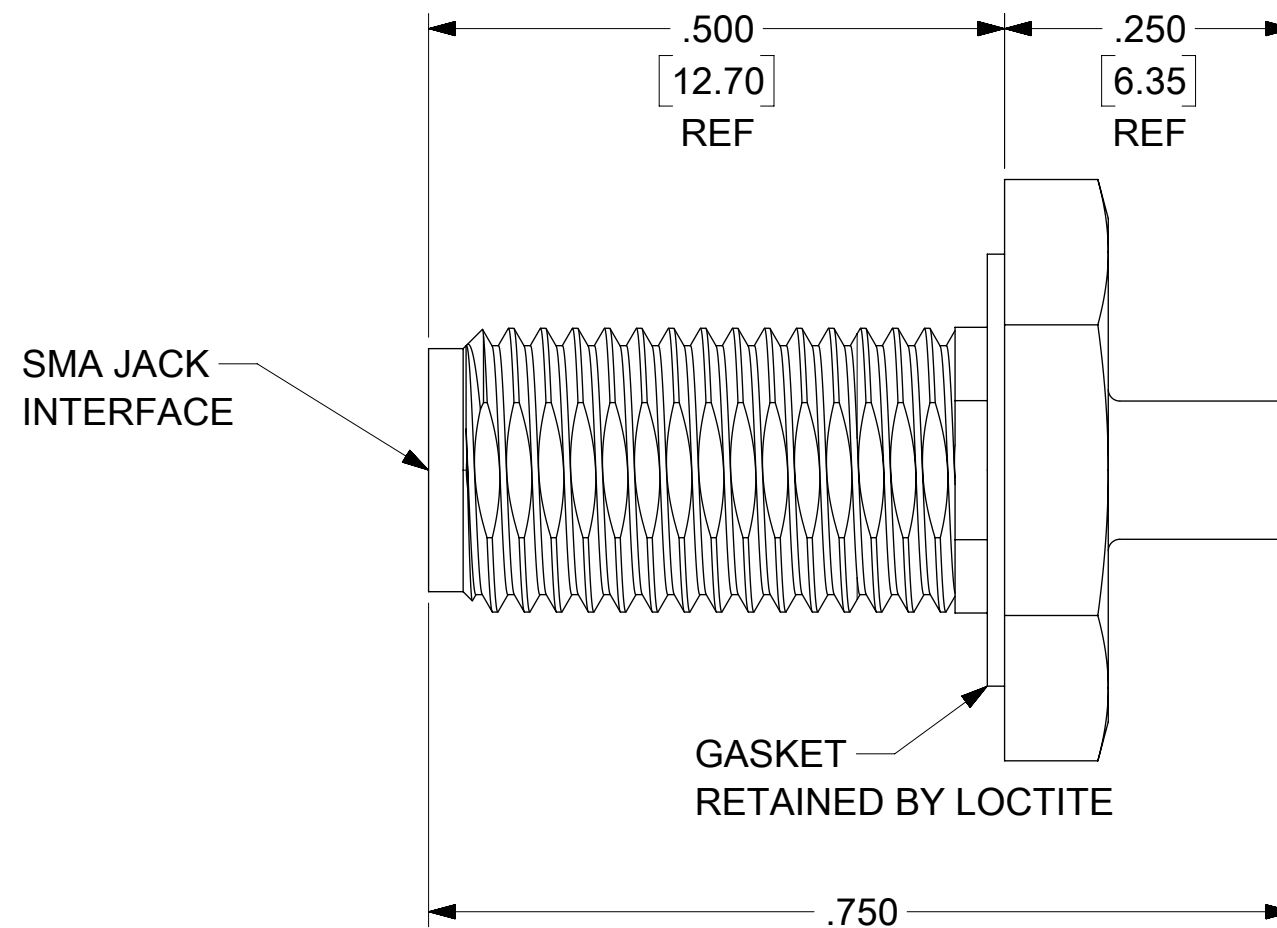
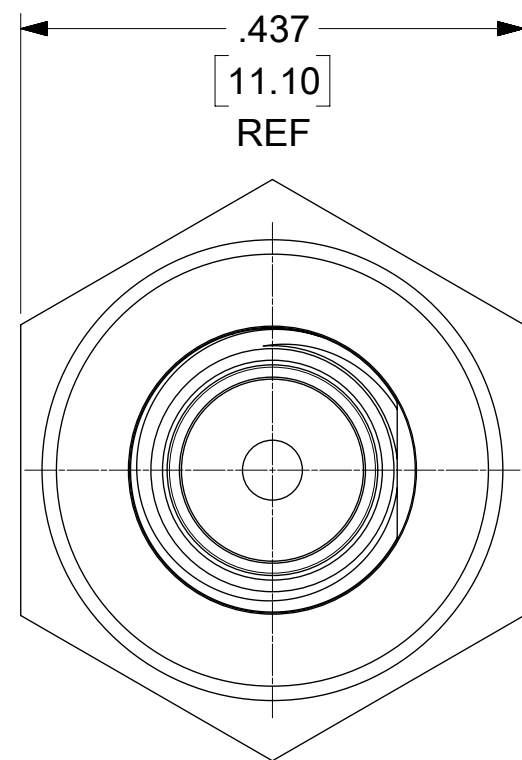
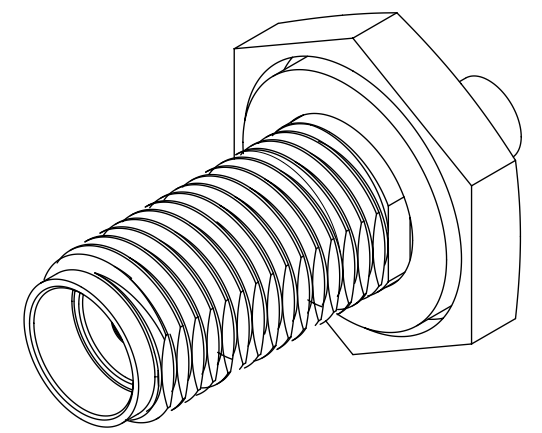
MATERIALS AND FINISHES:

BODY: BRASS  
 PLATED: GOLD (10μ-in MIN)  
 OVER NICKEL (100μ-in MIN)

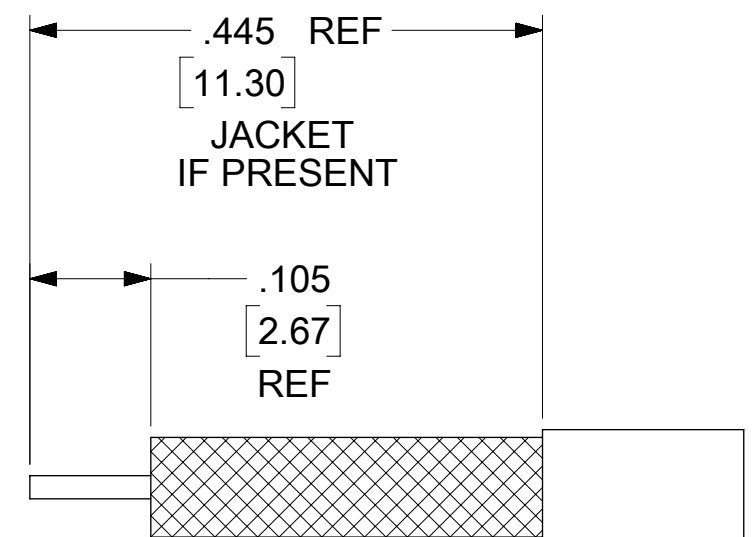
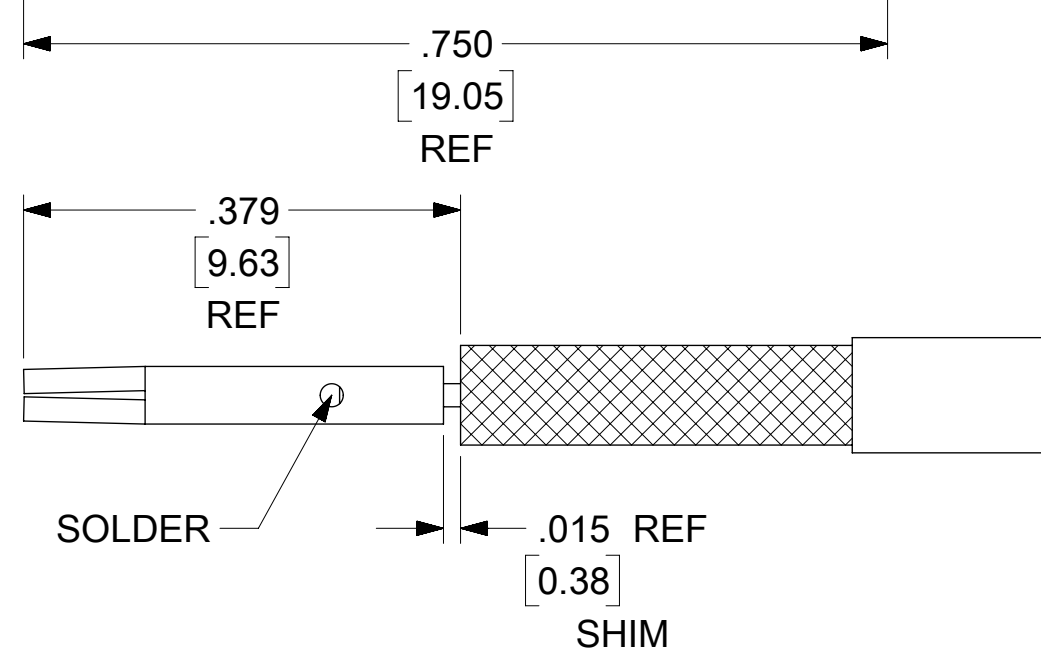
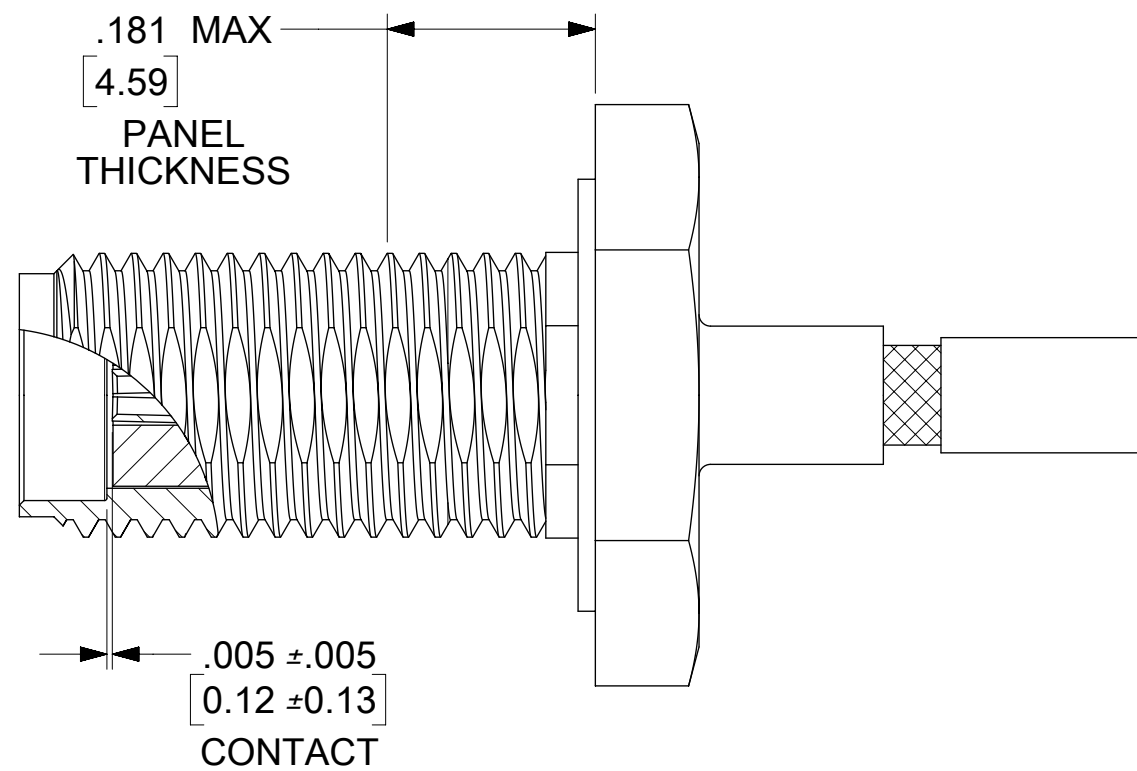
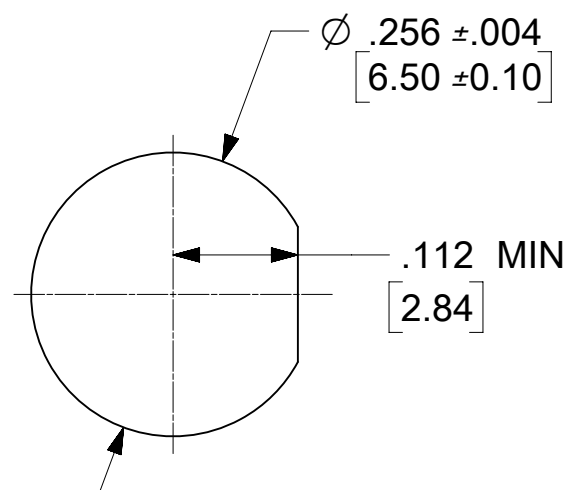
CENTER CONTACT: BERYLLIUM COPPER  
 PLATED: GOLD (50μ-in MIN)  
 OVER NICKEL (100μ-in MIN)

INSULATOR: PTFE

GASKET: SILICONE RUBBER



RECOMMENDED MOUNTING HOLE



RECOMMENDED CABLE STRIPPING DIMENSIONS, RG-405 (.086)

PART # 73251-1901

SYMBOLS ▽ = 0 ▽ = 0 ▽ = 0 ▽ = 0 ▽ = 0 ▽ = 0 ▽ = 0 ▽ = 0 ▽ = 0 ▽ = 0	THIS DRAWING CONTAINS INFORMATION THAT IS PROPRIETARY TO MOLEX ELECTRONIC TECHNOLOGIES, LLC AND SHOULD NOT BE USED WITHOUT WRITTEN PERMISSION		
	DIMENSION UNITS		SCALE
	INCH		CURRENT REV DESC: SEE ECM
	GENERAL TOLERANCES (UNLESS SPECIFIED)		
	MM	INCH	EC NO: 174360
4 PLACES ±	±	±	DRWN: PSWAMI02 2018/03/27
3 PLACES ±	±	± 0.01	CHK'D: PSWAMI02 2018/04/04
2 PLACES ±	0.25 ±	±	APPR: AROBERTSON 2018/04/04
1 PLACE ±	±	±	INITIAL REVISION:
0 PLACES ±	±	±	DRWN: PSWAMI02 2018/03/29
ANGULAR TOL ± 2.0°	± 2.0°	±	APPR: AROBERTSON 2018/03/29
DRAFT WHERE APPLICABLE MUST REMAIN WITHIN DIMENSIONS		THIRD ANGLE PROJECTION	DRAWING C-SIZE
		SERIES 73251	MATERIAL NUMBER 732511900
		CUSTOMER	SHEET NUMBER 2 OF 2

**molex**

SMA JACK STRAIGHT  
 BULKHEAD RG-405 (.086) SMA-JC, EWR-10924

PRODUCT CUSTOMER DRAWING

DOCUMENT NUMBER	DOC TYPE	DOC PART	REVISION
SD-73251-190	PSD	001	A2