

6

5

4

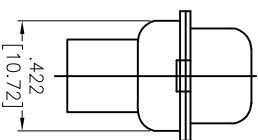
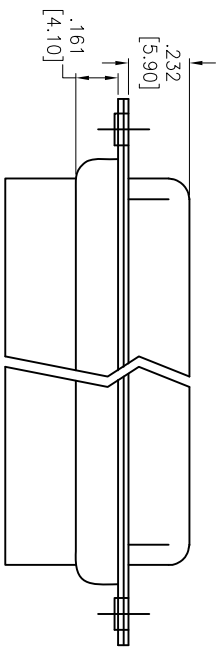
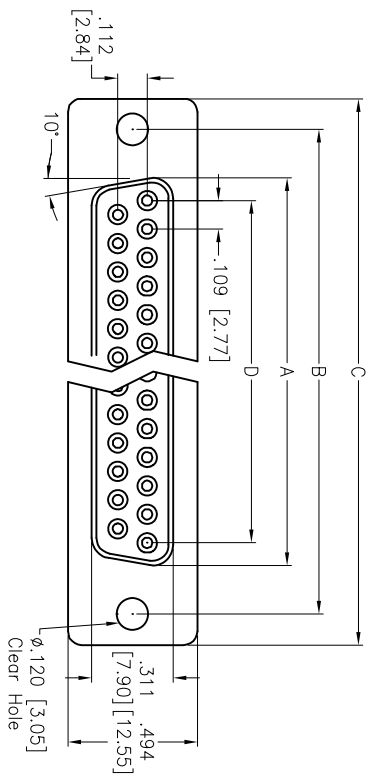
3

2

1

APPROVED: _____
 DATE: _____ TITLE: _____

Rev	AWO #	Description	Date	Appr
-		RELEASED	4/29/05	
A		REDRAWN	04/16/12	



DXXX	NO. OF CONTACTS	DIMENSIONS			
		A	B	C	D
DE09	9	.643 [16.33]	.984 [24.99]	1.213 [30.81]	.436 [11.08]
DA15	15	.971 [24.66]	1.312 [33.32]	1.541 [39.14]	.763 [19.39]
DB25	25	1.511 [38.38]	1.852 [47.04]	2.088 [53.04]	1.309 [33.24]
DC37	37	2.159 [54.84]	2.500 [63.50]	2.729 [69.32]	1.963 [49.86]

SPECIFICATIONS:
 Material: Insulator: PBT, glass reinforced, rated UL 94V-0
 Insulator color: Black
 Contacts: Copper Alloy
 Shell: Steel, Tin plated
 Hardware: Brass, Nickel plated
 Plating: Gold flash over Nickel underplate overall
 Electrical: Operating voltage: 250 VAC max
 Current rating: 1 Amps max
 Contact resistance: 20 mohms max
 Insulation resistance: 1,000 Mohms min
 Dielectric withstanding voltage: 1,000 VAC for 1 minute
 Temperature Rating: Operating temperature: -55°C to +105°C
 Environmental: Lead free, RoHS compliant

ADAM TECH

909 Rahway Avenue, Union, NJ 07083
 Phone: 908-687-5000 Fax: 908-687-5710

TITLE: D-SUB SOCKET, CRIMP AND POKE
 .120 [3.05] MOUNTING HOLES

UNLESS OTHERWISE SPECIFIED
 ALL DIMENSIONS ARE INCHES [MM]
 TOLERANCES: EXCEPT AS NOTED

INCHES	HOLES	DATE
.X ± .10	ØX ± .10	
.XX ± .020	ØXX ± .015	
.XXX ± .015	ØXXX ± .010	

APPROVALS	DATE
DRAWN SS	4/29/05
CHECKED	
APPROVED	

SIZE	PART NO.	REV.
X	DXXX-SR	A

REF: S00087T SCALE: NTS SHEET 1 OF 1



6

5

4

3

2

1