

SET UP GAUGE	LOC	DIST	REVISIONS					
2119599-1	A	66	P	LTB	DESCRIPTION	DATE	DWN	APVD
			A		RELEASE	14SEP2011	L.Z	S.X
			A1		ECR-11-022201	01NOV2011	GH	TE

ATLANTIC VERSION TERMINATOR INTERFACE ADAPTER	PART NUMBER	REVISION	DESCRIPTION	FEED TYPE	APPLICATOR STYLE CONVERSION CHART						
					CONVERT TO	PART NUMBERS REQUIRED					
						PNEUMATIC FEED	2119950-1	1338685-1	5-18022-5	2119641-1	2119799-1
	2151000-1	A	FINE CRIMP HEIGHT ADJUST	MECHANICAL	SERVO LATCH PLATE	2119951-1	-	8-2151000-5	1901094-3	-	2168400-6 (QUANTITY 2)
					SMART APPLICATOR	2161326-1	-	8-2151000-4	-	-	-
	2151000-2	A	FINE CRIMP HEIGHT ADJUST	PNEUMATIC	MECHANICAL FEED	2119949-1	1338685-1	5-18022-5	2119653-1	-	-
					SERVO LATCH PLATE	2119951-1	-	8-2151000-5	1901094-3	-	2168400-6 (QUANTITY 2)
	2151000-5	A	FINE CRIMP HEIGHT ADJUST	SERVO LATCH PLATE	MECHANICAL FEED	2119949-1	1338685-1	5-18022-5	2119653-1	-	-
					PNEUMATIC FEED	2119950-1	1338685-1	5-18022-5	2119641-1	2119799-1	2063440-1
	2151000-6	A	NON-CRIMP HEIGHT ADJUST	SERVO LATCH PLATE	-	-	-	-	-	-	-
					-	-	-	-	-	-	-
	2151000-7	A	FINE CRIMP HEIGHT ADJUST	NONE	-	-	-	-	-	-	-
					-	-	-	-	-	-	-
7-2151000-7	A	CRIMP TOOLING KIT	-	-	-	-	-	-	-	-	-

APPLICATOR DATA		
CRIMP WIRE	SIZE	TYPE
	2.29 mm [.090]	F
	3.30 mm [.130]	F

APPLICATOR INSTRUCTIONS 408-10389

TERMINAL DATA: TE TERMINAL		TE CRIMP SPEC	
TERMINAL NAME: UNIVERSAL MNL SOCKET 0.5-2.0 mm2			
WIRE STRIP LENGTH	INSULATION DIAMETER RANGE		
3.99-4.75 mm [.157-.187]	Ø 1.52-3.30 mm [.060-.130]		
TERMINAL APPLICATION SPECIFICATION	(A)114-1010	(C)114-1012	-
	(B)114-1011	-	-

TERMINALS APPLIED	
TE TERMINAL	TE TERMINAL
(A) 350536-1	(A) 350536-2
(A) 350536-7	(A) 350654-1
(A) 350687-1	(A) 350687-2
(A) 350687-8	(B) 350217-1
(B) 350218-3	(C) 61117-1
(C) 61118-1	(C) 61118-2
(C) 61118-4	(C) 61118-5

WIRE SIZE	CRIMP HEIGHT mm [INCH]	CRIMP HEIGHT REFERENCE SETTING
14 AWG	1.75 +/- 0.05 [.069 +/- .002]	4.4
2.00mm2	1.70 +/- 0.05 [.067 +/- .002]	5.0
1.50mm2	1.57 +/- 0.05 [.062 +/- .002]	6.3
16 AWG	1.50 +/- 0.05 [.059 +/- .002]	7.0
1.25mm2	1.45 +/- 0.05 [.057 +/- .002]	7.5
1.00mm2	1.40 +/- 0.05 [.055 +/- .002]	8.0
18 AWG	1.32 +/- 0.05 [.052 +/- .002]	9.0
0.75mm2	1.30 +/- 0.05 [.051 +/- .002]	9.2
0.50mm2	1.22 +/- 0.05 [.048 +/- .002]	10.0
20 AWG	1.19 +/- 0.05 [.047 +/- .002]	10.3

TERMINAL DATA: TE TERMINAL		TE CRIMP SPEC	
TERMINAL NAME: UNIVERSAL MNL SOCKET 0.5-2.0 mm2			
WIRE STRIP LENGTH	INSULATION DIAMETER RANGE		
4.00-4.75 mm [.157-.187]	Ø 2.00-3.30 mm [.079-.130]		
TERMINAL APPLICATION SPECIFICATION	(D)114-18011	-	-
	-	-	-

TERMINALS APPLIED	
TE TERMINAL	TE TERMINAL
(D) 926882-1	(D) 926882-2
(D) 926882-6	(D) 926882-7
(D) 926883-4	(D) 926883-5
(D) 926883-8	(D) 926887-1
(D) 926887-4	(D) 926887-5
(D) 926887-0	(D) 927965-1
(D) 926887-2	(D) 927965-3

WIRE SIZE	CRIMP HEIGHT mm [INCH]	CRIMP HEIGHT REFERENCE SETTING
14 AWG	1.73 +/- 0.05 [.068 +/- .002]	4.6
2.00mm2	1.70 +/- 0.05 [.067 +/- .002]	5.0
1.50mm2	1.53 +/- 0.05 [.060 +/- .002]	6.5
16 AWG	1.47 +/- 0.05 [.058 +/- .002]	7.2
1.25mm2	1.45 +/- 0.05 [.057 +/- .002]	7.5
1.00mm2	1.37 +/- 0.05 [.054 +/- .002]	8.2
18 AWG	1.30 +/- 0.05 [.051 +/- .002]	9.2
0.75mm2	1.30 +/- 0.05 [.051 +/- .002]	9.2
0.50mm2	1.21 +/- 0.05 [.048 +/- .002]	10.0
20 AWG	1.21 +/- 0.05 [.048 +/- .002]	10.0

***WARNING**
 ON INSTALLATION, SET WIRE DISC, ITEM 40 TO LARGEST WIRE SIZE SETTING. USE OF SETTINGS BELOW MINIMUM REQUIRED CRIMP HEIGHT SETTING WILL CAUSE DAMAGE TO CRIMP TOOLING.

SUPERCEDED BY 2151500-7
 SUPERCEDED BY 2151500-6
 SUPERCEDED BY 2151500-5
 SUPERCEDED BY 2151500-2
 SUPERCEDED BY 2151500-1

ITEM NO	PART NO	DESCRIPTION	ITEM NO
260	2119957-2	APPLICATOR SHIM PACK	260
252	8-21084-0	O-RING, .676 ID, .070 DIA. MAT.	252
250	2119640-1	PUSH ROD, AIR FEED	250
249	2079988-1	BUSHING, LCH5-12, MISUMI	249
248	2119641-1	FEED CAM, AIR FEED	248
247	2119798-1	DETENT PIN	247
246	1-22279-3	SPRING, COMPRESSION	246
245	2119758-1	RAM, AMP STYLE, SIDE FEED, NON-ADJ.	245
244	2119082-9	CAM, SNAIL, INSULATION ADJUSTMENT	244
243	2079764-1	WASHER, WAVE SPRING, CREST-TO-CREST	243
242	2119083-1	RETAINER, INSULATION DIAL	242
241	18023-1	SCR, SKT HD CAP M3 X 5.0	241

ATLANTIC VERSION
 Shown on sheets 1 of 4 & 2 of 4
 (Pacific version shown on sheets 3 of 4 & 4 of 4)

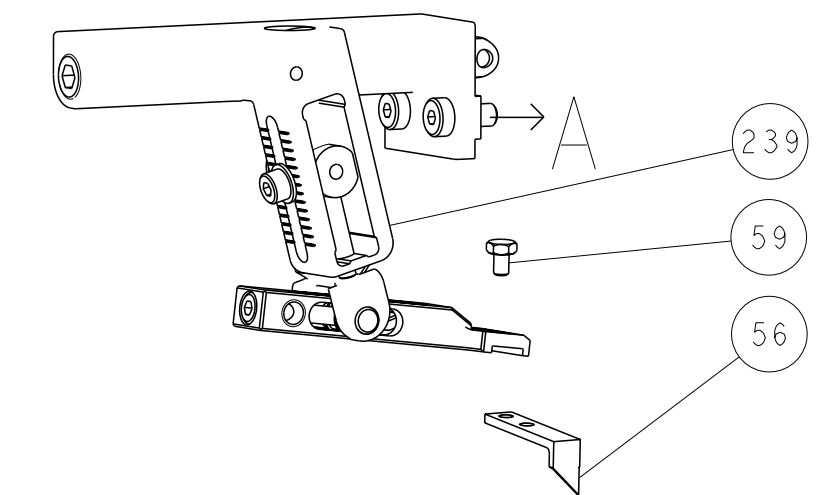
ITEM NO	PART NO	DESCRIPTION	ITEM NO
240	2168400-6	SHCS, LOW HEAD, RoHS, M5 X 16	240
239	2119580-1	MECHANICAL FEED ASSEMBLY	239
238	2063440-1	AIR FEED MODULE	238
213	2119740-2	TAG IDENTIFICATION	213
198	1901094-3	SPACER, FEEDER	198
177	993111-1	PIN, SLOTTED SPRING 3.0 X 20.0	177
176	8-22280-7	SPRING, COMPRESSION	176
175	1752353-2	GUIDE PIN, HOLDDOWN	175
174	1901680-2	GUIDE PIN, HOLDDOWN	174
172	21045-3	RING, RETAIN, EXTERN, 3/16 CRESCENT	172
166	994969-1	MAGNET, RARE EARTH HIGH ENERGY	166
164	994970-2	COUNTER, MAGNETIC	164
163	240638-1	SPRING, FEED FINGER	163
137	3-23627-7	PIN, RETAIN, GRVD, 3/16 X .854	137
136	2119799-1	HOLDER, FEED FINGER, AF	136
135	SEE NOTE 4	MEMORY CHIP, PROGRAMMED	135
133	1633743-1	SERVO FEED LATCH ASM	133
117	2119944-1	FEED FINGER ASSEMBLY, SF	117
96	2168083-1	SCR, SKT HD CAP, RoHS, M3 X 8.0	96
95	690438-1	FRONT STRIP GUIDE	95
82	455888-7	SPACER, CRIMPER	82
77	5-547505-2	SPRING, COMPRESSION	77
74	854769-4	HOLDER, INS	74
71	2119956-1	DOCUMENTATION PACKAGE	71
70	2119791-5	DEPRESSOR, WIRE	70
67	2119740-1	TAG IDENTIFICATION	67
66	2168078-1	SCREW, DRIVE, RH, RoHS	66
63	2119793-1	LIMITER, ADJUSTMENT BOLT	63
62	992763-5	SCR, SET, SOC, CONE POINT, M3 X 4.0	62
61	2-18032-5	SCR, SET, FLT POINT M5 X 20.0	61
60	2079383-4	SCR, BHSC, RoHS (M4 X 8)	60
59	5-18022-5	SCR, HEX HD CAP, M4 X 6.0	59
58	21028-2	PIN, SLOTTED SPRING .062 X .250	58
56	1338685-1	PAWL, FEED	56
54	2168400-1	SHCS, LOW HEAD, RoHS, M4 X 12	54
52	1-5018030-0	NUT, HEX, REG, RoHS, M3.5	52
51	1901681-1	HOLDDOWN, TERMINAL	51
50	1-1752354-9	STANDOFF, HOLD-DOWN	50
49	18023-9	SCR, SKT HD CAP M4 X 6.0	49
48	2119652-1	FEED CAM, PRE FEED	48
47	2119653-1	FEED CAM, POST FEED	47
46	2119656-9	APPLICATOR BASIC ASSEMBLY, SF	46
44	2119370-1	RAM, AMP STYLE, SIDE FEED	44
41	2079383-7	SCR, BHSC, RoHS (M8 X 25)	41
40	2119645-1	DISC, NUMBERED FA WIRE ADJUSTMENT	40
39	2119957-1	APPLICATOR SHIM PACK	39
38	2119644-8	RAM WASHER, PRECISION	38
37	2119085-1	FA HEAD, ATLANTIC STYLE	37
35	2119092-1	BOLT, ADJUSTMENT	35
34	1752356-6	SUPPORT, TERMINAL	34
33	2079383-5	SCR, BHSC, RoHS (M4 X 20)	33
32	2161328-1	HEX HEAD, FLANGED, M5 X 8mm LONG	32
30	1-1320908-2	SPACER, STRIP GUIDE	30
29	2119959-3	ASSEMBLY, STRIP GUIDE	29
28	1-455888-0	SPACER, CRIMPER	28
27	22283-1	SPRING, COMPRESSION	27
26	356835-1	LEVER, DRAG RELEASE	26
25	240792-5	DRAG, TERMINAL	25
24	1320928-2	PLATE, STRIP GUIDE	24
23	980371-4	SCR, SKT HD SHLDR 5.0 DIA X 6.0	23
21	2168083-2	SCR, SKT HD CAP, RoHS, M4 X 8.0	21
20	1-18028-2	WASHER, FLAT, REG M4	20
19	2119533-1	STRIPPER, SIDE FEED	19
13	2119806-1	INSERT, SHEAR	13
12	3-22280-3	SPRING, COMPRESSION	12
11	356885-5	STOP, SHEAR	11
10	2119805-1	SHEAR HOLDER, FRONT	10
9	462006-6	FLOATING SHEAR, FRONT	9
8	8-1333205-1	ANVIL, COMBINATION	8
5	1-2119780-1	DEPRESSOR, SHEAR	5
4	238011-7	BLOCK, CRIMPER SPACER	4
3	1633962-3	CRIMPER, INSULATION F PREMIUM	3
1	4-456406-7	CRIMPER, WIRE PREMIUM	1

APPROVED	DATE	NAME	TE CONNECTIVITY
[Signature]	25AUG2011	L. ZHANG	Harrisburg, PA 17105-3608
[Signature]	25AUG2011	L. ZHANG	
[Signature]	25AUG2011	S. LI	

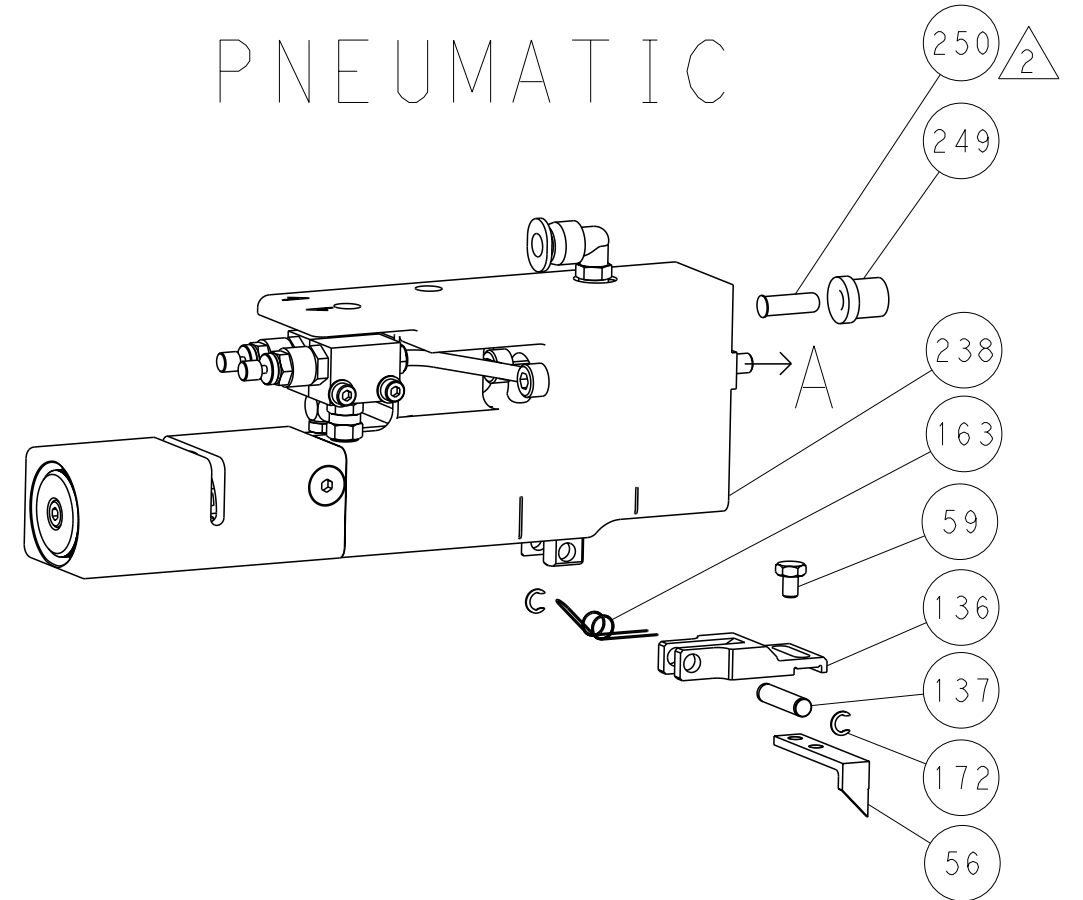
TE Connectivity
 Ocean Side Feed Applicator

LOC	DIST	REV	DATE	BY	APPV
A	66				

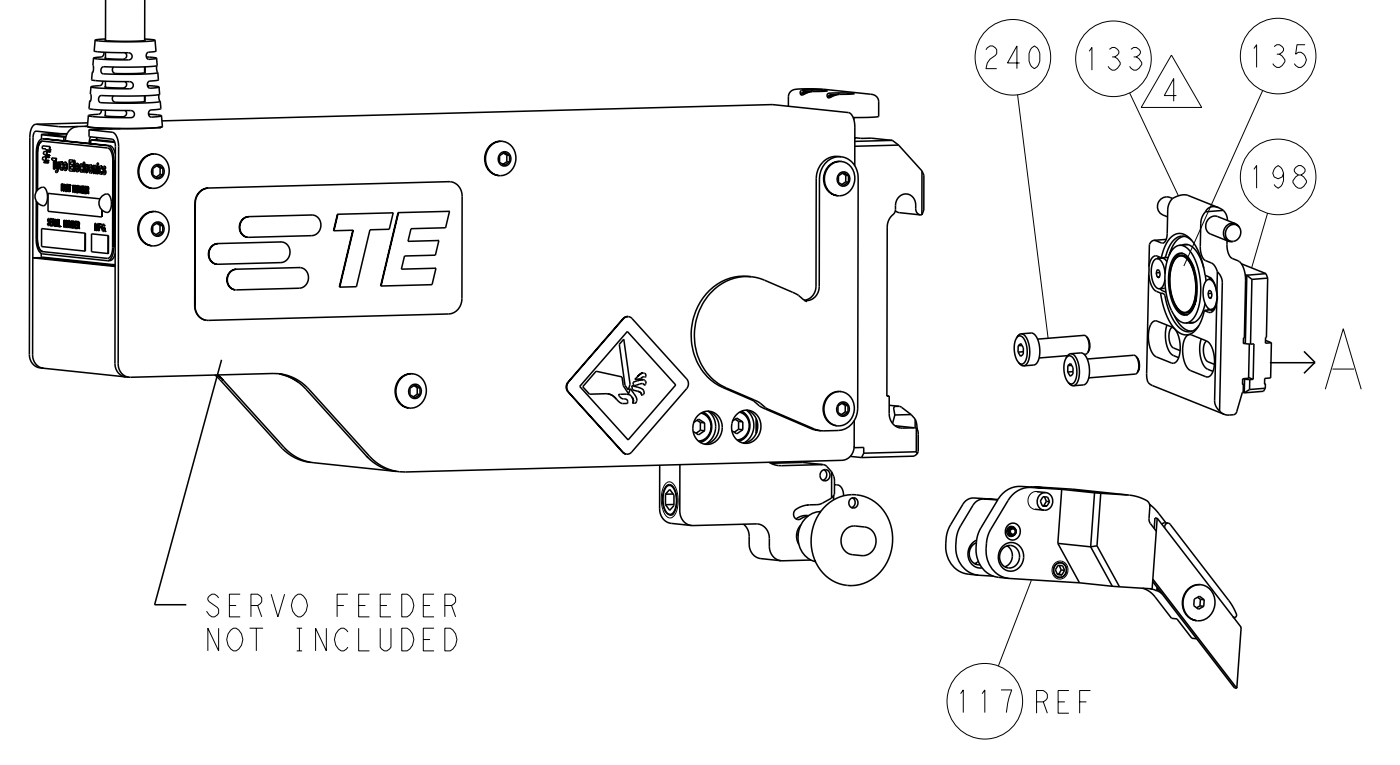
FEED TYPE MECHANICAL



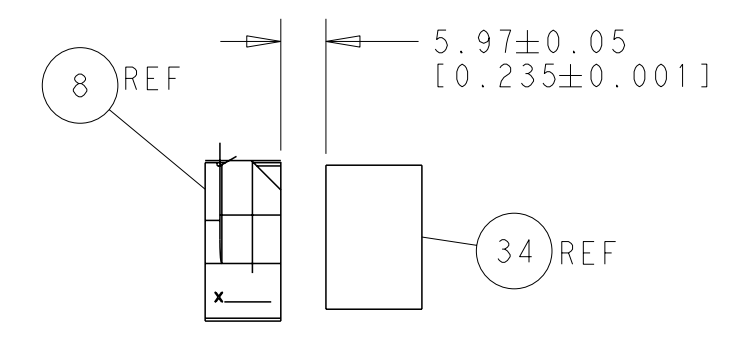
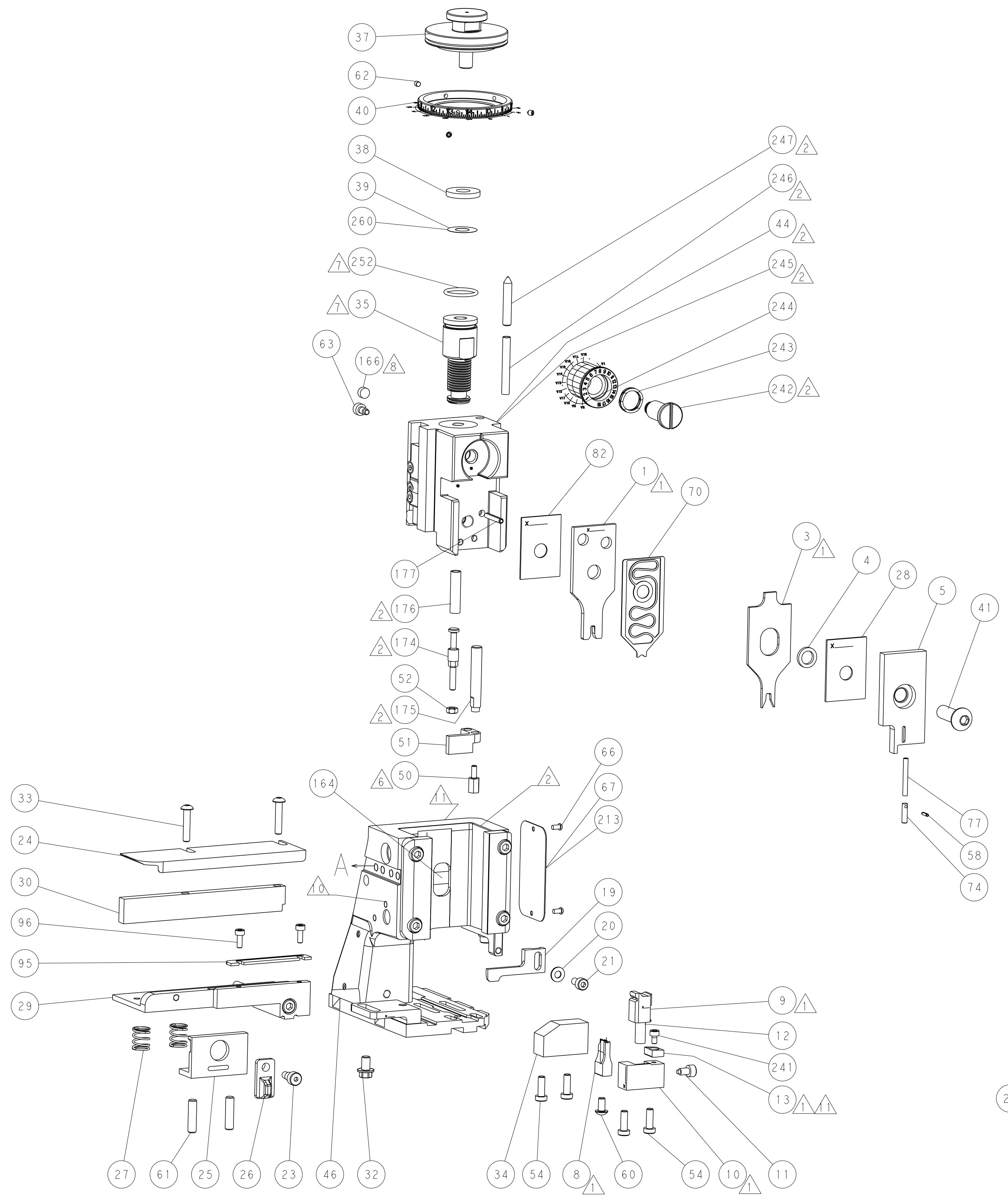
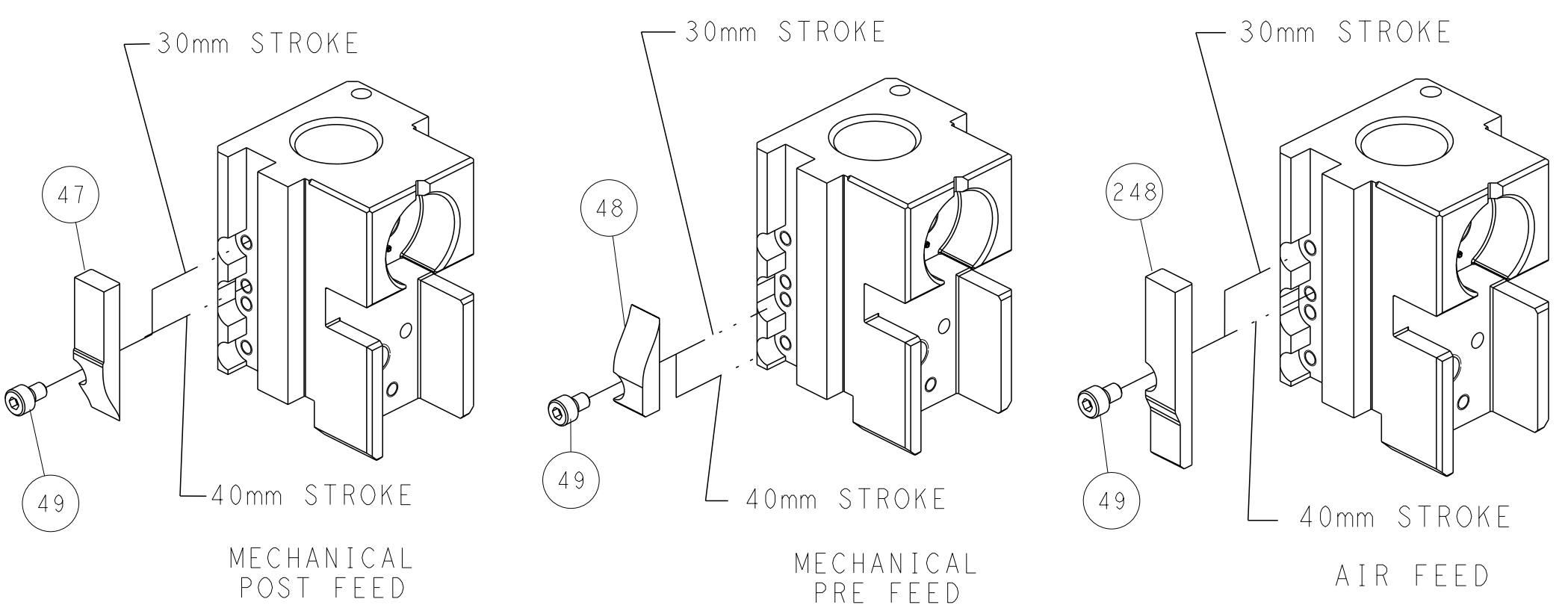
PNEUMATIC



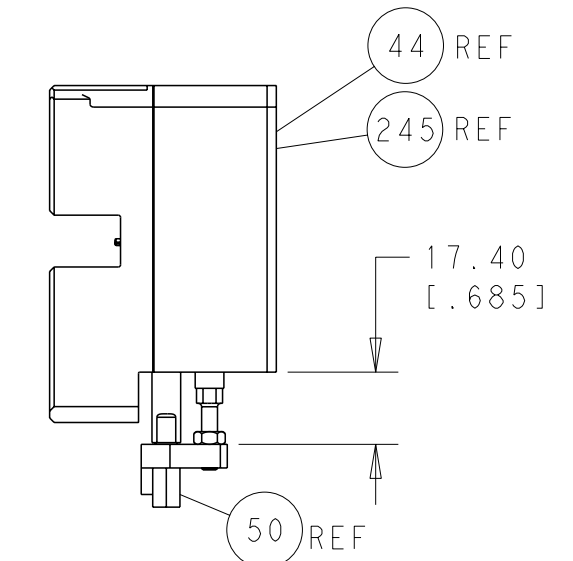
SERVO LATCH PLATE



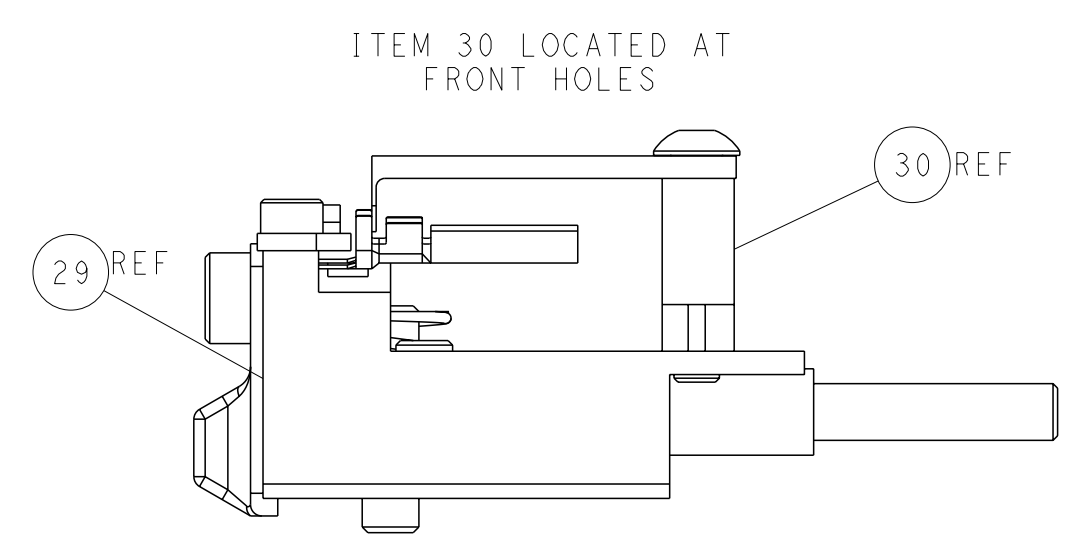
CAM POSITIONS



TERMINAL SUPPORT LOCATION



HOLDDOWN SET-UP



FEED TRACK POSITION GUIDE BY INSULATION BARREL

ATLANTIC VERSION
 Shown on sheets 1 of 4 & 2 of 4
 (Pacific version shown on sheets 3 of 4 & 4 of 4)

DIMENSIONS: mm 		TOLERANCES UNLESS OTHERWISE SPECIFIED: 9 PLC ±.5 1 PLC ±0.13 3 PLC ±0.13 4 PLC ±0.001 ANGLES ±.0001		DWN L. ZHANG 25AUG2011 CHK L. ZHANG 25AUG2011 APVD L. ZHANG 25AUG2011		NAME Ocean Side Feed Applicator	
MATERIAL:		FINISH:		WEIGHT:		SIZE CAGE CODE DRAWING NO. RESTRICTED TO A1 00779 C-2151000	
CUSTOMER ACCESSIBLE PRODUCTION DRAWING				SCALE 1:2 SHEET 2 OF 4 REV A1		SHEETS 3 & 4 ARE NOT REQUIRED FOR ATLANTIC VERSION	

PACIFIC VERSION TERMINATOR INTERFACE ADAPTER	PART NUMBER	REVISION	DESCRIPTION	FEED TYPE	APPLICATOR STYLE CONVERSION CHART						
					CONVERT TO	PART NUMBERS REQUIRED					
						PNEUMATIC FEED	2119950-1	1338685-1	5-18022-5	2119641-2	2119799-1
	2-2151000-1	A	FINE CRIMP HEIGHT ADJUST	MECHANICAL	SERVO LATCH PLATE	2119951-1	-	8-2151000-5	1901094-3	-	2168400-6 (QUANTITY 2)
	2-2151000-2	A	FINE CRIMP HEIGHT ADJUST	PNEUMATIC	SMART APPLICATOR	2161326-1	-	8-2151000-4	-	-	-
	2-2151000-5	A	FINE CRIMP HEIGHT ADJUST	SERVO LATCH PLATE	MECHANICAL FEED	2119949-1	1338685-1	5-18022-5	2119653-2	-	-
	2-2151000-7	A	FINE CRIMP HEIGHT ADJUST	NONE	SERVO LATCH PLATE	2119951-1	-	8-2151000-5	1901094-3	-	2168400-6 (QUANTITY 2)
	7-2151000-7	A	CRIMP TOOLING KIT	-	SMART APPLICATOR	2161326-1	-	8-2151000-4	-	-	-
					MECHANICAL FEED	2119949-1	1338685-1	5-18022-5	2119653-2	-	-
					PNEUMATIC FEED	2119950-1	1338685-1	5-18022-5	2119641-2	2119799-1	2063440-1

APPLICATOR DATA		
CRIMP WIRE	SIZE	TYPE
	2.29 mm [.090]	F
	3.30 mm [.130]	F
APPLICATOR INSTRUCTIONS 408-10389		

TERMINAL DATA: TE TERMINAL		TE CRIMP SPEC	
TERMINAL NAME: UNIVERSAL MNL SOCKET 0.5-2.0 mm2			
WIRE STRIP LENGTH		INSULATION DIAMETER RANGE	
3.99-4.75 mm [.157-.187]		Ø 1.52-3.30 mm [.060-.130]	
TERMINAL APPLICATION SPECIFICATION	(A)114-1010 (B)114-1011	(C)114-1012	-
TERMINALS APPLIED			
TE TERMINAL	TE TERMINAL	TE TERMINAL	TE TERMINAL
(A) 350536-1	(A) 350536-2	(A) 350536-3	(A) 350536-6
(A) 350536-7	(A) 350654-1	(A) 350654-2	(A) 350654-7
(A) 350687-1	(A) 350687-2	(A) 350687-4	(A) 350687-7
(A) 350687-8	(B) 350217-1	(B) 350218-1	(B) 350218-2
(B) 350218-3	(C) 61117-1	(C) 61117-2	(C) 61117-4
(C) 61118-1	(C) 61118-2	(C) 61118-4	(C) 61118-5
WIRE SIZE	CRIMP HEIGHT mm [INCH]	CRIMP HEIGHT REFERENCE SETTING	
14 AWG	1.75 +/- 0.05 [.069 +/- .002]	4.4	
2.00mm2	1.70 +/- 0.05 [.067 +/- .002]	5.0	
1.50mm2	1.57 +/- 0.05 [.062 +/- .002]	6.3	
16 AWG	1.50 +/- 0.05 [.059 +/- .002]	7.0	
1.25mm2	1.45 +/- 0.05 [.057 +/- .002]	7.5	
1.00mm2	1.40 +/- 0.05 [.055 +/- .002]	8.0	
18 AWG	1.32 +/- 0.05 [.052 +/- .002]	9.0	
0.75mm2	1.30 +/- 0.05 [.051 +/- .002]	9.2	
0.50mm2	1.22 +/- 0.05 [.048 +/- .002]	10.0	
20 AWG	1.19 +/- 0.05 [.047 +/- .002]	10.3	

TERMINAL DATA: TE TERMINAL		TE CRIMP SPEC	
TERMINAL NAME: UNIVERSAL MNL SOCKET 0.5-2.0 mm2			
WIRE STRIP LENGTH		INSULATION DIAMETER RANGE	
4.00-4.75 mm [.157-.187]		Ø 2.00-3.30 mm [.079-.130]	
TERMINAL APPLICATION SPECIFICATION	(D)114-18011	-	-
TERMINALS APPLIED			
TE TERMINAL	TE TERMINAL	TE TERMINAL	TE TERMINAL
(D) 926882-1	(D) 926882-2	(D) 926882-3	(D) 926882-4
(D) 926882-6	(D) 926882-7	(D) 926883-1	(D) 926883-3
(D) 926883-4	(D) 926883-5	(D) 926883-6	(D) 926883-7
(D) 926883-8	(D) 926887-1	(D) 926887-2	(D) 926887-3
(D) 926887-4	(D) 926887-5	(D) 926887-6	(D) 926887-7
(D) 926887-0	(D) 1-926887-1	(D) 927965-1	(D) 927965-3
WIRE SIZE	CRIMP HEIGHT mm [INCH]	CRIMP HEIGHT REFERENCE SETTING	
14 AWG	1.73 +/- 0.05 [.068 +/- .002]	4.6	
2.00mm2	1.70 +/- 0.05 [.067 +/- .002]	5.0	
1.50mm2	1.53 +/- 0.05 [.060 +/- .002]	6.5	
16 AWG	1.47 +/- 0.05 [.058 +/- .002]	7.2	
1.25mm2	1.45 +/- 0.05 [.057 +/- .002]	7.5	
1.00mm2	1.37 +/- 0.05 [.054 +/- .002]	8.2	
18 AWG	1.30 +/- 0.05 [.051 +/- .002]	9.2	
0.75mm2	1.30 +/- 0.05 [.051 +/- .002]	9.2	
0.50mm2	1.21 +/- 0.05 [.048 +/- .002]	10.0	
20 AWG	1.21 +/- 0.05 [.048 +/- .002]	10.0	

- RECOMMENDED SPARE PARTS
- GREASE BEARING SURFACES LIGHTLY
- 3. LUBRICATE DAILY PER THE APPLICATOR INSTRUCTION SHEET SUPPLIED WITH THE APPLICATOR.
- APPLICATOR SPECIFIC DATA TO BE ENTERED INTO BLANK MEMORY CHIP AT ASSEMBLY. SEE BELOW FOR PART NUMBER:
 MECHANICAL FEED WITH "SMART APPLICATOR" CONVERSION: 8-2151000-4
 PNEUMATIC FEED WITH "SMART APPLICATOR" CONVERSION: 8-2151000-4
 SERVO FEED WITH "FINE CRIMP HEIGHT ADJUST": 8-2151000-5
 SERVO FEED WITH "NON-CRIMP HEIGHT ADJUST": 8-2151000-6
- 5. ADJUSTMENT OF THE STRIPPER MAY BE REQUIRED WHEN MOVING THE APPLICATOR BETWEEN BENCH AND LEADMAKER APPLICATIONS.
- APPLY PART NUMBER 1-23419-5 LOCTITE TO THREADS OF ITEM 50.
- GREASE THREADS, GROOVE AND O-RING ON ITEMS 139 & 152.
- MAGNET MUST BE ORIENTED CORRECTLY IN ORDER TO PROPERLY ACTUATE THE COUNTER.
- CRIMP HEIGHT REFERENCE SETTING WAS THE SETTING USED WHEN THE APPLICATOR WAS QUALIFIED AT THE FACTORY. ADJUSTMENT MAY BE NECESSARY WHEN RUNNING APPLICATOR IN THE FIELD.
- SPARE FEED CAM STORAGE LOCATION REFER TO INSTRUCTION SHEET FOR ADDITIONAL INFORMATION.
- TO CONVERT THE APPLICATOR TO A NON-CARRIER CUTTING STYLE, REMOVE ITEM 13 AND ATTACH TO THE LOCATION ON BACK SIDE OF THE HOUSING. REFER TO INSTRUCTION SHEET FOR ADDITIONAL INFORMATION.

***WARNING**
 ON INSTALLATION, SET WIRE DISC, ITEM 40 TO LARGEST WIRE SIZE SETTING. USE OF SETTINGS BELOW MINIMUM REQUIRED CRIMP HEIGHT SETTING WILL CAUSE DAMAGE TO CRIMP TOOLING.

ITEM NO	PART NO	DESCRIPTION	ITEM NO
-	2119782-1	FINE ADJUST HEAD ASM, PACIFIC STYLE	251
-	2119640-1	PUSH ROD, AIR FEED	250
-	2079988-1	BUSHING, LCH5-12, MISUMI	249
-	1-22279-3	SPRING, COMPRESSION	246
-	2119082-9	CAM, SNAIL, INSULATION ADJUSTMENT	244
-	2079764-1	WASHER, WAVE SPRING, CREST-TO-CREST	243
-	2119083-1	RETAINER, INSULATION DIAL	242
-	18023-1	SCR, SKT HD CAP M3 X 5.0	241
-	2168400-6	SHCS, LOW HEAD, RoHS, M5 X 16	240
-	2119580-1	MECHANICAL FEED ASSEMBLY	239
-77-27-25-22-21	PART NO	DESCRIPTION	ITEM NO

PACIFIC VERSION
 Shown on sheets 3 of 4 & 4 of 4
 (Atlantic version shown on sheets 1 of 4 & 2 of 4)

SET UP GAUGE	LOC	DIST	REV	DATE	BY	APPD
2119599-1	A	66				

REV	DATE	BY	APPD	DESCRIPTION	DATE	BY	APPD
-	-	-	-	SEE SHEET 1	-	-	-
-	-	-	-	2063440-1	AIR FEED MODULE	-	238
-	-	-	-	2119740-2	TAG IDENTIFICATION	-	213
-	-	-	-	1901094-3	SPACER, FEEDER	-	198
-	-	-	-	993111-1	PIN, SLOTTED SPRING 3.0 X 20.0	-	177
-	-	-	-	8-22280-7	SPRING, COMPRESSION	-	176
-	-	-	-	1752353-2	GUIDE PIN, HOLDDOWN	-	175
-	-	-	-	1901680-2	GUIDE PIN, HOLDDOWN	-	174
-	-	-	-	21045-3	RING, RETAIN, EXTERN, 3/16 CRESCENT	-	172
-	-	-	-	994969-1	MAGNET, RARE EARTH HIGH ENERGY	-	166
-	REF	REF	REF	994970-2	COUNTER, MAGNETIC	-	164
-	-	-	-	240638-1	SPRING, FEED FINGER	-	163
-	-	-	-	8-21084-1	O-RING, .801 ID, .070 DIA. MAT.	-	152
-	-	-	-	2119641-2	FEED CAM, AIR FEED	-	151
-	-	-	-	2119798-2	DETENT PIN	-	145
-	-	-	-	2079383-8	SCR, BHSC, RoHS (M4 X 16)	-	144
-	4	4	4	2168400-5	SHCS, LOW HEAD, RoHS, M4 X 20	-	143
-	-	-	-	2119653-2	FEED CAM, POST FEED	-	142
-	-	-	-	1-2119656-0	APPLICATOR BASIC ASSEMBLY, SF	-	141
-	-	-	-	2119650-1	RAM, ASIAN STYLE, SIDE FEED	-	140
-	-	-	-	2119092-2	BOLT, ADJUSTMENT	-	139
-	-	-	-	3-23627-7	PIN, RETAIN, GRVD, 3/16 X .854	-	137
-	-	-	-	2119799-1	HOLDER, FEED FINGER, AF	-	136
-	REF	REF	REF	SEE NOTE 4	MEMORY CHIP, PROGRAMMED	-	135
-	-	-	-	1633743-1	SERVO FEED LATCH ASM	-	133
-	REF	REF	REF	2119944-1	FEED FINGER ASSEMBLY, SF	-	117
-	2	2	2	2168083-1	SCR, SKT HD CAP, RoHS, M3 X 8.0	-	96
-	-	-	-	690438-1	FRONT STRIP GUIDE	-	95
-	-	-	-	455888-7	SPACER, CRIMPER	-	82
-	-	-	-	5-547505-2	SPRING, COMPRESSION	-	77
-	-	-	-	854769-4	HOLDER, INS	-	74
-	-	-	-	2119956-1	DOCUMENTATION PACKAGE	-	71
-	-	-	-	2119791-5	DEPRESSOR, WIRE	-	70
-	-	-	-	2119740-1	TAG IDENTIFICATION	-	67
-	2	2	2	2168078-1	SCREW, DRIVE, RH, RoHS	-	66
-	-	-	-	2119793-1	LIMITER, ADJUSTMENT BOLT	-	63
-	3	3	3	992763-5	SCR, SET, SOC, CONE POINT, M3 X 4.0	-	62
-	2	2	2	2-18032-5	SCR, SET, FLT POINT M5 X 20.0	-	61
-	-	-	-	5-18022-5	SCR, HEX HD CAP, M4 X 6.0	-	59
-	-	-	-	21028-2	PIN, SLOTTED SPRING .062 X .250	-	58
-	-	-	-	1338685-1	PAWL, FEED	-	56
-	-	-	-	1-5018030-0	NUT, HEX, REG, RoHS, M3.5	-	52
-	-	-	-	1901681-1	HOLDDOWN, TERMINAL	-	51
-	-	-	-	1-1752354-9	STANDOFF, HOLD-DOWN	-	50
-	-	-	-	18023-9	SCR, SKT HD CAP M4 X 6.0	-	49
-	-	-	-	2119652-1	FEED CAM, PRE FEED	-	48
-	-	-	-	2079383-7	SCR, BHSC, RoHS (M8 X 25)	-	41
-	-	-	-	2119645-1	DISC, NUMBERED FA WIRE ADJUSTMENT	-	40
-	-	-	-	2119957-1	APPLICATOR SHIM PACK	-	39
-	-	-	-	2119644-8	RAM WASHER, PRECISION	-	38
-	-	-	-	1752356-6	SUPPORT, TERMINAL	-	34
-	2	2	2	2079383-5	SCR, BHSC, RoHS (M4 X 20)	-	33
-	-	-	-	2161328-1	HEX HEAD, FLANGED, M5 X 8mm LONG	-	32
-	-	-	-	1-1320908-2	SPACER, STRIP GUIDE	-	30
-	-	-	-	2119959-3	ASSEMBLY, STRIP GUIDE	-	29
-	-	-	-	1-455888-0	SPACER, CRIMPER	-	28
-	2	2	2	22283-1	SPRING, COMPRESSION	-	27
-	-	-	-	356835-1	LEVER, DRAG RELEASE	-	26
-	-	-	-	240792-5	DRAG, TERMINAL	-	25
-	-	-	-	1320928-2	PLATE, STRIP GUIDE	-	24
-	-	-	-	980371-4	SCR, SKT HD SHLDR 5.0 DIA X 6.0	-	23
-	-	-	-	2168083-2	SCR, SKT HD CAP, RoHS, M4 X 8.0	-	21
-	-	-	-	1-18028-2	WASHER, FLAT, REG M4	-	20
-	-	-	-	2119533-1	STRIPPER, SIDE FEED	-	19
-	-	-	-	2119806-1	INSERT, SHEAR	-	13
-	-	-	-	3-22280-3	SPRING, COMPRESSION	-	12
-	-	-	-	356885-5	STOP, SHEAR	-	11
-	-	-	-	2119805-1	SHEAR HOLDER, FRONT	-	10
-	-	-	-	462006-6	FLOATING SHEAR, FRONT	-	9
-	1	-	-	8-1333205-1	ANVIL, COMBINATION	-	8
-	-	-	-	1-2119780-1	DEPRESSOR, SHEAR	-	5
-	-	-	-	238011-7	BLOCK, CRIMPER SPACER	-	4
-	1	-	-	1633962-3	CRIMPER, INSULATION F PREMIUM	-	3
-	1	-	-	4-456406-7	CRIMPER, WIRE PREMIUM	-	1
-77-27-25-22-21	PART NO	DESCRIPTION	ITEM NO				

DIMENSIONS:		TOLERANCES UNLESS OTHERWISE SPECIFIED:		DRAWING NO		RESTRICTED TO	
mm	9 PLC ± .5	1 PLC ± 0.5	3 PLC ± 0.13	5 PLC ± 0.013	4 PLC ± 0.001	FINISH	
MATERIAL		FINISH		WEIGHT		SCALE	
						1:2	

