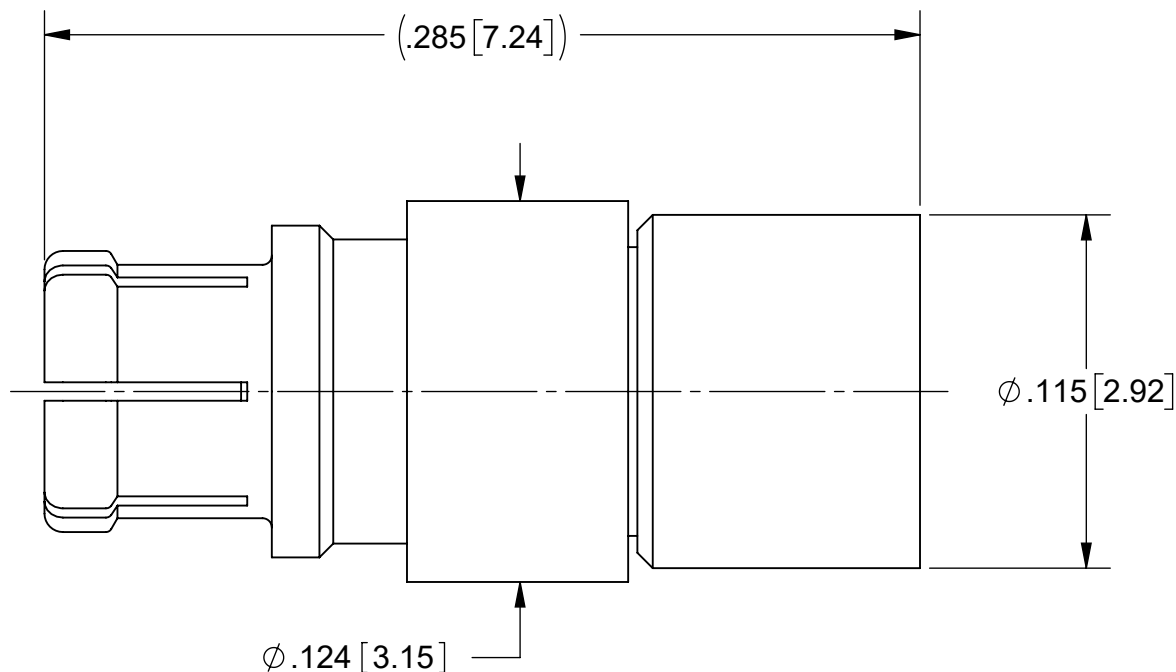
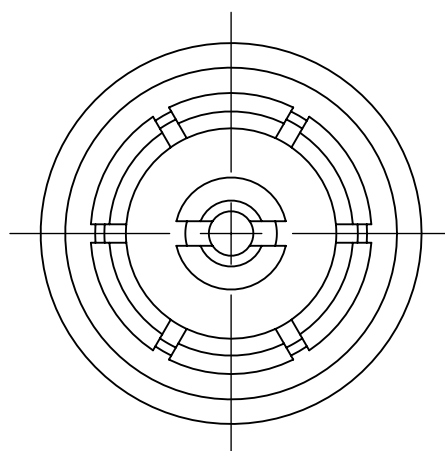


# PRODUCT DATA DRAWING

| REVISION HISTORY |             |       |          |
|------------------|-------------|-------|----------|
| REV              | DESCRIPTION | DATE  | APPROVED |
| -                | NRN 44864   | 05/20 | STW      |
|                  |             |       |          |



**MATERIAL:**

BODY, FERRULE, & CONTACT: BERYLLIUM COPPER


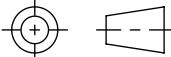
INSULATOR: PTFE

**FINISH:**

BODY, CONTACT & FERRULE: GOLD OVER COPPER

**PERFORMANCE:**

IMPEDANCE: 50 OHMS  
FREQ. RANGE: DC TO 40.0 GHz.

|   |  |  |  |
|---|--|--|--|
| MATERIAL: SEE NOTES   | DIMENSIONS ARE IN INCHES TOLERANCES:<br>FRACTIONAL: ±1/64 ANGULAR: X° ±1°0'<br>X'X' ±15' | UNLESS OTHERWISE SPECIFIED<br>1) ALL DIMENSIONS ARE IN INCHES (MILLIMETERS)<br>2) ALL DIMENSIONS ARE AFTER PLATING.<br>3) BREAK CORNERS & EDGES .005 R. MAX.<br>4) CHAM. 1ST & LAST THREADS.<br>5) SURFACE ROUGHNESS 63-MIL-STD-10.<br>6) DIA: 'S ON COMMON CENTERS TO BE CONCENTRIC WITHIN .005 T.I.R.<br>7) REMOVE ALL BURRS | <br>www.svmicrowave.com<br>TITLE:<br><b>SMPM JACK (NON-MAGNETIC)<br/>FOR .085 CABLE</b> |
| FINISH: SEE NOTES   | DECIMAL: X ±.030<br>.XX ±.010<br>.XXX ±.005  | INTERPRET DIMENSIONS AND TOLERANCES PER ASME Y14.5M - 1994   |  |
| SURFACE AREA: N/A   | THIRD ANGLE PROJECTION   | DRAWN: SJ 05/27/20   | SIZE DWG. NO. <b>B</b> 3221-40132  |
| PROPRIETARY<br>THE INFORMATION CONTAINED IN THIS DRAWING IS THE SOLE PROPERTY OF SV MICROWAVE, INC. ANY REPRODUCTION IN PART OR AS A WHOLE WITHOUT THE WRITTEN PERMISSION OF SV MICROWAVE, INC IS PROHIBITED. |     | CHECKED: STW 05/27/20  | SCALE: 16:1  |
|   |  | APPROVED: STW 05/27/20   | SHEET 1 OF 1   |