

Printed-circuit board connector - IPC 35 HC/ 3-STF-15,00 - 1784800

Please be informed that the data shown in this PDF Document is generated from our Online Catalog. Please find the complete data in the user's documentation. Our General Terms of Use for Downloads are valid (<http://download.phoenixcontact.com>)

Plug component, Nominal current: 125 A, Rated voltage (III/2): 1000 V, Number of positions: 3, Pitch: 15 mm, Connection method: Screw connection, Color: green, Contact surface: Silver




Product Features

- ✓ Low insertion and withdrawal forces for user-friendly device connection
- ✓ Connection capacity of up to 35 mm²
- ✓ Current carrying capacity of up to 125 A
- ✓ Unlimited 600 V UL approval
- ✓ Standard with screw flange for reliable connection even in applications subject to vibration
- ✓ Maximum contact reliability due to integrated double steel spring
- ✓ Inverted high-capacity plugs with pin contact for touch-proof device outputs or free-hanging cable/cable connections



Key commercial data

Packing unit	1 PCE
GTIN	 4 046356 561112
Custom tariff number	85366990
Country of origin	GERMANY

Technical data

Dimensions / positions

Length	58 mm
Height	40 mm
Pitch	15 mm
Dimension a	30 mm
Number of positions	3
Screw thread	M5

Printed-circuit board connector - IPC 35 HC/ 3-STF-15,00 - 1784800

Technical data

Dimensions / positions

Tightening torque, min	2.5 Nm
Tightening torque max	4.5 Nm

Technical data

Range of articles	IPC 35 HC/...STF
Insulating material group	I
Rated surge voltage (III/3)	8 kV
Rated surge voltage (III/2)	8 kV
Rated surge voltage (II/2)	8 kV
Rated voltage (III/2)	1000 V
Rated voltage (II/2)	1000 V
Connection in acc. with standard	EN-VDE
Nominal current I_N	125 A
Nominal voltage U_N	1000 V
Nominal cross section	35 mm ²
Maximum load current	125 A
Insulating material	PA
Inflammability class according to UL 94	V0
Stripping length	20 mm
Nominal voltage, UL/CUL Use Group B	600 V
Nominal current, UL/CUL Use Group B	115 A
Nominal voltage, UL/CUL Use Group C	600 V
Nominal current, UL/CUL Use Group C	115 A

Connection data

Conductor cross section solid min.	0.5 mm ²
Conductor cross section solid max.	35 mm ²
Conductor cross section stranded min.	0.5 mm ²
Conductor cross section stranded max.	35 mm ²
Conductor cross section stranded, with ferrule without plastic sleeve min.	1 mm ²
Conductor cross section stranded, with ferrule without plastic sleeve max.	35 mm ²
Conductor cross section stranded, with ferrule with plastic sleeve min.	1.5 mm ²
Conductor cross section stranded, with ferrule with plastic sleeve max.	35 mm ²
Conductor cross section AWG/kcmil min.	20
Conductor cross section AWG/kcmil max	2
2 conductors with same cross section, solid min.	0.5 mm ²
2 conductors with same cross section, solid max.	6 mm ²
2 conductors with same cross section, stranded min.	0.5 mm ²

Printed-circuit board connector - IPC 35 HC/ 3-STF-15,00 - 1784800

Technical data

Connection data

2 conductors with same cross section, stranded max.	6 mm ²
2 conductors with same cross section, stranded, ferrules without plastic sleeve, min.	0.5 mm ²
2 conductors with same cross section, stranded, ferrules without plastic sleeve, max.	4 mm ²
2 conductors with same cross section, stranded, TWIN ferrules with plastic sleeve, min.	0.5 mm ²
2 conductors with same cross section, stranded, TWIN ferrules with plastic sleeve, max.	6 mm ²
Minimum AWG according to UL/CUL	16
Maximum AWG according to UL/CUL	2

Classifications

ETIM

ETIM 4.0	EC002638
ETIM 5.0	EC002638

UNSPSC

UNSPSC 11	39121409
UNSPSC 12.01	39121409
UNSPSC 13.2	39121409
UNSPSC 6.01	30211810
UNSPSC 7.0901	39121409

eCl@ss

eCl@ss 4.0	272607xx
eCl@ss 4.1	27260701
eCl@ss 5.0	27260701
eCl@ss 5.1	27141190
eCl@ss 6.0	27260704
eCl@ss 7.0	27440402

Approvals

Approvals

Approvals

UL Recognized / GOST / GOST

Printed-circuit board connector - IPC 35 HC/ 3-STF-15,00 - 1784800

Approvals

Ex Approvals

Approvals submitted

Approval details

UL Recognized			
		B	C
mm ² /AWG/kcmil	16-12	16-2	16-2
Nominal current I _N	20 A	115 A	115 A
Nominal voltage U _N	600 V	600 V	600 V

GOST			
------	--	--	--

GOST			
------	--	--	--

Accessories

Accessories

Plug/Adapter

Coding profile - CP-HC - 1686478



Encoding profile, 4 encoding profiles per strip, 40 strips per unit pack, for insertion in encoding grooves

Tools

Printed-circuit board connector - IPC 35 HC/ 3-STF-15,00 - 1784800

Accessories

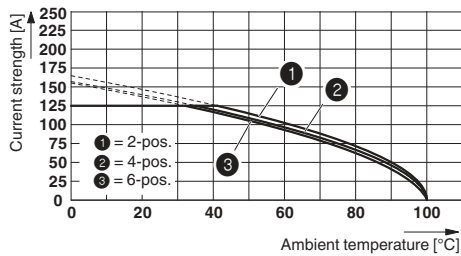
Phillips-screwdriver - SZS 1,0X6,5 VDE - 1205079



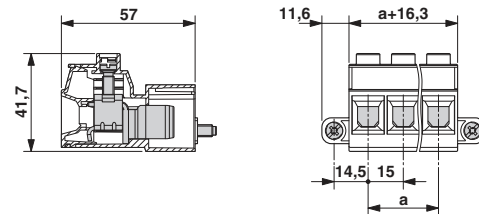
Screwdriver, slot-headed, VDE insulated, size: 1.0 x 6.5 x 150 mm, 2-component grip, with non-slip grip

Drawings

Diagram



Dimensioned drawing



Derating curve for: IPC 35 HC/...-STF-15,0 with IPC 35 HC/...-GF-15,0