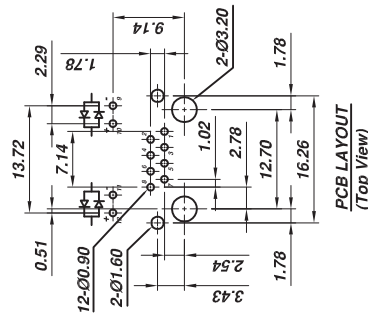
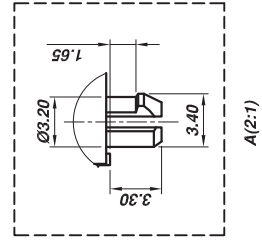


**Recommended Panel Cutout**



**PCB LAYOUT  
(Top View)**



**Material:**

- Housing: Nylon (UL 94V-0)
  - Color: Black
  - Spring Wire: 0.35mm Diameter Phosphor Bronze
  - Gold Plating over Nickel
  - Temp. Range: -40°C/+85°C
  - Soldering Temp: 235°C
  - Durability: 500 Mating cycles Min.
- Electrical:**
- Current rating: 1.5A Max.
  - Voltage rating: 120V AC
  - Insulation Resistance: 500 MΩ Min.
  - Contact Resistance: 20mΩ Max.
  - Dielectric Voltage: 1,000 Vrms for 60 sec. min.

RoHS Compliant

● **Part Number**

PJ068-8P8CX5XX

LED1 (See Chart)	LED2 (See Chart)
6=6U" 7=15U"	
gold plating	8=30U" 9=50U"

**LED Designation:**

Code	Forward	Reverse
G	Green	Red
Y	Yellow	Green
R	Red	Yellow
O	Orange	Red
3	Green	Red

THESE DRAWINGS AND SPECIFICATIONS ARE THE PROPERTY OF ON-SHORE TECHNOLOGY, INC. AND SHALL NOT BE REPRODUCED, COPIED OR USED IN ANY MANNER WITHOUT THE PRIOR WRITTEN CONSENT OF ON-SHORE TECHNOLOGY, INC.



**ON-SHORE TECHNOLOGY, INC.**

TITLE	PJ068, side entry, shielded, SMT, w/LEDs, 8pos, 8 conf, grounding tabs		
PART NO.	PJ068-8P8CX5XX	DWG NO.	PJ068-8P8CX5XX.DWG
APPROVED	Billy 2012.01.01	DESIGNED	Steven 2012.06.01
CHECKED	John 2012.06.01	DRAWN	Tony 2012.06.01
UNIT: mm		TOLERANCE	
SCALE: NONE		X.XX ±0.25	
SHEET: 01/01		X.XXX ±0.13	
REV: A		X.XXXX ±0.05	