

SPECIFICATIONS:

MATERIALS:

SHELL: NICKEL PLATED STEEL
 INSULATOR: PA6T, UL94 V-0
 PROCESS TEMP: 260°C
 CONTACTS: GOLD PLATED BRASS (FLOATING CONTACTS)

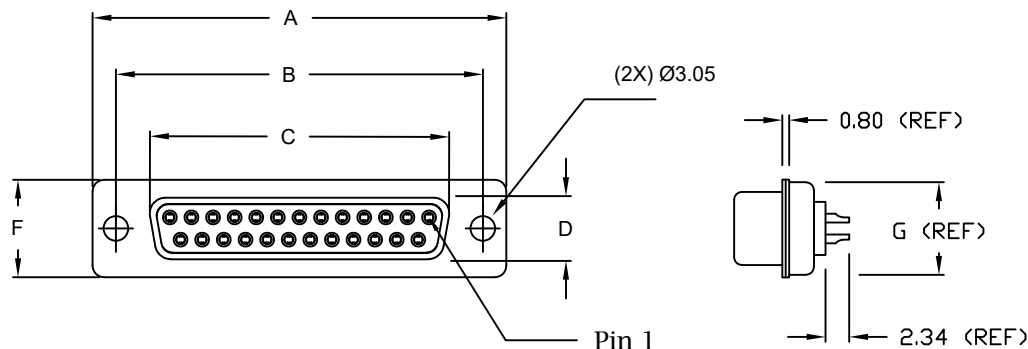
ELECTRICAL:

RATED CURRENT: 5A
 VOLTAGE: 500VAC FOR 1 MINUTE
 INSULATION RESISTANCE: 1000 MOhms MIN.
 CONTACT RESISTANCE: 15 mOhms MAX.

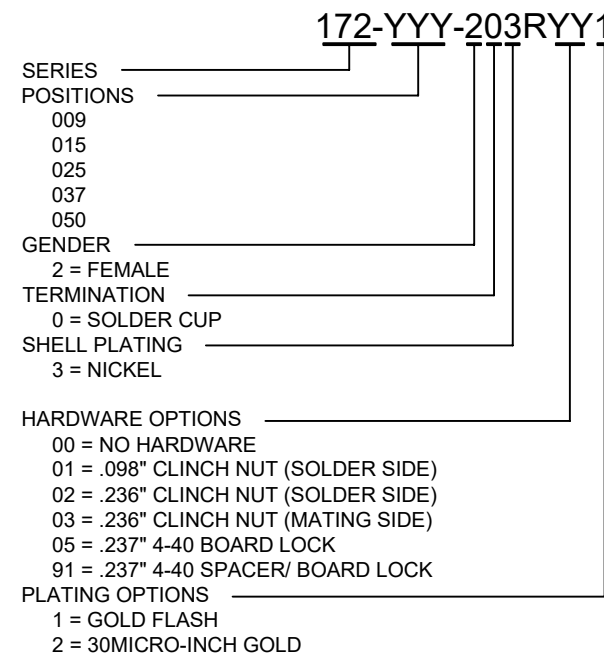
ENVIRONMENT:

OPERATING TEMPERATURE: -50°C TO +100°C

DIMENSIONS(mm)							
SIZE	A ^{±.36}	B ^{±.10}	C ^{±.15}	D ^{±.15}	E ^{±.38}	F ^{±.25}	G (REF)
9	30.80	24.99	16.30	8.00	19.20	12.60	10.75
15	39.15	33.32	24.60	8.00	27.70	12.60	10.75
25	53.04	47.04	38.40	8.00	41.10	12.60	10.75
37	69.32	63.50	54.80	8.00	57.30	12.60	10.75
50	66.93	61.11	52.30	10.80	55.10	15.20	13.30



WILL ACCEPT 26-20 AWG WIRE



RoHS COMPLIANT

UNITS = mm

DO NOT SCALE FROM DRAWING



THESE DRAWINGS AND SPECIFICATIONS ARE THE PROPERTY OF NorComp AND SHALL NOT BE REPRODUCED, COPIED OR USED AS THE BASIS FOR THE MANUFACTURE OR SALE OF APPARATUS WITHOUT WRITTEN PERMISSION.

DRAWN:
P. JENKINS

DATE:
08/24/1998

NorComp

SCALE:
NTS

SHEET 1 OF 2

REV 18

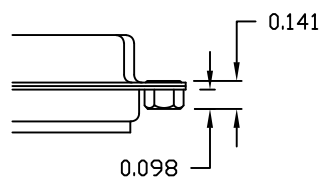
DWG NO.

172-YYY-203RYY1

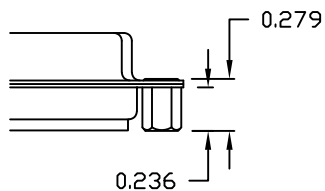
TOLERANCE:
 ALL DIMENSIONS ARE ± 0.010
 UNLESS OTHERWISE
 SPECIFIED

ALL CLINCH-NUTS ARE 4-40 INTERNAL THREADS

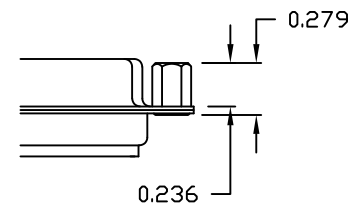
"01" // SOLDER SIDE



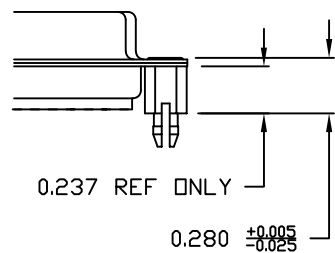
"02" // SOLDER SIDE



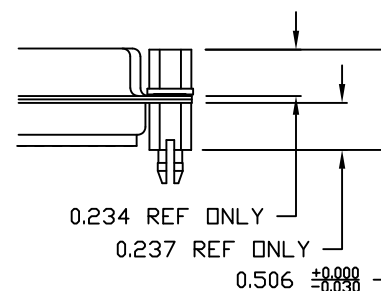
"03" // MATING SIDE



"05" // PCB SIDE



"91" // PCB SIDE



NOTE: 4-40 FEMALE SCREW LOCK IS REMOVABLE

**50 in-oz
 Max Torque**

RoHS COMPLIANT

UNITS = inch

DO NOT SCALE FROM DRAWING



THESE DRAWINGS AND SPECIFICATIONS ARE THE PROPERTY OF NorComp AND SHALL NOT BE REPRODUCED, COPIED OR USED AS THE BASIS FOR THE MANUFACTURE OR SALE OF APPARATUS WITHOUT WRITTEN PERMISSION.

DRAWN:
P. JENKINS
 DATE:
08/24/1998

NorComp

SCALE: NTS	SHEET 2	OF 2	REV 18
DWG NO. 172-YYY-203RYY1			