



Power contactor, AC-3 65 A, 30 kW / 400 V 1 NO + 1 NC, 175-280 V AC/DC with varistor 3-pole, size S2 Spring-type terminals

| | |
|---|---|
| product brand name | SIRIUS |
| product designation | Power contactor |
| product type designation | 3RT2 |
| General technical data | |
| size of contactor | S2 |
| product extension | |
| <ul style="list-style-type: none"> function module for communication auxiliary switch | <p>No</p> <p>Yes</p> |
| power loss [W] for rated value of the current | |
| <ul style="list-style-type: none"> at AC in hot operating state at AC in hot operating state per pole without load current share typical | <p>11.4 W</p> <p>3.8 W</p> <p>2 W</p> |
| insulation voltage | |
| <ul style="list-style-type: none"> of main circuit with degree of pollution 3 rated value of auxiliary circuit with degree of pollution 3 rated value | <p>690 V</p> <p>690 V</p> |
| surge voltage resistance | |
| <ul style="list-style-type: none"> of main circuit rated value of auxiliary circuit rated value | <p>6 kV</p> <p>6 kV</p> |
| maximum permissible voltage for safe isolation between coil and main contacts according to EN 60947-1 | 400 V |
| shock resistance at rectangular impulse | |
| <ul style="list-style-type: none"> at AC at DC | <p>7.7g / 5 ms, 4.5g / 10 ms</p> <p>7.7g / 5 ms, 4.5g / 10 ms</p> |
| shock resistance with sine pulse | |
| <ul style="list-style-type: none"> at AC at DC | <p>12g / 5 ms, 7g / 10 ms</p> <p>12g / 5 ms, 7g / 10 ms</p> |
| mechanical service life (switching cycles) | |
| <ul style="list-style-type: none"> of contactor typical of the contactor with added electronically optimized auxiliary switch block typical of the contactor with added auxiliary switch block typical | <p>10 000 000</p> <p>5 000 000</p> <p>10 000 000</p> |
| reference code according to IEC 81346-2 | Q |
| Substance Prohibitance (Date) | 10/01/2014 |
| Ambient conditions | |
| installation altitude at height above sea level maximum | 2 000 m |
| ambient temperature | |
| <ul style="list-style-type: none"> during operation during storage | <p>-25 ... +60 °C</p> <p>-55 ... +80 °C</p> |

| | |
|--|--------------------|
| relative humidity minimum | 10 % |
| relative humidity at 55 °C according to IEC 60068-2-30 maximum | 95 % |
| Main circuit | |
| number of poles for main current circuit | 3 |
| number of NO contacts for main contacts | 3 |
| operating voltage | |
| • at AC-3 rated value maximum | 690 V |
| • at AC-3e rated value maximum | 690 V |
| operational current | |
| • at AC-1 at 400 V at ambient temperature 40 °C rated value | 80 A |
| • at AC-1 | |
| — up to 690 V at ambient temperature 40 °C rated value | 80 A |
| — up to 690 V at ambient temperature 60 °C rated value | 70 A |
| • at AC-3 | |
| — at 400 V rated value | 65 A |
| — at 500 V rated value | 65 A |
| — at 690 V rated value | 47 A |
| • at AC-3e | |
| — at 400 V rated value | 65 A |
| — at 500 V rated value | 65 A |
| — at 690 V rated value | 47 A |
| • at AC-4 at 400 V rated value | 55 A |
| • at AC-5a up to 690 V rated value | 70.4 A |
| • at AC-5b up to 400 V rated value | 53.9 A |
| • at AC-6a | |
| — up to 230 V for current peak value n=20 rated value | 56.9 A |
| — up to 400 V for current peak value n=20 rated value | 56.9 A |
| — up to 500 V for current peak value n=20 rated value | 56.9 A |
| — up to 690 V for current peak value n=20 rated value | 47 A |
| • at AC-6a | |
| — up to 230 V for current peak value n=30 rated value | 38 A |
| — up to 400 V for current peak value n=30 rated value | 38 A |
| — up to 500 V for current peak value n=30 rated value | 38 A |
| — up to 690 V for current peak value n=30 rated value | 38 A |
| minimum cross-section in main circuit at maximum AC-1 rated value | 25 mm ² |
| operational current for approx. 200000 operating cycles at AC-4 | |
| • at 400 V rated value | 28 A |
| • at 690 V rated value | 22 A |
| operational current | |
| • at 1 current path at DC-1 | |
| — at 24 V rated value | 55 A |
| — at 110 V rated value | 4.5 A |
| — at 220 V rated value | 1 A |
| — at 440 V rated value | 0.4 A |
| — at 600 V rated value | 0.25 A |
| • with 2 current paths in series at DC-1 | |
| — at 24 V rated value | 55 A |
| — at 110 V rated value | 45 A |
| — at 220 V rated value | 5 A |

| | |
|---|---|
| — at 440 V rated value | 1 A |
| — at 600 V rated value | 0.8 A |
| ● with 3 current paths in series at DC-1 | |
| — at 24 V rated value | 55 A |
| — at 110 V rated value | 55 A |
| — at 220 V rated value | 45 A |
| — at 440 V rated value | 2.9 A |
| — at 600 V rated value | 1.4 A |
| ● at 1 current path at DC-3 at DC-5 | |
| — at 24 V rated value | 35 A |
| — at 110 V rated value | 2.5 A |
| — at 220 V rated value | 1 A |
| — at 440 V rated value | 0.1 A |
| — at 600 V rated value | 0.06 A |
| ● with 2 current paths in series at DC-3 at DC-5 | |
| — at 24 V rated value | 55 A |
| — at 110 V rated value | 25 A |
| — at 220 V rated value | 5 A |
| — at 440 V rated value | 0.27 A |
| — at 600 V rated value | 0.16 A |
| ● with 3 current paths in series at DC-3 at DC-5 | |
| — at 24 V rated value | 55 A |
| — at 110 V rated value | 55 A |
| — at 220 V rated value | 25 A |
| — at 440 V rated value | 0.6 A |
| — at 600 V rated value | 0.35 A |
| operating power | |
| ● at AC-2 at 400 V rated value | 30 kW |
| ● at AC-3 | |
| — at 230 V rated value | 18.5 kW |
| — at 400 V rated value | 30 kW |
| — at 500 V rated value | 37 kW |
| — at 690 V rated value | 37 kW |
| ● at AC-3e | |
| — at 230 V rated value | 18.5 kW |
| — at 400 V rated value | 30 kW |
| — at 500 V rated value | 37 kW |
| — at 690 V rated value | 37 kW |
| operating power for approx. 200000 operating cycles at AC-4 | |
| ● at 400 V rated value | 14.7 kW |
| ● at 690 V rated value | 20 kW |
| operating apparent power at AC-6a | |
| ● up to 230 V for current peak value n=20 rated value | 22.6 kVA |
| ● up to 400 V for current peak value n=20 rated value | 39.4 kVA |
| ● up to 500 V for current peak value n=20 rated value | 49.2 kVA |
| ● up to 690 V for current peak value n=20 rated value | 56.1 kVA |
| operating apparent power at AC-6a | |
| ● up to 230 V for current peak value n=30 rated value | 15.1 kVA |
| ● up to 400 V for current peak value n=30 rated value | 26.2 kVA |
| ● up to 500 V for current peak value n=30 rated value | 32.8 kVA |
| ● up to 690 V for current peak value n=30 rated value | 45.3 kVA |
| short-time withstand current in cold operating state up to 40 °C | |
| ● limited to 1 s switching at zero current maximum | 1 055 A; Use minimum cross-section acc. to AC-1 rated value |
| ● limited to 5 s switching at zero current maximum | 730 A; Use minimum cross-section acc. to AC-1 rated value |
| ● limited to 10 s switching at zero current maximum | 520 A; Use minimum cross-section acc. to AC-1 rated value |
| ● limited to 30 s switching at zero current maximum | 336 A; Use minimum cross-section acc. to AC-1 rated value |
| ● limited to 60 s switching at zero current maximum | 272 A; Use minimum cross-section acc. to AC-1 rated value |
| no-load switching frequency | |
| ● at AC | 1 500 1/h |

| | |
|---|------------------|
| <ul style="list-style-type: none"> • at DC | 1 500 1/h |
| operating frequency | |
| <ul style="list-style-type: none"> • at AC-1 maximum | 800 1/h |
| <ul style="list-style-type: none"> • at AC-2 maximum | 400 1/h |
| <ul style="list-style-type: none"> • at AC-3 maximum | 700 1/h |
| <ul style="list-style-type: none"> • at AC-3e maximum | 700 1/h |
| <ul style="list-style-type: none"> • at AC-4 maximum | 200 1/h |
| Control circuit/ Control | |
| type of voltage of the control supply voltage | AC/DC |
| control supply voltage at AC | |
| <ul style="list-style-type: none"> • at 50 Hz rated value | 175 ... 280 V |
| <ul style="list-style-type: none"> • at 60 Hz rated value | 175 ... 280 V |
| control supply voltage at DC | |
| <ul style="list-style-type: none"> • rated value | 175 ... 280 V |
| operating range factor control supply voltage rated value of magnet coil at DC | |
| <ul style="list-style-type: none"> • initial value | 0.8 |
| <ul style="list-style-type: none"> • full-scale value | 1.1 |
| operating range factor control supply voltage rated value of magnet coil at AC | |
| <ul style="list-style-type: none"> • at 50 Hz | 0.8 ... 1.1 |
| <ul style="list-style-type: none"> • at 60 Hz | 0.8 ... 1.1 |
| design of the surge suppressor | with varistor |
| inrush current peak | 5 A |
| duration of inrush current peak | 30 µs |
| locked-rotor current mean value | 0.2 A |
| locked-rotor current peak | 0.42 A |
| duration of locked-rotor current | 230 ms |
| holding current mean value | 6 mA |
| apparent pick-up power of magnet coil at AC | |
| <ul style="list-style-type: none"> • at 50 Hz | 40 VA |
| <ul style="list-style-type: none"> • at 60 Hz | 40 VA |
| apparent holding power of magnet coil at AC | |
| <ul style="list-style-type: none"> • at 50 Hz | 2 VA |
| <ul style="list-style-type: none"> • at 60 Hz | 2 VA |
| closing power of magnet coil at DC | 23 W |
| holding power of magnet coil at DC | 1 W |
| closing delay | |
| <ul style="list-style-type: none"> • at AC | 35 ... 110 ms |
| <ul style="list-style-type: none"> • at DC | 35 ... 110 ms |
| opening delay | |
| <ul style="list-style-type: none"> • at AC | 30 ... 55 ms |
| <ul style="list-style-type: none"> • at DC | 30 ... 55 ms |
| arcing time | 10 ... 20 ms |
| control version of the switch operating mechanism | Standard A1 - A2 |
| Auxiliary circuit | |
| number of NC contacts for auxiliary contacts instantaneous contact | 1 |
| number of NO contacts for auxiliary contacts instantaneous contact | 1 |
| operational current at AC-12 maximum | 10 A |
| operational current at AC-15 | |
| <ul style="list-style-type: none"> • at 230 V rated value | 10 A |
| <ul style="list-style-type: none"> • at 400 V rated value | 3 A |
| <ul style="list-style-type: none"> • at 500 V rated value | 2 A |
| <ul style="list-style-type: none"> • at 690 V rated value | 1 A |
| operational current at DC-12 | |
| <ul style="list-style-type: none"> • at 24 V rated value | 10 A |
| <ul style="list-style-type: none"> • at 48 V rated value | 6 A |
| <ul style="list-style-type: none"> • at 60 V rated value | 6 A |
| <ul style="list-style-type: none"> • at 110 V rated value | 3 A |

| | |
|---|--|
| <ul style="list-style-type: none"> • at 125 V rated value • at 220 V rated value • at 600 V rated value | <p>2 A</p> <p>1 A</p> <p>0.15 A</p> |
| operational current at DC-13 <ul style="list-style-type: none"> • at 24 V rated value • at 48 V rated value • at 60 V rated value • at 110 V rated value • at 125 V rated value • at 220 V rated value • at 600 V rated value | <p>10 A</p> <p>2 A</p> <p>2 A</p> <p>1 A</p> <p>0.9 A</p> <p>0.3 A</p> <p>0.1 A</p> |
| contact reliability of auxiliary contacts | <p>1 faulty switching per 100 million (17 V, 1 mA)</p> |
| UL/CSA ratings | |
| full-load current (FLA) for 3-phase AC motor <ul style="list-style-type: none"> • at 480 V rated value • at 600 V rated value | <p>65 A</p> <p>52 A</p> |
| yielded mechanical performance [hp] <ul style="list-style-type: none"> • for single-phase AC motor <ul style="list-style-type: none"> — at 110/120 V rated value — at 230 V rated value • for 3-phase AC motor <ul style="list-style-type: none"> — at 200/208 V rated value — at 220/230 V rated value — at 460/480 V rated value — at 575/600 V rated value | <p>5 hp</p> <p>10 hp</p> <p>20 hp</p> <p>20 hp</p> <p>50 hp</p> <p>50 hp</p> |
| contact rating of auxiliary contacts according to UL | <p>A600 / P600</p> |
| Short-circuit protection | |
| design of the fuse link <ul style="list-style-type: none"> • for short-circuit protection of the main circuit <ul style="list-style-type: none"> — with type of coordination 1 required — with type of assignment 2 required • for short-circuit protection of the auxiliary switch required | <p>gG: 250 A (690 V, 100 kA), aM: 160 A (690 V, 100 kA), BS88: 200 A (415 V, 80 kA)</p> <p>gG: 125A (690V,100kA), aM: 63A (690V,100kA), BS88: 100A (415V,80kA)</p> <p>gG: 10 A (500 V, 1 kA)</p> |
| Installation/ mounting/ dimensions | |
| mounting position | <p>+/-180° rotation possible on vertical mounting surface; can be tilted forward and backward by +/- 22.5° on vertical mounting surface</p> |
| fastening method <ul style="list-style-type: none"> • side-by-side mounting | <p>screw and snap-on mounting onto 35 mm standard mounting rail according to DIN EN 60715</p> <p>Yes</p> |
| height | <p>114 mm</p> |
| width | <p>55 mm</p> |
| depth | <p>130 mm</p> |
| required spacing <ul style="list-style-type: none"> • with side-by-side mounting <ul style="list-style-type: none"> — forwards — upwards — downwards — at the side • for grounded parts <ul style="list-style-type: none"> — forwards — upwards — at the side — downwards • for live parts <ul style="list-style-type: none"> — forwards — upwards — downwards — at the side | <p>10 mm</p> <p>10 mm</p> <p>10 mm</p> <p>0 mm</p> <p>10 mm</p> <p>10 mm</p> <p>6 mm</p> <p>10 mm</p> <p>10 mm</p> <p>10 mm</p> <p>10 mm</p> <p>6 mm</p> |
| Connections/ Terminals | |

| | |
|--|--|
| type of electrical connection <ul style="list-style-type: none"> • for main current circuit • for auxiliary and control circuit • at contactor for auxiliary contacts • of magnet coil | screw-type terminals spring-loaded terminals Spring-type terminals Spring-type terminals |
| type of connectable conductor cross-sections <ul style="list-style-type: none"> • for main contacts <ul style="list-style-type: none"> — solid or stranded — finely stranded with core end processing • at AWG cables for main contacts | 2x (1 ... 35 mm ²), 1x (1 ... 50 mm ²) 2x (1 ... 25 mm ²), 1x (1 ... 35 mm ²) 2x (18 ... 2), 1x (18 ... 1) |
| connectable conductor cross-section for main contacts <ul style="list-style-type: none"> • finely stranded with core end processing | 1 ... 35 mm ² |
| connectable conductor cross-section for auxiliary contacts <ul style="list-style-type: none"> • solid or stranded • finely stranded with core end processing • finely stranded without core end processing | 0.5 ... 2.5 mm ² 0.5 ... 1.5 mm ² 0.5 ... 2.5 mm ² |
| type of connectable conductor cross-sections <ul style="list-style-type: none"> • for auxiliary contacts <ul style="list-style-type: none"> — solid or stranded — finely stranded with core end processing — finely stranded without core end processing • at AWG cables for auxiliary contacts | 2x (0.5 ... 2.5 mm ²) 2x (0.5 ... 1.5 mm ²) 2x (0.5 ... 2.5 mm ²) 2x (20 ... 14) |
| AWG number as coded connectable conductor cross section <ul style="list-style-type: none"> • for main contacts • for auxiliary contacts | 18 ... 1 20 ... 14 |

Safety related data

| | |
|---|--|
| product function <ul style="list-style-type: none"> • mirror contact according to IEC 60947-4-1 • positively driven operation according to IEC 60947-5-1 | Yes No |
| B10 value with high demand rate according to SN 31920 | 1 000 000 |
| proportion of dangerous failures <ul style="list-style-type: none"> • with low demand rate according to SN 31920 • with high demand rate according to SN 31920 | 40 % 73 % |
| failure rate [FIT] with low demand rate according to SN 31920 | 100 FIT |
| T1 value for proof test interval or service life according to IEC 61508 | 20 y |
| protection class IP on the front according to IEC 60529 | IP20 |
| touch protection on the front according to IEC 60529 | finger-safe, for vertical contact from the front |
| suitability for use <ul style="list-style-type: none"> • safety-related switching OFF | Yes |

Certificates/ approvals

General Product Approval



[Confirmation](#)



[Miscellaneous](#)

[KC](#)

| | | | | |
|--------------------------|-----|---------------------------------------|---------------------------|-------------------|
| General Product Approval | EMC | Functional Safety/Safety of Machinery | Declaration of Conformity | Test Certificates |
|--------------------------|-----|---------------------------------------|---------------------------|-------------------|



[Type Examination Certificate](#)



[Type Test Certificates/Test Report](#)

Test Certificates

Marine / Shipping

[Special Test Certificate](#)



Marine / Shipping

other

Railway

Dangerous Good



[Confirmation](#)

[Confirmation](#)

[Vibration and Shock](#)

[Transport Information](#)

Further information

Information- and Downloadcenter (Catalogs, Brochures,...)

<https://www.siemens.com/ic10>

Industry Mall (Online ordering system)

<https://mall.industry.siemens.com/mall/en/en/Catalog/product?mlfb=3RT2037-3NP30>

Cax online generator

<http://support.automation.siemens.com/WW/CAXorder/default.aspx?lang=en&mlfb=3RT2037-3NP30>

Service&Support (Manuals, Certificates, Characteristics, FAQs,...)

<https://support.industry.siemens.com/cs/ww/en/ps/3RT2037-3NP30>

Image database (product images, 2D dimension drawings, 3D models, device circuit diagrams, EPLAN macros, ...)

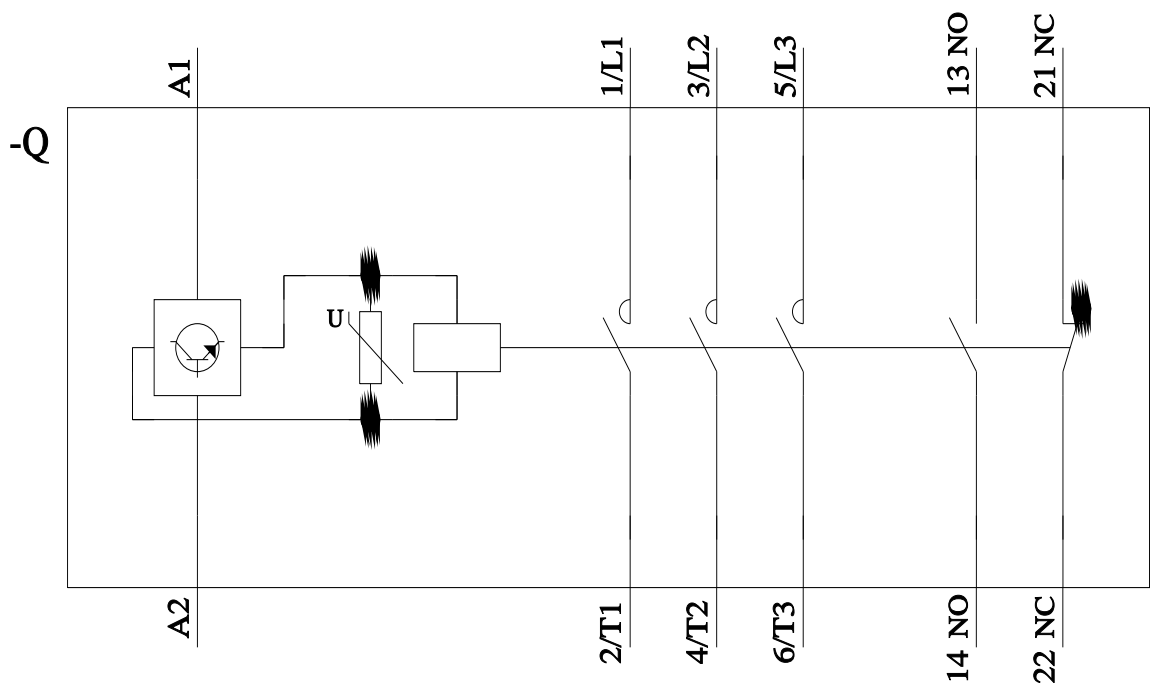
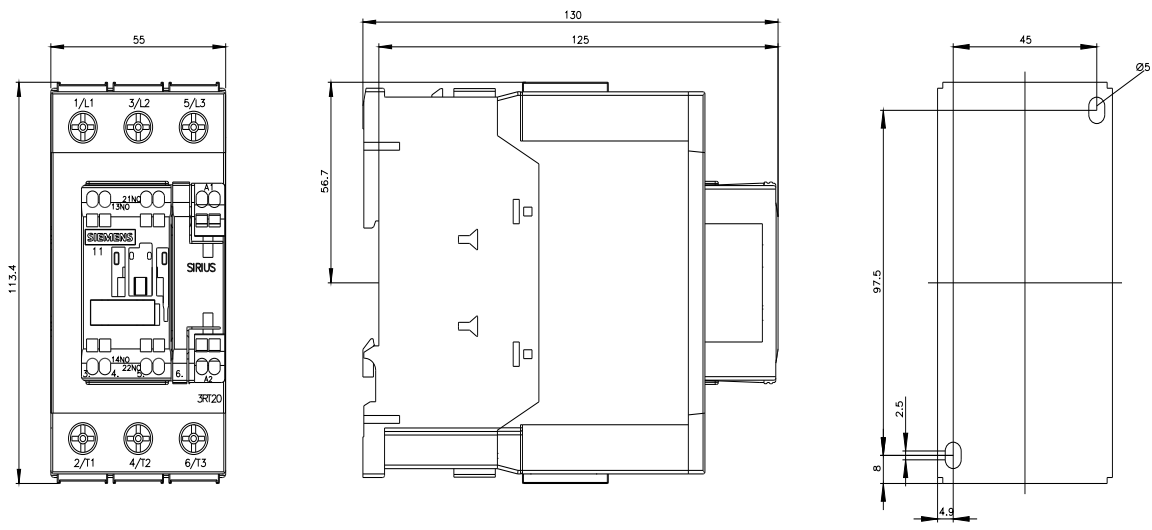
http://www.automation.siemens.com/bilddb/cax_de.aspx?mlfb=3RT2037-3NP30&lang=en

Characteristic: Tripping characteristics, I_t, Let-through current

<https://support.industry.siemens.com/cs/ww/en/ps/3RT2037-3NP30/char>

Further characteristics (e.g. electrical endurance, switching frequency)

<http://www.automation.siemens.com/bilddb/index.aspx?view=Search&mlfb=3RT2037-3NP30&objecttype=14&gridview=view1>



last modified:

2/15/2022

