

18 Watt DoE/CEC Level VI Universal Input, Wall-mount Adapters With Interchangeable AC plug

INPUT SPECIFICATIONS

All specifications are typical at nominal input, full load.

INPUT SPECIFICATIONS

Input Voltage	AC 100 – 240VAC
Input Frequency	50 – 60Hz
Input Current	0.48A Max
Protection	Internal Primary Current Fuse Inrush Limiting

OUTPUT SPECIFICATIONS

Output Voltage	See Chart
Efficiency	DoE/CEC Level VI, Energy Star, ErP Stage 2, NRCAN, GEMS Level VI
Protection	Short Circuit Protection Over Current Protection Over Voltage Protection
Ripple	1 - 2 % Vp-p (max)
Hold-Up Time	10 mS (min)
Transient Response	0.5mS for 50% Load Change(typ)
Load Regulation	± 5% (typ)
Leakage Current	0.25mA @ 2 pin

GENERAL SPECIFICATIONS

MTBF(Calculated)	300,000 Calculated hours at 25°C by Telcordia SR-332
Dielectric Withstanding Voltage	3,000 VAC Primary – Secondary
EMI Conduction & Radiation	Compliance to EN55022 Class B
Harmonic Current	Compliance to EN61000-3-2,3
EMS Immunity	Compliance to EN61000-4- 2,3,4,5,6,8,11
Safety Approvals	UL/cUL/CE/CB/GS/PSE/FCC/RCM



FEATURES

- DoE/CEC LEVEL VI
- UNIVERSAL INPUT (AC100-240V)
- OVER VOLTAGE PROTECTION
- OVER CURRENT PROTECTION
- SHORT CIRCUIT PROTECTION
- ROHS COMPLIANT

ENVIRONMENTAL SPECIFICATIONS

Operating Temperature	0°C~+40°C
Storage Temperature	-20°C ~ +80°C
Cooling.	Convection
Operating Humidity	20 – 80% Rh
Storage Humidity	10 – 90% Rh

MECHANICAL SPECIFICATIONS

Case Dimension	L75 x W36 x H66(mm)
Available Input Connectors	USA, EU, UK, AUS, CHN, KOR
DC Cord	18AWG (Optional 20 & 22 AWG)
Output Connector	5.5 x 2.1 x 9.5 mm C+

Model Number	Output Voltage	Output Current	Max Output Power
KTPS18-05030MP-VI	5.0V	3.0A	15.00W
KTPS18-06025MP-VI	5.9V	2.5A	14.75W
KTPS18-06030MP-VI	5.9V	3.0A	17.70W
KTPS18-07025MP-VI	7.0V	2.5A	17.50W
KTPS18-07525MP-VI	7.5V	2.5A	18.75W
KTPS18-09022MP-VI	9.0V	2.2A	19.80W
KTPS18-10019MP-VI	10.0V	1.9A	19.00W
KTPS18-11016MP-VI	11.0V	1.6A	17.60W
KTPS18-12016MP-VI	12.0V	1.6A	19.20W
KTPS18-15013MP-VI	15.0V	1.3A	19.50W
KTPS18-16012MP-VI	16.0V	1.2A	19.20W
KTPS18-18011MP-VI	18.0V	1.1A	19.80W
KTPS18-24008MP-VI	24.0V	0.8A	19.20W

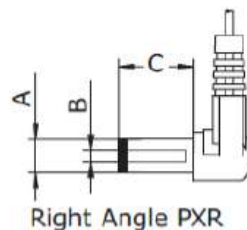
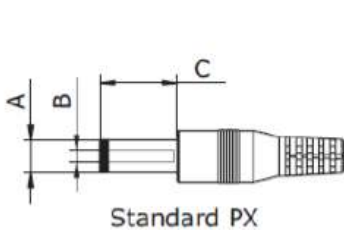
Part Number Key:

KTPS18-xxx yy MP-VI-z-p

xxx = output voltage 12=12.0V 135 = 13.5V example
yy = output current 55 = 5.5 amp example
z = AC input plug C = IEC 320 C14, D=IEC 320 C6
p = output connector P1/(R)* = 2.1/5.5/9.5mm, P2/(R)* = 2.5/5.5/9.5...
 * **R** = Right Angle Connectors

Note: Center Positive (+) standard

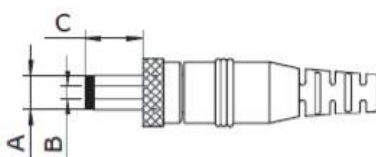
Standard DC Plug



	A	B	C	Unit
P1 / P1R	5.5	2.1	9.5	mm
P2 / P2R	5.5	2.5	9.5	mm
P3 / P3R	3.5	1.35	9.5	mm
P4 / P4R	3.8	1.35	9.5	mm
P5 / P5R	3.8	1.05	9.5	mm

P100 = User Defined

Locking DC Plug



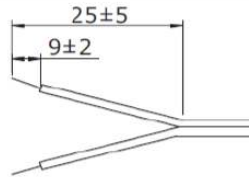
	A	B	C	Unit
P6	5.5	2.1	9.5	mm
P7	5.5	2.5	9.5	mm



KTPS18 Series

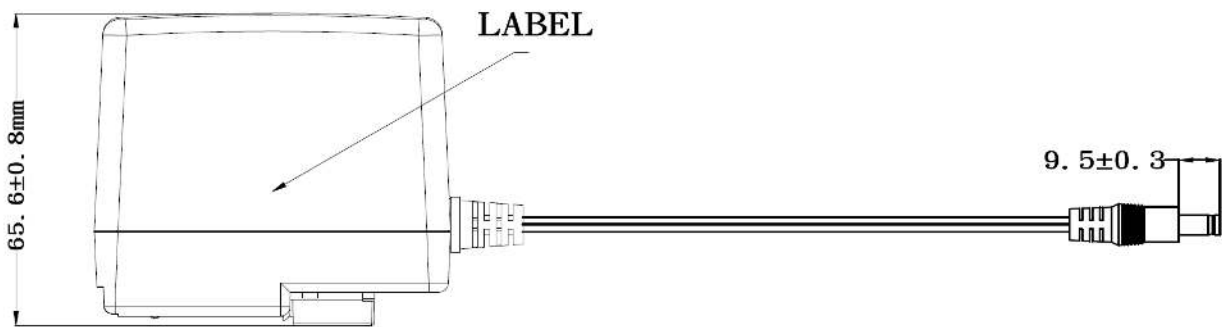
DoE/CEC Level VI

Stripped and Tinned

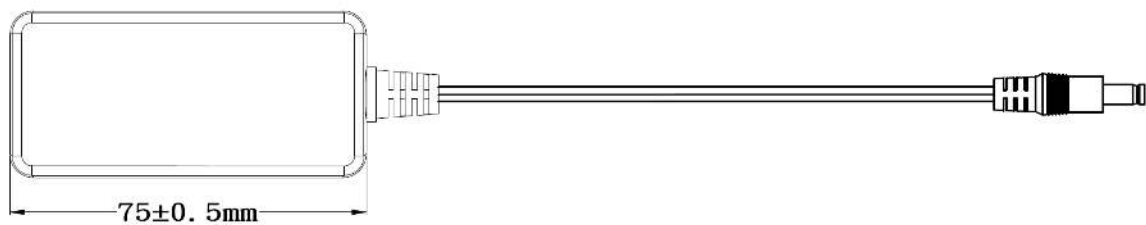


ST = Stripped and Tinned

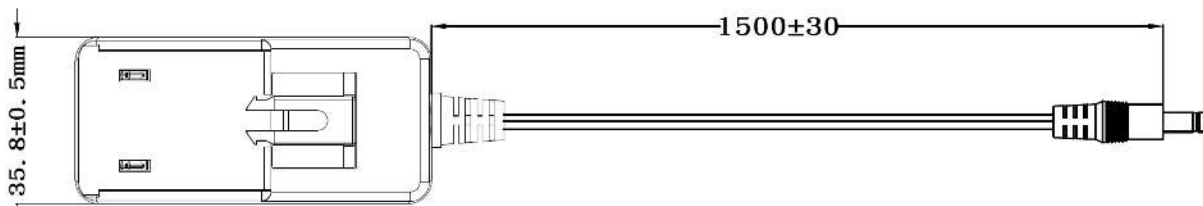
Mechanical Drawing:



SIDE VIEW



TOP VIEW



BOTTOM VIEW



KTPS18 Series

DoE/CEC Level VI

Available AC Plugs:

<input type="checkbox"/> USA	<input type="checkbox"/> Europe	<input type="checkbox"/> U.K.	<input type="checkbox"/> Australia	<input type="checkbox"/> China	<input type="checkbox"/> Korea
39.2*31.2* 26	39.2*35*45	39.2*48.6*37.5	40*55*34	39.2*31.2* 26	39.2*35*45
