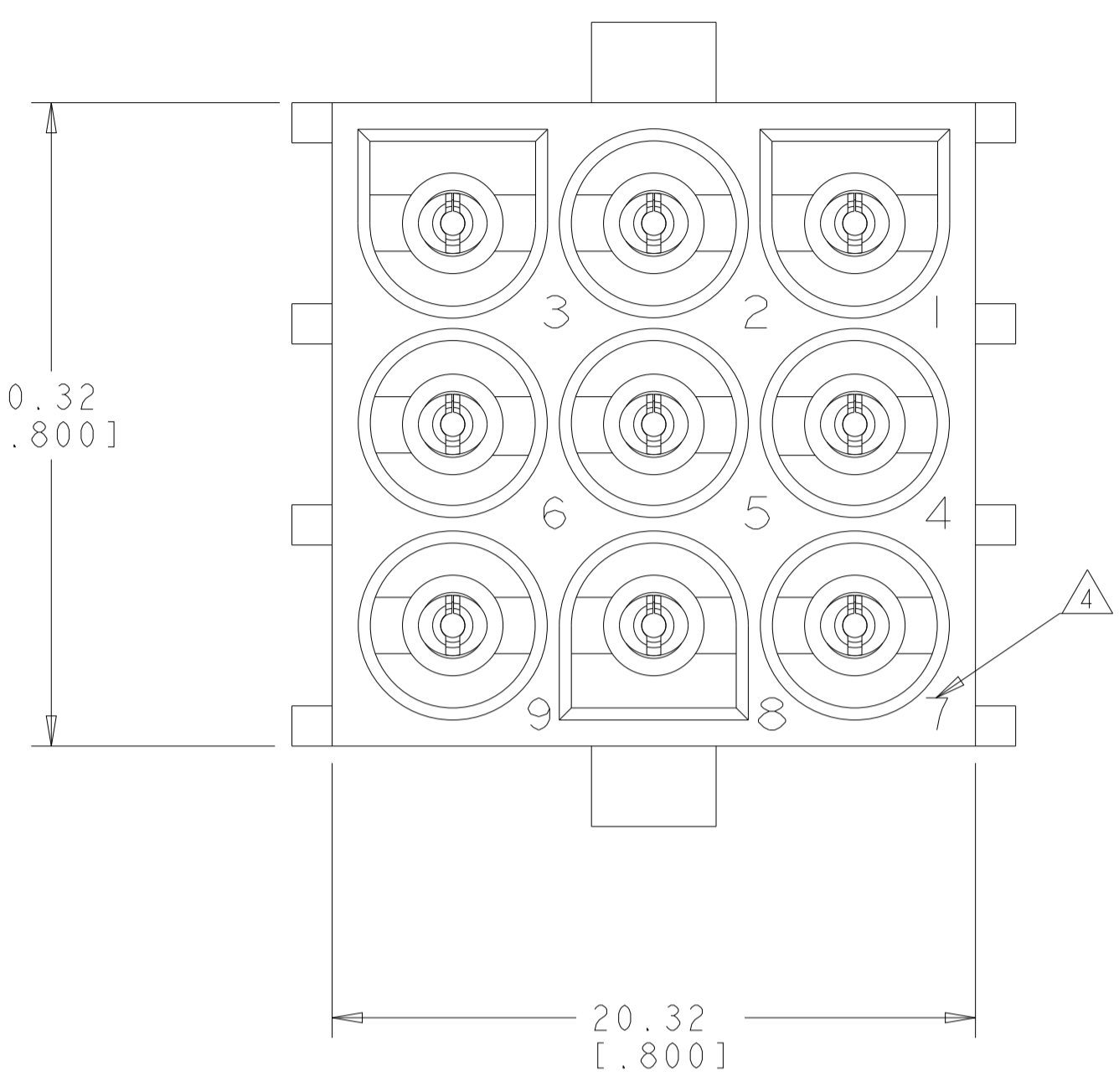
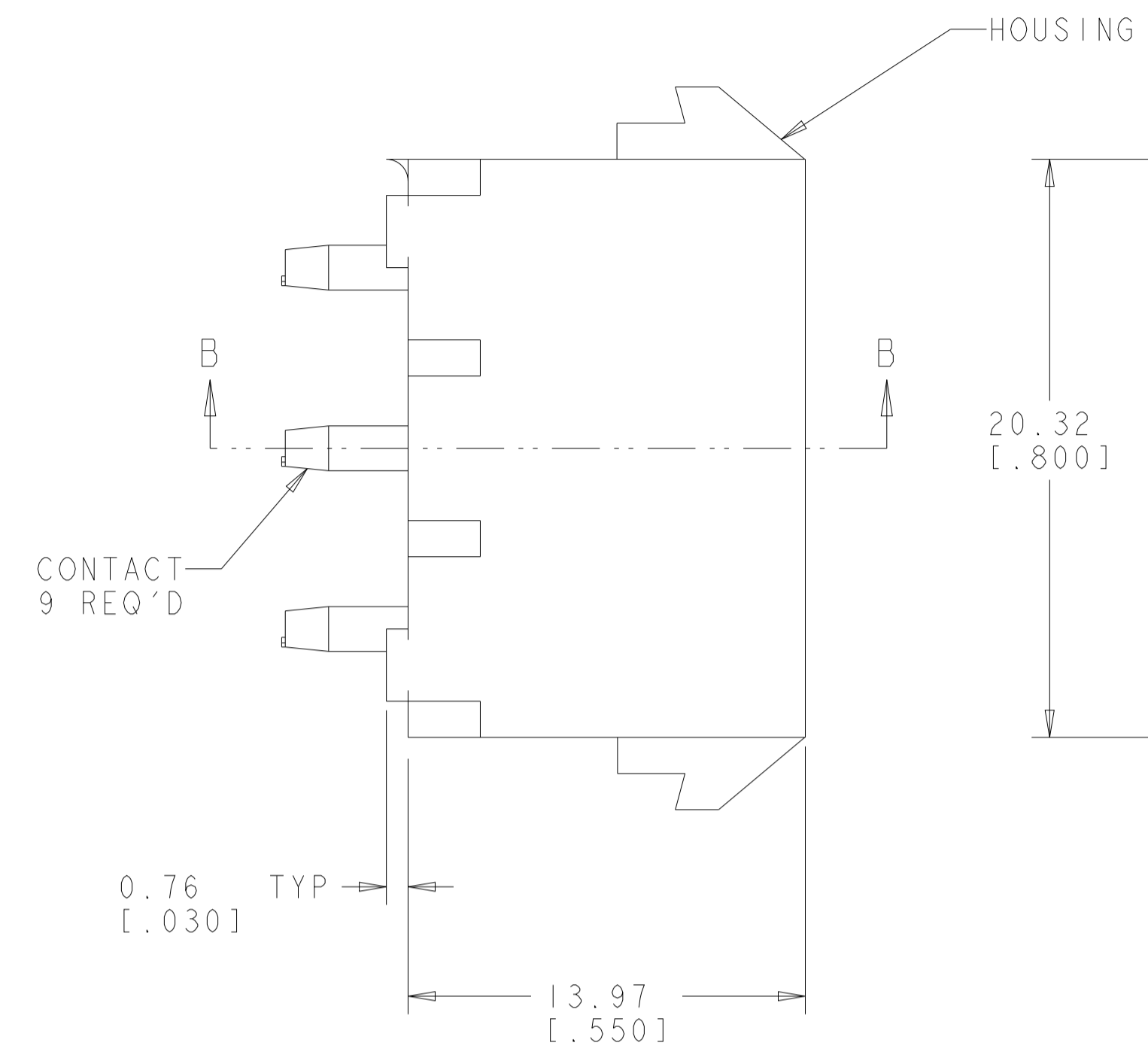
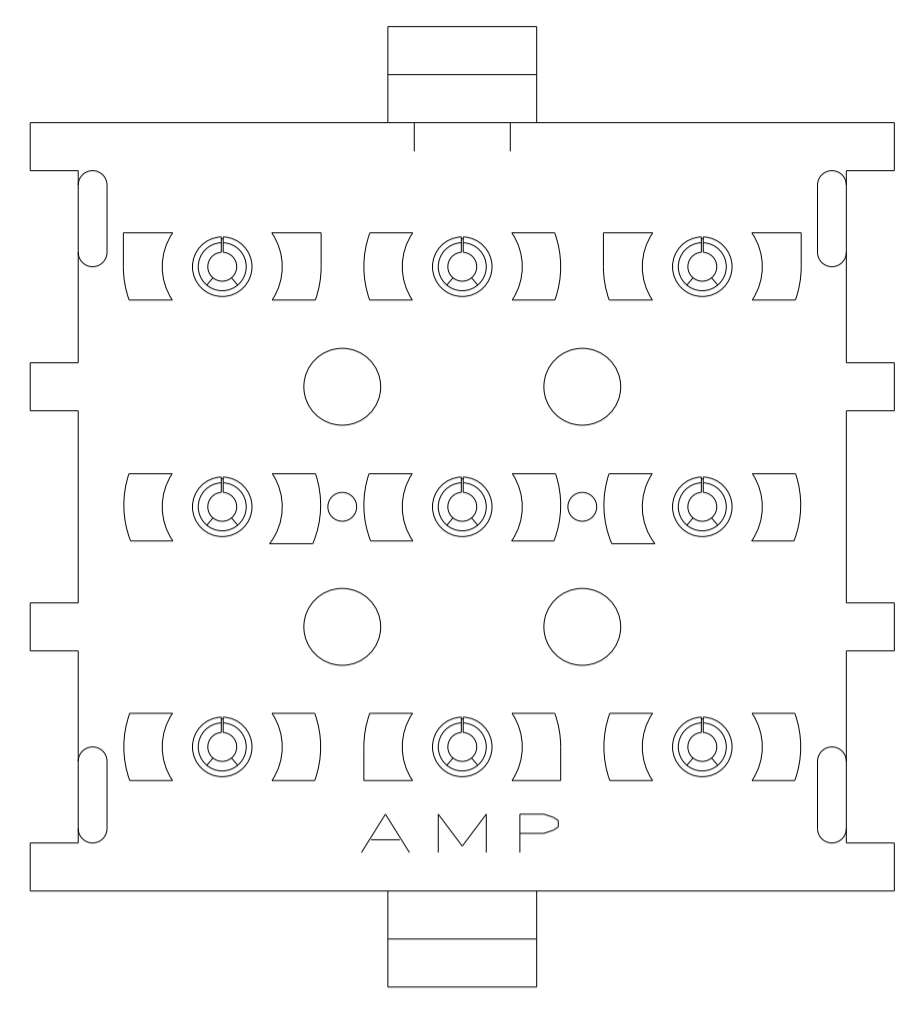
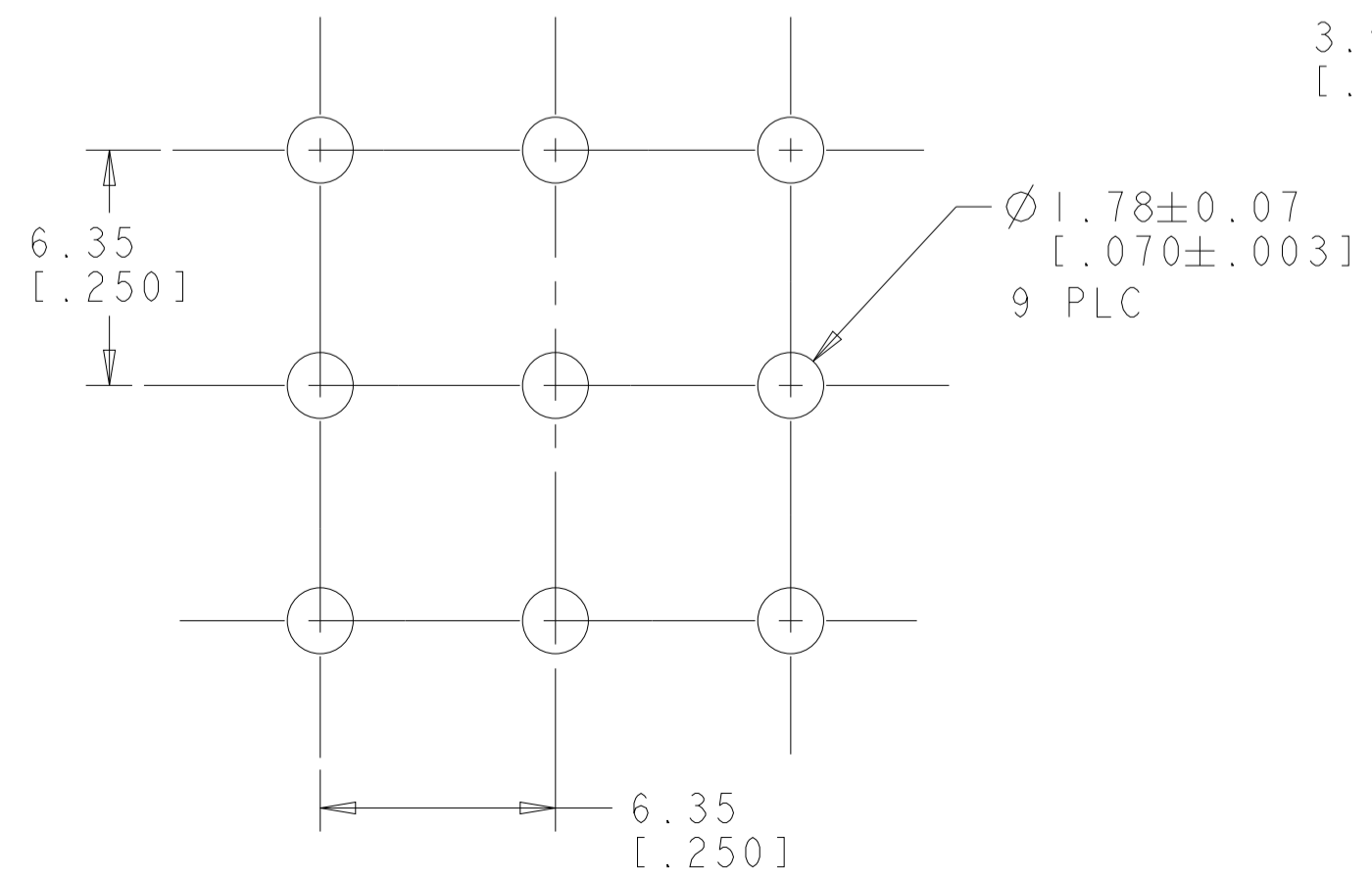
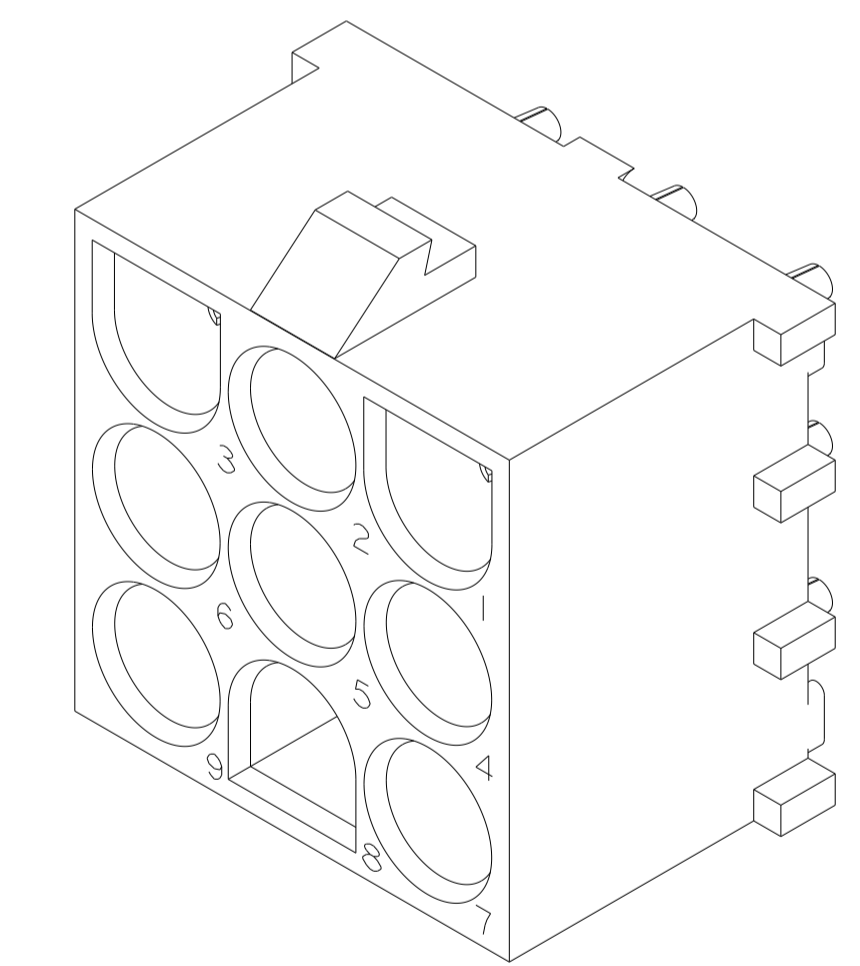
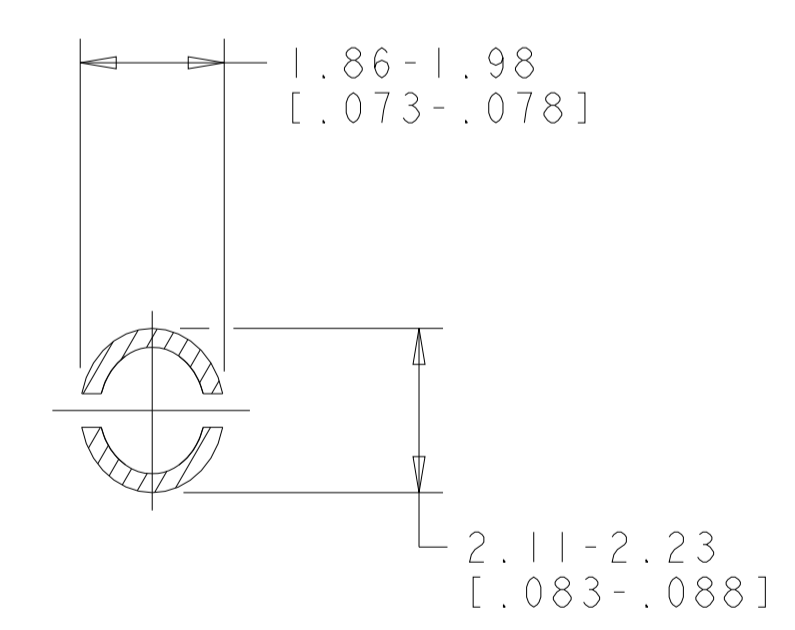
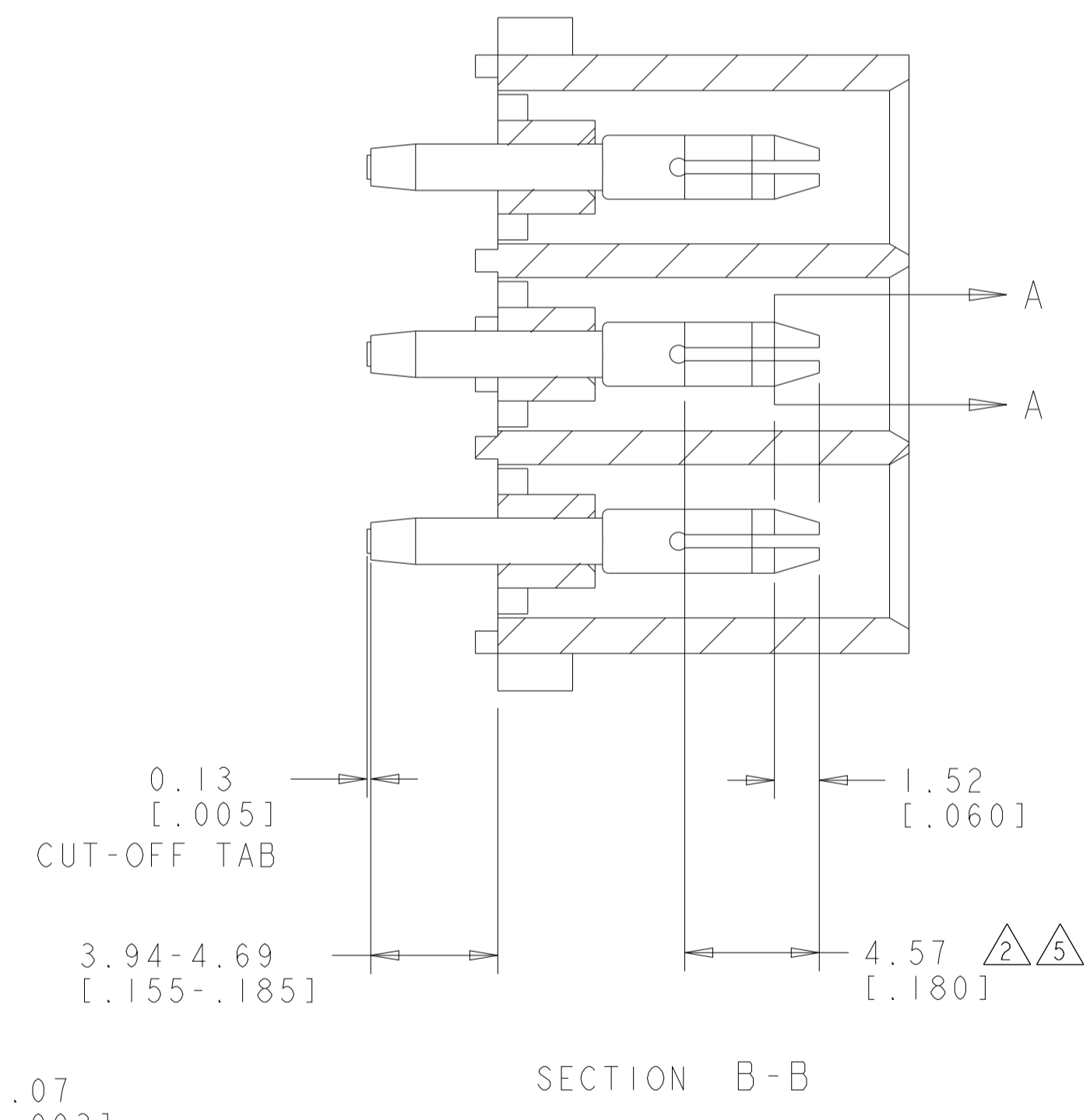


LOC		DIST		REVISIONS			
P	LTN	DATE	DWN	APVD			
W2		REVIS PER ECR-12-011660	24JAN2013	KH	TM		
W3		REVIS PER ECR-21-119230	08NOV2021	SS	VS		

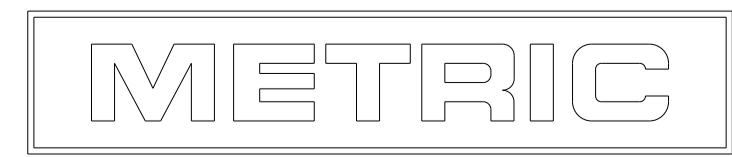


1. PARTS COMPLY TO AMP SOLDERABILITY SPECIFICATION 109-11-3.
2. CONTACT IS PLATED OVERALL WITH 0.00127 [.000050] NICKEL, THEN 0.00076 [.000030] GOLD OVER CONTACT LENGTH INDICATED AND TIN LEAD ON SOLDER TAIL END.
3. MATES WITH HOUSING 480706.
4. CIRCUIT IDENTIFICATION CHARACTERS ARE ADJACENT TO THE INDICATED CAVITIES, BUT LOCATION AND ORIENTATION MAY DIFFER FROM PRINT.
5. CONTACT IS PLATED OVERALL WITH 0.00127 [.000050] NICKEL, THEN 0.00076 [.000030] GOLD OVER CONTACT LENGTH INDICATED AND MATTE TIN ON SOLDER TAIL END.
6. DIMENSIONS IN BRACKETS ARE IN INCHES.
7. SUPERSEDED BY 350432-4
8. DIMENSIONS SHOWN REPRESENT PRODUCT IN DRY CONDITION. ADDITIONAL 2% GROWTH DUE TO END USE LOCATION MOISTURE ABSORPTION MAY OCCUR AND SHOULD BE ACCOUNTED FOR.



RECOMMENDED MOUNTING HOLE PATTERN FOR 1.57 [.062] THICK P.C. BOARD

PHOSPOR BRONZE, GOLD 5	NYLON, UL94V-2,NATURAL	350432-4
4 PHOSPOR BRONZE, GOLD 2	NYLON, UL94V-2,NATURAL	350432-2
PHOSPOR BRONZE, PRE-TIN	NYLON, UL94V-2,NATURAL	350432-1
PIN CONTACT MATERIAL AND FINISH	HOUSING MATERIAL AND COLOR	PART NUMBER



THIS DRAWING IS A CONTROLLED DOCUMENT.		DWN K. WHITAKER 19JULY2005	TE Connectivity
DIMENSIONS: mm [INCHES]		CHK S. RIDGILL 19JULY2005	
TOLERANCES UNLESS OTHERWISE SPECIFIED:		APVD S. RIDGILL 19JULY2005	NAME PIN HEADER ASSEMBLY, 9 CIRCUIT, UNIVERSAL MATE-N-LOK TM
0 PLC ±	1 PLC ±	2 PLC ±	APPLICATION SPEC
3 PLC ±	4 PLC ±	ANGLES ±	FINISH ±
MATERIAL SEE TABLE		FINISH SEE TABLE	RESTRICTED TO
WEIGHT		SIZE	CAGE CODE
CUSTOMER DRAWING		SCALE 1:1	SHEET 1 OF 1