



**Electrical specifications**

**Center Frequency:** 829.5 MHz  
**Bandwidth:** 11 MHz  
**Input / Output Impedance:** 50 Ohms  
**Passband:** 824-835 MHz  
**Passband Insertion Loss:** 3.6 dB Max  
**Passband Ripple:** 0.18 dB Max / 1 MHz  
**Rejection:** 1-700 MHz 32.0 dB Min  
**Rejection 2:** 700-806 MHz 37.0 dB Min  
**Rejection 3:** 806-815 MHz 27.0 dB Min  
**Rejection 4:** 851-869 MHz 52.0 dB Min  
**Rejection 5:** 869-880 MHz 52.0 dB Min  
**Rejection 6:** 880-1500 MHz 32.0 dB Min  
**Power Handling:** 3.0 W Max

**Mechanical**

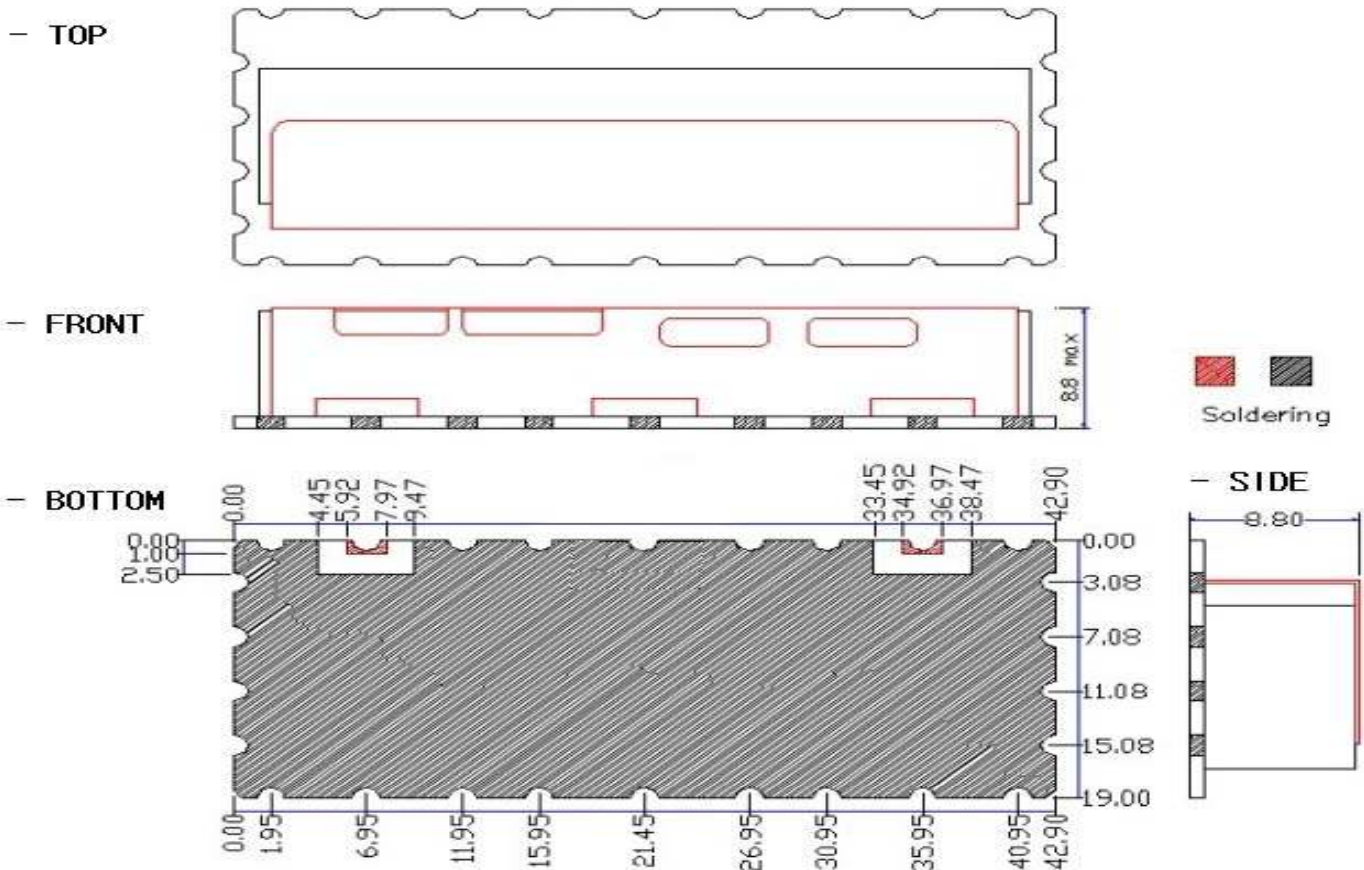
**Mounting Method:** SMT  
**Dimensions:** 42.90 x 19 x 8.8 mm

**Environmental**

**Operating Temperature:** -40°C to +85°C  
**Storage Temperature:** -50°C to +90°C

**This product is RoHs compliant.**

**Outline Drawing:**





**ANATECH ELECTRONICS INC**  
RF & Microwave Filters & Products

# 829.5 MHz Ceramic Bandpass Filter

Part Number: AM829B1230



## Response Plot:

