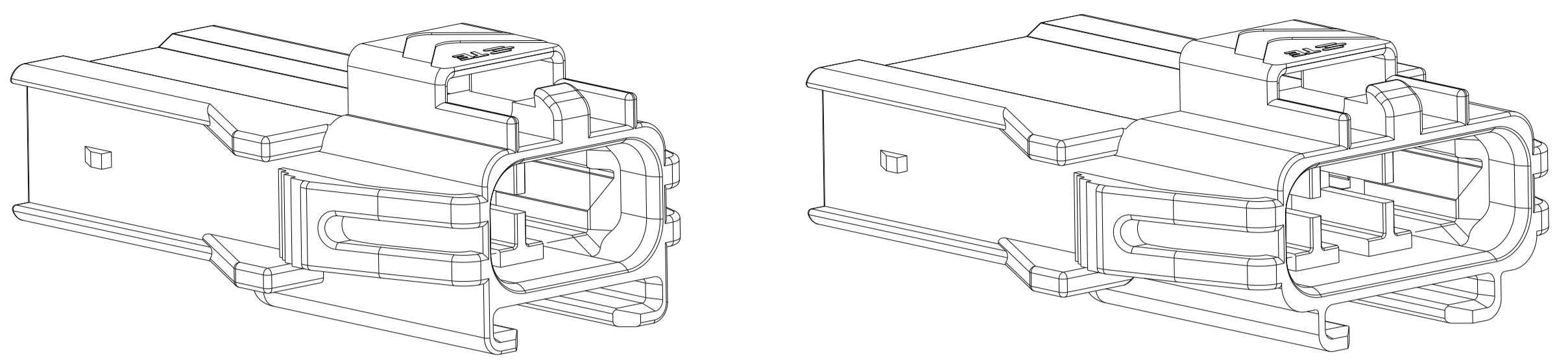
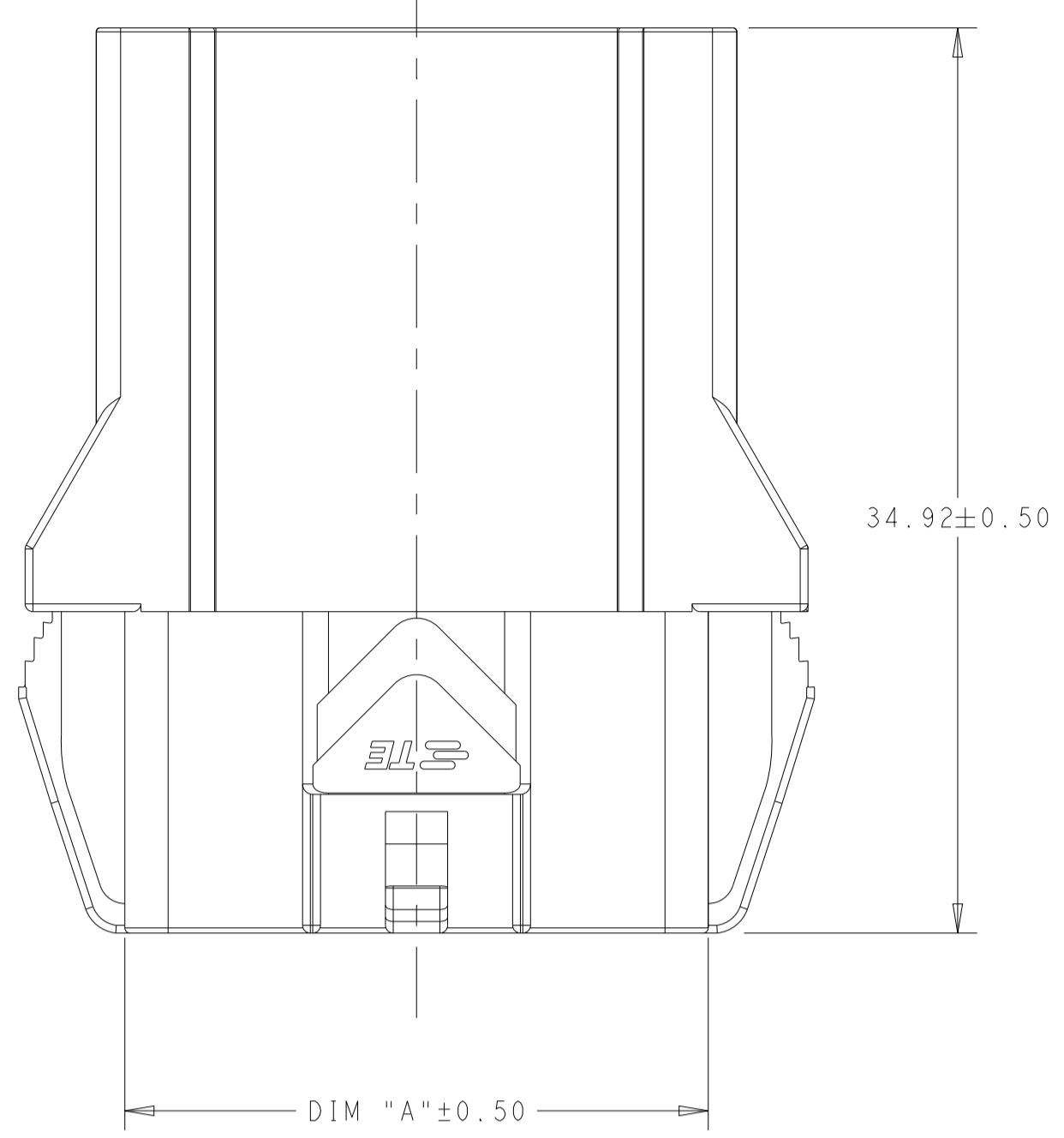
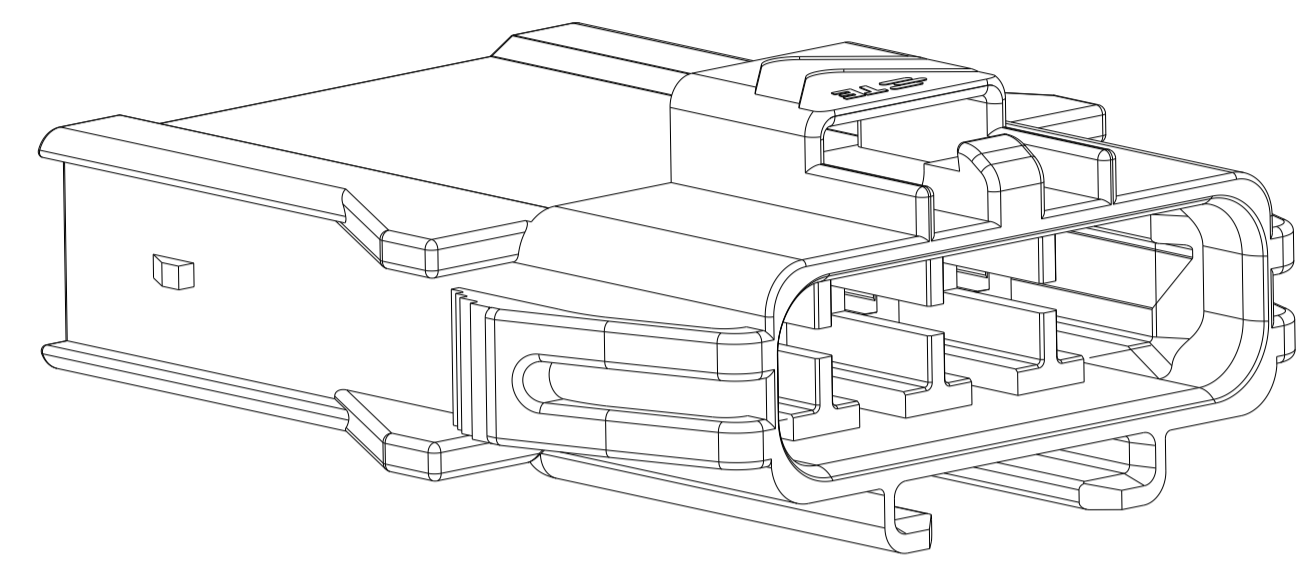


| REVISIONS | | | | | |
|-----------|-----|----------------------------|-----------|-----|------|
| P | LTN | DESCRIPTION | DATE | DWN | APVD |
| A | | RELEASED PER ECN-20-100548 | 30OCT2020 | JP | VS |
| B | | REVISED PER ECR-22-142839 | 28JUL2022 | PJ | VS |



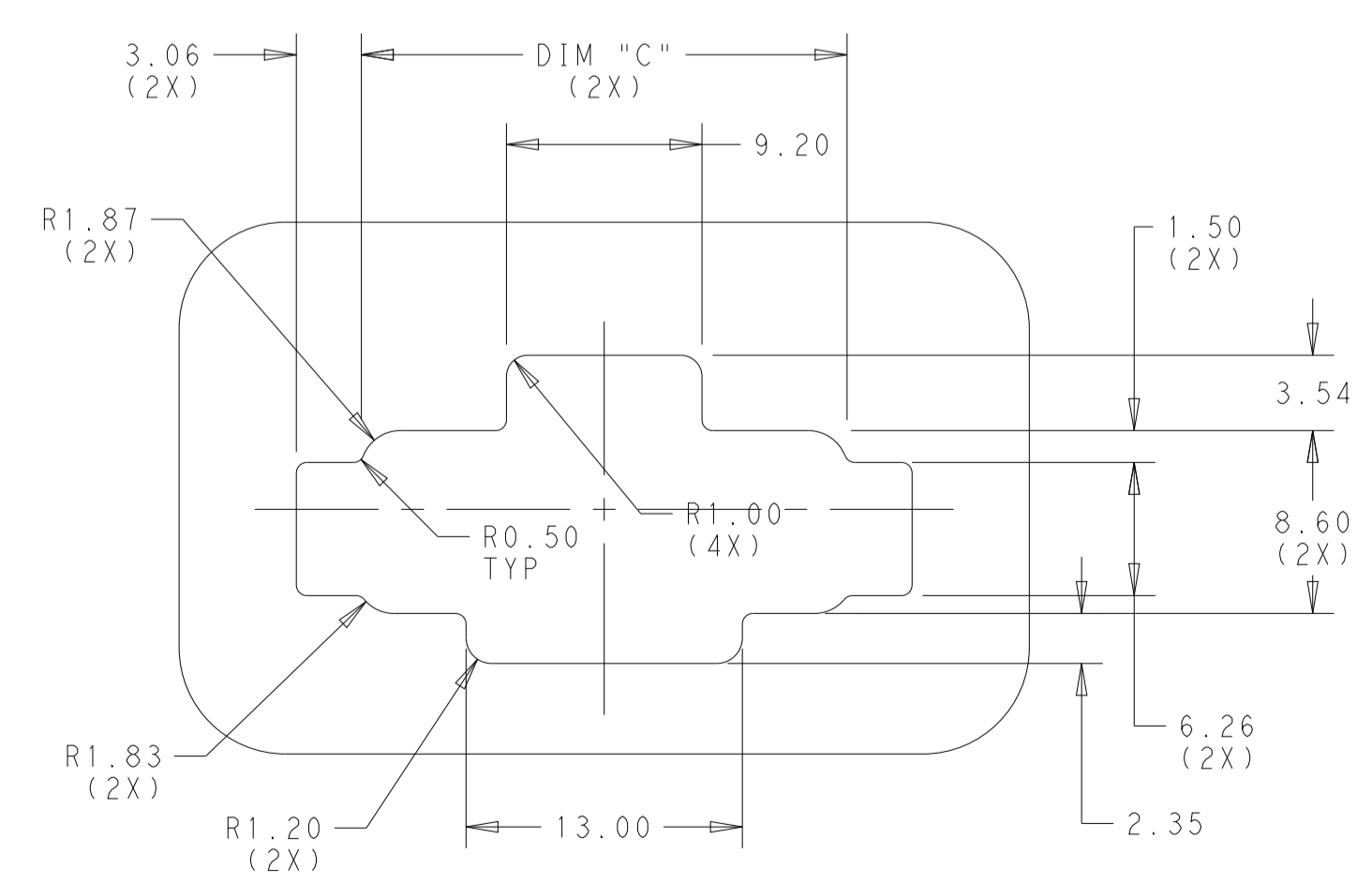
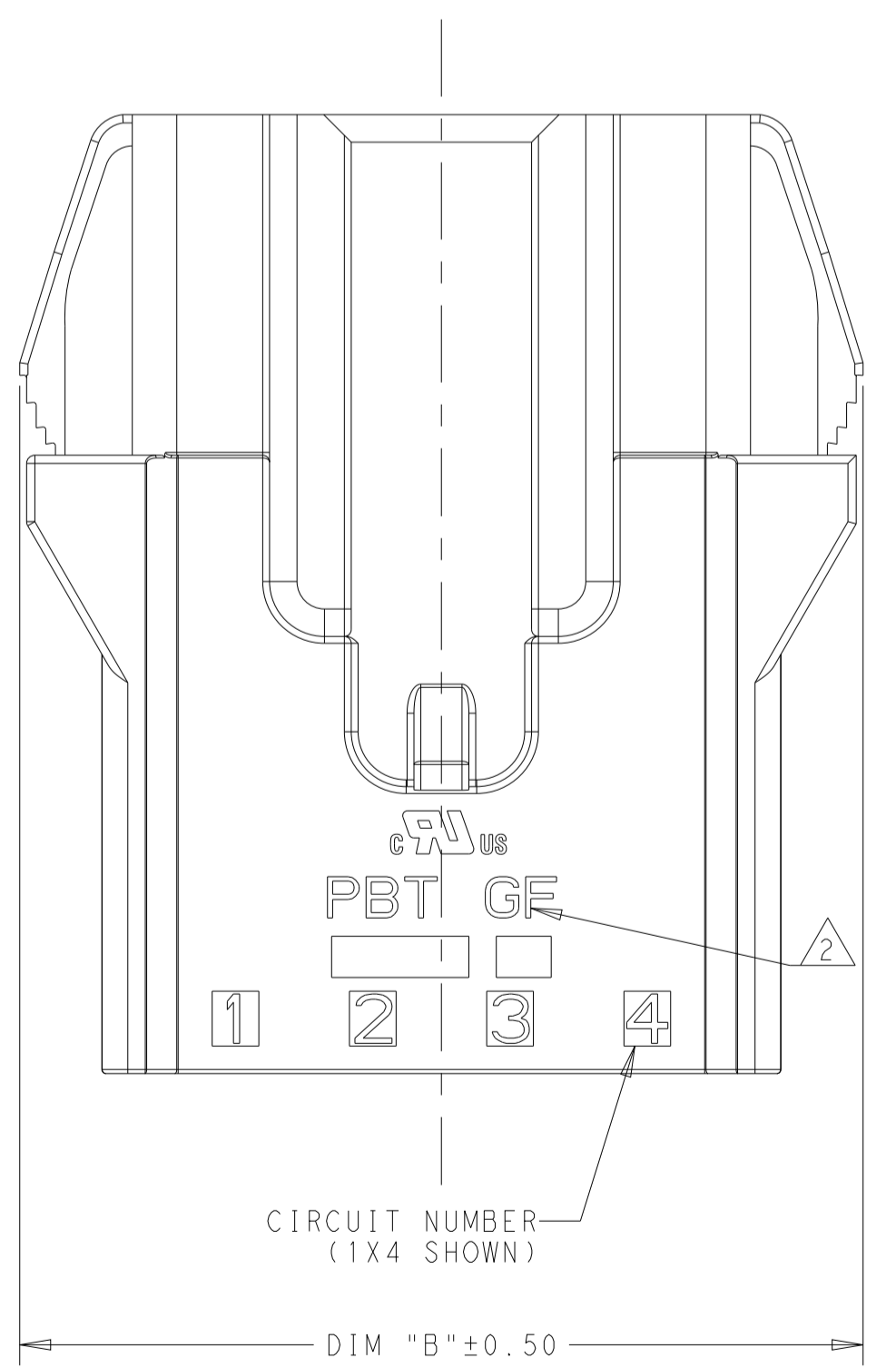
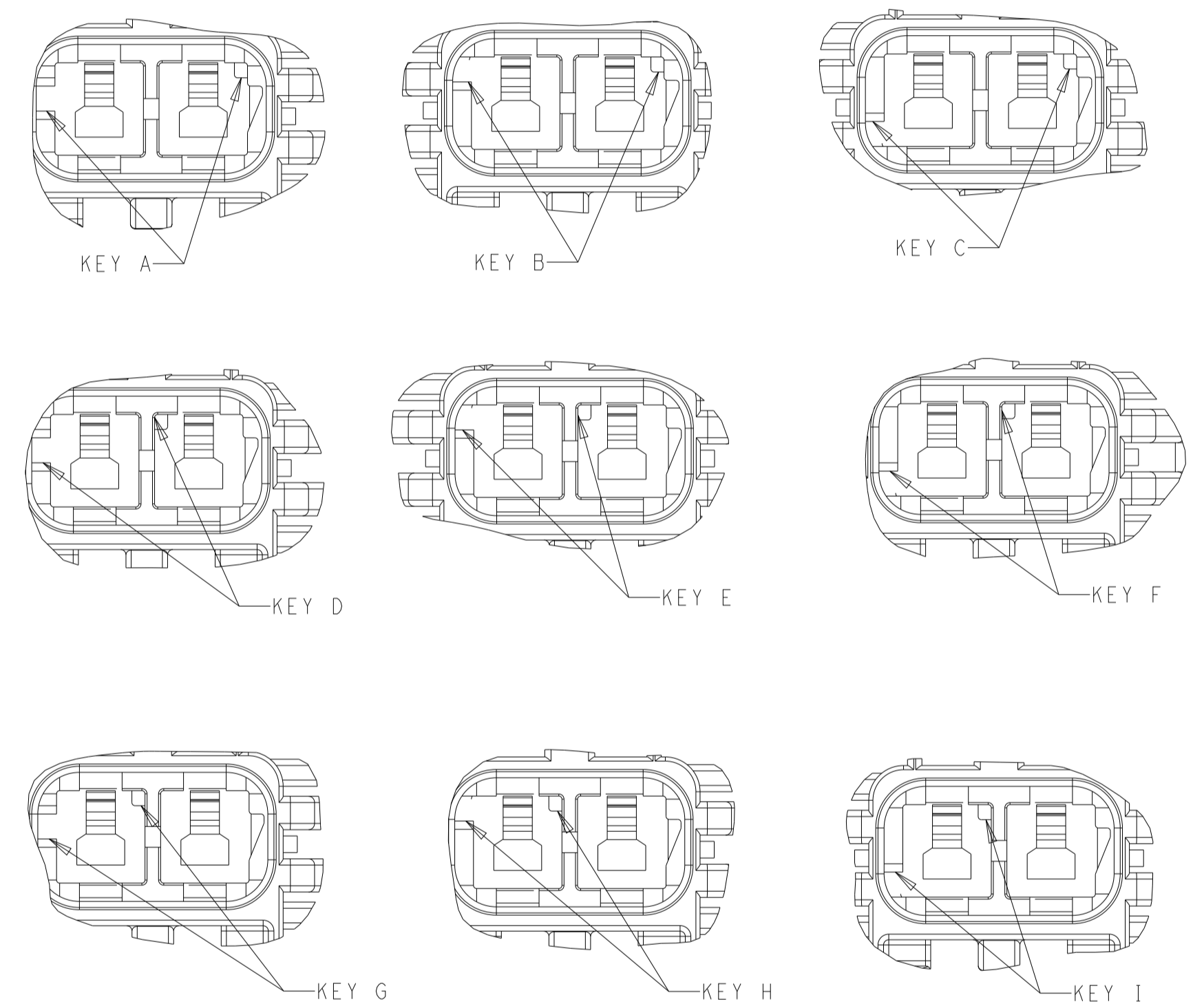
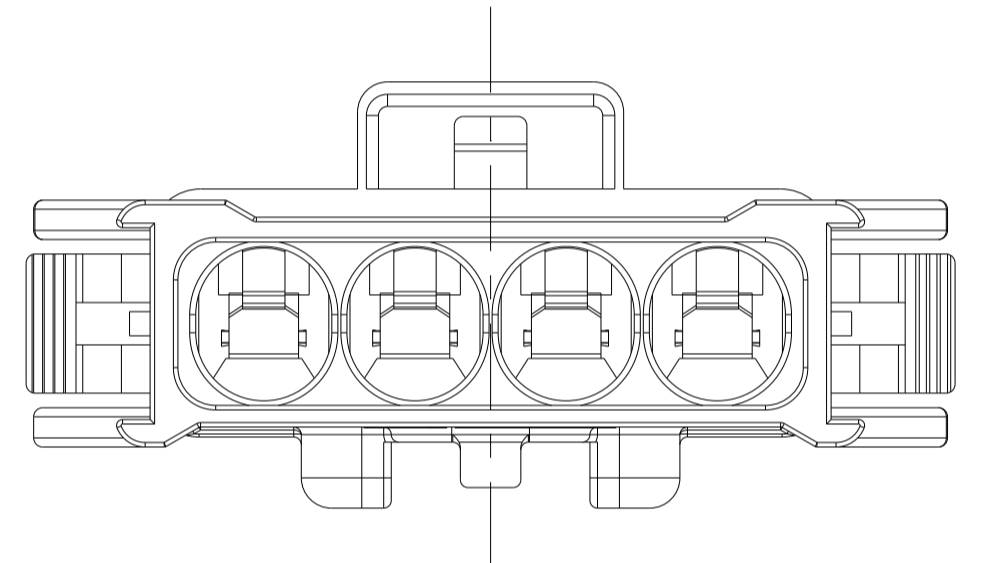
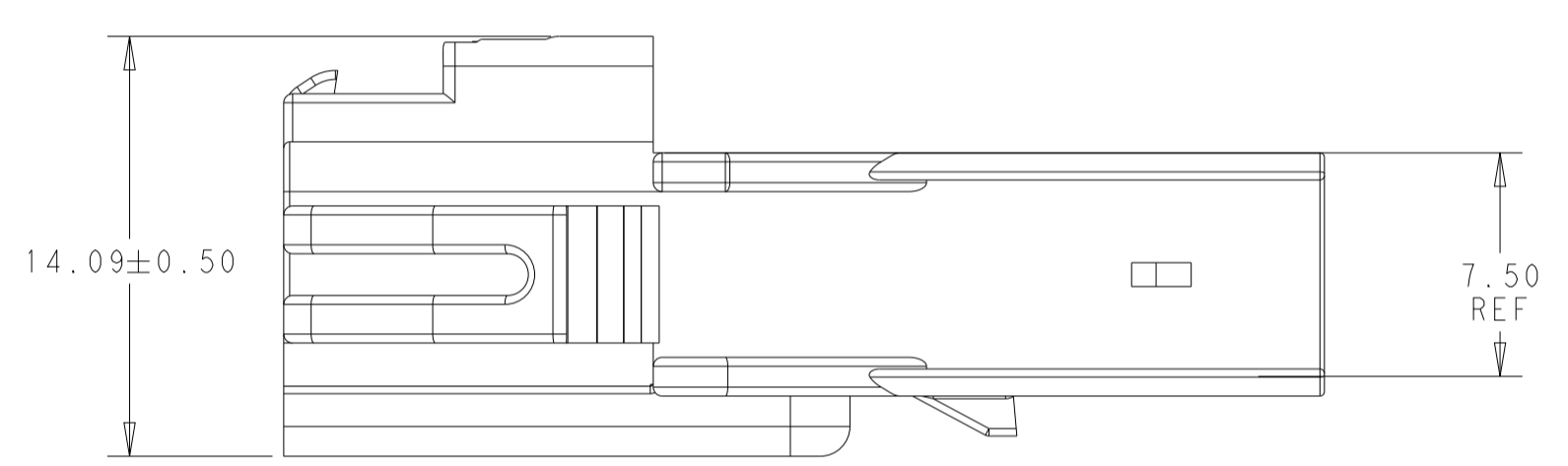
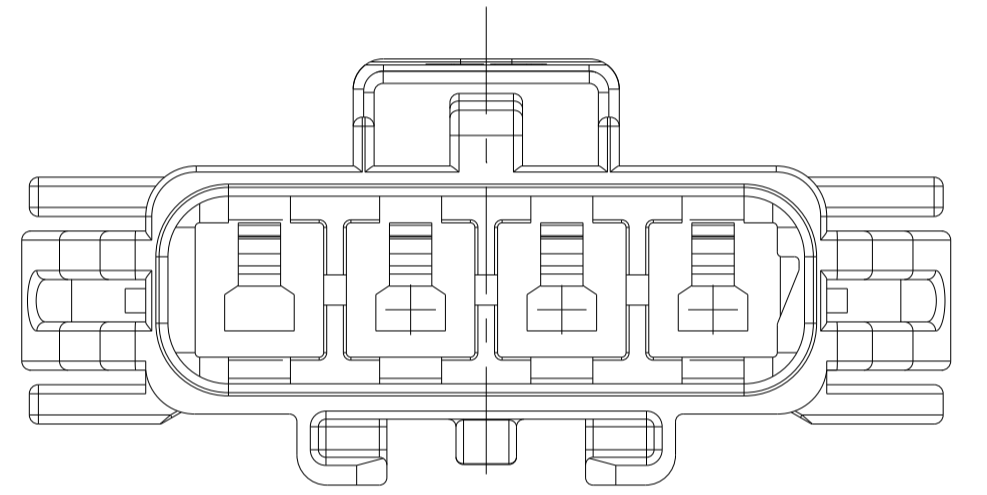
1x2 POSITION

1x3 POSITION

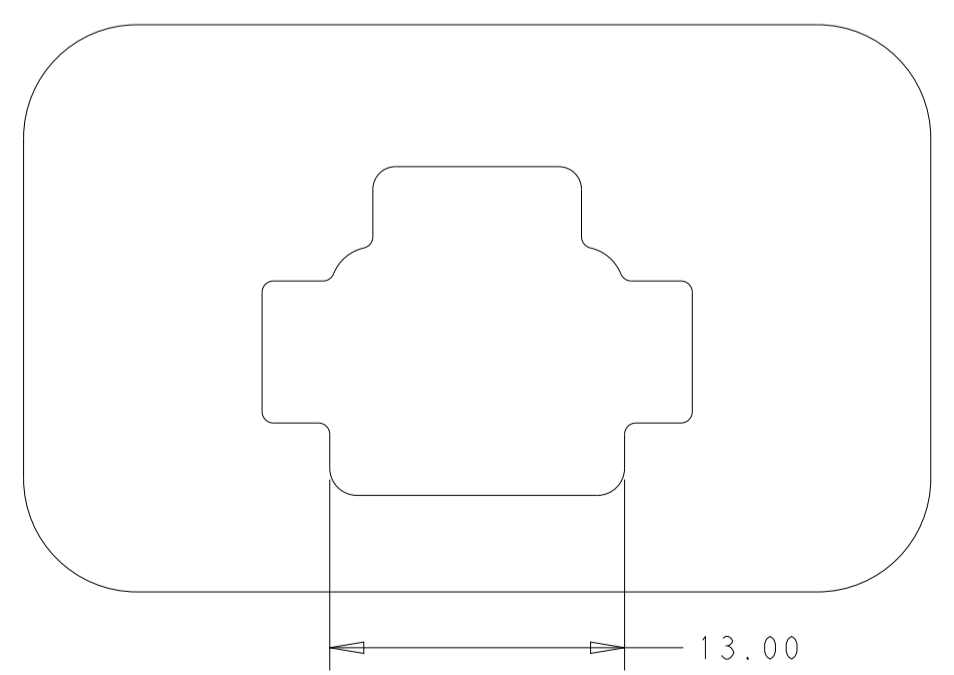


1x4 POSITION

- 1. MATERIAL: PBT, GLASS FILLED
 KEY A: NATURAL; KEY B: GREY; KEY C: BROWN
 KEY D: RED; KEY E: ORANGE; KEY F: VIOLET
 KEY G: YELLOW; KEY H: BLUE; KEY I: GREEN
- 2. MATERIAL MARK: PBT GF
- 3. APPLICABLE CONTACT P/N:
 2329910-*/2329907-*/2329906-*/2329908-*/2329909-*/2329911-*
- 4. MATING CONNECTOR P/N
 PLUG HSG: *2378159-*
 TPA: 2329016-*
 BACK COVER: 2334614-*
 INTERFACE SEAL: 2325347-*
 GANG SEAL: 2325349-*
- 5. RECOMMENDED PANEL THICKNESS: 0.80-2.00
- 6. PANEL MUST BE PUNCHED SO THAT THE HOUSING ENTERS THE PANEL IN THE SAME DIRECTION AS THE PUNCH.
- 7. FLAMMABILITY RATING: UL94 V-0



RECOMMENDED PANEL CUT-OUT
 (ALL DIMENSIONS ±0.15)



(1x2) PANEL CUT-OUT
 (ALL DIMENSIONS ±0.15)

| 22.85 | 30.73 | 22.52 | KEY C | 1*4 | 3-2378158-4 |
|-------|-------|-------|--------|-----------|-------------|
| 22.85 | 30.73 | 22.52 | KEY B | 1*4 | 2-2378158-4 |
| 22.85 | 30.73 | 22.52 | KEY A | 1*4 | 1-2378158-4 |
| 17.85 | 25.73 | 17.52 | KEY C | 1*3 | 3-2378158-3 |
| 17.85 | 25.73 | 17.52 | KEY B | 1*3 | 2-2378158-3 |
| 17.85 | 25.73 | 17.52 | KEY A | 1*3 | 1-2378158-3 |
| 12.85 | 20.73 | 12.52 | KEY I | 1*2 | 9-2378158-2 |
| 12.85 | 20.73 | 12.52 | KEY H | 1*2 | 8-2378158-2 |
| 12.85 | 20.73 | 12.52 | KEY G | 1*2 | 7-2378158-2 |
| 12.85 | 20.73 | 12.52 | KEY F | 1*2 | 6-2378158-2 |
| 12.85 | 20.73 | 12.52 | KEY E | 1*2 | 5-2378158-2 |
| 12.85 | 20.73 | 12.52 | KEY D | 1*2 | 4-2378158-2 |
| 12.85 | 20.73 | 12.52 | KEY C | 1*2 | 3-2378158-2 |
| 12.85 | 20.73 | 12.52 | KEY B | 1*2 | 2-2378158-2 |
| 12.85 | 20.73 | 12.52 | KEY A | 1*2 | 1-2378158-2 |
| DIM C | DIM B | DIM A | KEYING | POSITIONS | PART NUMBER |

THIS DRAWING IS A CONTROLLED DOCUMENT.

| | | | | |
|-------------|---|--|-------------------------|---------------------------|
| DIMENSIONS: | TOLERANCES UNLESS OTHERWISE SPECIFIED: | DWN B. WEAVER 17AUG2020 | CHK D. SWARTZ 17AUG2020 | APVD V. SHETLAR 17AUG2020 |
| mm | 0 PLC ±0.35 1 PLC ±0.25 2 PLC ±0.25 3 PLC ±0.25 4 PLC ±0.25 ANGLES ±0.25 | NAME: CAP HOUSING, PANEL MOUNT, POWER VERSA-LOCK PRODUCT SPEC: 108-143081 APPLICATION SPEC: 114-143082 WEIGHT: - CUSTOMER DRAWING: - | | |

MATERIAL: PBT GF

SCALE: 4:1 SHEET 1 OF 1 REV B