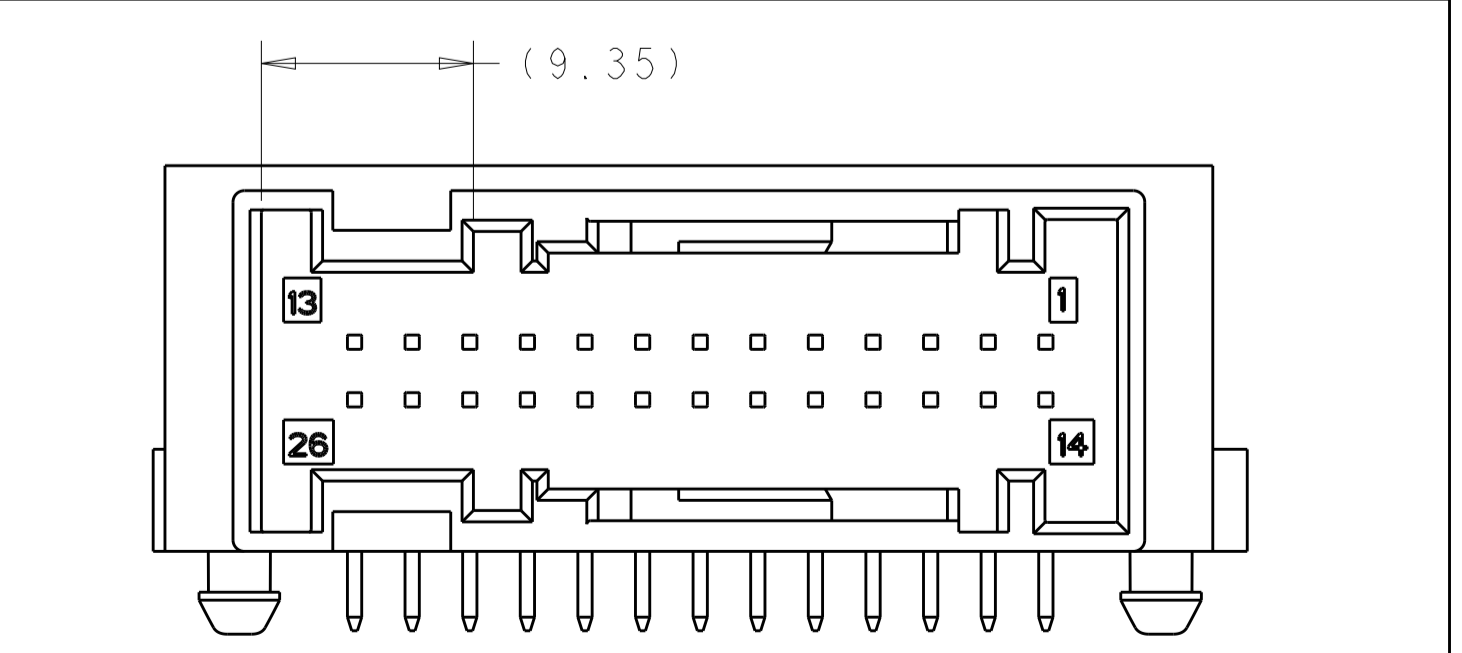
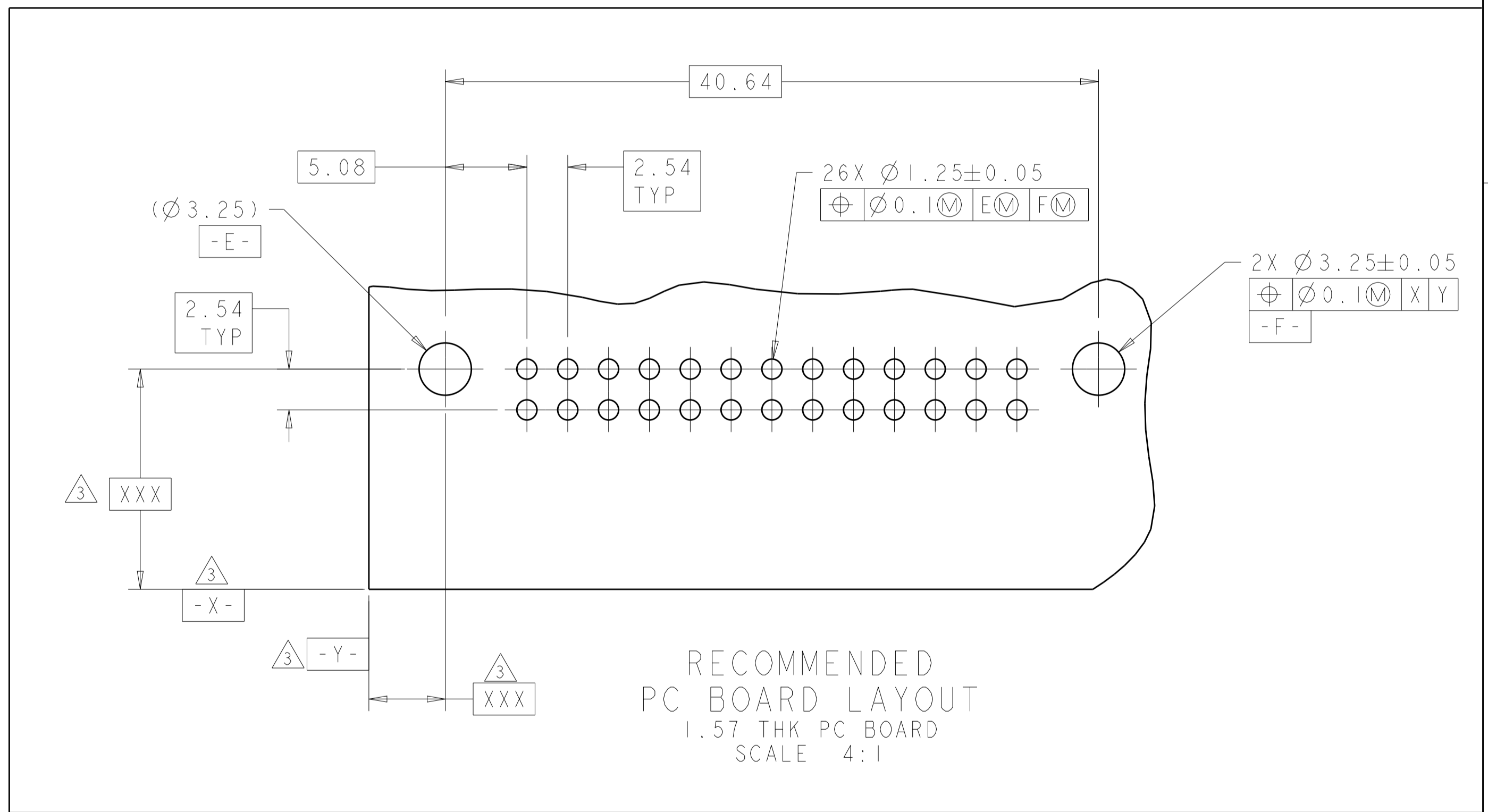
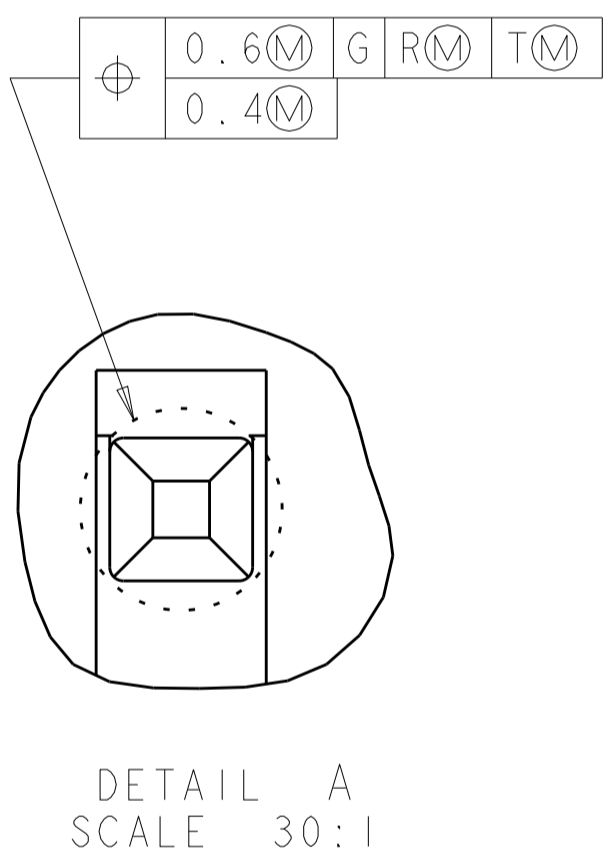
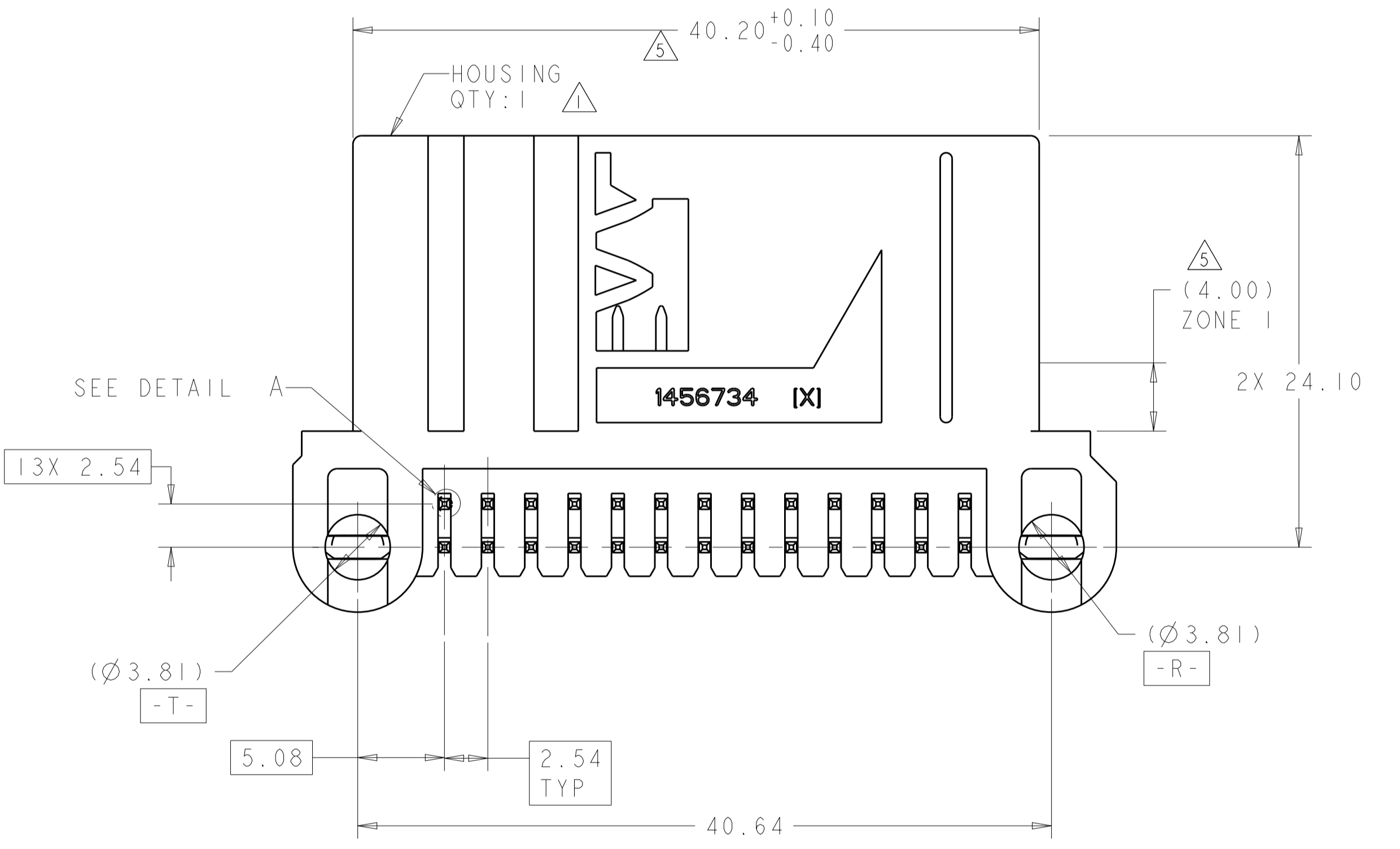
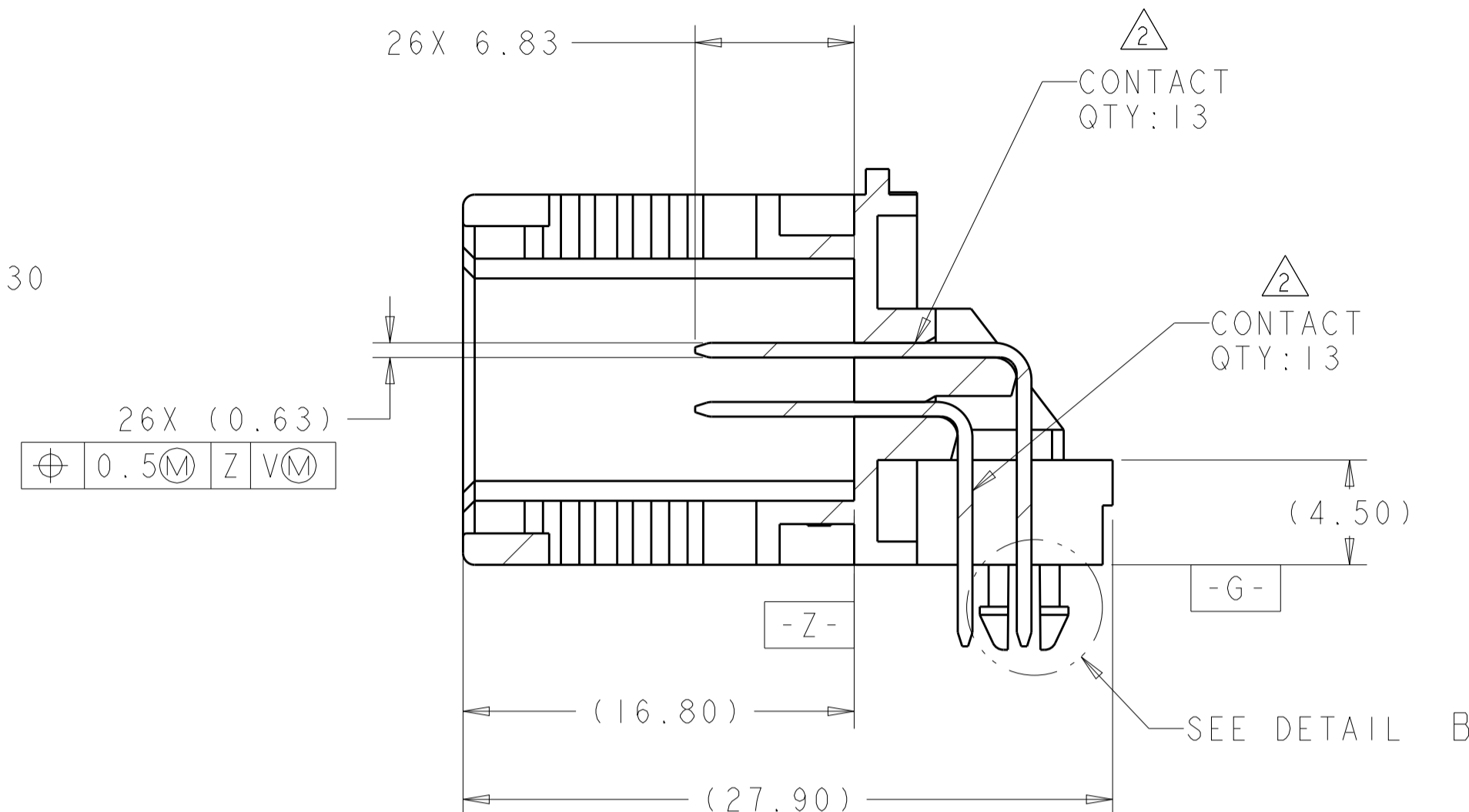
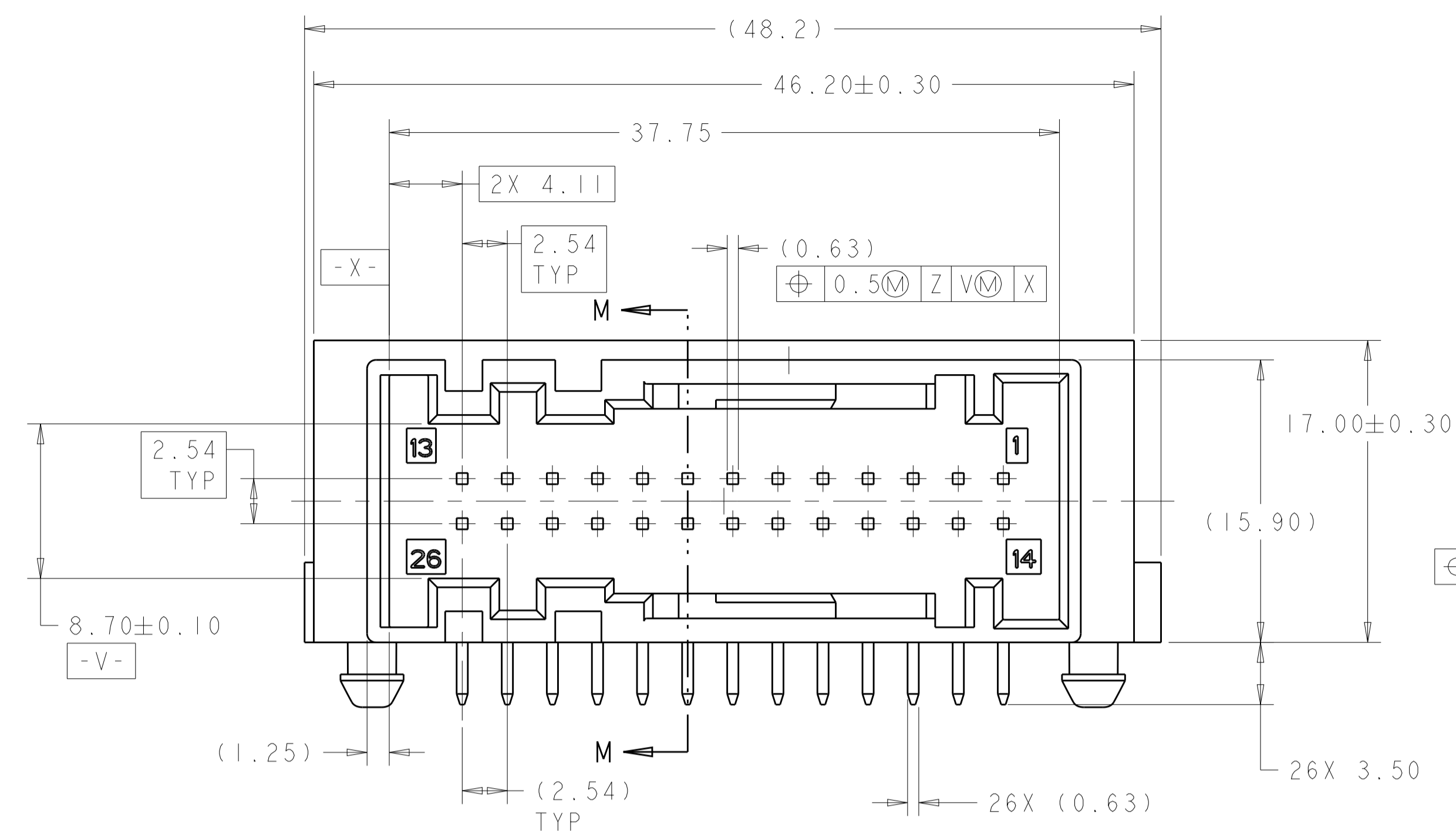


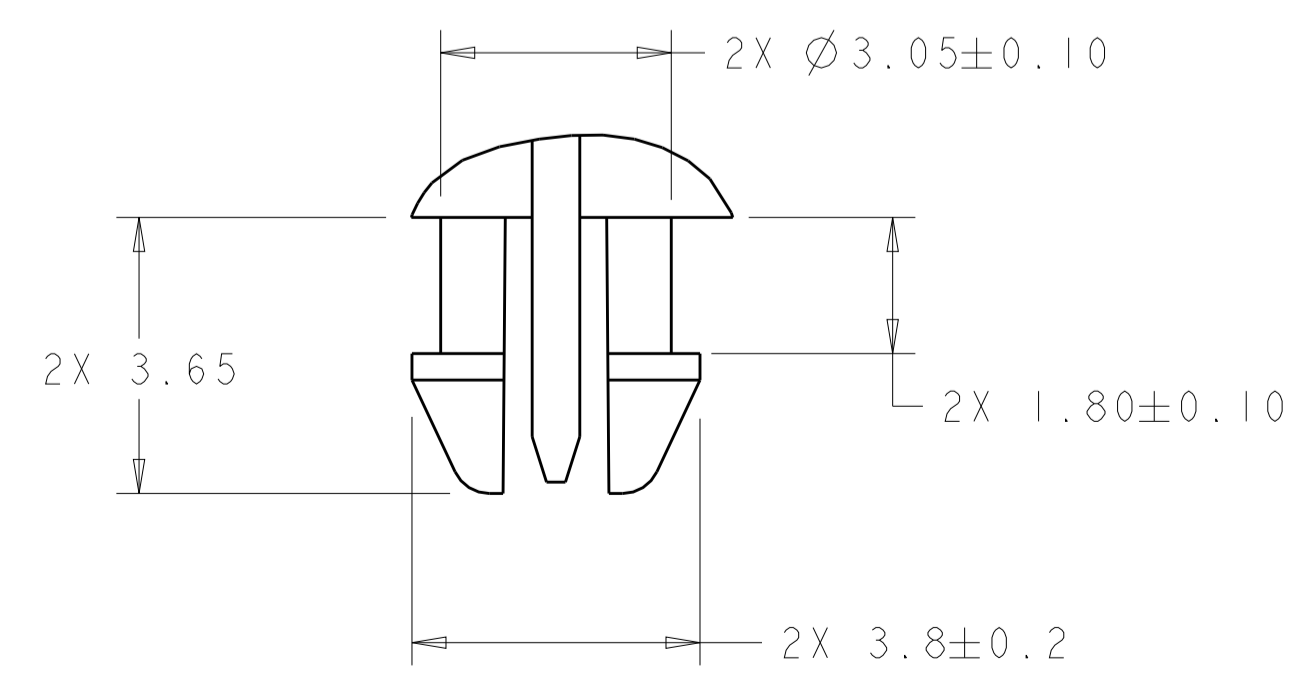
REVISIONS				
P.	LTN	DESCRIPTION	DATE	APVD
A6	REV PER ECR-15-009409		23JUN2015	MBH JS

1456736-2 AS SHOWN
KEYING CODE "BF"

- ① HOUSING: PBT, 20% GLASS
- ② CONTACTS: COPPER ALLOY, TIN OVER NICKEL PLATE
- ③ DATUMS AND BASIC DIMENSIONS ESTABLISHED BY THE CUSTOMER
- ④ N/A
- ⑤ 40.20+0.10/-0.40 MEASURED AT TOP OF SHROUD.
40.20±0.40 MEASURED IN ZONE 1



KEYING CODE "AE"
1456736-1
SCALE 3:1



DETAIL B
SCALE 10:1

KEYING CODE	COLOR	PART NUMBER
"BF"	BLUE	1456736-3
"BF"	BLACK	1456736-2
"AE"	BLACK	1456736-1

THIS DRAWING IS A CONTROLLED DOCUMENT. DWG: H. MOLL 15MAY2006. CHK: J. SLUSSER 30MAY2006. APVD: J. SLUSSER 30MAY2006. NAME: J. SLUSSER. PRODUCT SPEC: APPLICATION SPEC: WEIGHT: A1. SIZE: CAGE CODE: DRAWING NO: RESTRICTED TO: C=1456736. Customer Drawing. SCALE: SHEET 1 OF 1. REV: A6.

STE TE Connectivity

HEADER ASSY, 26 WAY, RIGHT ANGLE, WITH BOARDLOCKS, RIGHT CABLE EXIT, (INVERTED INTERFACE), MQS