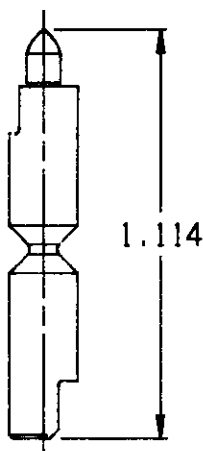
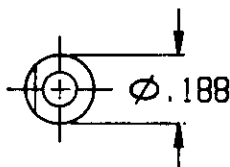


| | | | | | | | |
|-----|------|-----------|-----|-----------------------------|---------|-----|------|
| LOC | DIST | REVISIONS | | | | | |
| AD | 47 | P | CTR | DESCRIPTION | DATE | DWN | APVD |
| | | A | | REVISED PER EC 0430-0037-97 | 6-13-97 | JG | DM |



THIS DRAWING IS UNPUBLISHED.

RELEASED FOR PUBLICATION .18 . ALL RIGHTS RESERVED.

BY AMP INCORPORATED. COPYRIGHT 19

767523-1
PART NUMBER

| | | | | | | | |
|--|------------------|-----------|----------|--|-----------------|--------|------------|
| DIMENSIONS: INCHES | DWN | J. GERACE | 9-18-88 | MATERIAL | STAINLESS STEEL | FINISH | - |
| | CHK | P. MATAR | 9-18-88 | AMP AMP Incorporated Harrisburg, PA 17105-3608 | | | |
| TOLERANCES UNLESS OTHERWISE SPECIFIED: | APVD | A. MONK | 9-18-88 | | | | |
| 0 PLC ±- | PRODUCT SPEC | - | NAME | BOARD LOCATOR PIN | | | |
| 1 PLC ±- | APPLICATION SPEC | - | SIZE | A4 | CAGE CODE | 00779 | DRAWING NO |
| 2 PLC ±- | WEIGHT | - | C=767523 | | SCALE | 2:1 | SHEET |
| 3 PLC ±.005 | CUSTOMER DRAWING | SCALE | | 2:1 | SHEET | 1 OF 1 | REV |
| 4 PLC ±- | | | | | | | A |
| ANGLES ±- | | | | | | | |

