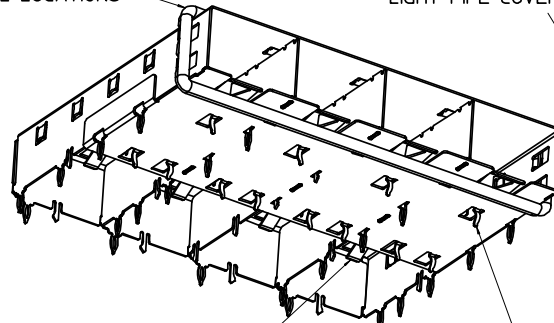


360° ELASTOMER GASKET COMPLIES WITH (SFP) MSA BOARD AND BEZEL LOCATIONS

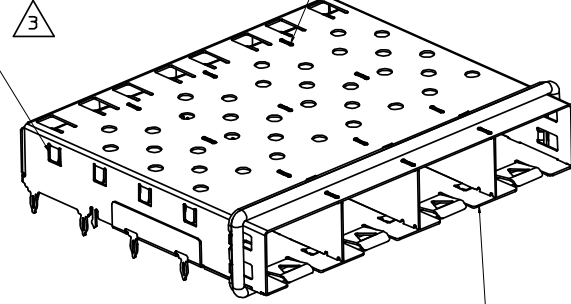
HOOKS USED WITH OPTIONAL LIGHT PIPE COVER ASSEMBLY

INNER WALL TABS ARE COINED OVER BASE AND COVER FOR RIGIDITY

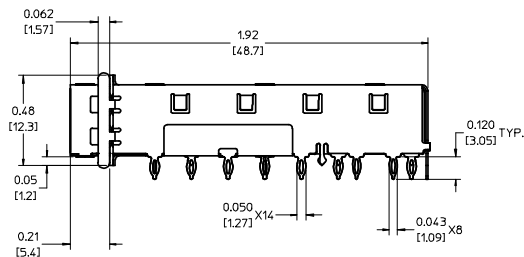


EMI FINGERS CONTACT ADAPTER

12 UNDER BELLY EMI PINS



DIMENSIONS OF EACH INNER CAGE DESIGNED TO FUNCTION WITH SMALL FORM-FACTOR PLUGGABLE (SFP) TRANSCEIVER



NOTES:

- PRESS FIT LEGS 0.120" LONG-
0.062 [1.57] MINIMUM PCB THICKNESS FOR SINGLE SIDED USE.
0.118 [3.00] MINIMUM PCB THICKNESS FOR BELLY TO BELLY USE.
- MATERIAL: COPPER ALLOY
PLATING: NONE

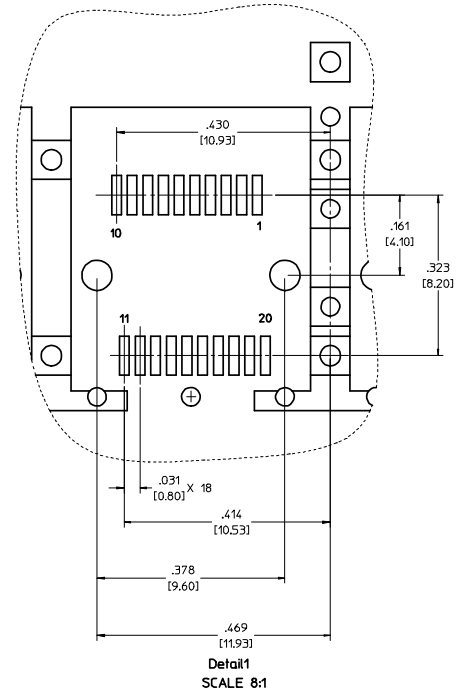
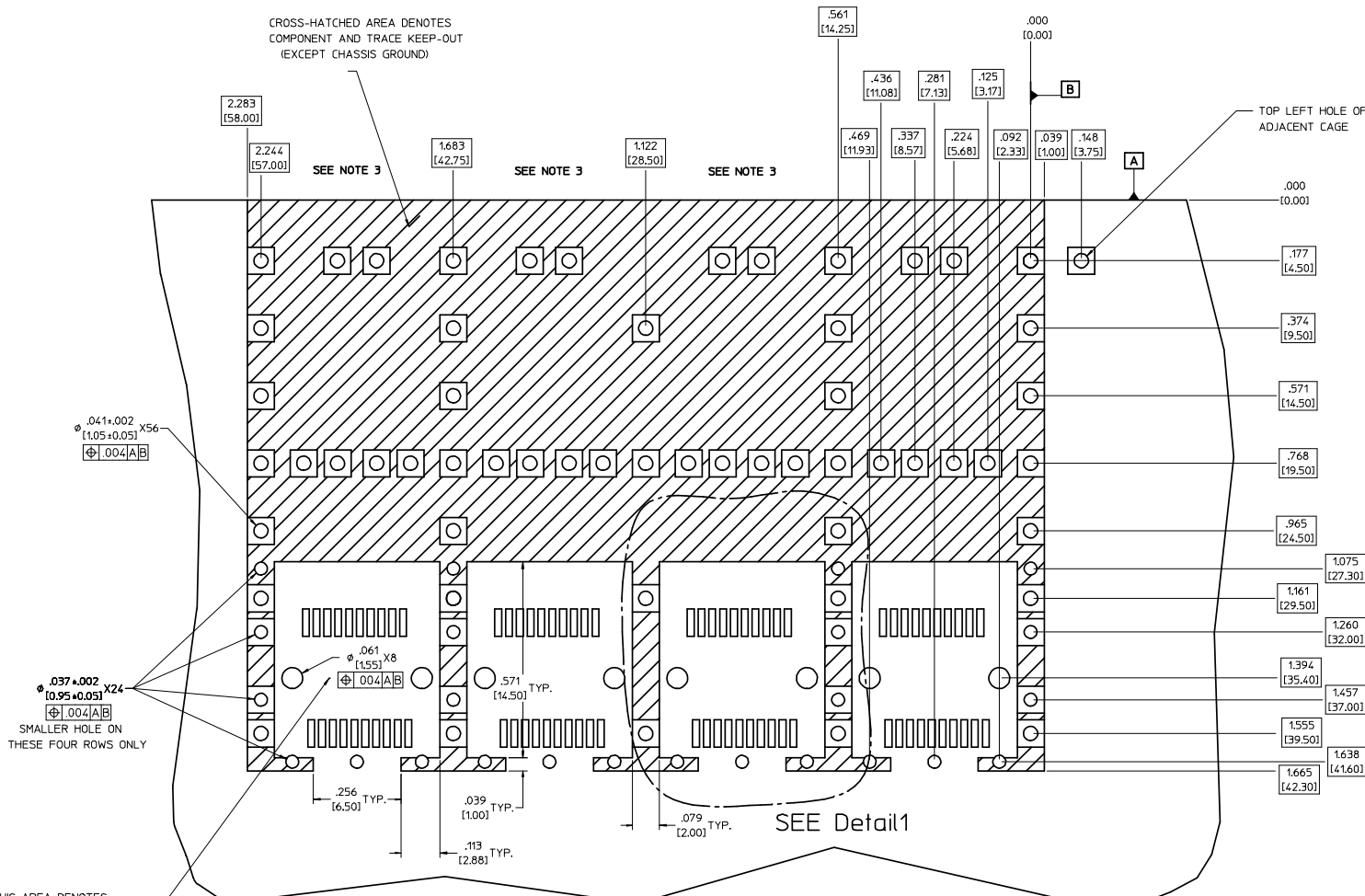
NOTE: A PRE-PLATED NICKEL VERSION IS AVAILABLE.
REFER TO DOCUMENT SD-74728-420
- REFERENCE DOCUMENTS:
COSMETIC SPECIFICATIONS: WI-HP-7-2774 AND WI-HPA-7-0093
TEST SUMMARY: TS-74728-0415
- MATES WITH SERIES 74728, LIGHT PIPE COVER ASSEMBLY.
- THIS PART MEETS THE RESTRICTION OF HAZARDOUS SUBSTANCES IN ELECTRICAL AND ELECTRONIC EQUIPMENT (ROHS) DIRECTIVE (2002/95/EC).

| | | | | | | | | |
|---|-----------------------------|---------------------------------------|-----------------------|-----------------------|------------------------|--|--|--|
| REMOVED L TPIES EC NO: 2007/02/27 DRWN:CCOX CHKD: 2007/03/02 APPR: RMAHMOOD007/03/02 | QUALITY SYMBOLS -0 -0 | GENERAL TOLERANCES (UNLESS SPECIFIED) | SCALE 3:1 | DESIGN UNITS METRIC | THIRD ANGLE PROJECTION | REVISE ON CAD ONLY | | |
| | | .mm INCH | DIMENSION STYLE IN/MM | | TITLE | | | |
| | | 4 PLACES ± --- ± --- | 3 PLACES ± --- ± .005 | 2 PLACES ± 0.13 ± .01 | 1 PLACE ± 0.25 ± --- | 1X4 SFP GANGED CAGE ASSY, W/0.062" OD GASKET SALES DRAWING | | |
| | | ANGULAR ± 1° | | | | MOLEX INCORPORATED | | |
| DRAFT WHERE APPLICABLE MUST REMAIN WITHIN DIMENSIONS | | APPROVED BY RMAHMOOD 2007/02/27 | | DATE 2007/02/27 | | MATERIAL NO. 747280416 | | |
| | | DRAWN BY CCOX | | DATE 2007/02/27 | | DOCUMENT NO. SD-74728-416 | | |
| | | CHECKED BY RMAHMOOD | | DATE 2007/02/27 | | SHEET NO. 1 OF 5 | | |
| | | APPROVED BY RMAHMOOD | | DATE 2007/02/27 | | | | |
| THIS DRAWING CONTAINS INFORMATION THAT IS PROPRIETARY TO MOLEX INCORPORATED AND SHOULD NOT BE USED WITHOUT WRITTEN PERMISSION | | | | | | | | |

PCB LAYOUT FOR BELLY TO BELLY MOUNTING

CROSS-HATCHED AREA DENOTES
COMPONENT AND TRACE KEEP-OUT
(EXCEPT CHASSIS GROUND)

HOST CONNECTOR DETAIL



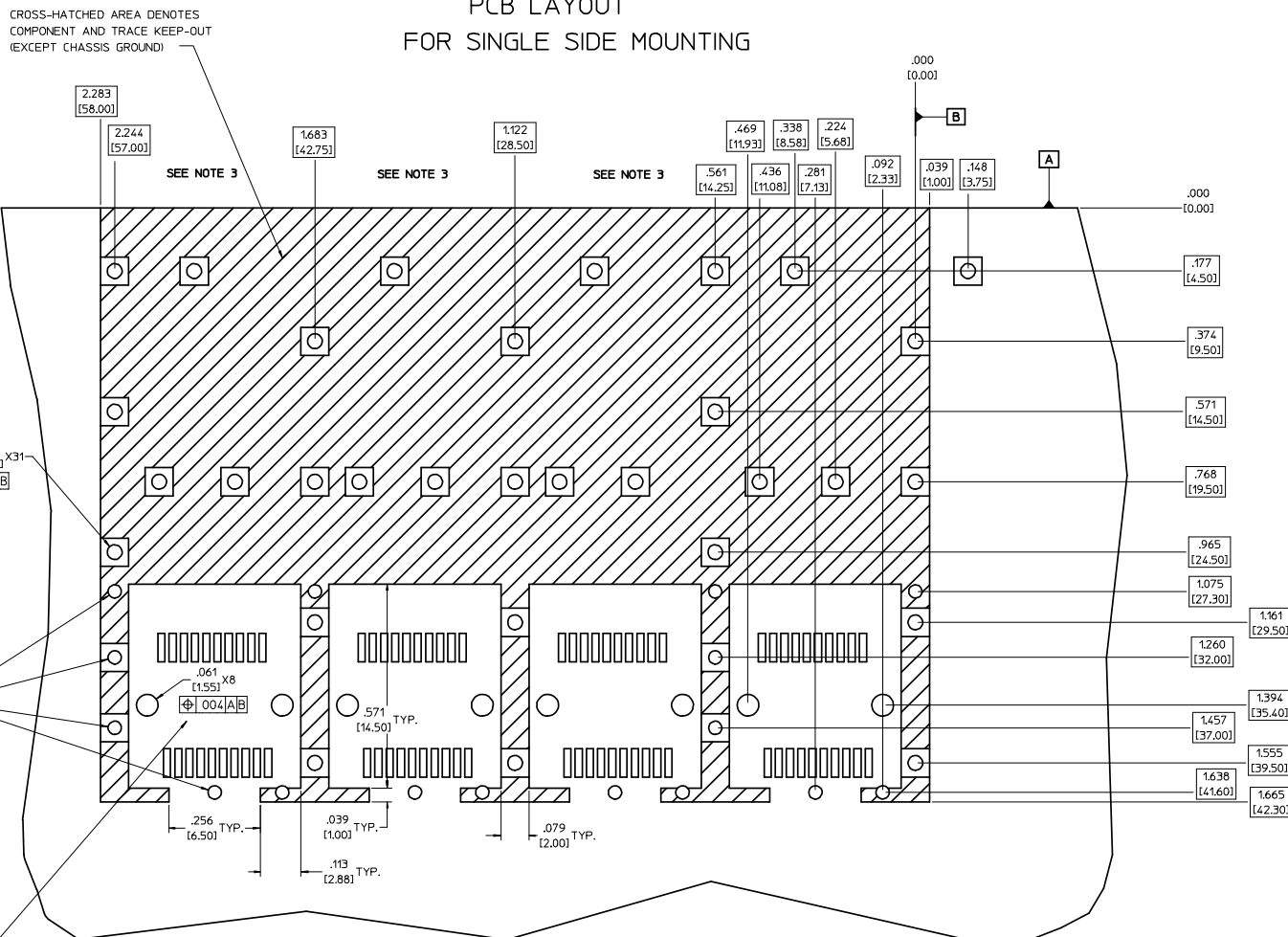
THIS AREA DENOTES
COMPONENT KEEP-OUT
(TRACES ALLOWED)

- NOTES:**
- PADS AND VIAS GO TO CHASSIS GROUND, (64 PLACES). RECOMMENDED PADS TO BE 2mm SQUARE
 - PLATING OPTIONAL FOR THROUGH HOLES, (16 PLACES).
 - RECOMMENDED PLATING INCLUDES HASL, IMMERSION (GOLD, SILVER, OR TIN), AND OSP.
 - HOLE PATTERN REPEATS FOR EACH PORT. SPACING BETWEEN PORTS IS 5.61 [14.25]

| | | | | | | |
|---|------------------------------|---|--|---|------------------------|---------------------------|
| REMOVED L TYPES EC NO: DRMN/CCOX CHKD: 2007/03/02 APPR: RMAHMOOD/03/02 | QUALITY SYMBOLS | GENERAL TOLERANCES (UNLESS SPECIFIED) | SCALE: 6:1 | DESIGN UNITS: METRIC | THIRD ANGLE PROJECTION | REVISE ON CAD ONLY |
| | $\nabla = 0$ $\nabla = 0$ | .mm .INCH 4 PLACES ± --- ± --- 3 PLACES ± --- ± .005 2 PLACES ± 0.13 ± .01 1 PLACE ± 0.25 ± --- ANGULAR ± 1 ° | DIMENSION STYLE: IN/MM | TITLE: 1X4 SFP GANGED CAGE ASSY, W/0.062" OD GASKET SALES DRAWING | MATERIAL NO. 747280416 | |
| | | | DRAFT WHERE APPLICABLE MUST REMAIN WITHIN DIMENSIONS | DATE: 2007/02/27 | DATE: 2007/02/27 | DOCUMENT NO. SD-74728-416 |
| | DESCRIPTION | THIS DRAWING CONTAINS INFORMATION THAT IS PROPRIETARY TO MOLEX INCORPORATED AND SHOULD NOT BE USED WITHOUT WRITTEN PERMISSION | | MATERIAL NO. 747280416 | | |

20 | 19 | 18 | 17 | 16 | 15 | 14 | 13 | 12 | 11 | 74728 | 9 | 8 | 7 | 6 | 5 | 4 | 3 | 2 | 1

PCB LAYOUT FOR SINGLE SIDE MOUNTING



CROSS-HATCHED AREA DENOTES
COMPONENT AND TRACE KEEP-OUT
(EXCEPT CHASSIS GROUND)

SEE NOTE 3

SEE NOTE 3

SEE NOTE 3

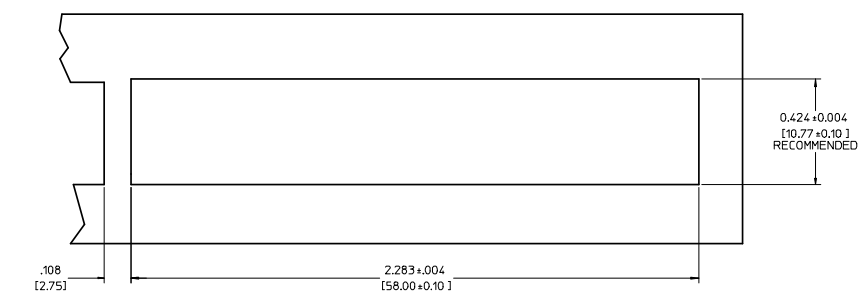
$\phi .041 \pm .002$
[1.05 ± 0.05] X31
[.004] [A] [B]

$\phi .037 \pm .002$
[0.95 ± 0.05] X16
[.004] [A] [B]
SMALLER HOLE ON
THESE FOUR ROWS ONLY

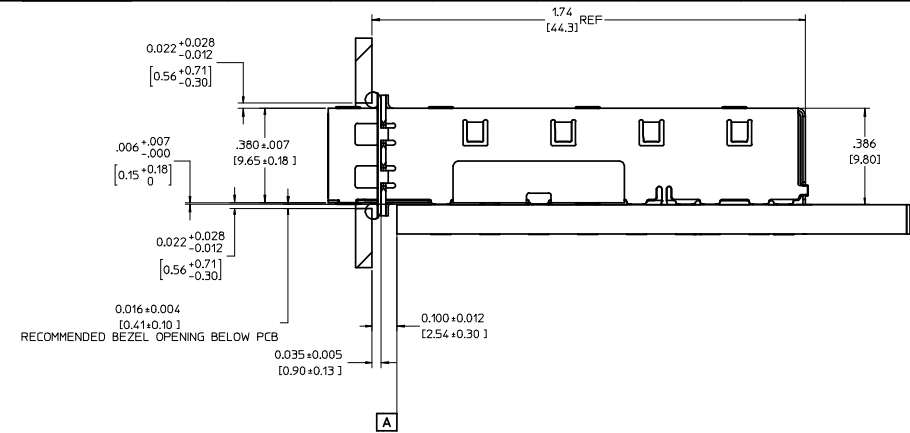
THIS AREA DENOTES
COMPONENT KEEP-OUT
(TRACES ALLOWED)

- NOTES:
1. PADS AND VIAS GO TO CHASSIS GROUND. (34 PLACES). RECOMMENDED PADS TO BE 2mm SQUARE
 2. PLATING OPTIONAL FOR THROUGH HOLES. (12 PLACES).
 3. RECOMMENDED PLATING INCLUDES HASL, IMMERSION (GOLD, SILVER, OR TIN), AND OSP.
 4. HOLE PATTERN REPEATS FOR EACH PORT, SPACING BETWEEN PORTS IS 5.61 [14.25]

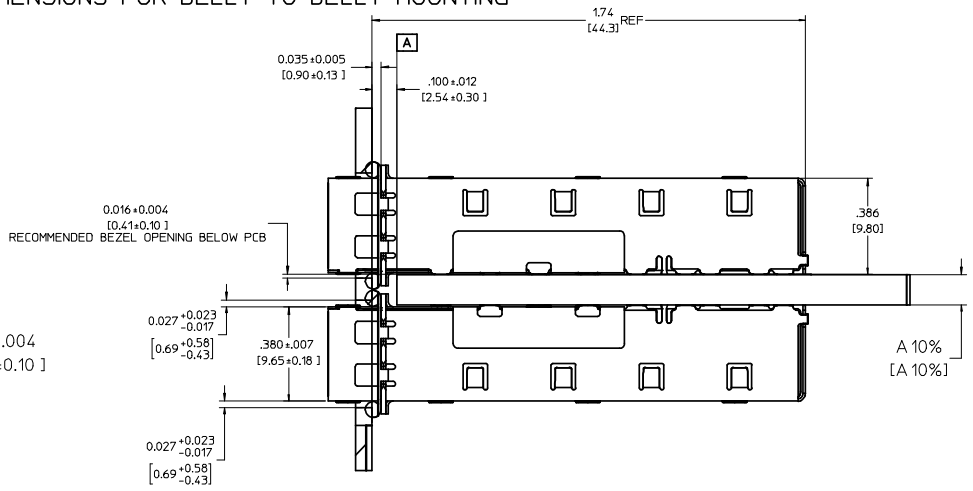
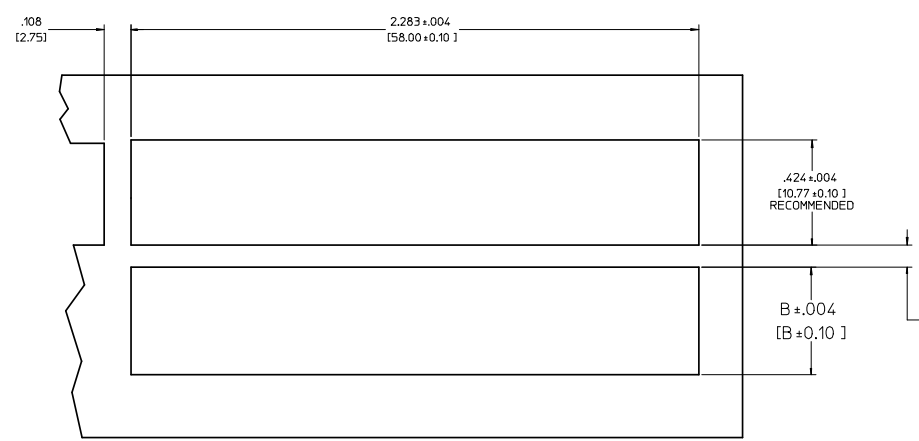
| | | | | | | | |
|---|---|--|---|---|------------------------|--------------------|--|
| REMOVED L TPIES ELC NO: 2007/02/27 DRAWN BY: CCOX CHKD: 2007/03/02 APPR: RMAHMOOD007/03/02 | QUALITY SYMBOLS | GENERAL TOLERANCES (UNLESS SPECIFIED) | SCALE 6:1 | DESIGN UNITS METRIC | THIRD ANGLE PROJECTION | REVISE ON CAD ONLY | |
| | DIMENSION STYLE IN/MM DRAWN BY: CCOX DATE: 2007/02/27 CHECKED BY: RMAHMOOD DATE: 2007/02/27 APPROVED BY: RMAHMOOD DATE: 2007/02/27 | DIMENSION STYLE IN/MM TITLE 1X4 SFP GANGED CAGE ASSY, w/0.062" OD GASKET SALES DRAWING | 4 PLACES ± --- ± --- 3 PLACES ± --- ± .005 2 PLACES ± 0.13 ± .01 1 PLACE ± 0.25 ± --- ANGULAR ± 1 ° | MATERIAL NO. 747280416 DOCUMENT NO. SD-74728-416 SHEET NO. 3 OF 5 | | | |
| | | | DRAFT WHERE APPLICABLE MUST REMAIN WITHIN DIMENSIONS | MOLEX INCORPORATED THIS DRAWING CONTAINS INFORMATION THAT IS PROPRIETARY TO MOLEX INCORPORATED AND SHOULD NOT BE USED WITHOUT WRITTEN PERMISSION | | | |
| | | | | | | | |



BEZEL AND BOARD POSITION DIMENSIONS FOR SINGLE SIDE MOUNTING



BEZEL AND BOARD POSITION DIMENSIONS FOR BELLY TO BELLY MOUNTING



NOTE: FOR A GIVEN BOARD THICKNESS (A), DIMENSIONS (B) AND (C) ARE DIRECTLY AFFECTED.

USE RECOMMENDED DIMENSIONS AND TOLERANCES TO AID IN DEVELOPING BEZEL OPENING.

FOR EXAMPLE USING A BOARD THICKNESS OF 0.125" THE RECOMMENDED VALUES WOULD BE:

- A= .125/3.18 ±10%
- B= .434/11.03 ±.004
- C= .088/2.23 ±.004

| | | | | | | | | | | |
|---|-----------------------------|-------------------------------|---------------------------------------|-----------------------|-----------------------|------------------------|------------------------|---------------------------------|--|--|
| REMOVED L TPIRES | EC NO: DRMN:CCOX 2007/02/27 | QUALITY SYMBOLS ▽=0 ▽=0 | GENERAL TOLERANCES (UNLESS SPECIFIED) | | SCALE 4:1 | DESIGN UNITS METRIC | THIRD ANGLE PROJECTION | REVISE ON CAD ONLY | | |
| | CHKD: RMAHMOOD007/03/02 | | APPR: RMAHMOOD007/03/02 | mm | INCH | DIMENSION STYLE IN/MM | | TITLE | | |
| | DESCRIPTION | | 4 PLACES ± --- ± --- | 3 PLACES ± --- ± .005 | 2 PLACES ± 0.13 ± .01 | 1 PLACE ± 0.25 ± --- | DRAWN BY CCOX | DATE 2007/02/27 | 1X4 SFP GANGED CAGE ASSY, W/0.062" OD GASKET SALES DRAWING | |
| | | | ANGULAR ± 1 ° | | CHECKED BY RMAHMOOD | | DATE 2007/02/27 | MATERIAL NO. MOLEX INCORPORATED | | |
| DRAFT WHERE APPLICABLE MUST REMAIN WITHIN DIMENSIONS | | | APPROVED BY RMAHMOOD | | DATE 2007/02/27 | DOCUMENT NO. 747280416 | | SHEET NO. 4 OF 5 | | |
| THIS DRAWING CONTAINS INFORMATION THAT IS PROPRIETARY TO MOLEX INCORPORATED AND SHOULD NOT BE USED WITHOUT WRITTEN PERMISSION | | | | | | | | | | |

| DATE | REV | CHANGES |
|------------|-----|--|
| 2007/02/07 | A | INITIAL RELEASE |
| 2007/02/27 | B | 1. Removed light pipes and light pipe covers from sht 1 & 4.; 2. Changed EMI gasket OD from 0.7478mm to 0.7874mm.; 3. Deleted note referencing Product Specification PS-74728-000 in 'Reference Documents' note. |
| | | |
| | | |
| | | |
| | | |
| | | |

| | | | | | | | | |
|--|---------------------------|-----------------|---------------------------------------|----------------------|----------------------|---|------------------------|--|
| REMOVED L PIPES | EC NO: 2007/02/27 | QUALITY SYMBOLS | GENERAL TOLERANCES (UNLESS SPECIFIED) | | SCALE 1:1 | DESIGN UNITS METRIC | THIRD ANGLE PROJECTION | REVISE ON CAD ONLY |
| | DRWN:CCOX | | 2007/03/02 | .mm | .INCH | DIMENSION STYLE IN/MM | | |
| | CHKD: 2007/03/02 | | DESCRIPTION | 4 PLACES ± --- ± --- | 3 PLACES ± --- ±.005 | DRAWN BY CCOX | DATE 2007/02/27 | TITLE 1X4 SFP GANGED CAGE ASSY, W/0.062" OD GASKET SALES DRAWING |
| | APPR: RMAHMOOD 2007/03/02 | | REV | 2 PLACES ± 0.13 ±.01 | 1 PLACE ± 0.25 ± --- | CHECKED BY RMAHMOOD | DATE 2007/02/27 | MATERIAL NO. 747280416 |
| DRAFT WHERE APPLICABLE MUST REMAIN WITHIN DIMENSIONS | | | ANGULAR ± 1 ° | APPROVED BY RMAHMOOD | DATE 2007/02/27 | THIS DRAWING CONTAINS INFORMATION THAT IS PROPRIETARY TO MOLEX INCORPORATED AND SHOULD NOT BE USED WITHOUT WRITTEN PERMISSION | | |