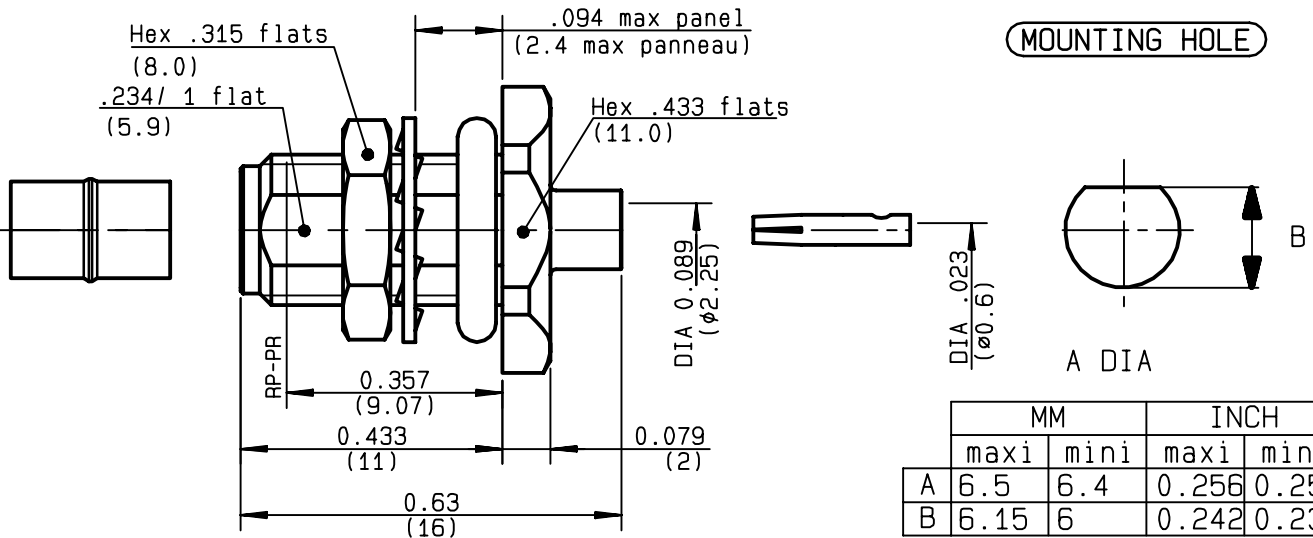


**STRAIGHT BULKHEAD JACK PANEL SEAL
SOLDER TYPE - CABLE .085**

R124.326.003
SERIES SMA-COM



| | |
|---------------------------------|---------------------------------------|
| NOMINAL IMPEDANCE | 50 Ω |
| FREQUENCY RANGE | 0-18 GHz |
| TEMPERATURE RATING | -65/+105 °C |
| V.S.W.R | 1.07 + .01 x F(GHz)Maxi |
| RF INSERTION LOSS | 0.05 √F(GHz) dB Maxi |
| VOLTAGE RATING | 335 Veff Maxi |
| DIELECTRIC WITHSTANDING VOLTAGE | 750 Veff Mini |
| INSULATION RESISTANCE | 5000 MΩMini |
| HERMETIC SEAL | NA Atm.cm ³ /s |
| LEAKAGE (pressurized only) | NA |
| MECHANICAL DURABILITY | 100 Cycles |
| WEIGHT | 3.45 gr |
| SPECIFICATION | |

| | |
|----------------------------|---------------------|
| CABLES : KS 1 | |
| RG 405 | |
| OTHERS CHARACTERISTICS | |
| CABLE RETENTION | 130 N Mini |
| CENTER CONTACT RETENTION | |
| Axial force - mating end | NA N Mini |
| Axial force - opposite end | NA N Mini |
| Torque | NA cm.N Mini |
| RECOMMENDED TORQUES | |
| Mating | NA cm.N |
| Panel nut | 150 cm.N |
| Clamp nut | NA cm.N |

| | | | |
|-----------------|------------------|--------------------------|---------------------------------------|
| CONNECTOR PARTS | MATERIALS | FINISH | (all values are given in micrometers) |
| BODY | BRASS | GOLD 0.2 OVER NICKEL 2 | |
| OUTER CONTACT | | | |
| CENTER CONTACT | BERYLLIUM COPPER | GOLD 1.3 OVER COPPER 2.5 | |
| INSULATOR | PTFE | - | |
| GASKET | SILICONE RUBBER | - | |
| OTHERS PIECES | BRASS | GOLD 0.2 OVER NICKEL 2 | |

| | | |
|----------------|-------------------|--------------------|
| ISSUE | CREATION DATE | FILE PART-NUMBER |
| 9847C00 | 03/01/1996 | 95-0105-117 |



FANJAT 0.

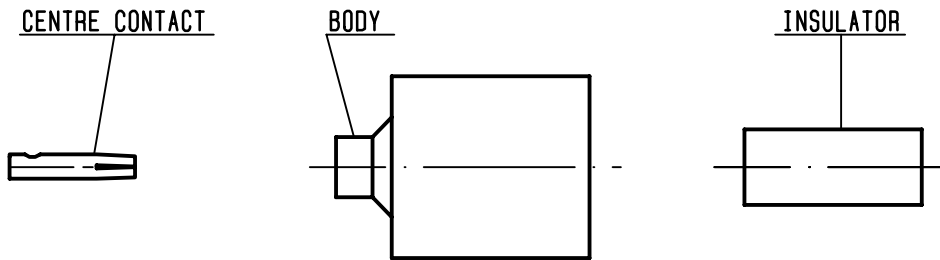
The information given here is subject to change without notice. Design changes may be in order to improve the product.

Connect to the future



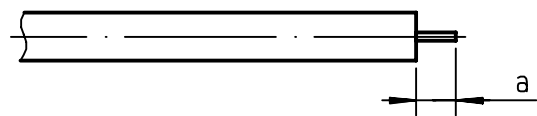
R124.326.003

ISSUE **9847C00** SERIES **SMA-COM**



①

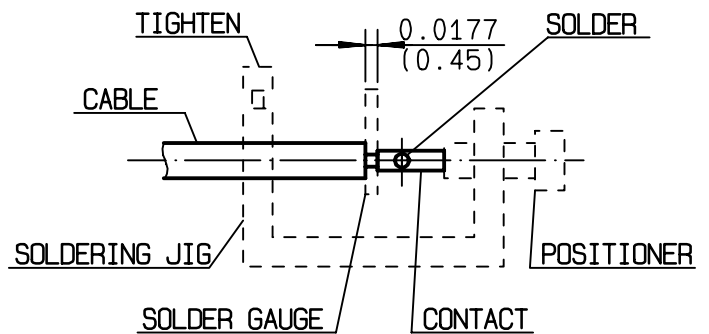
Take the tool kit : R282.120.000
Strip the dielectric of the cable .
Stripping tool cable : R282.051.000
Trimmer : R282.063.000
Clean the cable .
-



| Stripping | a | b | c | d | e |
|-----------|---------|---|---|---|---|
| inch | 0.125 0 | 0 | 0 | 0 | 0 |
| mm | 3.17 | | | | |

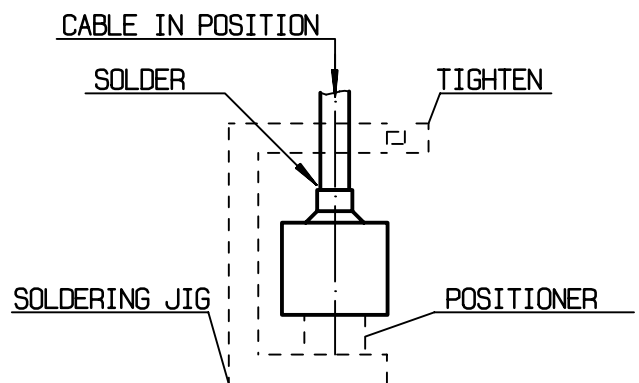
②

Screw the positioner R282.744.220 onto the soldering jig R282.740.000
Slide contact into positioner .
Insert solder gauge R282.862.060 between contact and cable .
Tighten and solder the contact .



③

After cooling remove cable assembly from the jig .
Screw positioner R282.744.010 into the connector .
Slide cable into the connector until it bottoms againsts positioner R282.744.010 .
Tighten .
Put 3 rings of solder around the cable and solder .



④

After cooling remove cable assembly from the jig .
Screw positioner cut R282.914.010
Cut the dielectric flush to clamp braid sleeve with tool R282.915.010.
Screw female dielectric insert tool onto connector and insert insulator with the dielectric plunger R282.730.043

