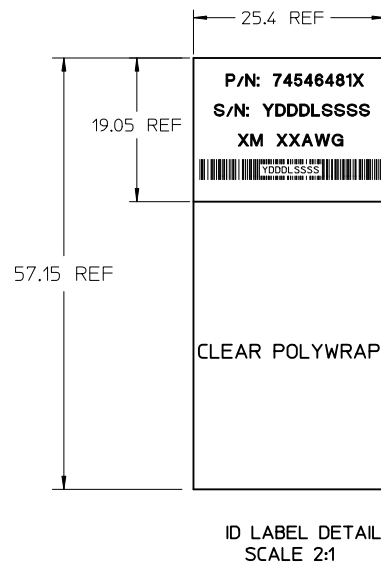


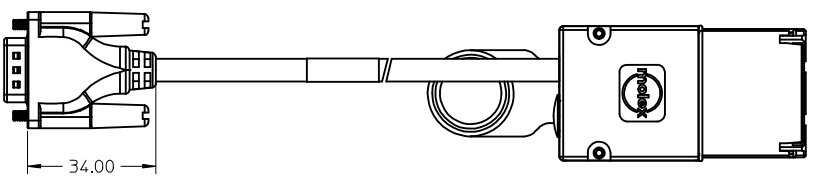
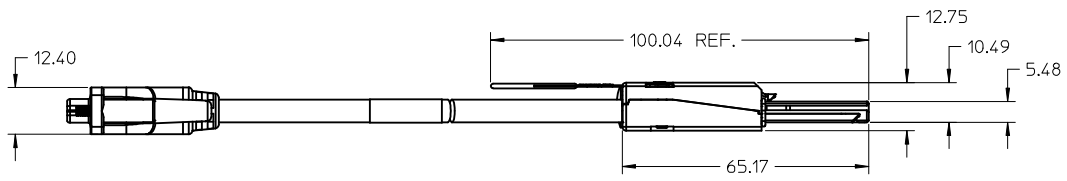
1X ID LABEL, 1 REQUIRED
TEXT RIGHT SIDE UP
SEE LABEL DETAIL

8X



LABEL TO CONTAIN THE FOLLOWING INFORMATION:
YDDLSSSS
Y = LAST DIGIT OF YEAR
DDD = DAY OF THE YEAR
L = LOCATION (1 = HPC, 2 = GUAD, 3 = DG)
SSSS = SERIAL NUMBER

ID LABEL DETAIL
SCALE 2:1



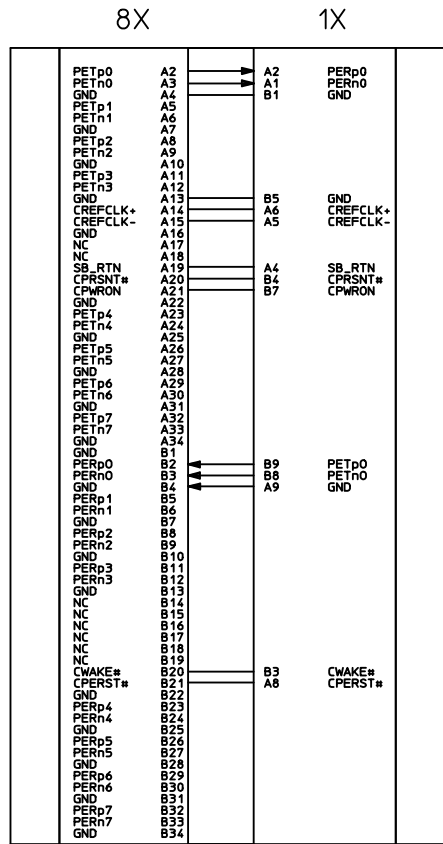
MOLEX P/N	LENGTH	AWG	TOLERANCE
745464810	0.5M	28	0.025M
745464811	1M	28	0.025M
745464812	2M	28	0.025M
745464813	3M	28	0.025M
745464814	4M	26	0.05M
745464815	5M	26	0.05M
745464816	6M	24	0.08M
745464817	7M	24	0.08M

- NOTES:
- MATERIAL= BACKSHELLS - ZINC DIECAST
PULL - DUPONT ZYTEL ST801 NYLON 6/6
 - LENGTH AND TOLERANCE - SEE TABLE
 - ELECTRICAL PERFORMANCE PER PCI EXPRESS EXTERNAL CABLING SPEC.
 - PLUG MATES TO RECEPTACLE 755860002, AND EMI GUIDE HOUSING ASSY. 745400100
 - LEAD FREE, NO ROHS EXEMPTIONS.
 - NOT COMPLIANT WITH INSERTION LOSS SPEC PER PCIe EXTERNAL CABLING SPECIFICATION.

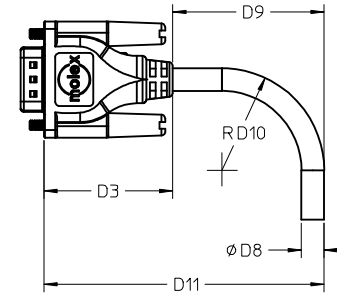
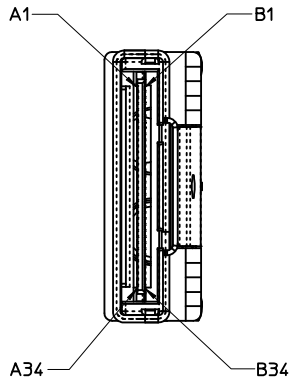
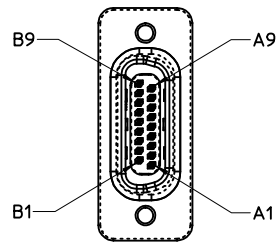
BAR CODE ON LABEL EC NO: CPG2015-3293 DRWIN:CHIRSCHY 2014/08/14 CHKD:JMARTINEZ 2014/12/18 APPR:CHIRSCHY 2014/12/18	QUALITY SYMBOLS 	GENERAL TOLERANCES (UNLESS SPECIFIED)		DIMENSION STYLE MM ONLY		SCALE 1:1	DESIGN UNITS METRIC	THIRD ANGLE PROJECTION	
		mm INCH	DRAWN BY JERWIN	DATE 2008/01/28	TITLE 8X TO 1X PCIe IPASS CABLE ASSEMBLY		MATERIAL NO. SEE CHART	DOCUMENT NO. SD-74546-481	SHEET NO. 1 OF 2
DRAFT WHERE APPLICABLE MUST REMAIN WITHIN DIMENSIONS		ANGULAR ±1/2°		THIS DRAWING CONTAINS INFORMATION THAT IS PROPRIETARY TO MOLEX. INCORPORATED AND SHOULD NOT BE USED WITHOUT WRITTEN PERMISSION					

IPASS™ IS A TRADEMARK OF MOLEX





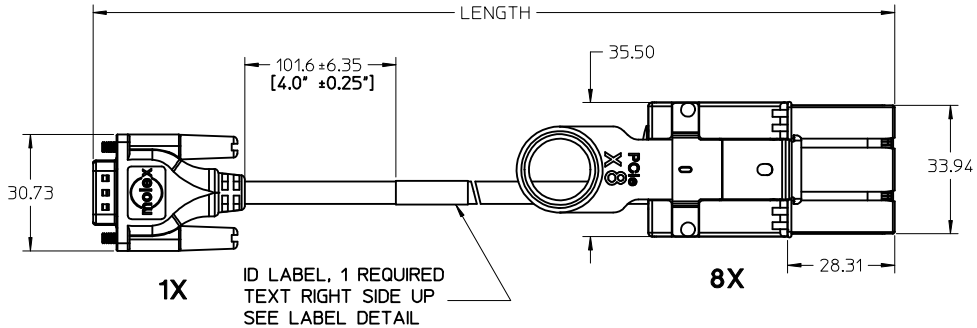
A3, A7, B2, B6 NO CONNECT.
FOR 1X SIDE



AWG	24	28	TOLERANCE
D3	34.00	34.00	REF
D8	6.5	5.80	REF
D9	35.6	32.45	MIN
D10	29.25	26.10	MIN
D11	75.95	72.80	MIN

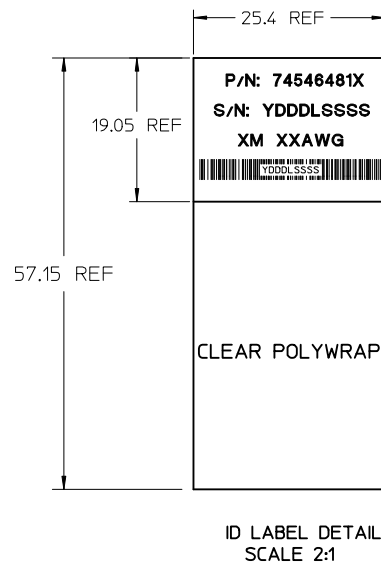
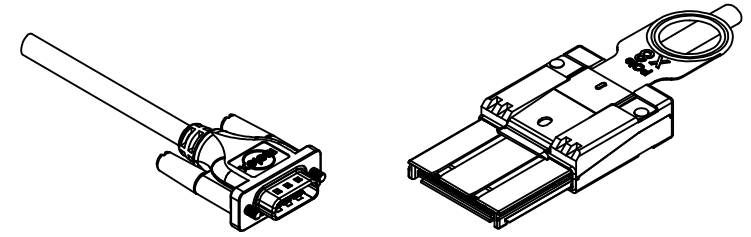
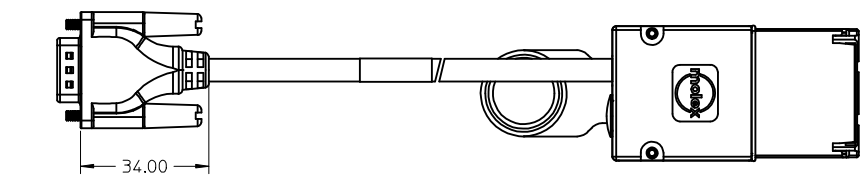
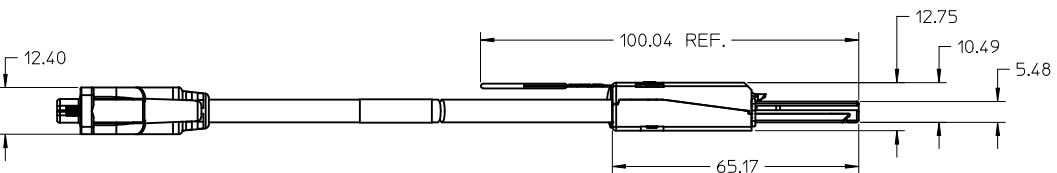
IPASS™ IS A TRADEMARK OF MOLEX

BAR CODE ON LABEL EC NO: CFG2015-3293 DRWIN:CHRSCHY 2014/08/14 CHKD:JMARTINEZ 2014/12/18 APPR:CHRSCHY 2014/12/18	QUALITY SYMBOLS 	GENERAL TOLERANCES (UNLESS SPECIFIED)		DIMENSION STYLE MM ONLY	SCALE 1:1	DESIGN UNITS METRIC	THIRD ANGLE PROJECTION
		4 PLACES ± --- ± --- 3 PLACES ± --- ± --- 2 PLACES ± 0.13 ± --- 1 PLACE ± 0.25 ± --- 0 PLACE ± --- ± ---	mmm INCH	DRAWN BY DATE JERWIN 2008/01/28	TITLE 8X TO 1X PCIE IPASS CABLE ASSEMBLY		
		DRAFT WHERE APPLICABLE MUST REMAIN WITHIN DIMENSIONS		APPROVED BY DATE DDOYE 2008/01/28	molex		
		ANGULAR ±1/2°		MATERIAL NO. SEE CHART	DOCUMENT NO. SD-74546-481		
SHEET NO. 2 OF 2		THIS DRAWING CONTAINS INFORMATION THAT IS PROPRIETARY TO MOLEX INCORPORATED AND SHOULD NOT BE USED WITHOUT WRITTEN PERMISSION					



1X ID LABEL, 1 REQUIRED TEXT RIGHT SIDE UP SEE LABEL DETAIL

8X



ID LABEL DETAIL SCALE 2:1

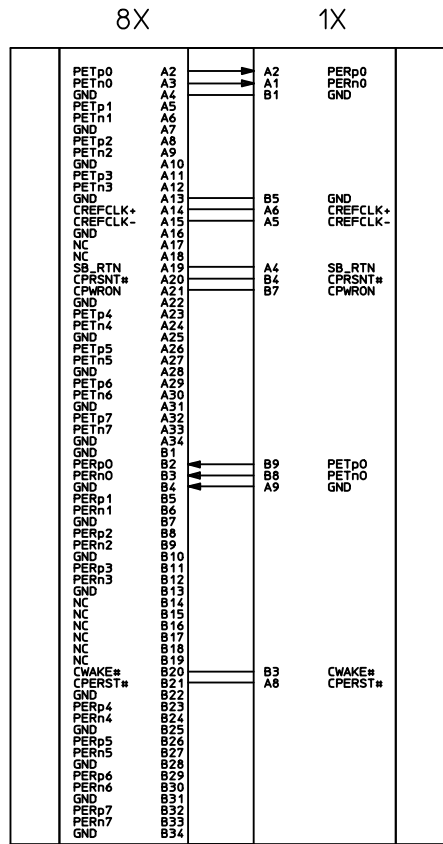
LABEL TO CONTAIN THE FOLLOWING INFORMATION:
 YDDLSSSS
 Y = LAST DIGIT OF YEAR
 DDD = DAY OF THE YEAR
 L = LOCATION (1 = HPC, 2 = GUAD, 3 = DG)
 SSSS = SERIAL NUMBER

MOLEX P/N	LENGTH	AWG	TOLERANCE
745464810	0.5M	28	0.025M
745464811	1M	28	0.025M
745464812	2M	28	0.025M
745464813	3M	28	0.025M
745464814	4M	26	0.05M
745464815	5M	26	0.05M
745464816	6M	24	0.08M
745464817	7M	24	0.08M

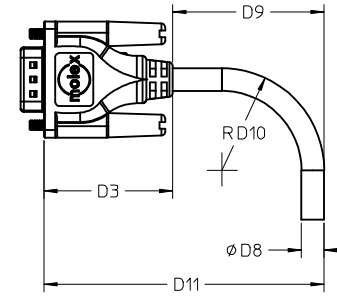
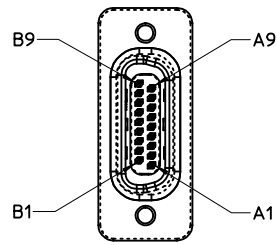
- NOTES:
- MATERIAL= BACKSHELLS - ZINC DIECAST
PULL - DUPONT ZYTEL ST801 NYLON 6/6
 - LENGTH AND TOLERANCE - SEE TABLE
 - ELECTRICAL PERFORMANCE PER PCI EXPRESS EXTERNAL CABLING SPEC.
 - PLUG MATES TO RECEPTACLE 755860002, AND EMI GUIDE HOUSING ASSY. 745400100
 - LEAD FREE, NO ROHS EXEMPTIONS.
 - NOT COMPLIANT WITH INSERTION LOSS SPEC PER PCIe EXTERNAL CABLING SPECIFICATION.

BAR CODE ON LABEL EC NO: CPG2015-3293 DRWIN:CHRSCHY 2014/08/14 CHKD:JMARTINEZ 2014/12/18 APPR:CHRSCHY 2014/12/18	QUALITY SYMBOLS 	GENERAL TOLERANCES (UNLESS SPECIFIED)		DIMENSION STYLE MM ONLY		SCALE 1:1	DESIGN UNITS METRIC	THIRD ANGLE PROJECTION	
		4 PLACES ± --- ± --- 3 PLACES ± --- ± --- 2 PLACES ± 0.13 ± --- 1 PLACE ± 0.25 ± --- 0 PLACE ± --- ± ---	mm INCH DRAWN BY DATE JERWIN 2008/01/28 CHECKED BY DATE BSCHOESTER 2008/01/28 APPROVED BY DATE DDOYE 2008/01/28	TITLE 8X TO 1X PCIe IPASS CABLE ASSEMBLY				DOCUMENT NO. SD-74546-481	
DRAFT WHERE APPLICABLE MUST REMAIN WITHIN DIMENSIONS		ANGULAR ±1/2°		MATERIAL NO. SEE CHART		THIS DRAWING CONTAINS INFORMATION THAT IS PROPRIETARY TO MOLEX INCORPORATED AND SHOULD NOT BE USED WITHOUT WRITTEN PERMISSION			

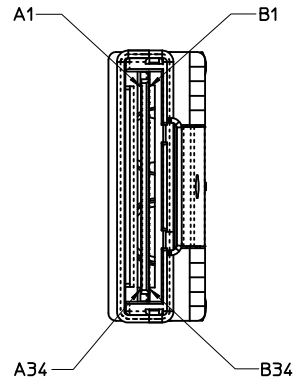
IPASS™ IS A TRADEMARK OF MOLEX



A3, A7, B2, B6 NO CONNECT.
FOR 1X SIDE



AWG	24	28	TOLERANCE
D3	34.00	34.00	REF
D8	6.5	5.80	REF
D9	35.6	32.45	MIN
D10	29.25	26.10	MIN
D11	75.95	72.80	MIN



IPASS™ IS A TRADEMARK OF MOLEX

BAR CODE ON LABEL EC NO: CFG2015-3293 DRWIN:CHRSCHY 2014/08/14 CHKD:JMARTINEZ 2014/12/18 APPR:CHRSCHY 2014/12/18	QUALITY SYMBOLS 	GENERAL TOLERANCES (UNLESS SPECIFIED)		DIMENSION STYLE MM ONLY	SCALE 1:1	DESIGN UNITS METRIC	THIRD ANGLE PROJECTION	
		4 PLACES ± --- ± --- 3 PLACES ± --- ± --- 2 PLACES ± 0.13 ± --- 1 PLACE ± 0.25 ± --- 0 PLACE ± --- ± ---		DRAWN BY DATE JERWIN 2008/01/28		TITLE 8X TO 1X PCIE IPASS CABLE ASSEMBLY		
		ANGULAR ±1/2°		CHECKED BY DATE BSCHOESTER 2008/01/28				
		DRAFT WHERE APPLICABLE MUST REMAIN WITHIN DIMENSIONS		APPROVED BY DATE DDOYE 2008/01/28				