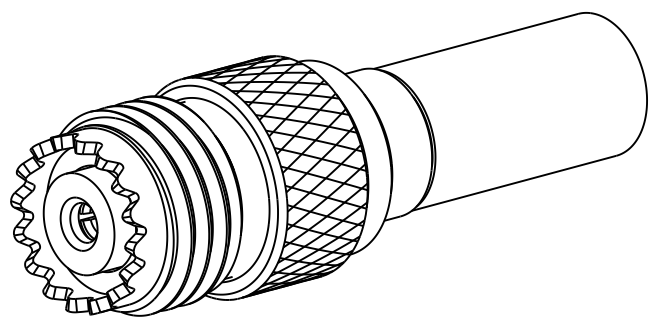
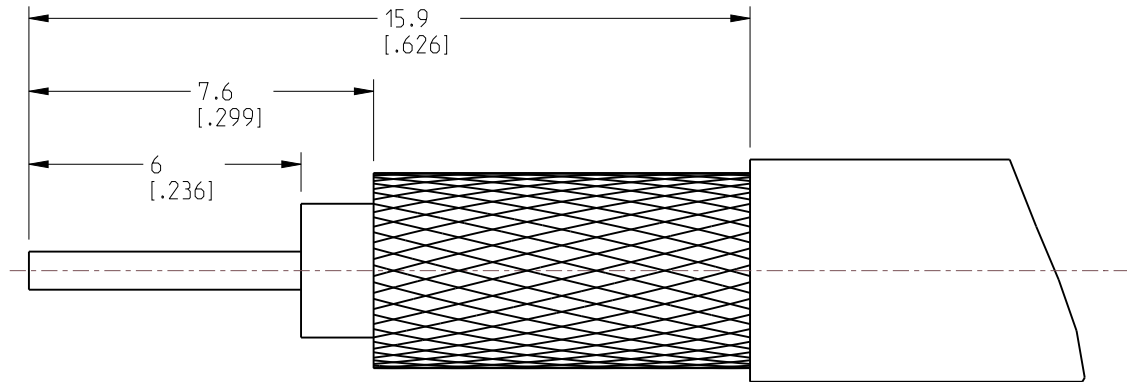


NOTES:

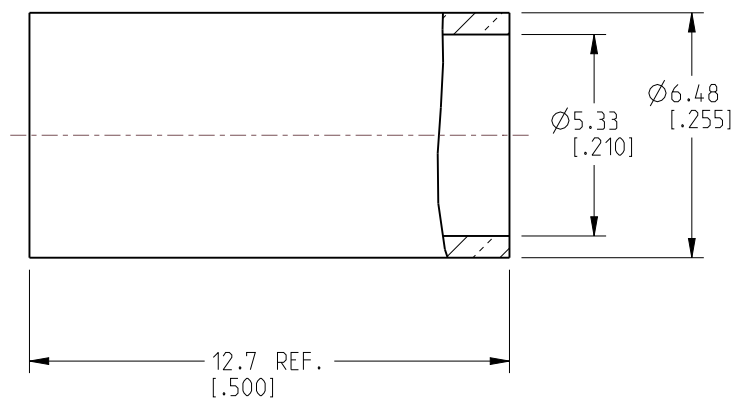
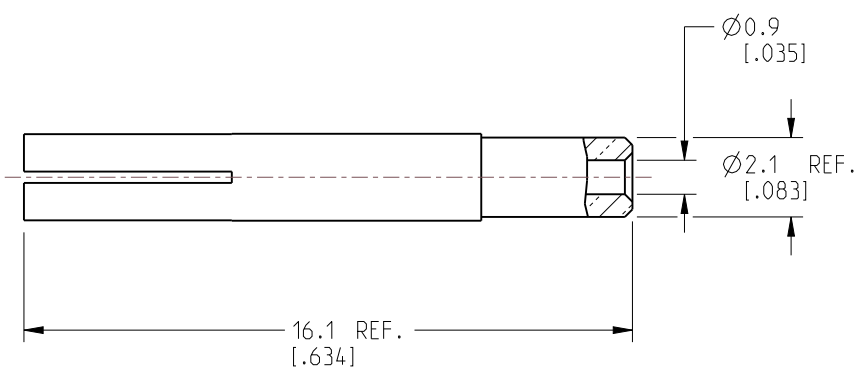
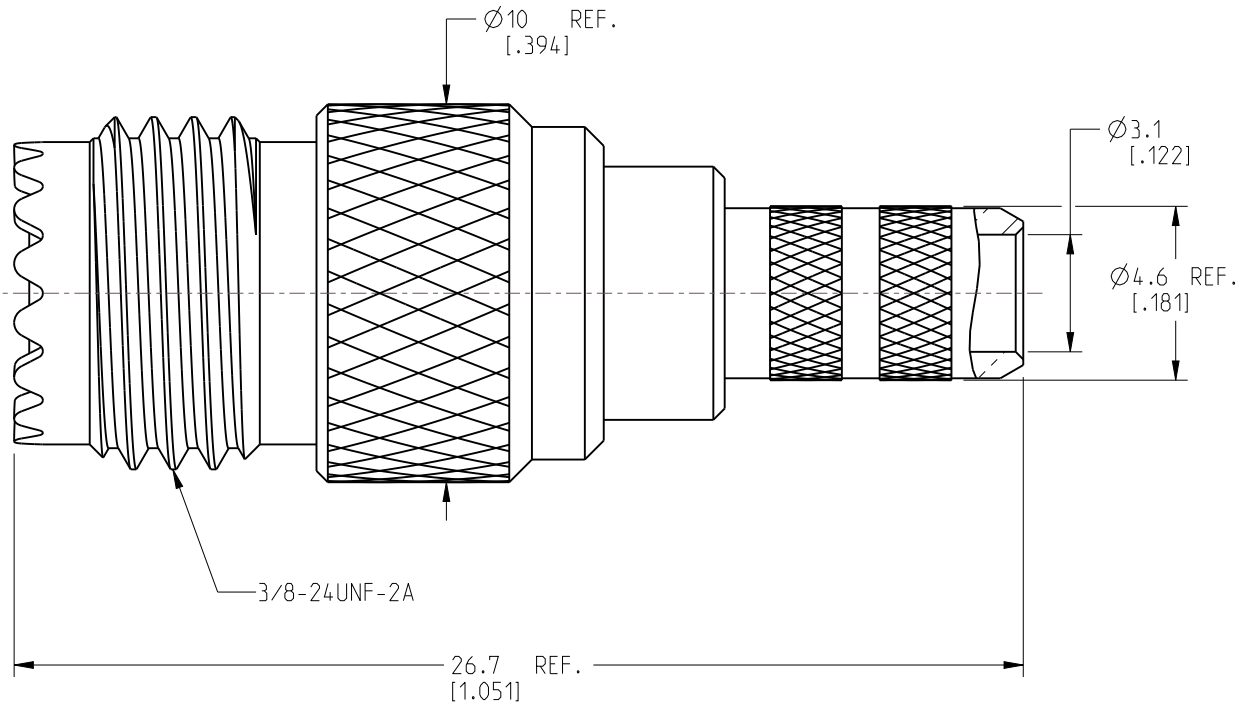
1. MATERIALS AND FINISHES:
 BODY - BRASS, NICKEL PLATING
 CONTACT - PHOSPHOR BRONZE, GOLD PLATING
 INSULATOR - TEFLON, NATURAL
 FERRULE - COPPER, NICKEL
2. ELECTRICAL:
 A. IMPEDANCE: 50 OHM
 B. FREQUENCY RANGE: DC-2.5 GHz
 C. DIELECTRIC WITHSTANDING VOLTAGE: 1000 VRMS, MIN.
3. MECHANICAL:
 A. DURABILITY: 500 CYCLES MIN.
 B. TEMPERATURE RANGE: -55°C TO +85°C
4. CRIMPED FERRULE HEX. CRIMP SIZE .213"
5. CRIMPED CONTACT PIN HEX. CRIMP SIZE .068"



REVISIONS				
REV	DESCRIPTION	DATE	ECN	BY
NC	INITIAL RELEASE	--	----	--
A	MODIFY BODY AND CONTACT PIN	01/17/00	----	GRS
B	UPDATE DRAWING FORMAT	07/31/07	----	GRS
C	SYNC, REDRAWN IN THE CRO/E	16-Nov-22	16480	SH



RECOMMENDED
CABLE STRIPPING DIM'S



CUSTOMER OUTLINE DRAWING
ALL OTHER SHEETS ARE FOR INTERNAL USE ONLY

NOTICE: These drawings, specifications, or other data (1) are, and remain the property of Amphenol corp. (2) must be returned upon request; and (3) are confidential and not to be disclosed to any person other than those to whom they are given by Amphenol Corp. The furnishing of these drawings, specifications, or other data by Amphenol Corp., or to any other person to anyone for any purpose is not to be regarded by implication or otherwise in any manner licensing, granting rights to permitting such holder or any other person to manufacture, use or sell any product, process or design, patented or otherwise, that may in any way be related to or disclosed by said drawings, specifications, or other data.

UNLESS OTHERWISE SPECIFIED
DIMENSIONS ARE METRIC (INCHES) AND TOLERANCES ARE:
 <0.5mm = ±0.05mm [± 0.002]
 0.5 - 6mm = ±0.1mm [$\pm 0.020 - 0.236 = \pm 0.004$]
 >6.00 - 30mm = ±0.2mm [$\pm 0.236 - 1.181 = \pm 0.008$]
 >30.00 - 120mm = ±0.3mm [$\pm 1.181 - 4.725 = \pm 0.012$]

MATERIAL: SEE NOTES
 ENGR.1 SHANE ENGR.2 M.ZHANG DATE 14-NOV-22

TITLE: MINI-UHF CRIMP JACK (FOR RG-58/U CABLE)
 SHEET NO. 2 OF 2 SCALE: 5.0:1.0

Amphenol RF		SIZE	DRAWING NO. MU6121A1-NT3G-58U-50	REV
			ITEM NO. 196121AAF58NA5F	
			PART NO. 182112	



REFERENCE EAR#

ANGLES = ±1°