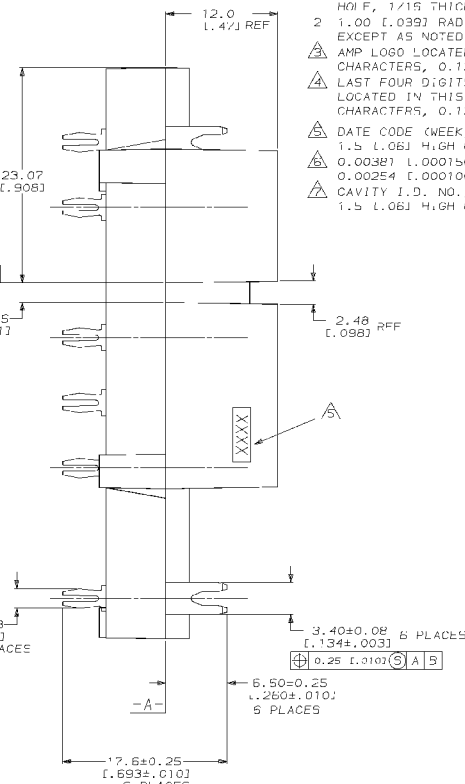
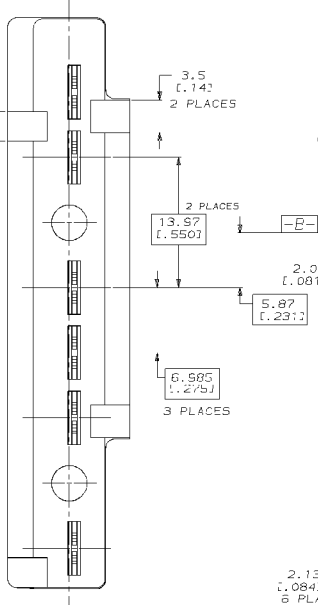
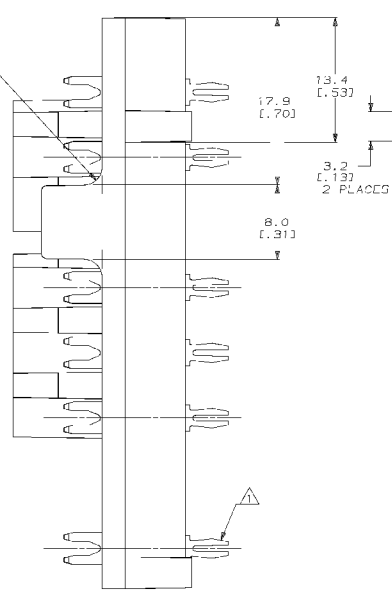
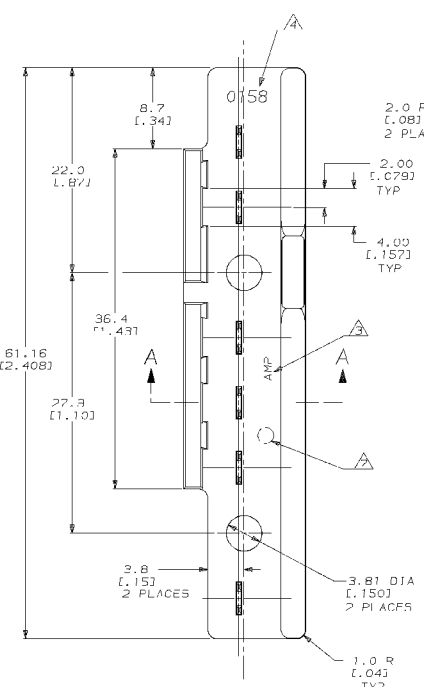
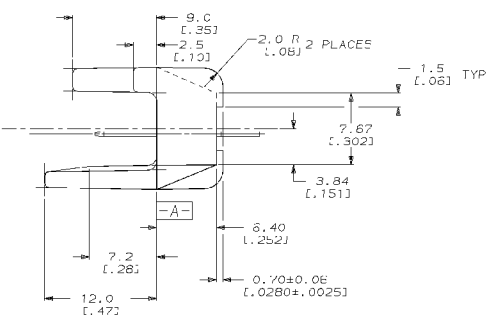
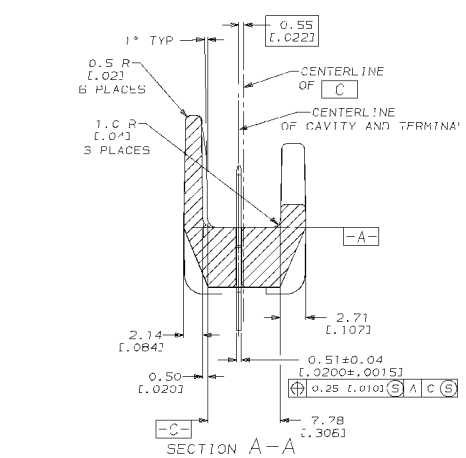


REV. NO.		DATE		DESCRIPTION		DATE	APP'D
AF	50			REV PER C710-0500-95			

- ▲ POSTS TO FIT INTO 1.28-1.52 (.070-.076) Dia HOI F, 1/16 THICK P.C. BOARD.
- 2 1.00 (.039) RADII, 1° DRAFT PERMISSIBLE EXCEPT AS NOTED.
- ▲ AMP LOGO LOCATED IN THIS AREA, 1.5 (.06) HIGH CHARACTERS, 0.13 (.005) RECESSED.
- ▲ LAST FOUR DIGITS OF A.C. SPARK NUMBER, LOCATED IN THIS AREA, 2.0 (.08) HIGH CHARACTERS, 0.15 (.005) RECESSED.
- ▲ DATE CODE (WEEK, YEAR) LOCATED IN THIS AREA.
- 1.5 (.06) HIGH CHARACTERS, 0.13 (.005) RECESSED.
- ▲ 0.0038 (.000150) MIN IN PER MIL-1-10/27 OVER 0.00254 (.000100) MIN COPPER PER MIL-C-14550.
- ▲ CAVITY I.D. NO., LOCATED IN THIS AREA.
- 1.5 (.06) HIGH CHARACTERS, 0.13 (.005) RECESSED.



METRIC



▲	H06 BRASS	TERMINAL ②	521006 1
BLACK	POLYESTER 30X GLASS FILLED 25% MAX REGRIND PERMISSIBLE	HOUSING ①	
FINISH	MATERIAL	COMPONENT, ITEM NO	PART NO
DR 4/14/92 NORMAN E. FEHER		AMP AMP Incorporated Northburg, PA 17105-3006	
CHK 4/16/92 JEFF R. SMITH		NAME ASSEMBLY, TAB, POKE-IN, MAG-MATE™	
APPD 4/16/92 PART NUMBER		DRAWING NO 521006	
APPD 4/16/92 NELSON E. NEFF		SHEET 1 OF 1	
SEE TABLE	APPLICATION SPEC	SCALE 4:1	
SEE TABLE	WEIGHT		

CUSTOMER DRAWING