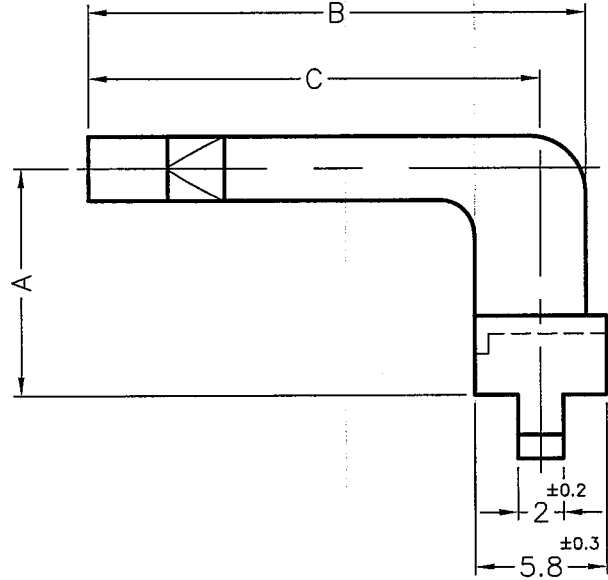
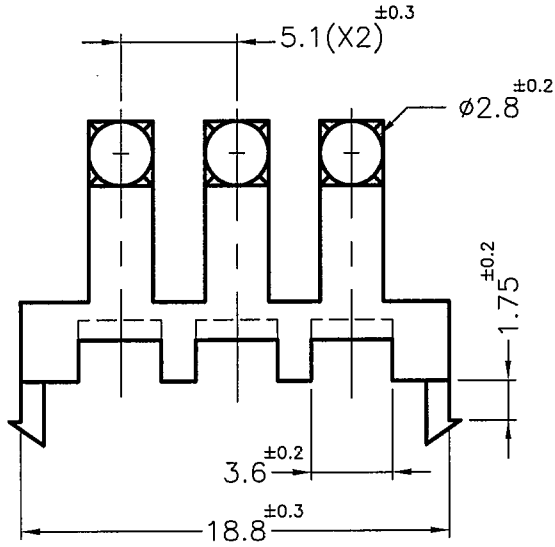
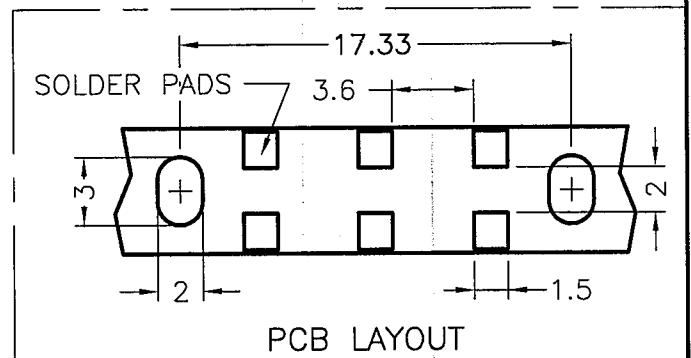


| DIM. | TOL. |
|----------|------|
| 5mm DOWN | ±0.2 |
| 5~20mm | ±0.3 |
| 20~40mm | ±0.4 |
| 40~60mm | ±0.5 |
| 60~100mm | ±0.8 |
| 100mm UP | ±1.0 |



| PART NO. | A | B | C |
|------------|----|----|----|
| LPE3-5-14 | 5 | 14 | 12 |
| LPE3-5-16 | 5 | 16 | 14 |
| LPE3-5-19 | 5 | 19 | 17 |
| LPE3-5-22 | 5 | 22 | 20 |
| LPE3-10-16 | 10 | 16 | 14 |
| LPE3-10-19 | 10 | 19 | 17 |
| LPE3-10-22 | 10 | 22 | 20 |
| LPE3-15-16 | 15 | 16 | 14 |
| LPE3-15-19 | 15 | 19 | 17 |
| LPE3-15-22 | 15 | 22 | 20 |

NOTE: 1. SHRINKING IS NORMAL STATUS.
 內縮為正常現象。
 2. MADE OF EQUIVALENT MATERIAL.
 均可使用同等材質。



康揚企業股份有限公司
 KANG YANG HARDWARE ENTERPRISE CO., LTD.
 康揚塑膠(東莞)有限公司
 KANG YANG PLASTIC(DONG GUAN)CO.,LTD.
 康哲電腦配件(吳江)有限公司
 KANG CHE COMPUTER COMPONENTS(WUJIANG)CO.,LTD.

| | | | | | | | | | |
|---|----------|------------|---------------------------------------|-------------|-------------|------------|-----------|--------------|---|
| PROPRIETARY AND CONFIDENTIAL THE INFORMATION CONTAINED IN THIS DRAWING IS THE SOLE PROPERTY OF KANG YANG HARDWARE ENTERPRISE CO. ANY REPRODUCTION IN PART OR AS A WHOLE WITHOUT THE WRITTEN PERMISSION OF KANG YANG HARDWARE ENTERPRISE CO. IS PROHIBITED. DO NOT SCALE DRAWING | DATE | 2003.06.05 | TITLE | LIGHT PIPE | DWG. NO. | LPE3-XX-XX | PART NO. | SEE ABOVE | |
| | DRAWN | SCOTT | MATERIAL | PC UL94V-2 | SIZE | A4 | SPEC. DWG | REV | B |
| | CHECKED | 林祺翔 | COLOR | TRANSPARENT | FINISH | | | | |
| | APPROVED | Kang | UNLESS OTHERWISE SPECIFIED TOLERANCE: | SEE ABOVE | SCALE: NONE | UNIT | mm | SHEET 1 OF 1 | |