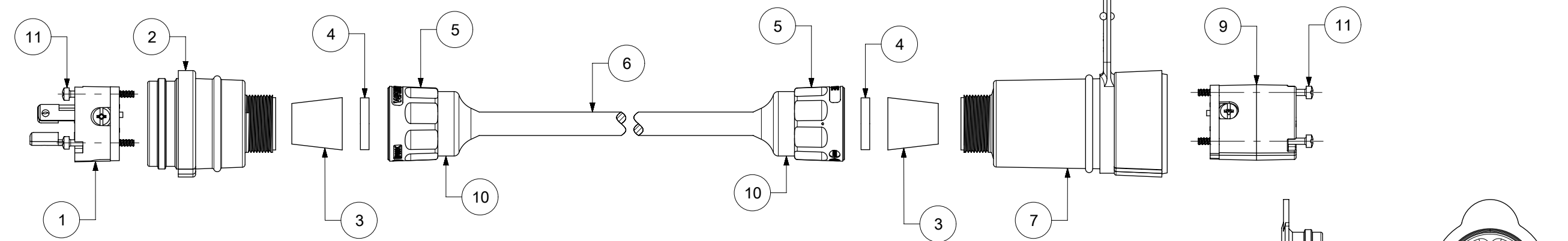
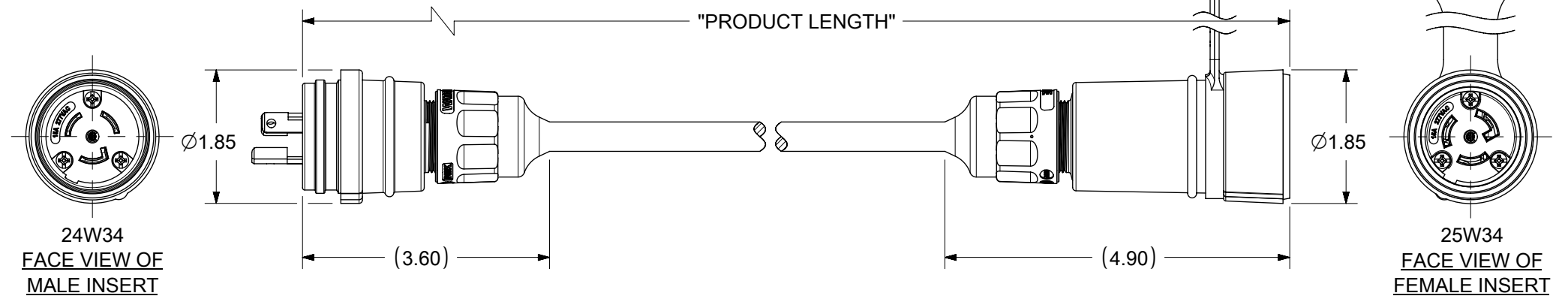


MATERIAL NO.	ENGINEERING NO.	DESCRIPTION	PRODUCT LENGTH
1301430185	24W34B163	24W34 W/50FT 16-3SO 25W34	50 FT +24.0/-0.0 IN
1301430186	24W34D143	24W34 W/100FT 14-3SO 25W34	100 FT +24.0/-0.0 IN
1301430017	24W34A163	24W34 W/25FT 16-3SO 25W34	25 FT +12.0/-0.0 IN

NEMA L7-15; 15A 277V; 2-POLE/3-WIRE



ITEM NO.	DESCRIPTION	MATERIAL	QTY.
1	MALE INSERT ASSY.	NYLON, POLYCARBONATE, BRASS PLATING - NICKEL OR ZINC	1
2	WATERTITE - MALE HUSK	SILICONE	1
3	GROMMET	RUBBER	2
4	FRICITION RING	NYLON	2
5	COMPRESSION NUT YELLOW	NYLON	2
6	YELLOW SOOW CORD	COPPER WIRE	1
7	WATERTITE - FEMALE HUSK	SILICONE	1
8	CLOSURE CAP YELLOW	SILICONE	1
9	FEMALE INSERT ASSY.	NYLON, POLYCARBONATE, BRASS PLATING - NICKEL OR ZINC	1
10	CABLE GLOVE	SILICONE	2
11	RETAINING SCREW	STAINLESS STEEL	6



SYMBOLS		THIS DRAWING CONTAINS INFORMATION THAT IS PROPRIETARY TO MOLEX ELECTRONIC TECHNOLOGIES, LLC AND SHOULD NOT BE USED WITHOUT WRITTEN PERMISSION	
▽ = 0	INCH	SCALE	NTS
▽ = 0	GENERAL TOLERANCES (UNLESS SPECIFIED)		CURRENT REV DESC: NEW SALE DRAWING CREATED.
▽ = 0	ANGULAR TOL	±	°
▽ = 0	4 PLACES	±	
▽ = 0	3 PLACES	±	
▽ = 0	2 PLACES	±	
▽ = 0	1 PLACE	±	
▽ = 0	0 PLACES	±	
▽ = 0	DRAFT WHERE APPLICABLE MUST REMAIN WITHIN DIMENSIONS		THIRD ANGLE PROJECTION
EC NO: 620468		DRWN: PPURSUTANDEL	2019/07/08
DRWN: PPURSUTANDEL		CHK'D: DNGUYEN62	2019/08/07
APPR: HKNEELAND		2020/05/19	
INITIAL REVISION:		PRODUCT CUSTOMER DRAWING	
DRWN: PPURSUTANDEL		2019/07/08	DOCUMENT NUMBER
APPR: HKNEELAND		2020/05/19	1301430185
MATERIAL NUMBER		CUSTOMER	DOC TYPE DOC PART REVISION
SEE TABLE		GENERAL MARKET	PSD 000 A
B-SIZE		SERIES	SHEET NUMBER
130143			1 OF 1